

WA
353.1
St2 pa
1995
ed 10
c2

WASHINGTON STATE

VOTERS PAMPHLET

STATE GENERAL ELECTION

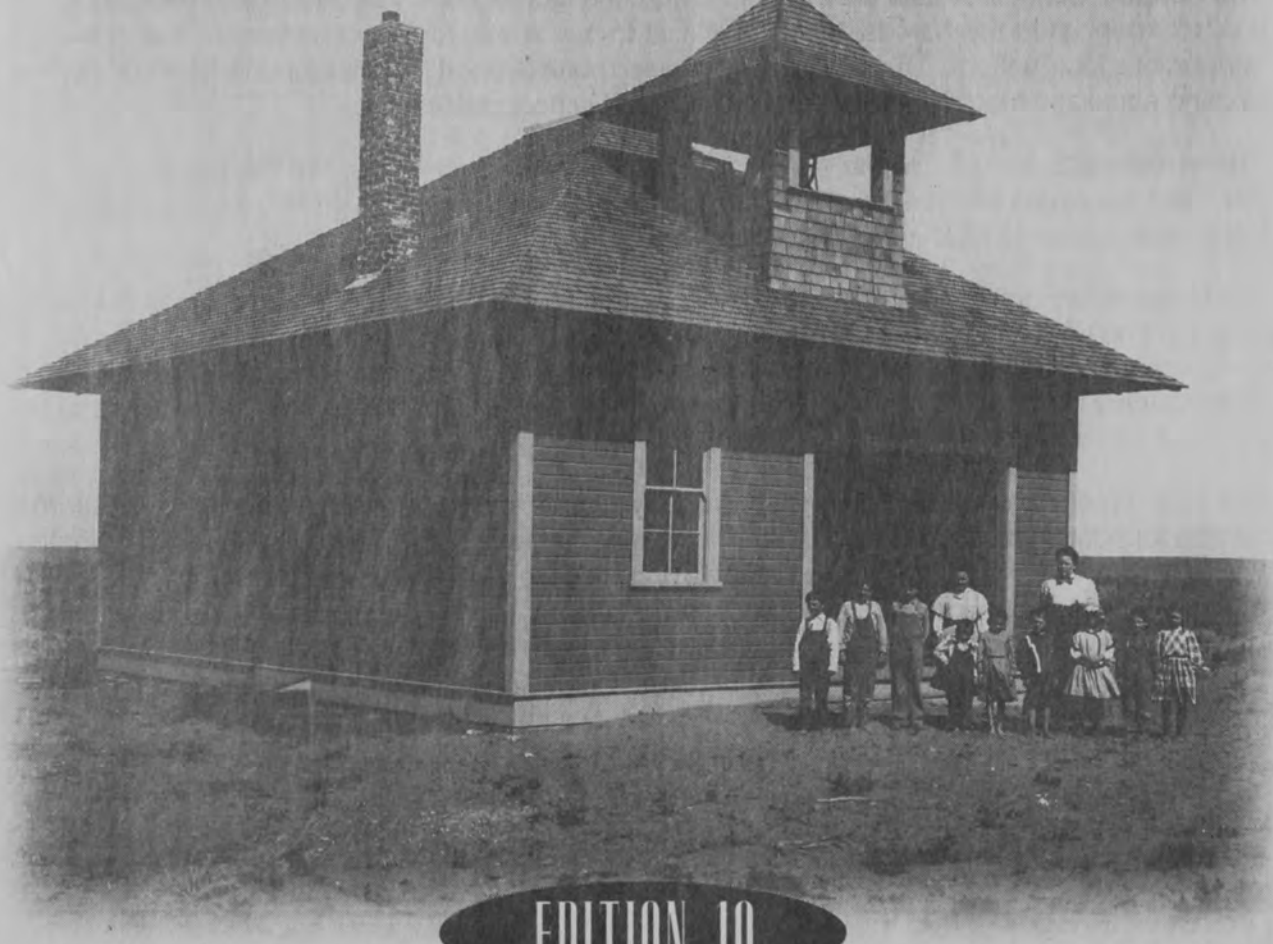


NOVEMBER 7, 1995

RECEIVED

JUL - - 1997

WA STATE LIBRARY



EDITION 10

PUBLISHED BY THE OFFICE OF THE SECRETARY OF STATE
AND THE SNOHOMISH COUNTY AUDITOR

INTRODUCTION TO THE 1995 VOTERS PAMPHLET

CELEBRATING THE CENTENNIAL OF THE "BAREFOOT SCHOOLBOY LAW"

"It is the paramount duty of the State to make ample provision for the education of all children residing within its borders, without distinction or preference on account of race, color, caste or sex."

— Article IX, Section 1
Washington State Constitution

The framers of the Washington State Constitution crafted a remarkable document during the summer of 1889, a document which to this day contains a number of extraordinary rights and protections for the citizens of our state.

Among the foremost of these provisions is the 34-word section listed above. Penning the strongest language of any state constitution, the authors made it abundantly clear that the state's preeminent responsibility was to provide for the education of its young people.

The ideal set forth in the state constitution was made practical in fairly short order when the Washington State Legislature approved the landmark "Barefoot Schoolboy Law" in 1895. It is the 100th anniversary of the passage of this law that we honor with the 1995 Washington State Voters Pamphlet.

The Barefoot Schoolboy Law drew its name from the fact that many families, particularly those in sparsely populated rural areas, found it difficult to buy shoes for their children let alone pay for support of a local school. The historic law provided state support for local schools through a direct tax and equalized funding between urban and rural school districts.

The investment paid off. In the early 1900s, the state of Washington led the nation in school spending per capita and ranked among the top three states in literacy with only one percent of the population unable to read and write.

The Barefoot Schoolboy Law was sponsored by State Representative John R. Rogers of Puyallup, who went on to be Governor from 1897 to his death in 1901. Schoolchildren from throughout the state later donated pennies to build a statue of Rogers, which stands in a park adjacent to the Old State Capitol Building in Olympia. Rogers is one of only two Washington state governors to be honored with a statue erected in their memory.

The 1995 Washington State Voters Pamphlet pays tribute to Rogers and the other visionaries who laid the foundation for support of education a century ago, and to the thousands of men and women who have worked over the years and are working today to meet the challenge of providing for the education of all our children.



RALPH MUNRO
Secretary of State

Cover: The Burbank School in Walla Walla County, shown here in 1909, and other rural Washington schools were ensured state support by the "Barefoot Schoolboy Law" of 1895. Photograph provided by the Washington State Historical Society.



A60003 577791

TABLE OF CONTENTS

Introduction	2	Cities & Towns	35
Voter's Checklist	3	School Districts	38
Initiative Measure 640	4	Fire Districts	47
Initiative Measure 651	6	Water Districts	52
Referendum Measure 48	8	Sewer District	54
Referendum Bill 45	10	Park & Recreation District	55
Substitute Senate Joint Resolution 8210	12	Charter Review Districts	56
Text of State Measures	15	Major Political Party & Caucus Information	67
Washington Presidential Primary Information	29	Independent & Minor Party Information	68
Public Disclosure & Federal Tax Information	29	Voting in the State of Washington	69
Supreme Court	30	Voting by Absentee Ballot	70
Snohomish County	31	Absentee Ballot Applications	71

VOTER'S CHECKLIST

INITIATIVE MEASURE 640

Shall state fishing regulations ensure certain survival rates for nontargeted catch, and commercial and recreational fisheries be prioritized?

☐ YES ☐ NO

INITIATIVE MEASURE 651

Shall the state enter into compacts with Indian tribes providing for unrestricted gambling on Indian lands within the state's borders?

☐ YES ☐ NO

REFERENDUM MEASURE 48

The Washington State Legislature has passed a law that restricts land-use regulations and expands governments' liability to pay for reduced property values of land or improvements thereon caused by certain regulations for public benefit. Should this law be APPROVED or REJECTED?

☐ APPROVED ☐ REJECTED

REFERENDUM BILL 45

Shall the fish and wildlife commission, rather than the governor, appoint the department's director and regulate food fish and shellfish?

☐ YES ☐ NO

SUBSTITUTE SENATE JOINT RESOLUTION 8210

Shall the selection process for chief justice be changed, and a constitutional process for reducing the supreme court be adopted?

☐ YES ☐ NO

STATE SUPREME COURT, POS. NO. 1 (Nonpartisan)

- ☐ Richard B. Sanders
☐ Rosselle Pekelis

SNOHOMISH COUNTY

EXECUTIVE

- ☐ Bob Drewel (D)
☐ Douglas Smith (R)

ASSESSOR

- ☐ Gail S. Rauch (D)
☐ Steve Reid (R)

AUDITOR

- ☐ Bob Terwilliger (D)
☐ David W. Freese (R)

CLERK

- ☐ Pam Daniels (D)
☐ Brenda Brown (R)

SHERIFF

- ☐ Patrick W. Murphy (D)
☐ Rick Bart (R)

TREASURER

- ☐ Bob Dantini (D)
☐ Tim Erwin (R)

LOCAL ELECTIONS

NOTE: To reduce publication costs, this edition of the voters pamphlet includes only jurisdictions in which candidates submitted statements. Other offices not included in this pamphlet may appear on your ballot.

Secretary of State Toll-Free Hotlines

1-800-448-4881

TDD (Telephone Device for the Deaf) 1-800-422-8683

Printed on recycled paper.
 Please recycle this Voters Pamphlet!



INITIATIVE MEASURE 640

TO THE PEOPLE

Note: The ballot title and explanatory statement were written by the Attorney General as required by law. The complete text of Initiative Measure 640 begins on page 15.

Statement for

REFORMING WASTEFUL FISHING METHODS

Vast quantities of under-sized fish, wild salmon that need protection, and seabirds are unnecessarily slaughtered in nets. Even harbor porpoises and other marine mammals are victims. Every valuable species of saltwater fish in Puget Sound is in low abundance, and many stocks of Washington salmon are far less numerous than the available habitat can support. Voting "yes" on I-640 will limit these senseless kills by preventing the use of the most wasteful fishing methods - such as drift gill netting and bottom dragging. A "yes" will also require the development and use of fishing methods that will "target" the intended catch and hasten the recovery of Washington's priceless sealife.

THE APPALLING LOSSES RESULTING FROM CANADIAN INTERCEPTIONS OF WASHINGTON SALMON

Canada harvests well over 70 percent of many Washington salmon stocks, including those listed, or about to be listed, under the Endangered Species Act. In "payment," commercial fishermen in northern Puget Sound and Alaska net many salmon originating in Canada. I-640 will require the Governor, and other State officials, to take action to reduce this trade-off. This is the quickest and least costly way of greatly increasing the numbers of salmon returning to Washington and the Columbia River.

ECONOMIC REFORM AND JOBS

Since the State's fisheries resources are public property, it follows that they should be used in a manner that sustains

Official Ballot Title:

Shall state fishing regulations ensure certain survival rates for nontargeted catch, and commercial and recreational fisheries be prioritized?

The law as it now exists:

Commercial and recreational fishing are regulated by the department of fish and wildlife. State statutes designate certain waters in which commercial fishing is prohibited or restricted, and authorize the director of fish and wildlife to adopt regulations concerning the time, place, and manner

the highest public benefit. Such considerations have been all but ignored by Washington's fisheries managers. I-640 will vastly increase the number of jobs in Washington.

I-640 HAS NO EFFECT ON FEDERALLY MANDATED TREATY INDIAN FISHING RIGHTS

For more information, call 1-800-357-FISH.

Rebuttal of Statement against

About 95% of "Washington's" commercial catch, by its 10,000 mostly part-time fishermen, occurs in Alaska where I-640 has no effect. Most commercial fishermen operate at a net loss in Washington waters.

I-640 will save hundreds of thousands of Washington salmon now senselessly killed, unreported, discarded, or caught in Canada. Thousands of *profitable* jobs will be created.

Much of our best habitat is unused because too many fish are being killed by wasteful fishing.

Voters Pamphlet Statement Prepared by:

FRANK HAW, Fisheries Biologist; DONALD W. MOOS, former Washington Director, Departments of Agriculture, Fisheries, & Ecology; PETER K. BERGMAN, Ph.D, Federal Snake River Salmon Recovery Team Member.

Advisory Committee: MIKE HAYDEN, President, American Sportfishing Association; LARRY SNYDER, Secretary, Vancouver Wildlife League; DAVID BECKER, President, Friends of the Cowlitz River; DR. TED VENTO, Acting President, The Recreational Fishing Coalition; STEVEN WRIGHT, President, Puget Sound Anglers.

in which fish may be taken in the waters of the state. The department has authority to work with other states and with federal and Canadian agencies to preserve and protect commercial and recreational fish stocks. The department is also authorized to operate salmon hatcheries.

The effect of Initiative Measure 640, if approved into law:

This measure would add new provisions to the state fisheries code. First, the measure would establish certain requirements for fishing gear. The director of fish and wildlife would be required to evaluate the extent to which different types of fishing gear unintentionally catch and kill other species of marine life. The measure would require the director of fish and wildlife to evaluate and regulate fishing gear based upon the mortality rate for these "nontargeted" species.

Second, after January 1, 1997, any gear type would be prohibited if its use would result in a mortality rate for "nontargeted" species in excess of fifteen percent. As to

certain salmon and sturgeon gear, this rate would be based on numbers of "nontargeted" fish killed. As to other types of gear, the fifteen percent would be measured by dividing the weight of the killed "nontargeted" fish by the total weight of the "targeted" catch.

Third, the measure would direct the department to prioritize fisheries based upon the economic value of the fishery and its associated industries. In the absence of economic studies to the contrary, chinook and coho salmon, and Lake Washington and Lake Wenatchee sockeye salmon, would be deemed more valuable in recreational fisheries, while pink, sockeye, and chum salmon would be deemed more valuable in commercial fisheries.

The department would be instructed to work to reduce Canadian harvest of fish originating in Washington. If necessary to achieve this goal, the director would be authorized to reduce Washington's harvest of fish originating in Canada. The department would be directed to operate salmon hatcheries in such a way as to contribute to fisheries while protecting natural fish stocks.

Statement against

20,000 JOBS WILL BE LOST

I-640 will cost Washington 20,000 jobs in our fishing-related industries. It will devastate our already beleaguered coastal communities, costing more than \$250 million annually. It will take away fishing families' share of Washington salmon and set aside much of our salmon resource exclusively for recreational fishing.

And worse yet, I-640 will not save a single salmon.

I-640 ELIMINATES FAMILY FISHING

I-640 will effectively outlaw family-owned fishing operations in Washington. The time-honored tradition of family fishing, a mainstay of Northwest culture for generations, will be lost. Sport and family fishermen should be working together to protect and enhance salmon for everyone. Instead, I-640 would destroy the livelihoods of thousands of Washington residents by needlessly prohibiting most fishing gear and reserving much of the salmon for sport only.

I-640 IS COMPLETELY UNFAIR

While Washington fishing families are standing in unemployment lines, commercial fishermen from Oregon and British Columbia will be catching our ocean-going salmon because the initiative doesn't apply to them. Washington sport fisheries will not be affected. It's just not fair for the few sport fishermen sponsoring I-640 to eliminate a way of life for Washington's fishing families while they and out-of-state fishermen continue harvesting our state's fish.

I-640 DOES NOT PROTECT OR RESTORE FISH HABITAT

Big aluminum companies on the Columbia River are key backers of this initiative. They want fishermen to pay for their destruction of fish habitat. But true conservationists know that habitat restoration is the only way to save our salmon. That's why eight of the largest conservation groups in Washington, including the Sierra Club and American Rivers, oppose I-640.

For more information, call (206) 282-3662.

Rebuttal of Statement for

I-640 will be economic disaster. 20,000 jobs and \$250 million will be lost to Washington communities. A traditional way of life for thousands of people will end.

I-640 will be terribly unfair. Washington citizens will sit and watch while Canadians and Oregonians catch our fish.

I-640 will not save sealife. The conservation community opposes it. It is an attempt to monopolize salmon by a few recreational fishers unwilling to cooperate to save fish for everyone.

Voters Pamphlet Statement Prepared by:

DON STUART, Salmon for Washington - No on I-640; ED OWENS, Washington Coalition of Ocean Fishermen; BOB BOROUGHS, Northwest Fisheries Association.

Advisory Committee: ROD MOORE, West Coast Seafood Processors Association; WILLIAM G. SALETIC, President, Peter Pan Seafoods, Inc.; LORI BODI, American Rivers, Northwest Office; SCOTT TAYLOR, Sierra Club.



INITIATIVE MEASURE 651

TO THE PEOPLE

Note: The ballot title was written by the Attorney General as required by law. The explanatory statement was written by the court. The complete text of Initiative Measure 651 begins on page 17.

Statement for

WE ALL WIN - YES ON I-651

WE ALL WIN - YES ON I-651 BOOSTS TOURISM AND CREATES JOBS

I-651 directly benefits the state's economy, creating true destination resorts and tens of thousands of new jobs for everyone. Indirectly, tribal gaming provides thousands of additional jobs and an economic base with adequate infrastructure in Indian country, where historically unemployment is very high and living conditions are very poor. Across the country, tribal gaming operations free to offer those games people want to play, have proven to be great contributors to regional economies. Yes on I-651 brings economic development home to the northwest.

WE ALL WIN - YES ON I-651 SHARES THE RESOURCE WITH THE PEOPLE

I-651 is good business for everyone. In partnership with tribes, I-651 shares the profits. I-651 shares ten percent of the profits from machine games, paid each year to every citizen who exercises the right to vote. In refreshing contrast to ballot measures asking voters to pay more taxes for promises of future growth, here is a measure that makes economic growth possible without raising taxes or increasing deficits a single dime. Every voter gets a check, which can be cashed or signed over to habitat restoration or to charitable causes. We all Win.

WE ALL WIN - YES ON I-651 CREATES SELF-SUFFICIENT TRIBAL GOVERNMENTS

The United States Congress enacted IGRA "to promote tribal economic development, tribal self-sufficiency, and

Official Ballot Title:

Shall the state enter into compacts with Indian tribes providing for unrestricted gambling on Indian lands within the state's borders?

The law as it now exists:

Gambling on Indian lands is governed by the federal Indian Gaming Regulatory Act (IGRA). Some forms of gambling (defined as "Class III" gaming by the IGRA), are permitted on Indian lands only if: (1) those gambling activities

strong tribal government." I-651 enables all tribes to accomplish those goals. I-651 generates the government revenue Tribes need to build schools and roads, provide basic utilities and health services, improve tribal courts and social services, etc. I-651 allows tribes to invest in long-term answers to long-term problems. I-651 enables tribes to help themselves. We all Win - Yes on I-651.

For more information, call (206) 572-6862.

Rebuttal of Statement against

Strong regulation wins. In addition to strong federal and tribal regulation, I-651 provides for State inspections and background checks of personnel, and State enforcement of high standards of integrity.

Taxpayers win. Gaming employees will pay millions directly into local, state and federal tax coffers, and spend millions more at local businesses.

All tribes win. I-651 secures the right of tribes with compacts to offer machine gaming under existing provisions for renegotiation.

Yes — We all win.

Voters Pamphlet Statement Prepared by:

JOHNKIEFFER, Vice-Chairman, Spokane Tribe of Indians; HERBERT "IKE" WHITISH, Chairman, Shoalwater Bay Indian Tribe; MICHAEL L. TURNIPSEED, Tribal Councilman, Puyallup Tribe of Indians.

Advisory Committee: WALLACE R. EDWARDS, former Chairman, Washington State Gambling Commission; SCHUYLER HOUSER, Director, Salish Kootenai College in Wellpinit; RONALD GUTIERREZ, Owner, Double Eagle Casino, Chewelah, Washington; SCOTT CROWELL, Attorney, Kirkland, Washington; KENNETH C. HANSEN, former Chairman, Samish Indian Tribe.

are permitted in the state where the Indian lands are located, and (2) the state and tribe have entered into a tribal-state compact to regulate that gambling. A compact may include descriptions of games permitted under the compact such as provisions relating to hours of operation, size of wager, size or number of tables or other facilities in operation, number and type of inspections and regulations, and related matters.

Several tribes are presently involved in lawsuits with the State regarding IGRA. One major issue in the suits is whether gambling devices such as slot machines and video poker should be authorized for use on Indian land through a compact.

The state gambling commission negotiates with Indian tribes who wish to enter into compacts concerning Class III gaming, and the governor has the authority to sign compacts on behalf of the state. A tribal-state compact may include only those types of gaming which are permitted under state law. Current Washington law prohibits certain types of gambling, such as slot machines and video poker, subject

to certain exceptions. Fifteen tribal-state compacts have been signed by the governor and are currently in place. These compacts allow various forms of gambling on terms and conditions negotiated in each agreement. No compact allows for the play of slot machines or video poker.

The effect of Initiative Measure 651, if approved into law:

This measure would offer a standard compact to all Indian tribes in the state as an alternative to the current tribal-state negotiation process. The standard compacts would authorize all forms of gambling on Indian lands, including slot machines and video poker, but not including sports betting, which presently is prohibited by federal law. The compact would contain no restrictions on hours of operations, size of wagers, or size or number of facilities. The standard compact would be deemed approved by the state effective fifteen days after the measure's approval,

(continued on page 14)

Statement against

Law enforcement officials, political leaders from both parties and even many Indian tribes are opposing Initiative 651. Why?

Initiative 651 would allow Las Vegas-style casinos on Indian trust land, both on and off reservations, with no law enforcement oversight.

- I-651 means gambling with no state law enforcement oversight.

- I-651 means casinos located anywhere there are Indian lands.

- I-651 means casinos that don't pay taxes or contribute in any way to local government, increasing the burden on ordinary taxpayers and hurting needed law enforcement, social service and school programs.

SPECIAL INTEREST LEGISLATION

This special interest legislation is sponsored by just three Indian tribes who have refused to negotiate gambling agreements with Washington state. Fifteen of Washington's 23 other tribes have legal, regulated and limited gaming. This initiative would not affect them.

NO LAW ENFORCEMENT OVERSIGHT

Current gambling in Washington is carefully regulated by the Gambling Commission. Strict enforcement assures games are honest and organized crime is kept away.

But, I-651 would allow no law enforcement oversight. Already, out-of-state gambling interests have contributed tens of thousands of dollars to promote I-651.

Even more disturbing, I-651 offers voters a payment in exchange for voting. Whether this provision ever survives

legal challenges, it is insulting to voters to suppose they would open the doors to unlimited gambling in exchange for what amounts to a payoff.

Washington voters should tell the gambling interests "NO!"

No unregulated casinos.

No casinos that don't pay taxes or contribute to local needs.

No to Initiative 651.

Rebuttal of Statement for

Only three of the state's 26 Indian tribes sponsor this initiative. Many other tribes oppose I-651 and know there is no need to change existing state laws.

The worst provision of I-651 is an attempt to bribe voters with a "share" of gambling profits. Don't be fooled. It's unlikely this insulting payoff to voters will ever survive a court challenge.

Already initiative promoters are under investigation for illegal campaign activities.

Vote no on Initiative 651.

Voters Pamphlet Statement Prepared by:

JOEL PRITCHARD, Washington Lieutenant Governor; NORM MALENG, King County Prosecutor.

Advisory Committee: KEVIN CRUM, President, Washington Charitable and Civic Gaming Association; RON ALLEN, Chairman, Jamestown S'Klallam Indian Tribe; RUSS GOODMAN, President, Restaurant Association of the State of Washington.



REFERENDUM MEASURE 48

**PASSED BY THE LEGISLATURE AND ORDERED
REFERRED BY PETITION
CHAPTER 98, LAWS OF 1995**

Note: The ballot title was written by the court. The explanatory statement was written by the Attorney General as required by law. The complete text of Referendum Measure 48 begins on page 20.

Vote cast by the 1995 Legislature on final passage:

HOUSE: Yeas, 69; Nays 27; Absent, 0; Excused, 2.

SENATE: Yeas, 28; Nays, 20; Absent 0; Excused, 1.

Statement for

Excessive government regulations cost each taxpayer more than \$6,000 each year. You can help change that by approving Referendum 48 which makes government weigh the cost before passing new regulations.

Your vote to approve Referendum 48 means that local and state government will be limited in their ability to take private property away from individuals.

This law requires government to: (1) State the reason they want to take private property; (2) Determine the cost of new regulations; (3) Identify alternatives to achieving the regulatory goal; (4) Take the least burdensome alternative; and, (5) If government takes land and sets it aside for public use (such as to protect wetlands, wildlife habitat or buffer zones), it requires them to follow the Constitution and compensate landowners for land that is taken.

PROPERTY OWNERS HAVE A RIGHT TO FAIR COMPENSATION WHEN GOVERNMENT REGULATIONS REDUCE THE VALUE OF THEIR PROPERTY.

Opponents of Referendum 48 want to repeal Washington State's existing private property rights law. The state Legislature held a public hearing on this law, thoroughly debated it and passed it overwhelmingly in both houses with the strong support of both Democrats and Republicans. This legislation is clearly in step with the public's desire to limit runaway government regulations.

WHEN ENVIRONMENTAL PROTECTION IS NEEDED, EVERYONE SHOULD PAY FOR IT, NOT JUST THE FAMILY WHO OWNS THE LAND.

Your vote to approve Referendum 48 means that you support balance and fairness and oppose burdensome

Official Ballot Title:

The Washington State Legislature has passed a law that restricts land-use regulations and expands governments' liability to pay for reduced property values of land or improvements thereon caused by certain regulations for public benefit. Should this law be **APPROVED** or **REJECTED**?

government regulations that unfairly reduce the value of private property. Your vote upholds our country's constitutional principles.

Rebuttal of Statement against

Opponents claim to support private property rights, but for years they — and the environmental community — have stopped the legislature from fairly balancing property rights against land use restrictions.

R-48 will not increase litigation, or prove costly, *unless* regulatory agencies pass new regulations to take even more private property for public benefits, i.e., wetlands, wildlife habitat and buffer zones. R-48 does *not* impact local zoning.

Approve Referendum 48 and protect your private property and water rights.

Voters Pamphlet Statement Prepared by:

DAN WOOD, Democratic Party Leader, Public Involvement Activist, Hoquiam; DAN SWECKER, Republican State Senator, Fish Farmer, Centralia; STEVE APPEL, Washington State Farm Bureau President, Farmer, Dusty.

Advisory Committee: BERTHA GRONBERG, retired Public School Teacher, Small Tree Farmer, Montesano; JIM CROSBY, Labor Union Leader, Pulp and Paper Workers, Tacoma; DALE FOREMAN, House Majority Leader, Orchardist, Attorney, Wenatchee; ELAINE EDWARDS, Small Business Owner, NFIB Member, Spokane; SID SNYDER, Senator, Democratic Caucus Chair, Long Beach.

The law as it now exists:

Both the federal and state constitutions require state and local governments to pay just compensation if they take private property for public use. Currently the government is required to compensate a property owner in two situations. First, when a government seeks to use private property for a public building, highway, or some other purpose, it must pay the property owner the value of the property taken. Second, when government regulations deprive a private property owner of fundamental property rights, the courts will find that a "taking" has occurred and will require compensation. Fundamental property rights include the right to possess the property and exclude other people from it, the right to dispose of the property, and the right to some reasonable use.

Under current law, governments may regulate the uses of private property for the public health, safety, and welfare. Such regulations do not constitute "takings" or require compensation unless they deprive property owners of fundamental rights. Courts may invalidate unduly oppressive

Statement against

If Referendum 48 passes, taxes will go up, government will grow, red tape will increase and there will be years of costly court battles.

That's why thousands of concerned Washingtonians, including the League of Women Voters, People for Fair Taxes, seniors and conservationists urge you to vote "NO" on Referendum 48, the "Takings" Initiative.

"TAKINGS" MEANS TAXPAYERS GET TAKEN

Experts and newspaper editors across the state say the "Takings" Initiative could cost Washington's taxpayers billions of dollars in studies, bureaucracy and lawsuits.

"TAKINGS" WILL CREATE NEW GOVERNMENT RED TAPE AND BUREAUCRACY

48 mandates new exhaustive, expensive government studies for every existing and future rule and safeguard at the local and state level that affects land use.

"TAKINGS" WILL CREATE ENDLESS, COSTLY COURT BATTLES

The "Takings" Initiative will result in years of expensive lawsuits and litigation.

READ REFERENDUM 48

Its backers downplay its cost to taxpayers, but the "Takings" Initiative speaks for itself: • You, the taxpayer, would be *required to pay* for costly, time consuming studies and new government red tape *whenever* a local community limits land use in the public interest (Section 3). • You, the taxpayer, would be *required to pay* developers and others *anytime* the public regulates land use that

regulations which are found to be unreasonable or not to further a legitimate governmental purpose. Courts have not required compensation where government regulations limit some uses of a property, or restrict development on a portion of the property, but leave the owner with economically productive uses for the remainder. Compensation may be required if a government imposes conditions on property development if the conditions are not roughly proportional to the impact created by the proposed development.

State and local governments are required to evaluate their proposed administrative actions to avoid unconstitutional "takings," but are not currently required to produce a formal written analysis of the effect of a proposed regulation on private property.

The effect of Referendum Measure 48, if approved into law:

The measure is intended to provide remedies to property owners in addition to any existing constitutional rights.

(continued on page 14)

results in any devaluation, even for basic zoning and building codes (Section 4).

"Takings" not only makes taxpayers pay for common-sense restraints on land, but on water as well—jeopardizing safe, quality communities.

We support our constitutionally guaranteed property rights. But everyone's against wasteful government, endless litigation and taxpayer payoffs to developers. This extreme "Takings" Initiative doesn't solve problems. It creates them.

Reject 48. It's the developer's dream. It's the taxpayer's nightmare.

For more information, call (206) 223-3728.

Rebuttal of Statement for

Don't be misled. Trust your own reading of Referendum 48. It won't solve a thing. Instead: • Taxpayers would pay for new, expensive government bureaucracy. • Taxpayers pay for years of costly lawsuits. • Taxpayers pay for huge payoffs to developers. • Taxpayers pay for reduced quality of life in our communities. 48 means developers profit. Taxpayers lose.

Existing law says our property rights are constitutionally guaranteed. *You* must protect your pocketbook and Washington's quality of life. **Reject 48.**

Voters Pamphlet Statement Prepared by:

KAREN VERRILL, President, League of Women Voters of Washington; MARY MARGARETHAUGEN, State Senator, Camano Island; EARL TILLY, Mayor, City of Wenatchee.

Advisory Committee: MICHAEL MCGOVERN, President, Washington State Council of Fire Fighters; RICK BENDER, President, Washington State Labor Council; KATHY FLETCHER, Executive Director, People for Puget Sound; LIZ PIRIENI, People for Fair Taxes; GENE LUX, Puget Sound Council of Senior Citizens.



REFERENDUM BILL 45

PROPOSED TO THE PEOPLE BY THE LEGISLATURE
CHAPTER 2, LAWS OF 1995, 1st SPECIAL SESSION

Note: The ballot title and explanatory statement were written by the Attorney General as required by law. The complete text of Referendum Bill 45 begins on page 21.

Vote cast by the 1995 Legislature on final passage:
HOUSE: Yeas, 73; Nays, 24; Absent, 0; Excused, 1.
SENATE: Yeas, 30; Nays, 14; Absent, 0; Excused, 5.

Statement for

YES: REFERENDUM 45 WILL TAKE POLITICS OUT OF ENHANCING OUR FISH AND WILDLIFE

Until 1987, Washington's abundant wildlife resources were managed by an independent commission that worked openly to enhance our fish and wildlife for all citizens to enjoy. Today, decisions are made in secret, by politicians and their appointees. The result? Decimated fish runs, shorter seasons and less access than ever — for all of us.

YES: REFERENDUM 45 WILL PUT US - NOT POLITICIANS - IN CHARGE OF NATURAL RESOURCES

An independent commission will: • Represent the concerns of sportfishing, the environment, commercial fishing, hunting and private property rights, and ensure public input in policymaking; • Enhance and regulate use of fish, shellfish and wildlife; • Protect access to fish for all, including recreational and commercial users; • Authorize equitable tribal, interstate and international agreements; • Have authority to hire and fire the Director of the Department of Fish and Wildlife, oversee department rules and regulations and approve the agency's budget.

YES: REFERENDUM 45 WILL HELP SAVE OUR SALMON, SHELLFISH AND WILDLIFE

Thirty-two states — including Idaho and Oregon — manage fish and wildlife independently, with commissions instead of politicians. They know decisions to improve natural resources are best made in public, by people with first-hand knowledge of fish and wildlife who will be accountable to all of us — not to politicians.

Official Ballot Title:

Shall the fish and wildlife commission, rather than the governor, appoint the department's director and regulate food fish and shellfish?

The law as it now exists:

By a law passed in 1993, the legislature merged the former department of fisheries and department of wildlife into a single department of fish and wildlife. The director of

the merged agency is appointed by the governor and serves at the governor's pleasure. The director has regulatory authority over shellfish, salmon and all fish species designated as "food fish." The director is authorized to enter into certain federal-state, tribal, interstate, and other agreements on behalf of the agency. The director has responsibility to manage the department and to implement programs which fulfill the agency's goals, policies, and objectives.

The fish and wildlife commission consists of nine members appointed by the governor for six-year terms and removable only for cause. The commission has responsibility to set goals, policies, and objectives to preserve, protect and perpetuate wildlife and "game fish" and the habitat associated with these species. The commission classifies wildlife and fish other than "food fish" and shellfish, and regulates hunting, trapping, recreational fishing and other recreational use of wildlife.

The effect of Referendum Bill 45, if approved into law:

If the proposal is enacted, the fish and wildlife commission will assume many responsibilities now assigned elsewhere. The commission rather than the governor would appoint the director. The director and the commission staff would serve at the commission's pleasure. In addition to its existing responsibilities for policy-making on wildlife and game fish, the commission would make policy and regulate fishing for shellfish and food fish, and would act for the state in negotiating certain federal-state, interstate, and state-tribal agreements. These changes would take effect July 1, 1996.

Statement against

VOTE NO—ON THIS REACH FOR POWER

Washington's fish and wildlife belong to *all* citizens. Recognizing this, existing law puts responsibility for managing this resource on the state's chief elected official, the governor, so *all* citizens will be heard.

This measure, however, turns over control of salmon, shellfish, eagles—in fact *all* fish and wildlife—to nine unelected, part-time political appointees, representing narrow interests. With overlapping six-year terms and no term limits, they're accountable only to themselves.

VOTE NO—ON MORE BUREAUCRACY AND COST

This measure *radically* changes how we protect fish and wildlife. Right now, a director named by the governor and confirmed by the state Senate manages the Department of Fish and Wildlife in an international setting that often requires instant decisions to save fish and wildlife.

This measure hands over fish and wildlife management to a part-time commission — a new layer of bureaucracy — whose members' conflicting interests will clash, bog things down and generate litigation as they argue how to apportion fish and wildlife and protect our precious heritage.

Worse, this commission would take over *all* of the state's negotiations on fish and wildlife with Canada, the White House, tribes and Alaska, Oregon, Idaho and Montana. The President of the United States answers phone calls from a governor when international salmon negotiations are in a crisis. Is that likely if an unknown commissioner telephones? No!

VOTE NO—ON MINORITY RULE

Amazingly, under this measure the minority can rule with only four of the nine making a decision binding on all of us!

VOTE NO—ON SILENCING THE VOTERS

A governor *must* listen to voters. A commission doesn't need to.

Rebuttal of Statement for

This law *for the first time in our state's history* allows those profiting from the killing of fish and wildlife — fish packers, trappers, guides, others — to manage fish and wildlife.

Call this independence? No! It's disguised special-interest politics aimed at wresting control of fish and wildlife from the state's voters.

Salmon are endangered, disappearing, in California, Oregon and Idaho, while commissioners squabble.

Vote No! on Referendum 45. Put fish and wildlife above special interests.

Voters Pamphlet Statement Prepared by:

KAREN FRASER, Chair, Senate Committee on Ecology and Parks; BOBBASICH, House Ranking Minority Member, Natural Resources Committee.

Advisory Committee: DAN EVANS, Former Governor, State of Washington, Former U.S. Senator; BOOTH GARDNER, Former Governor, State of Washington.



SUBSTITUTE SENATE JOINT RESOLUTION 8210

PROPOSED CONSTITUTIONAL AMENDMENT

Official Ballot Title:

Shall the selection process for chief justice be changed, and a constitutional process for reducing the supreme court be adopted?

Note: The ballot title and explanatory statement were written by the Attorney General as required by law. The complete text of Substitute Senate Joint Resolution 8210 begins on page 28.

Vote cast by the 1995 Legislature on final passage:
HOUSE: Yeas, 68; Nays, 23; Absent, 2; Excused, 4.
SENATE: Yeas, 40; Nays, 6; Absent, 0; Excused, 3.

Statement for

SSJR 8210 STRENGTHENS THE JUSTICE SYSTEM BY REFORMING THE WASHINGTON SUPREME COURT

SELECTING THE MOST QUALIFIED CHIEF JUSTICE

The Chief Justice is the chief executive and top administrator for the court system. Under current law, the Chief Justice is randomly chosen by reverse seniority.

8210 authorizes the Court to select its own Chief Justice every four years based on the requirements of the job.

THE SIZE OF THE COURT

The Washington Supreme Court has more members (nine) than 44 other states. Reducing the Court's size will save tax dollars and increase efficiency while maintaining quality, diversity and regional balance.

A seven-judge Court would save taxpayers over \$1.4 million per biennium.

Currently the Constitution permits the Legislature to increase the size of the Court. 8210 creates an orderly process for *reducing* the Court.

No sitting judge will be removed. Instead, new judges would not be appointed until the Court reaches the reduced size established by reform legislation.

SUPPORT COMMON-SENSE COURT REFORM VOTE YES FOR SSJR 8210

Recommended by an independent citizens commission, SSJR 8210 is endorsed by: • Washington State Council of Police Officers • League of Women Voters • Washington State Bar Association • Association of Washington Business • Council on Crime and

Delinquency • Washington Association of Prosecuting Attorneys • Washington State Patrol Troopers Association • Law Enforcement Administrators of Washington • Washington State Trial Lawyers Association • Washington State Association of County Clerks • Greater Seattle Chamber of Commerce • Justice Richard Guy, Chair, Gender and Justice Commission • Freddie Mae Gautier, community leader • State Senate Majority Leader Marc Gaspard • Grant County Superior Court Judge Evan Sperline • State Representative Marlin Appelwick • Yakima County Prosecutor Jeff Sullivan • State Representative Larry Sheahan • Okanogan County District Court Judge David Edwards • King County Executive Gary Locke.

Rebuttal of Statement against

Saving \$1.4 million per biennium is not "penny wise, pound foolish"! 8210 is common-sense reform supported by citizens, law enforcement, legal organizations and good government groups. *The arguments against are inaccurate.* 8210 creates no new powers. Instead, it allows the full Court to select its own Chief — to lead the judiciary, protect public safety, reduce backlogs and improve justice. Court downsizing elsewhere did *not* harm diversity. Support reasonable, needed reform. Please vote YES.

Voters Pamphlet Statement Prepared by:

BARBARA DURHAM, Chief Justice; JAMES A. ANDERSEN, former Chief Justice; VERNON PEARSON, former Chief Justice.

Advisory Committee: ADAM SMITH, Chair, Senate Law and Justice Committee; TIM HICKEL, Vice Chair, House Law and Justice Committee; WILLIAM GATES, Chair, Courts 2000 Commission; ROBERT F. BRACHTENBACH, former Chief Justice; KAREN VERRILL, President, Washington League of Women Voters.

The law as it now exists:

The state constitution currently provides that the supreme court judge having the shortest term to serve will be the chief justice. If two judges have the same short term to serve, the other judges determine which of the two will be chief justice. In case of the absence of the chief justice, the judge having the next shortest term presides. Under these provisions, the position of chief justice rotates every two years.

The constitution sets the minimum number of supreme court judges at five, but provides the legislature may increase the number of supreme court judges. Under current law there are nine supreme court judges. Some questions may exist regarding whether the legislature may also decrease the number of supreme court judges and how any reduction would be accomplished. The constitution provides that if a vacancy occurs on the supreme court, the governor shall fill the vacancy by appointment.

Statement against

THERE IS NO NEED FOR SSJR 8210

Since adoption of our State Constitution, the power of the Supreme Court is shared equally by all justices. The chief justice position rotates every two years, based on seniority and term of office. No legitimate claim has been made, or could be made, suggesting this system needs fixing.

DON'T GIVE THE CHIEF JUSTICE MORE POWER

The term of office of the chief justice should not be expanded. Too much power would be placed in one justice's hands. If it is the pleasure of the majority of the Court, SSJR 8210 would allow a chief justice to serve more than one four-year term. A longer term puts more power in one individual and reduces the opportunity for diversity of background and experiences. Such diversity among the individual justices is good for our system by providing different and varied input into the decision-making process.

SSJR 8210 COULD LEAD TO A LESS REPRESENTATIVE COURT

SSJR 8210 does not change the size of the Court. However, a secondary purpose of this Amendment is to provide a mechanism for reduction of the size of the Court. Our Supreme Court has had nine members since 1909. A reduction in the size of the Court would serve to deny diversity and severely restrict geographical representation. If there is to be a reduction in the size of the Court, this decision should be made by the voters.

It is estimated that reducing the size of our Supreme Court from nine justices to seven justices would save

The effect of SSJR 8210, if approved into law:

The proposed constitutional amendment would make three changes. First, it would change the method of selection of the chief justice. It would provide for the election of the chief justice by majority vote of the judges of the supreme court from among their own membership. In the absence of the chief justice, the remaining judges would select one of their members to serve as acting chief justice. Second, it would provide for selection of a chief justice every four years. Third, it would provide that the governor will make an appointment to a vacancy on the supreme court only if necessary to maintain the number of judges specified by the legislature. Under this change, if the legislature reduced the number of supreme court judges, the reduction would be implemented as vacancies occur. The governor would not fill vacancies on the supreme court unless the membership of the court was below the number of judges specified by the legislature. The constitutional provision requiring a minimum of five supreme court judges would not be changed.

taxpayers dollars. The savings would be penny-wise and pound-foolish.

VOTE NO

SSJR 8210 IS UNNECESSARY AND BAD PUBLIC POLICY

Rebuttal of Statement for

An efficient system has worked since 1909 and now they want to jeopardize it for a few dollars. With fewer justices the supreme court's efficiency will decrease — the court will become more backlogged and its decisions less thorough. Our current system has been carefully crafted to equalize power on the court and throughout the state, do not change it for a few dollars, especially with no citizen vote.

Voters Pamphlet Statement Prepared by:

SHIRLEY WINSLEY, State Senator; GRACE COLE, State Representative.



INITIATIVE MEASURE 651

The effect of Initiative Measure 651, if approved into law (cont.):

subject to ratification by any tribe which has not negotiated a compact by November 7, 1995. Tribes which are currently operating under more limited tribal-state compacts would continue to do so until their current compacts expire, or are otherwise terminated.

Under the proposed standard compact, Indian gaming will be regulated by the tribal governments. The state may conduct background checks on primary management officials and key employees and have limited rights to inspect Indian gaming facilities. The state may provide other investigative and consulting services to tribes at their request. The proposed standard compact would provide for mediation of disputes between the state and any tribe, and for judicial review in federal courts. The state and tribes would consent to suit in federal court on compact-related matters, provided that all other remedies have been exhausted.

The compact would provide that tribes ratifying it make a monthly payment of ten percent of net gaming revenues from the utilization of slot machines and other "player-activated electromechanical gambling devices" into a fund created and managed under tribal authority. The State Auditor and two other persons who are not tribal members would serve on the fund's board of directors. The revenue in the fund would be distributed annually to all registered voters who voted in the most recent statewide election. At the voter's option, a voter's portion of the distribution could be donated to a qualifying charity. Tribes would be excused from making these payments of the state authorized slot machines or similar devices on non-tribal land in the state.



REFERENDUM MEASURE 48

The effect of Referendum Measure 48, if approved into law (cont.):

If a state or local government regulates or imposes a restraint on a portion or parcel of private property for public benefit (including wetlands, fish and wildlife habitat, buffer zones or other public benefit designation), the government would be required to pay full compensation to the owner of the property for any reduction in the property's value. The governmental entity would not have to pay compensation if, absent the regulation, a public nuisance would result. If a government did not pay compensation as required by the measure, the use of the land could not be restricted.

"Private property" would be defined to include land and interests in land or improvements on land, proprietary water rights, and any crops, forest products or resources capable of being harvested or extracted and protected by the state or federal constitutions. "Restraint of land use" would be defined as any action, requirement, or restriction by a governmental entity, other than actions to prevent or abate public nuisances, that limits the use or development of private property.

The state would be responsible for the compensation liability of other governmental entities for any action which restricts the use of property when such action is mandated by state law or any state agency.

Before adopting any regulation of private property or restraint of land use, a governmental entity would be required to prepare a statement containing a full analysis of the total economic impact on private property of such regulation or restraint. The statement must be made available to the public at least 30 days before the adoption of the regulation or imposition of the restriction. The governmental entity would be required, if it chose to enact the regulation or restriction, to adopt the alternative which had the least possible impact on private property and still accomplished the necessary public purpose.

Governments would be prohibited from requiring any private property owner to provide or pay for any studies, maps, plans, or reports used in decisions to consider restricting the use of private property for public use.

Any private property owner could seek to enforce this measure in the courts, and any prevailing plaintiff would be entitled to recover the costs of litigation, including reasonable attorney's fees.



COMPLETE TEXT OF Initiative Measure 640

AN ACT Relating to the protection of living marine resources including salmon, steelhead, other anadromous trout and char, and sturgeon from wasteful and harmful fishing practices; amending RCW 75.12.010; adding a new chapter to Title 75 RCW; and providing an effective date.

BE IT ENACTED BY THE PEOPLE OF THE STATE OF WASHINGTON:

NEW SECTION. Sec. 1. PURPOSE. The purposes of this chapter are to:

(1) Declare a state policy that will promote restoration of the state's marine and anadromous fish stocks while promoting economically viable fisheries that do not unnecessarily harm fish, birds, and other animals not intended for harvest;

(2) Promote efforts which will minimize Canadian and other foreign interception of Washington salmon and steelhead stocks;

(3) Require coordination by the department with federal agencies to minimize potential impacts of fishing on seabirds and other protected animals; and

(4) Accord priority to those fisheries that have been shown to have the greatest value to the people of the state of Washington.

NEW SECTION. Sec. 2. FINDINGS. Important fisheries for salmon and other species in Washington state have been closed or severely restricted because of the depleted condition of important natural stocks, resulting in lost economic, recreational, and cultural opportunities for Washington citizens. Wasteful fishing practices have significantly contributed to the problems. In many areas of Washington where fisheries are permitted, harvestable surpluses of fish are mixed with nontargeted aquatic creatures, such as birds, shellfish, forage species, juvenile and unmarketable fish, and weak natural or other nontargeted salmon and other anadromous fish stocks. The fishing gear employed often catches both targeted and nontargeted animals indiscriminately. This by-catch can be greatly reduced by fishing in areas where there is little mixing of desired catch and potential by-catch. Where by-catch cannot be avoided in order to conduct an otherwise valuable fishery, by-catch can be minimized by allowing only fishing gear which results in low by-catch mortalities.

Salmon hatcheries often produce more harvestable surpluses than natural stocks, with the result that nonselective fisheries targeting on hatchery fish overharvest commingled natural salmon stocks. Important natural salmon stocks are also impacted by hatchery management policies that do not address issues of competition between hatchery and natural stocks, spread of disease, and other ecological interactions. Used properly and in conjunction with regulations permitting fishing gear and methods that can harvest selectively, hatcheries can provide great benefits and support natural stock recovery by rearing critical stocks. Washington salmon hatcheries should be managed for the specific goal of contributing to important fisheries in a manner that is consistent with protection and rehabilitation of natural stocks.

Excess harvest of threatened natural salmon stocks originating in Washington waters has also resulted from Canadian interception of large numbers of Washington salmon stocks, including endangered Columbia river chinook and other stocks under consideration for listing under the endangered species act. Canada has become the largest exploiter of many salmon stocks originating in Washington

waters and the catch disparity between United States and Canadian fishers has been exacerbated by closures in Washington while fishing in Canada has continued unabated, often targeting the Washington stocks sought to be protected by the fishing closures in Washington. Canadian harvest of Washington salmon is subject to the terms of the Pacific salmon treaty intended to control the extent of each country's harvest of the other's salmon. Washington fishers catch large numbers of Canadian salmon, primarily sockeye and pink salmon homing to the Fraser river, while Canadian fishers intercept Washington salmon, primarily chinook and coho salmon, resulting in further depletion of Washington salmon stocks.

Despite the vast expenditures by the citizens of the state of Washington to maintain and enhance salmon stocks in their state, fishing regulations and policies have resulted in allocations among nontreaty fishers without regard to the value to the people of the state of Washington. Chinook and coho salmon have been proven to be more valuable in recreational fisheries, while pink, chum, and sockeye salmon have generally proven to be more suitable and valuable in commercial fisheries, except where shown to be more valuable in recreational fisheries.

NEW SECTION. Sec. 3. DEFINITION. As used in this chapter, "by-catch" means nontargeted fish, shellfish, and protected animals that are captured or destroyed while fishing.

NEW SECTION. Sec. 4. GUIDELINES. The people authorize and direct the department and the governor of the state of Washington to take the following actions:

(1) Provide and apply clear standards consistent with the provisions of this chapter for controlling destruction during fishing operations of fish and other sea life that are not intended for harvest;

(2) Permit only fishing gear and methods of harvesting fish and shellfish that are consistent with the policies and by-catch mortality standards specified in this chapter;

(3) Manage salmon and steelhead hatcheries and hatchery stocks to contribute to fisheries while protecting or enhancing natural stocks;

(4) Minimize Canadian and other foreign interceptions of salmon and steelhead originating in Washington, if necessary by adopting regulations to reduce Washington interception of Canadian fish;

(5) Maximize economic benefit to the state and its citizens in allocating harvestable food fish and shellfish;

(6) Consult and coordinate with federal officials to minimize potential impacts of fishing on seabirds and other federally protected species; and

(7) Develop and evaluate fishing methods that comply with the by-catch standards in section 5 of this act that would become legal on January 1, 1997, if currently legal methods cannot comply with such standards.

NEW SECTION. Sec. 5. BY-CATCH STANDARDS. (1) The purpose of this subsection is to protect nontargeted salmon, steelhead, other anadromous trout and char, and sturgeon from fisheries on harvestable stocks of salmon and sturgeon. Salmon gear evaluations shall be based upon the average of the two observed mortalities for chinook and coho salmon. Sturgeon gear evaluations shall utilize observed mortalities for sturgeon. The director may require more specific evaluations when deemed appropriate. Evaluations shall involve life stages of fish most commonly exposed to the gear and be conducted under conditions representative of when the gear would be utilized. Fishing gear types shall not be used unless capable of live releasing such fish with no greater than fifteen percent mortality, in numbers of fish, during 1997 and thereafter.

(2) The times and locations legal gear may be operated shall be determined by the director. When and where a gear type is deemed



COMPLETE TEXT OF Initiative Measure 640 (cont.)

to pose a significant threat to the abundance of by-caught salmon, steelhead, other anadromous trout or char, sturgeon, sea birds, or other protected animals, the area shall be closed to fishing with such gear. When and where it is determined that such by-catch will have a lesser impact, fisheries may be conducted only if the gear is operated in accordance with procedures qualifying it for use under the by-catch standard. When and where it is determined that a fishery does not have significant effect on the abundance of such by-catch, such operating procedures may be waived. Waiving of gear operating procedures shall be based only on results of test fishing and catch monitoring.

(3) Any gear type used for food fish and shellfish other than salmon and sturgeon that results in by-catch mortality of nontargeted or unmarketable fish or shellfish that cumulatively weigh in excess of fifteen percent of the live weight of the catch of targeted stocks during 1997 and thereafter is not permitted.

(4) If the director determines that by-catch standards prevent nontreaty fishers from harvesting their full share of sockeye, pink, or chum salmon, in accordance with rulings under United States of America et al. v. State of Washington et al., Civil No. 9213, United States District Court for Western District of Washington, February 12, 1974, and *Sohappy v. Smith*, 302 F. Supp. 899 (D. Oregon, 1969), as amended, affirmed, and remanded 529 F.2d 570 (9th Cir., 1976), existing gear types conforming to the by-catch standards shall be given maximum opportunity for harvesting the targeted stocks consistent with other provisions of this section. If additional harvest levels are required to achieve nontreaty shares the director shall not be constrained by previous provisions of this title after January 1, 1997, for authorizing other gear types that satisfy the by-catch standard. Commercial license applications for new gear types, authorized by the director, shall be limited to holders of 1996 commercial salmon fishing licenses. However, the issuance of such licenses shall be limited to a number consistent with the economic welfare of commercial salmon licensees and the citizens of the state.

NEW SECTION. Sec. 6. EVALUATING SELECTIVITY OF FISHING METHODS. The department is directed to study and establish by-catch mortality rates for the various types of existing authorized fishing gear. Existing studies shall be utilized when deemed appropriate by the director. If such studies are unavailable, by-catch mortality rates shall be based upon actual or simulated conditions intended to duplicate the operation of representative gear types in typical fishing situations. Mortality rates shall include and are limited to the sum of immediate mortality, mortality following twelve hours in confinement, and losses to predators while fish and shellfish are contained in or held by the gear. Applicability of findings of these studies to various times, places, and other circumstances shall be determined by the director.

The director shall establish and enforce rules consistent with maintaining the by-catch standards in the state's fisheries.

NEW SECTION. Sec. 7. ELIMINATION OF NONCONFORMING FISHING GEAR AND METHODS. This chapter shall not be construed to prohibit the use of gear that does not comply with the by-catch standards until January 1, 1997, when noncomplying gear is illegal. Nonconforming salmon and sturgeon fishing gear shall not be licensed by the state for use after this date.

NEW SECTION. Sec. 8. HATCHERY POLICY. Salmon hatch-

eries operated by the state of Washington shall be managed and operated to contribute to fisheries in a manner that is consistent with the protection and rehabilitation of natural stocks.

NEW SECTION. Sec. 9. REDUCTION OF FOREIGN INTERCEPTION OF WASHINGTON FISH STOCKS. The policy of the state of Washington is to reduce Canadian and other foreign interceptions of salmon and steelhead originating in Washington. The governor and other Washington state officials responsible for negotiation of future fisheries agreements with Canada and other nations shall strive to reduce interceptions of such fish originating in Washington. If it is necessary to reduce Washington interception of fish originating in Canada in order to achieve this goal, the director is authorized and directed to adopt appropriate rules to achieve such reduction.

NEW SECTION. Sec. 10. VALUE OF FISHERIES TO BE CONSIDERED. In enacting or adopting rules affecting fisheries for food fish and shellfish in the state of Washington, the director is authorized and directed to consider economic values, including those of the recreational, i.e. personal use, fishery and its associated industries, and accord priority to those fisheries that have the greatest value to the citizens of the state of Washington. Chinook and coho salmon have generally been proven more valuable in recreational fisheries and should be utilized in this manner except where economic studies show that commercial catch is more valuable. Pink, chum, and sockeye salmon have been shown to be more suitable and valuable in commercial fisheries except for Lake Washington and Lake Wenatchee sockeye salmon, which are more valuable when utilized in a recreational fishery. The department may modify these comparative values only when based on economic studies employing generally accepted statistical and economic procedures and methodology.

NEW SECTION. Sec. 11. PERFORMANCE AUDIT. The state auditor is directed to annually complete for the governor and publish for the citizens a performance audit relating to compliance with the mandates of this chapter on the part of the department.

NEW SECTION. Sec. 12. CONSULTATION WITH OREGON. After the effective date of this act, the governor and the director shall consult with the state of Oregon and urge adoption and implementation of the principles and policies set forth in this chapter by the state of Oregon in order to maintain and enhance Columbia river fish stock.

NEW SECTION. Sec. 13. LEGISLATIVE FUNDING. The legislature shall appropriate the necessary funds to carry out the provisions of this chapter.

Sec. 14. RCW 75.12.010 and 1983 1st ex.s. c 46 s 46 are each amended to read as follows:

(1) Except as provided in this section, it is unlawful to fish commercially for salmon within the waters described in subsection (2) of this section.

(2) All waters east and south of a line commencing at a concrete monument on Angeles Point in Clallam county near the mouth of the Elwha River on which is inscribed "Angeles Point Monument" (latitude 48° 9' 3" north, longitude 123° 33' 01" west of Greenwich Meridian); thence running east on a line 81° 30' true across the flashlight and bell buoy off Partridge Point and thence continued to longitude 122° 40' west; thence north to the southerly shore of Sinclair Island; thence along the southerly shore of the island to the most easterly point of the island; thence 46° true to Carter Point, the most southerly point of Lummi Island; thence northwesterly along the westerly shore line of Lummi Island to where the shore line



COMPLETE TEXT OF Initiative Measure 640 (cont.)

intersects line of longitude 122° 40' west; thence north to the mainland, including: The southerly portion of Hale Passage, Bellingham Bay, Padilla Bay, Fidalgo Bay, Guemes Channel, Skagit Bay, Similk Bay, Saratoga Passage, Holmes Harbor, Possession Sound, Admiralty Inlet, Hood Canal, Puget Sound, and their inlets, passages, waters, waterways, and tributaries.

(3) The director may authorize commercial fishing for sockeye salmon within the waters described in subsection (2) of this section during the period June 10 to July 25 and for other salmon from the second Monday of September through November 30, except during the hours between 4:00 p.m. of Friday and 4:00 p.m. of the following Sunday.

(4) The director may authorize commercial fishing for salmon ~~((with gill net gear))~~ prior to the second Monday in September within the waters of Hale Passage, Bellingham Bay, Samish Bay, Padilla Bay, Fidalgo Bay, Guemes Channel, Skagit Bay, and Similk Bay, to wit: Those waters northerly and easterly of a line commencing at Stanwood, thence along the south shore of Skagit Bay to Rocky Point on Camano Island; thence northerly to Polnell Point on Whidbey Island.

(5) Whenever the director determines that a stock or run of salmon cannot be harvested in the usual manner, and that the stock or run of salmon may be in danger of being wasted and surplus to natural or artificial spawning requirements, the director may authorize units of ~~((gill net and purse seine))~~ gear conforming to by-catch standards in any number or equivalents, by time and area, to fully utilize the harvestable portions of these salmon runs for the economic well being of the citizens of this state. Gill net and purse seine gear other than emergency and test gear authorized by the director shall not be used in Lake Washington.

(6) The director may authorize commercial fishing for pink salmon in each odd-numbered year from August 1 through September 1 in the waters lying inside of a line commencing at the most easterly point of Dungeness Spit and thence projected to Point Partridge on Whidbey Island and a line commencing at Olele Point and thence projected easterly to Bush Point on Whidbey Island.

NEW SECTION. Sec. 15. EFFECTIVE DATE. This act shall take effect January 1, 1996.

NEW SECTION. Sec. 16. SEVERABILITY. If any provision of this act or its application to any person or circumstance is held invalid, the remainder of the act or the application of the provision to other persons or circumstances is not affected.

NEW SECTION. Sec. 17. CAPTIONS. Captions used in this chapter do not constitute any part of the law.

NEW SECTION. Sec. 18. CODIFICATION. Sections 1 through 13 and 15 through 17 of this act shall constitute a new chapter in Title 75 RCW.

PROJECT VOTE SMART

Information about federal office holders is available free to Washington voters from Project Vote Smart, a national, nonpartisan program started in 1992. This includes information about voting records, campaign finances, past and current position statements and performance evaluations. Voters can telephone Project Vote Smart at 1-800-622-7627. World wide web address is: <http://www.vote-smart.org>



COMPLETE TEXT OF Initiative Measure 651

AN ACT Relating to gaming by tribes; and adding new sections to chapter 9.46 RCW.

BE IT ENACTED BY THE PEOPLE OF THE STATE OF WASHINGTON:

NEW SECTION. Sec. 1. A new section is added to chapter 9.46 RCW to read as follows:

The State shall adopt a compact authorizing full class III gaming under the Indian Gaming Regulatory Act of 1988 (102 Stat. 2467; 25 U.S.C. sec. 2710) with all Indian tribes with Indian lands within the external boundaries of the state.

(1) The public policy and law of the state is that all Indian tribes with Indian lands within the state are entitled to offer unrestricted Class III gaming under a compact as defined under the Indian Gaming Regulatory Act of 1988. For all Indian tribes with Indian lands within the external boundaries of the state that do not have a compact with the state as of November 7, 1995, Washington State shall be deemed to have executed a compact stating this public policy within fifteen days of the certification of the passage of this section by the secretary of state. When the agreed upon terms of existing compacts with other Indian tribes expire, those Indian tribes may ratify the compact executed by the state as the result of this section. The compact must not have market restrictions as to the operation of class III gaming on Indian lands in the state with regard to size of wager, size of facility, hours of operation, number of games, number of facilities, or type of gaming employed, and there must not be market restrictions on the use of player-activated electromechanical gambling devices. The compact stating this public policy and governing class III gaming is the compact required under section 2 of this act.

(2) The compact must provide that all of the Indian tribes who ratify this compact shall make a monthly payment of ten percent of the net gaming revenues from the utilization of all player-activated electromechanical gambling devices into a fund created and managed by FTS Enterprises, an intertribal entity established as an extension of tribal governing bodies under the laws of the participating tribes. "Net gaming revenues" is defined as gross revenue minus all revenues paid or allocated as prizes. The compact shall provide that the state auditor and two other persons who are not members of any Indian tribe with Indian lands in Washington State and, who are registered voters in the state, be appointed as directors of FTS Enterprises upon the creation of the fund. The state auditor may decline the appointment if he is otherwise precluded by the laws of the state from accepting the appointment; in which event the existing directors must appoint a replacement.

(3) The compact must provide that FTS Enterprises distribute the fund's revenue annually on a per capita basis minus operating expenses to all of the registered voters in the state who have voted in the most immediate previous statewide general election. FTS Enterprises shall have its records audited by a certified public accounting firm, annually. The audit shall be included in an annual report published and presented to the state auditor.

(4) If at any time after the effective date of this act, the state authorizes, by statute, rule or regulation, the operation of any player-activated electromechanical gambling device, other than



COMPLETE TEXT OF Initiative Measure 651 (cont.)

one licensed and in actual operation before March 1, 1995, anywhere within the state not on Indian lands, or not authorized by this act, then the financial obligations of the Indian tribes under the compact signed as a result of this act shall cease. After final distribution is made, further payment by the tribes and distribution to the registered voters must not from that time occur. In such event, all other provisions of the compact must remain in full force and effect.

NEW SECTION. Sec. 2. A new section is added to chapter 9.46 RCW to read as follows:

The compact adopted under section 1 of this act must read as follows:

Tribal State Compact for Class III Gaming by Tribes with Indian Lands in the State of Washington

RECITALS

WHEREAS the voters of the State of Washington have set forth, by Initiative, the clear public policy that all Indian tribes within the state are entitled to offer unrestricted Class III gaming under a compact defined by the federal Indian Gaming Regulatory Act of 1988; and

WHEREAS the federal Indian Gaming Regulatory Act of 1988 provides that a compact governing the operation of Class III gaming shall be submitted to the Secretary of Interior and published in the federal register;

ACCORDINGLY, the State of Washington agrees to the following terms and conditions upon the ratification of this compact by any Indian tribe with Indian lands within the state.

PART I. Effective upon Ratification by Tribe

This compact is entered into by the State of Washington and any federally recognized Indian tribe with Indian lands within the exterior boundaries of the State of Washington that ratifies this compact in accordance with the tribe's constitution and applicable tribal laws and regulations. A Compact already in existence between a tribe and the State of Washington remains in effect until the compact expires by its express terms, after which time, the tribe may ratify this Compact.

PART II. Authorized Class III Gaming

(1). **Authorization of games.** A tribe may offer any game with the elements of prize, consideration, and chance that (a) is authorized by a tribe pursuant to a valid tribal ordinance that is approved by the National Indian Gaming Commission; and (b) is played according to specific rules, the copies of which are available to patrons. There must not be market restrictions as to the operation of Class III gaming including, but not limited to, size of wager, size of facility, hours of operation, number of games, number of facilities, or type of gaming employed.

(2). **Authorization of Gambling Devices.** A tribe is entitled to use any gambling device as defined by RCW § 9.46.0241, as in

effect on January 1, 1995, so long as a true and correct prototype of such device has been certified by, or would meet the technical equipment standards of authorized regulatory bodies in the State of Nevada, or the State of New Jersey, or the device is exempted from certification requirements under the laws of the State of Nevada, or the State of New Jersey. If Nevada or New Jersey changes its laws, the devices include devices that are or would be lawful in Nevada or New Jersey under the laws, rules, and regulations in effect on January 1, 1995.

(3). **Age Limitations.** A person under the age of eighteen (18) may neither participate in a gaming operation, nor be allowed on the Class III gaming floor during actual hours of operation. Should alcoholic beverages be offered on any portion of the gaming floor under applicable law, then a patron under the age of twenty-one (21) may not be permitted on that portion of the gaming floor during actual hours of operation.

PART III. VOTERS' DIVIDEND FUND

(1). **Ten Percent Dividend.** The Tribes shall make a monthly payment of ten percent of the net gaming revenues from the utilization of all player-activated electromechanical gambling devices into a fund created and managed by FTS Enterprises, an intertribal entity established as an extension of tribal governing bodies under the laws of participating tribes with Indian lands in Washington State, who exercise their sovereign authority to participate in FTS Enterprises. "Net gaming revenues" is defined as gross revenue minus all revenues paid or allocated as prizes. Ratification of this compact by a tribe must include acknowledgment and consent to abide by the policies and procedures of FTS Enterprises consistent with the terms of this compact. Specifically, the tribe consents to providing reasonable access to books and records necessary to conduct a verifiable audit of the tribal gaming operations to ensure that FTS Enterprises and tribes are meeting their obligations to the voters of the state under this compact. The state auditor and two other persons who are not members of any Indian tribe with Indian lands in Washington State, who are registered voters of the state, shall be appointed by the Board as Directors of FTS Enterprises upon the creation of the fund. The state auditor may decline the appointment if he is otherwise precluded by the laws of the state from accepting the appointment; in which event the existing directors must appoint a replacement.

(2). **Management & Supervision.** The compact shall provide that FTS Enterprises distribute the fund's revenue annually on a per-capita basis minus operating expenses to all of the registered voters in the state who have voted in the most immediate previous state-wide general election. The fund must allow those entitled to a distribution to donate their annual distribution payment to separate funds created by FTS Enterprises to support nonprofit, private programs in the areas of education, environmental protection, law enforcement, and natural resources restoration. FTS Enterprises shall have its records audited by a certified public accounting firm, annually. The audit shall be included in an annual report published and presented to the state auditor.

(3). **Exclusivity to Indian Country.** If the state authorizes, by statute, rule or regulation, the operation of any player-activated electromechanical gambling device, other than those licensed and actually in play on or before March 1, 1995, anywhere within the state not on Indian lands, or not authorized by this act, then the financial obligations of the Indian tribes under the compact signed as the result of the passage of this act cease immediately. After a final prorated distribution is made, further payment by the tribes and distribution to the registered voters must not from that time occur. In



COMPLETE TEXT OF Initiative Measure 651 (cont.)

such an event, all other provisions of the compact must remain in full force and effect.

PART IV. Regulation of Class III Gaming

(1). **Licensing of Key Employees and Primary Management Officials.** The tribe shall license, operate, and regulate all Class III gaming activities consistent with this compact, tribal law, and all other applicable federal law. The tribe shall enforce and administer the regulatory requirements that include but are not limited to the licensing of key employees and primary management officials of each Class III gaming activity or operation. The standards for licensing must be at least as restrictive as the standards required by the Indian Gaming Regulatory Act of 1988 and the regulations of the National Indian Gaming Commission for Key Employees and Primary Management Officials in effect for Class II gaming activities, as of March 1, 1995.

(2). **Accounting/Auditing.** Accounting records must be kept on a double entry system of accounting, maintaining detailed, supporting, subsidiary records. The tribe shall retain the following records for at least three years: (a) revenues, expenses, assets, liabilities and equity for each location at which Class III gaming is conducted; (b) daily cash transactions for each Class III game at each location at which gaming is conducted, including but not limited to transactions relating to each gaming table bank, game drop box, and gaming room bank; (c) all markers, IOUs, returned checks, hold checks or other similar credit instruments; (d) contracts, correspondence and other transaction documents relating to all vendors and contractors; (e) records of all tribal enforcement activities; (f) audits prepared by or on behalf of the tribe; and (g) personnel information on all Class III gaming employees or agents, including rotation sheets, hours worked, employee profiles and background checks. The tribe shall comply with all applicable provisions of the Bank Secrecy Act, P.L. 91-508, 31 U.S.C. §§ 5311-5314 (1970).

(3). **Washington State's Role in Regulation.**

(a) **Investigative Services to be Made Available.** The Washington State Gambling Commission shall conduct background investigations on primary management officials and key employees. Fees for the services shall not exceed the actual and reasonable costs incurred by the Commission for providing the service. The involvement of the state in conducting background investigations shall be voluntary; if the State of Washington chooses not to conduct the background investigations, or is otherwise unable to conduct the background investigations, the tribe may contract with other governments or private companies to provide the services. The tribe shall provide information on primary management officials and key employees sufficient to allow the state to conduct its own background investigation as is necessary to make an independent determination as to suitability of these individuals, consistent with the standards imposed on and by the tribe. If the state disputes the active status of a licensee, the state may pursue the remedies available in Part V of this compact.

(b) **State Inspection.** The state may inspect any aspect of the tribal gaming operations. The state presence, however, must not be conducted in a manner which interferes with the day-to-day operations of the gaming facility. A representative authorized in writing by the Governor of the state, or his designee, shall have the

right to inspect, in the accompaniment of a designated tribal representative, all tribal Class III gaming facilities and all tribal records related to Class III gaming, subject to the following conditions:

(i) For public areas, the representative may inspect at any time without prior notice;

(ii) For private areas not accessible to the public, the representative may inspect at any time during normal business hours, with twelve hours prior written notice; and

(iii) For inspection and copying of all tribal records relating to Class III gaming, the representative must give 48 hours, not including weekends, prior written notice to the Chairman of the tribe and specifically identify the records to be inspected and copied. However, the state shall pay for all reasonable costs related to the inspection and copying, and the tribe may prohibit the state from copying materials if the state is unable to maintain the confidentiality of the materials.

(c) **State Oversight & Consulting Services.** The state may provide additional oversight or consulting services by entering into a separate Memorandum of Agreement with the tribe providing for the services. In such an event, however, the fees charged by the state must not exceed fair and reasonable costs for providing the services.

PART V. DISPUTE RESOLUTION

(1). **Disputes Between Tribe and State** - Tribe or state may invoke the following dispute procedure if either believes the other government has failed to comply with a any requirement of the compact.

(a) **Notice.** The party asserting noncompliance must serve written notice to the Chairman of the tribe and the Governor of the state. The notice must identify the specific provision of the compact alleged to have been violated and must specify the factual basis for the alleged noncompliance.

(b) **Negotiated Resolution.** Within thirty (30) days of Notice under subsection (a) the tribe and state shall meet and make every good faith effort to resolve the dispute amicably, through direct negotiation. If the direct negotiation is futile or unsuccessful, the tribe and state agree to seek an independent mediator, the selection of which must be mutually agreed upon. Such mediator shall attempt to find a mutually acceptable resolution to the dispute.

(c) **Formal Mediation.** A controversy or claim arising out of or relating to this compact, or the breach of this compact, wherein negotiated resolution pursuant to subsection (1) (b) of this Part V is unsuccessful, the dispute must be submitted to formal mediation supervised and administrated by Judicial Arbitration and Mediation Services, through its Seattle office. The mediator must be selected by Judicial Arbitration and Mediation Services unless otherwise agreed to by tribe and state. The mediator shall have at a minimum, three years experience as a federal magistrate, federal district court or appellate judge, with specific experience involving Indian tribes as litigants. The mediation is not binding on the parties, unless prior to mediation, both parties agree, in writing, to be bound by the mediator's decision. The tribe and state shall each bear its own legal fees and expenses unless, in the opinion of the mediator, the position of one party is meritless, in which event the losing party shall reimburse the prevailing party for such fees and expenses. If the preferential use of Judicial Arbitration and Mediation Services violates any law, or is otherwise not available, the government seeking relief is deemed to have exhausted their remedies and may proceed to federal court as set forth in section (2) of this Part V.

(2). **Consent to Jurisdiction of Federal Court.** If significant



COMPLETE TEXT OF Initiative Measure 651 (cont.)

disputes arise from this compact that cannot be resolved by negotiated resolution or mediation, tribe and state agree to submit the issues to federal court for determination.

(a) **Tribe's Limited Waiver of Sovereign Immunity.** By this agreement, the tribe does not waive, limit, or modify its sovereign immunity from suit except as provided in this section. The tribe expressly waives in a limited manner its immunity from suit and consents to be sued in the United States District Court for either district of Washington, or in the District Court for the District of Columbia. The state must exhaust the remedies under this Part V before pursuing any action in federal court. This waiver is expressly limited to permit judgments or awards only to the extent of prospective equitable relief that the tribe comply with the court's interpretation of the compact.

(b) **State's Limited Waiver of Sovereign Immunity.** By this agreement, the state does not waive, limit, or modify its sovereign immunity from suit except as provided in this section. State expressly waives in a limited manner its immunity from suit, including any immunity protected by the Eleventh Amendment to the Constitution of the United States, and consents to be sued in the United States District Court for either district of Washington, or for the District Court for the District of Columbia. The tribe must exhaust the remedies under this Part V before pursuing any action in federal court.

PART VI. MISCELLANEOUS

(1). **Complete Agreement.** This compact is the entire agreement between the governments and supersedes all prior agreements, whether written or oral, with respect to the subject matter of this compact.

(2). **Severability.** In the event that any section or provision of this compact is held invalid by any court of competent jurisdiction, it is the intent of the parties that the remaining sections or provisions of this compact continue in full force and effect. If the Department of Interior, on behalf of the United States, determines that changes in this compact are necessary to be consistent with federal law, this Compact is deemed modified to the extent necessary to conform to federal law.

(3). **Jurisdiction.** Nothing in this compact may be interpreted to alter jurisdiction that the state might currently have on Indian lands of a Washington tribe. This compact may not be interpreted to preclude a subsequent retrocession agreement, crossdeputization agreement, or other intergovernmental agreement affecting jurisdiction.

PLEASE NOTE

In the preceding and following measures, all words in double parentheses with a line through them are in the State Law at the present time and are being taken out by the measure. All words underlined do not appear in the State Law as it is now written but will be put in if the measure is adopted.

To obtain a copy of the texts of these state measures in larger print, call the Secretary of State's toll-free hotline - 1-800-448-4881.



COMPLETE TEXT OF Referendum Measure 48

AN ACT Relating to regulation of private property; adding a new chapter to Title 64 RCW.

BE IT ENACTED BY THE PEOPLE OF THE STATE OF WASHINGTON:

NEW SECTION. Sec. 1. This act is intended to provide remedies to property owners in addition to any constitutional rights under the state and/or federal constitutions and is not intended to restrict or replace any constitutional rights.

NEW SECTION. Sec. 2. This act shall be known as the private property regulatory fairness act.

NEW SECTION. Sec. 3. A regulation of private property or restraint of land use by a governmental entity is prohibited unless a statement containing a full analysis of the total economic impact in private property of such regulation or restraint is prepared by the entity and made available to the public at least thirty days prior to adoption of the regulation or imposition of the restraint. Such statement shall identify the manner in which the proposed action will substantially advance the purpose of protecting public health and safety against identified public health or safety risks created by the use of private property, and analyze the economic impact of all reasonable alternatives to the regulation or restraint. Should the governmental entity choose to adopt a proposed regulation or restraint on the use private property, the governmental entity shall adopt the regulation or restraint that has the least possible impact on private property and still accomplishes the necessary public purpose.

NEW SECTION. Sec. 4. (1) A portion or parcel of private property shall be considered to have been taken for general public use when:

(a) a governmental entity regulates or imposes a restraint of land use on such portion or parcel of property for public benefit including wetlands, fish or wildlife habitat, buffer zone, or other public benefit designations; and

(b) no public nuisance will be created absent the regulation; and

(2) When private property is taken for general public use, the regulating agency or jurisdiction shall pay full compensation of reduction in value to the owner, or the use of the land by the owner may not be restricted because of the regulation or restraint. The jurisdiction may not require waiving this compensation as a condition of approval of use or another permit, nor as a condition for subdivision of land.

(3) Compensation must be paid to the owner of a private property within three months of the adoption of a regulation or restraint which results in a taking for general public use.

(4) A governmental entity may not deflate the value of property by suggesting or threatening a designation to avoid full compensation to the owner.

(5) A governmental entity that places restrictions on the use of public or private property which deprive a landowner of access to his or her property must also provide alternative access to the property at the governmental entity's expense, or purchase the inaccessible property.

(6) The assessor shall adjust property valuation for tax purposes and notify the owner of the new tax valuation, which must be reflected and identified in the next tax assessment notice.



COMPLETE TEXT OF Referendum Measure 48 (cont.)

(7) The state is responsible for the compensation liability of other governmental entities for any action which restricts the use of property when such action is mandated by state law or any state agency.

(8) Claims for compensation as a result of a taking of private property under this act must be brought within the time period specified in RCW 4.16.020.

NEW SECTION. Sec. 6. No governmental entity may require any private property owner to provide or pay for any studies, maps, plans, or reports used in decisions to consider restricting the use of private property for public use.

NEW SECTION. Sec. 7. Unless the context clearly requires otherwise, the definitions in this section apply throughout this chapter.

(1) "Full compensation" means the reduction in the fair market value of the portion or parcel of property taken for general public use which is attributable to the regulation or restraint. Such reduction shall be measured as of the date of adoption of the regulation or imposition of restraint on the use of private property.

(2) "Governmental entity" means Washington state, state agencies, agencies and commissions funded fully or partially by the state, counties, cities, and other political subdivisions.

(3) "Private property" means -

- (a) land;
- (b) any interest in land or improvements thereon;
- (c) any proprietary water right;
- (d) Any crops, forest products, or resources capable of being harvested or extracted that is owned by a non-governmental entity and is protected by either the Fifth or Fourteenth Amendments to the U.S. Constitution or the Washington State Constitution.

(4) "Restraint of land use" means any action, requirement, or restriction by a governmental entity, other than actions to prevent or abate public nuisances, that limits the use or development of private property.

(4) "Restraint of land use" means any action, requirement, or restriction by a governmental entity, other than actions to prevent or abate public nuisances, that limits the use or development of private property.

NEW SECTION. Sec. 8 This act may be enforced in Superior Court against any governmental entity which fails to comply with the provisions of this act by any owner of property subject to the jurisdiction of such entity. Any prevailing plaintiff is entitled to recover the costs of litigation, including reasonable attorney's fees.

NEW SECTION. Sec. 9. If any provision of this act or its application to any person or circumstance is held invalid, the remainder of the act or the application of the provision to other persons or circumstances is not affected.

NEW SECTION. Sec. 10. Sections 1 through 8 of this act shall constitute a new chapter in Title 64 RCW.



COMPLETE TEXT OF Referendum Bill 45

AN ACT Relating to the role of the state commission on fish and wildlife as recommended by the commission on fish and wildlife; amending RCW 77.04.040, 77.04.055, 77.04.080, 75.08.011, 75.08.025, 75.08.055, 75.08.058, 75.08.070, 75.08.080, 75.08.090, 75.08.110, 75.08.120, 75.08.274, 75.08.285, 75.08.295, 75.08.460, 75.40.020, 75.40.040, 75.40.060, 75.08.014, 75.08.040, 75.08.045, 75.12.010, 75.12.015, 75.20.110, 75.24.030, 75.24.100, 75.24.130, 75.25.095, 75.30.060, 75.50.010, 75.50.020, 75.50.030, 75.50.040, 75.50.050, 75.50.070, 75.50.110, 75.50.130, 75.52.050, and 77.16.135; reenacting and amending RCW 43.17.020 and 75.50.100; creating new sections; providing an effective date; and providing for submission of this act to a vote of the people.

BE IT ENACTED BY THE LEGISLATURE OF THE STATE OF WASHINGTON:

NEW SECTION. Sec. 1. The legislature supports the recommendations of the state fish and wildlife commission with regard to the commission's responsibilities in the merged department of fish and wildlife. It is the intent of the legislature that, beginning July 1, 1996, the commission assume regulatory authority for food fish and shellfish in addition to its existing authority for game fish and wildlife. It is also the intent of the legislature to provide to the commission the authority to review and approve department agreements, to review and approve the department's budget proposals, to adopt rules for the department, and to select commission staff and the director of the department.

The legislature finds that all fish, shellfish, and wildlife species should be managed under a single comprehensive set of goals, policies, and objectives, and that the decision-making authority should rest with the fish and wildlife commission. The commission acts in an open and deliberative process that encourages public involvement and increases public confidence in department decision-making.

Sec. 2. RCW 43.17.020 and 1993 sp.s. c 2 s 17, 1993 c 472 s 18, and 1993 c 280 s 19 are each reenacted and amended to read as follows:

There shall be a chief executive officer of each department to be known as: (1) The secretary of social and health services, (2) the director of ecology, (3) the director of labor and industries, (4) the director of agriculture, (5) the director of fish and wildlife, (6) the secretary of transportation, (7) the director of licensing, (8) the director of general administration, (9) the director of community, trade, and economic development, (10) the director of veterans affairs, (11) the director of revenue, (12) the director of retirement systems, (13) the secretary of corrections, and (14) the secretary of health, and (15) the director of financial institutions.

Such officers, except the secretary of transportation and the ~~director of fish and wildlife~~, shall be appointed by the governor, with the consent of the senate, and hold office at the pleasure of the governor. The secretary of transportation shall be appointed by the transportation commission as prescribed by RCW 47.01.041. The director of fish and wildlife shall be appointed by the fish and wildlife commission as prescribed by RCW 77.04.055.

Sec. 3. RCW 77.04.040 and 1993 sp.s. c 2 s 61 are each amended to read as follows:

Persons eligible for appointment as members of the commission



COMPLETE TEXT OF Referendum Bill 45 (cont.)

shall have general knowledge of the habits and distribution of ~~((game))~~ fish and wildlife and shall not hold another state, county, or municipal elective or appointive office. In making these appointments, the governor shall seek to maintain a balance reflecting all aspects of ~~((game))~~ fish and wildlife, including representation recommended by organized groups representing sportfishers, commercial fishers, hunters, private landowners, and environmentalists. Persons eligible for appointment as fish and wildlife commissioners shall ~~((not have a monetary interest in any private business that is involved with consumptive or nonconsumptive use of game fish or wildlife))~~ comply with the provisions of chapters 42.52 and 42.17 RCW.

Sec. 4. RCW 77.04.055 and 1993 sp.s. c 2 s 62 are each amended to read as follows:

(1) In establishing policies to preserve, protect, and perpetuate wildlife, ~~((game))~~ fish, and wildlife and ~~((game))~~ fish habitat, the commission shall meet annually with the governor to:

(a) Review and prescribe basic goals and objectives related to those policies; and

(b) Review the performance of the department in implementing ~~((game))~~ fish and wildlife policies.

The commission shall maximize ~~((game fish))~~ fishing, hunting, and outdoor recreational opportunities compatible with healthy and diverse fish and wildlife populations.

(2) The commission shall establish hunting, trapping, and fishing seasons and prescribe the time, place, manner, and methods that may be used to harvest or enjoy game fish and wildlife.

(3) The commission shall establish provisions regulating food fish and shellfish as provided in RCW 75.08.080.

(4) The commission shall have final approval authority for tribal, interstate, international, and any other department agreements relating to fish and wildlife.

(5) The commission shall adopt rules to implement the state's fish and wildlife laws.

(6) The commission shall have final approval authority for the department's budget proposals.

(7) The commission shall select its own staff and shall appoint the director of the department. The director and commission staff shall serve at the pleasure of the commission.

Sec. 5. RCW 77.04.080 and 1993 sp.s. c 2 s 64 are each amended to read as follows:

Persons eligible for appointment ~~((by the governor))~~ as director shall have practical knowledge of the habits and distribution of fish and wildlife. ~~((The governor shall seek recommendations from the commission on the qualifications, skills, and experience necessary to discharge the duties of the position. When considering and selecting the director, the governor shall consult with and be advised by the commission.))~~ The director shall receive the salary fixed by the governor under RCW 43.03.040.

The director is the ex officio secretary of the commission and shall attend its meetings and keep a record of its business.

The director may appoint and employ necessary departmental personnel. The director may delegate to department personnel the duties and powers necessary for efficient operation and administration of the department. ~~((The department shall provide staff for the commission.))~~

Sec. 6. RCW 75.08.011 and 1994 c 255 s 2 are each amended to read as follows:

As used in this title or rules of the director, unless the context clearly requires otherwise:

(1) "Commission" means the fish and wildlife commission.

(2) "Director" means the director of fish and wildlife.

~~((2))~~ (3) "Department" means the department of fish and wildlife.

~~((3))~~ (4) "Person" means an individual or a public or private entity or organization. The term "person" includes local, state, and federal government agencies, and all business organizations, including corporations and partnerships.

~~((4))~~ (5) "Fisheries patrol officer" means a person appointed and commissioned by the ~~((director))~~ commission, with authority to enforce this title, rules of the director, and other statutes as prescribed by the legislature. Fisheries patrol officers are peace officers.

~~((5))~~ (6) "Ex officio fisheries patrol officer" means a commissioned officer of a municipal, county, state, or federal agency having as its primary function the enforcement of criminal laws in general, while the officer is in the appropriate jurisdiction. The term "ex officio fisheries patrol officer" also includes wildlife agents, special agents of the national marine fisheries service, United States fish and wildlife special agents, state parks commissioned officers, department of natural resources enforcement officers, and United States forest service officers, while the agents and officers are within their respective jurisdictions.

~~((6))~~ (7) "To fish," "to harvest," and "to take" and their derivatives mean an effort to kill, injure, harass, or catch food fish or shellfish.

~~((7))~~ (8) "State waters" means all marine waters and fresh waters within ordinary high water lines and within the territorial boundaries of the state.

~~((8))~~ (9) "Offshore waters" means marine waters of the Pacific Ocean outside the territorial boundaries of the state, including the marine waters of other states and countries.

~~((9))~~ (10) "Concurrent waters of the Columbia river" means those waters of the Columbia river that coincide with the Washington-Oregon state boundary.

~~((10))~~ (11) "Resident" means a person who has maintained a permanent place of abode within the state for at least ninety days immediately preceding an application for a license, has established by formal evidence an intent to continue residing within the state, and who is not licensed to hunt or fish as a resident in another state.

~~((11))~~ (12) "Nonresident" means a person who has not fulfilled the qualifications of a resident.

~~((12))~~ (13) "Food fish" means those species of the classes Osteichthyes, Agnatha, and Chondrichthyes that have been classified and that shall not be fished for except as authorized by rule of the ~~((director))~~ commission. The term "food fish" includes all stages of development and the bodily parts of food fish species.

~~((13))~~ (14) "Shellfish" means those species of marine and freshwater invertebrates that have been classified and that shall not be taken except as authorized by rule of the ~~((director))~~ commission. The term "shellfish" includes all stages of development and the bodily parts of shellfish species.

~~((14))~~ (15) "Salmon" means all species of the genus *Oncorhynchus*, except those classified as game fish in Title 77 RCW, and includes:

Scientific Name	Common Name
<i>Oncorhynchus tshawytscha</i>	Chinook salmon
<i>Oncorhynchus kisutch</i>	Coho salmon
<i>Oncorhynchus keta</i>	Chum salmon
<i>Oncorhynchus gorbuscha</i>	Pink salmon
<i>Oncorhynchus nerka</i>	Sockeye salmon



COMPLETE TEXT OF Referendum Bill 45 (cont.)

((15)) (16) "Commercial" means related to or connected with buying, selling, or bartering. Fishing for food fish or shellfish with gear unlawful for fishing for personal use, or possessing food fish or shellfish in excess of the limits permitted for personal use are commercial activities.

((16)) (17) "To process" and its derivatives mean preparing or preserving food fish or shellfish.

((17)) (18) "Personal use" means for the private use of the individual taking the food fish or shellfish and not for sale or barter.

((18)) (19) "Angling gear" means a line attached to a rod and reel capable of being held in hand while landing the fish or a hand-held line operated without rod or reel.

((19)) (20) "Open season" means those times, manners of taking, and places or waters established by rule of the ((director)) commission for the lawful fishing, taking, or possession of food fish or shellfish. "Open season" includes the first and last days of the established time.

((20)) (21) "Fishery" means the taking of one or more particular species of food fish or shellfish with particular gear in a particular geographical area.

((21)) (22) "Limited-entry license" means a license subject to a license limitation program established in chapter 75.30 RCW.

((22)) (23) "Seaweed" means marine aquatic plant species that are dependent upon the marine aquatic or tidal environment, and exist in either an attached or free floating form, and includes but is not limited to marine aquatic plants in the classes Chlorophyta, Phaeophyta, and Rhodophyta.

Sec. 7. RCW 75.08.025 and 1983 1st ex.s. c 46 s 8 are each amended to read as follows:

The ((director)) commission may negotiate agreements with the United States department of defense to coordinate fishing in state waters over which the department of defense has assumed control.

Sec. 8. RCW 75.08.055 and 1993 sp.s. c 2 s 23 are each amended to read as follows:

(1) The ((director)) commission may enter into agreements with and receive funds from the United States for the construction, maintenance, and operation of fish cultural stations, laboratories, and devices in the Columbia River basin for improvement of feeding and spawning conditions for fish, for the protection of migratory fish from irrigation projects and for facilitating free migration of fish over obstructions.

(2) The ((director)) commission and the department may acquire by gift, purchase, lease, easement, or condemnation the use of lands where the construction or improvement is to be carried on by the United States.

Sec. 9. RCW 75.08.058 and 1993 sp.s. c 2 s 99 are each amended to read as follows:

The ((department)) commission may adopt rules pertaining to harvest of fish and wildlife in the federal exclusive economic zone by vessels or individuals registered or licensed under the laws of this state.

Sec. 10. RCW 75.08.070 and 1989 c 130 s 1 are each amended to read as follows:

Consistent with federal law, the ((director's)) commission's authority extends to all areas and waters within the territorial boundaries of

the state, to the offshore waters, and to the concurrent waters of the Columbia river.

Consistent with federal law, the ((director's)) commission's authority extends to fishing in offshore waters by residents of this state.

The ((director)) commission may adopt rules consistent with the regulations adopted by the United States department of commerce for the offshore waters. The ((director)) commission may adopt rules consistent with the recommendations or regulations of the Pacific marine fisheries commission, Columbia river compact, the Pacific salmon commission as provided in chapter 75.40 RCW, or the international Pacific halibut commission.

Sec. 11. RCW 75.08.080 and 1993 c 117 s 1 are each amended to read as follows:

(1) The ((director)) commission may adopt, amend, or repeal rules as follows:

(a) Specifying the times when the taking of food fish or shellfish is lawful or unlawful.

(b) Specifying the areas and waters in which the taking and possession of food fish or shellfish is lawful or unlawful.

(c) Specifying and defining the gear, appliances, or other equipment and methods that may be used to take food fish or shellfish, and specifying the times, places, and manner in which the equipment may be used or possessed.

(d) Regulating the possession, disposal, landing, and sale of food fish or shellfish within the state, whether acquired within or without the state.

(e) Regulating the prevention and suppression of diseases and pests affecting food fish or shellfish.

(f) Regulating the size, sex, species, and quantities of food fish or shellfish that may be taken, possessed, sold, or disposed of.

(g) Specifying the statistical and biological reports required from fishermen, dealers, boathouses, or processors of food fish or shellfish.

(h) Classifying species of marine and freshwater life as food fish or shellfish.

(i) Classifying the species of food fish and shellfish that may be used for purposes other than human consumption.

(j) Other rules necessary to carry out this title and the purposes and duties of the department.

(2) Subsections (1) (a), (b), (c), (d), and (f) of this section do not apply to private tideland owners and lessees and the immediate family members of the owners or lessees of state tidelands, when they take or possess oysters, clams, cockles, borers, or mussels, excluding razor clams, produced on their own private tidelands or their leased state tidelands for personal use.

"Immediate family member" for the purposes of this section means a spouse, brother, sister, grandparent, parent, child, or grandchild.

(3) Except for subsection (1) (g) of this section, this section does not apply to private sector cultured aquatic products as defined in RCW 15.85.020. Subsection (1) (g) of this section does apply to such products.

Sec. 12. RCW 75.08.090 and 1983 1st ex.s. c 46 s 16 are each amended to read as follows:

(1) Rules of the ((director)) commission shall be adopted by the ((director)) commission or a designee in accordance with chapter 34.05 RCW.

(2) Rules of the ((director)) commission shall be admitted as evidence in the courts of the state when accompanied by an affidavit from the ((director)) commission or a designee certifying that the rule has been lawfully adopted and the affidavit is prima facie evidence of the adoption of the rule.

(3) The ((director)) commission may designate department employees to act on the ((director's)) commission's behalf in the



COMPLETE TEXT OF Referendum Bill 45 (cont.)

adoption and certification of rules.

Sec. 13. RCW 75.08.110 and 1983 1st ex.s. c 46 s 17 are each amended to read as follows:

Provisions of this title or rules of the ((director)) commission shall not be printed in a pamphlet unless the pamphlet is clearly marked as an unofficial version. This section does not apply to printings approved by the ((director)) commission.

Sec. 14. RCW 75.08.120 and 1983 1st ex.s. c 46 s 18 are each amended to read as follows:

The ((director)) commission may designate the boundaries of fishing areas by driving piling or by establishing monuments or by description of landmarks or section lines and directional headings.

Sec. 15. RCW 75.08.274 and 1983 1st ex.s. c 46 s 28 are each amended to read as follows:

Except by permit of the ((director)) commission, it is unlawful to take food fish or shellfish for propagation or scientific purposes within state waters.

Sec. 16. RCW 75.08.285 and 1983 1st ex.s. c 46 s 29 are each amended to read as follows:

The ((director)) commission may prohibit the introduction, transportation or transplanting of food fish, shellfish, organisms, material, or other equipment which in the ((director's)) commission's judgment may transmit any disease or pests affecting food fish or shellfish.

Sec. 17. RCW 75.08.295 and 1983 1st ex.s. c 46 s 30 are each amended to read as follows:

Except by permit of the ((director)) commission, it is unlawful to release, plant, or place food fish or shellfish in state waters.

Sec. 18. RCW 75.08.460 and 1990 c 91 s 2 are each amended to read as follows:

The ((director)) commission shall report to the governor and the appropriate legislative committees regarding its progress on the recreational fishery enhancement plan giving the following minimum information:

(1) By July 1, 1990, and by July 1st each succeeding year a report shall include:

- (a) Progress on all programs within the plan that are referred to as already underway; and
- (b) Specific anticipated needs for additional FTE's, additional capital funds or other needed resources, including whether or not current budgetary dollars are sufficient.

(2) By November 1, 1990, and by November 1st each succeeding year a report shall provide the many specificities omitted from the recreational fishery enhancement plan. They include but are not limited to the following:

- (a) The name of the person assigned the responsibility and accountability for over-all management of the recreational fishery enhancement plan.
- (b) The name of the person responsible and accountable for management of each regional program.
- (c) The anticipated yearly costs related to each regional program.
- (d) The specific dates relative to attainment of the recreational fishery enhancement plan goals, including a time-line program by region.

(e) Criteria used for measurement of the successful attainment of the recreational fishery enhancement plan.

Sec. 19. RCW 75.40.020 and 1983 1st ex.s. c 46 s 150 are each amended to read as follows:

The ((director)) commission may give to the state of Oregon such consent and approbation of the state of Washington as is necessary under the compact set out in RCW 75.40.010. For the purposes of RCW 75.40.010, the states of Washington and Oregon have concurrent jurisdiction in the concurrent waters of the Columbia river as defined in RCW 75.08.011.

Sec. 20. RCW 75.40.040 and 1983 1st ex.s. c 46 s 152 are each amended to read as follows:

((The director)) A member selected by or a designee of the fish and wildlife commission, ex officio, and two appointees of the governor representing the fishing industry shall act as the representatives of this state on the Pacific Marine Fisheries Commission. The appointees of the governor are subject to confirmation by the state senate.

Sec. 21. RCW 75.40.060 and 1989 c 130 s 2 are each amended to read as follows:

The ((director)) commission may adopt and enforce the provisions of the treaty between the government of the United States and the government of Canada concerning Pacific salmon, treaty document number 99-2, entered into force March 18, 1985, at Quebec City, Canada, and the regulations of the commission adopted under authority of the treaty.

Sec. 22. RCW 75.08.014 and 1993 sp.s. c 2 s 21 are each amended to read as follows:

The director shall supervise the administration and operation of the department and perform the duties prescribed by law and delegated by the commission. The director may appoint and employ necessary personnel. The director may delegate, in writing, to department personnel the duties and powers necessary for efficient operation and administration of the department.

Only persons having general knowledge of the fisheries and wildlife resources and of the commercial and recreational fishing industry in this state are eligible for appointment as director. The director shall not have a financial interest in the fishing industry or a directly related industry.

Sec. 23. RCW 75.08.040 and 1983 1st ex.s. c 46 s 9 are each amended to read as follows:

The ((director)) commission may acquire by gift, easement, purchase, lease, or condemnation lands, water rights, and rights of way, and construct and maintain necessary facilities for purposes consistent with this title.

The ((director)) commission may sell, lease, convey, or grant concessions upon real or personal property under the control of the department.

Sec. 24. RCW 75.08.045 and 1983 1st ex.s. c 46 s 11 are each amended to read as follows:

The ((director)) commission may accept money or real property from persons under conditions requiring the use of the property or money for the protection, rehabilitation, preservation, or conservation of the state food fish and shellfish resources, or in settlement of claims for damages to food fish and shellfish resources. The ((director)) commission shall only accept real property useful for the protection, rehabilitation, preservation, or conservation of these fisheries resources.

Sec. 25. RCW 75.12.010 and 1983 1st ex.s. c 46 s 46 are each



COMPLETE TEXT OF Referendum Bill 45 (cont.)

amended to read as follows:

(1) Except as provided in this section, it is unlawful to fish commercially for salmon within the waters described in subsection (2) of this section.

(2) All waters east and south of a line commencing at a concrete monument on Angeles Point in Clallam county near the mouth of the Elwha River on which is inscribed "Angeles Point Monument" (latitude 48° 9' 3" north, longitude 123° 33' 01" west of Greenwich Meridian); thence running east on a line 81° 30' true across the flashlight and bell buoy off Partridge Point and thence continued to longitude 122° 40' west; thence north to the southerly shore of Sinclair Island; thence along the southerly shore of the island to the most easterly point of the island; thence 46° true to Carter Point, the most southerly point of Lummi Island; thence northwesterly along the westerly shore line of Lummi Island to where the shore line intersects line of longitude 122° 40' west; thence north to the mainland, including: The southerly portion of Hale Passage, Bellingham Bay, Padilla Bay, Fidalgo Bay, Guemes Channel, Skagit Bay, Similk Bay, Saratoga Passage, Holmes Harbor, Possession Sound, Admiralty Inlet, Hood Canal, Puget Sound, and their inlets, passages, waters, waterways, and tributaries.

(3) The ((director)) commission may authorize commercial fishing for sockeye salmon within the waters described in subsection (2) of this section during the period June 10 to July 25 and for other salmon from the second Monday of September through November 30, except during the hours between 4:00 p.m. of Friday and 4:00 p.m. of the following Sunday.

(4) The ((director)) commission may authorize commercial fishing for salmon with gill net gear prior to the second Monday in September within the waters of Hale Passage, Bellingham Bay, Samish Bay, Padilla Bay, Fidalgo Bay, Guemes Channel, Skagit Bay, and Similk Bay, to wit: Those waters northerly and easterly of a line commencing at Stanwood, thence along the south shore of Skagit Bay to Rocky Point on Camano Island; thence northerly to Polnell Point on Whidbey Island.

(5) Whenever the ((director)) commission determines that a stock or run of salmon cannot be harvested in the usual manner, and that the stock or run of salmon may be in danger of being wasted and surplus to natural or artificial spawning requirements, the ((director)) commission may authorize units of gill net and purse seine gear in any number or equivalents, by time and area, to fully utilize the harvestable portions of these salmon runs for the economic well being of the citizens of this state. Gill net and purse seine gear other than emergency and test gear authorized by the director shall not be used in Lake Washington.

(6) The ((director)) commission may authorize commercial fishing for pink salmon in each odd-numbered year from August 1 through September 1 in the waters lying inside of a line commencing at the most easterly point of Dungeness Spit and thence projected to Point Partridge on Whidbey Island and a line commencing at Olele Point and thence projected easterly to Bush Point on Whidbey Island.

Sec. 26. RCW 75.12.015 and 1983 1st ex.s. c 46 s 48 are each amended to read as follows:

Except as provided in this section, it is unlawful to fish commercially for chinook or coho salmon in the Pacific Ocean and the Straits of Juan de Fuca.

(1) The ((director)) commission may authorize commercial fishing for coho salmon from June 16 through October 31.

(2) The ((director)) commission may authorize commercial fishing for chinook salmon from March 15 through October 31.

Sec. 27. RCW 75.20.110 and 1993 sp.s. c 2 s 36 are each amended to read as follows:

(1) Except for the north fork of the Lewis river and the White Salmon river, all streams and rivers tributary to the Columbia river downstream from McNary dam are established as an anadromous fish sanctuary. This sanctuary is created to preserve and develop the food fish and game fish resources in these streams and rivers and to protect them against undue industrial encroachment.

(2) Within the sanctuary area:

(a) It is unlawful to construct a dam greater than twenty-five feet high within the migration range of anadromous fish as determined by the ((director)) commission.

(b) Except by order of the ((director)) commission, it is unlawful to divert water from rivers and streams in quantities that will reduce the respective stream flow below the annual average low flow, based upon data published in United States geological survey reports.

(3) The ((director)) commission may acquire and abate a dam or other obstruction, or acquire any water right vested on a sanctuary stream or river, which is in conflict with the provisions of subsection (2) of this section.

(4) Subsection (2) (a) of this section does not apply to the sediment retention structure to be built on the North Fork Toutle river by the United States army corps of engineers.

Sec. 28. RCW 75.24.030 and 1983 1st ex.s. c 46 s 79 are each amended to read as follows:

Only upon recommendation of the ((director)) commission may the state oyster reserves be sold, leased, or otherwise disposed of by the department of natural resources.

Sec. 29. RCW 75.24.100 and 1993 c 340 s 51 are each amended to read as follows:

(1) It is unlawful to take geoduck clams for commercial purposes outside the harvest area designated in a current department of natural resources geoduck harvesting agreement issued under RCW 79.96.080. It is unlawful to commercially harvest geoduck clams from bottoms that are shallower than eighteen feet below mean lower low water (0.0. ft.), or that lie in an area bounded by the line of ordinary high tide (mean high tide) and a line two hundred yards seaward from and parallel to the line of ordinary high tide. This section does not apply to the harvest of private sector cultured aquatic products as defined in RCW 15.85.020.

(2) Commercial geoduck harvesting shall be done with a hand-held, manually operated water jet or suction device guided and controlled from under water by a diver. Periodically, the ((director)) commission shall determine the effect of each type or unit of gear upon the geoduck population or the substrate they inhabit. The ((director)) commission may require modification of the gear or stop its use if it is being operated in a wasteful or destructive manner or if its operation may cause permanent damage to the bottom or adjacent shellfish populations.

Sec. 30. RCW 75.24.130 and 1983 1st ex.s. c 46 s 89 are each amended to read as follows:

The ((director)) commission may examine the clam, mussel, and oyster beds located on aquatic lands belonging to the state and request the commissioner of public lands to withdraw these lands from sale and lease for the purpose of establishing reserves or public beaches. The ((director)) commission shall conserve, protect, and develop these reserves and the oyster, shrimp, clam, and mussel beds on state lands.

Sec. 31. RCW 75.25.095 and 1990 c 34 s 2 are each amended



COMPLETE TEXT OF Referendum Bill 45 (cont.)

to read as follows:

~~((Notwithstanding RCW 75.25.090;))~~ The ~~((director))~~ commission may adopt rules designating times and places for the purposes of family fishing days when a recreational fishing license is not required to fish for food fish or shellfish. All other applicable laws and rules shall remain in effect.

Sec. 32. RCW 75.30.060 and 1983 1st ex.s. c 46 s 139 are each amended to read as follows:

A person aggrieved by a decision of the department under this chapter may request administrative review under the informal procedure established by this section.

In an informal hearing before a review board, the rules of evidence do not apply. A record of the proceeding shall be kept as provided by chapter 34.05 RCW. After hearing the case the review board shall notify in writing the ~~((director))~~ commission and the initiating party whether the review board agrees or disagrees with the department's decision and the reasons for the board's findings. Upon receipt of the board's findings the ~~((director))~~ commission may order such relief as the ~~((director))~~ commission deems appropriate under the circumstances.

Nothing in this section: (1) Impairs an aggrieved person's right to proceed under chapter 34.05 RCW; or (2) imposes a liability on members of a review board for their actions under this section.

Sec. 33. RCW 75.50.010 and 1993 sp.s. c 2 s 45 are each amended to read as follows:

Currently, many of the salmon stocks of Washington state are critically reduced from their sustainable level. The best interests of all fishing groups and the citizens as a whole are served by a stable and productive salmon resource. Immediate action is needed to reverse the severe decline of the resource and to insure its very survival. The legislature finds a state of emergency exists and that immediate action is required to restore its fishery.

Disagreement and strife have dominated the salmon fisheries for many years. Conflicts among the various fishing interests have only served to erode the resource. It is time for the state of Washington to make a major commitment to increasing productivity of the resource and to move forward with an effective rehabilitation and enhancement program. The ~~((department))~~ commission is directed to dedicate its efforts and the efforts of the department to seek resolution to the many conflicts that involve the resource.

Success of the enhancement program can only occur if projects efficiently produce salmon or restore habitat. The expectation of the program is to optimize the efficient use of funding on projects that will increase artificially and naturally produced salmon, restore and improve habitat, or identify ways to increase the survival of salmon. The full utilization of state resources and cooperative efforts with interested groups are essential to the success of the program.

Sec. 34. RCW 75.50.020 and 1985 c 458 s 2 are each amended to read as follows:

(1) The ~~((director))~~ commission shall develop long-term regional policy statements regarding the salmon fishery resources before December 1, 1985. The ~~((director))~~ commission shall consider the following in formulating and updating regional policy statements:

- (a) Existing resource needs;
- (b) Potential for creation of new resources;
- (c) Successful existing programs, both within and outside the

state;

- (d) Balanced utilization of natural and hatchery production;
- (e) Desires of the fishing interest;
- (f) Need for additional data or research;
- (g) Federal court orders; and
- (h) Salmon advisory council recommendations.

(2) The ~~((director))~~ commission shall review and update each policy statement at least once each year.

Sec. 35. RCW 75.50.030 and 1985 c 458 s 3 are each amended to read as follows:

(1) The ~~((director))~~ commission shall develop a detailed salmon enhancement plan with proposed enhancement projects. The plan and the regional policy statements shall be submitted to the secretary of the senate and chief clerk of the house of representatives for legislative distribution by June 30, 1986. The enhancement plan and regional policy statements shall be provided by June 30, 1986, to the natural resources committees of the house of representatives and the senate. The ~~((director))~~ commission shall provide a maximum opportunity for the public to participate in the development of the salmon enhancement plan. To insure full participation by all interested parties, the ~~((director))~~ commission shall solicit and consider enhancement project proposals from Indian tribes, sports fishermen, commercial fishermen, private aquaculturists, and other interested groups or individuals for potential inclusion in the salmon enhancement plan. Joint or cooperative enhancement projects shall be considered for funding.

(2) The following criteria shall be used by the ~~((director))~~ commission in formulating the project proposals:

- (a) Compatibility with the long-term policy statement;
- (b) Benefit/cost analysis;
- (c) Needs of all fishing interests;
- (d) Compatibility with regional plans, including harvest management plans;
- (e) Likely increase in resource productivity;
- (f) Direct applicability of any research;
- (g) Salmon advisory council recommendations;
- (h) Compatibility with federal court orders;
- (i) Coordination with the salmon and steelhead advisory commission program;
- (j) Economic impact to the state;
- (k) Technical feasibility; and
- (l) Preservation of native salmon runs.

(3) The ~~((director))~~ commission shall not approve projects that serve as replacement funding for projects that exist prior to May 21, 1985, unless no other sources of funds are available.

(4) The ~~((director))~~ commission shall prioritize various projects and establish a recommended implementation time schedule.

Sec. 36. RCW 75.50.040 and 1985 c 458 s 4 are each amended to read as follows:

Upon approval by the legislature of funds for its implementation, the ~~((director))~~ commission shall monitor the progress of projects detailed in the salmon enhancement plan.

The ~~((director))~~ commission shall be responsible for establishing criteria which shall be used to measure the success of each project in the salmon enhancement plan.

Sec. 37. RCW 75.50.050 and 1987 c 505 s 72 are each amended to read as follows:

The ~~((director))~~ commission shall report to the legislature on or before October 30th of each year ~~((through 1994))~~ on the progress and performance of each project. The report shall contain an analysis of the successes and failures of the program to enable optimum development of the program. The report shall include estimates of funding levels necessary to operate the projects in



COMPLETE TEXT OF Referendum Bill 45 (cont.)

future years.

The ((director)) commission shall submit the reports and any additional recommendations to the chairs of the committees on ways and means and the committees on natural resources of the senate and house of representatives.

Sec. 38. RCW 75.50.070 and 1993 sp.s. c 2 s 46 are each amended to read as follows:

The legislature finds that it is in the best interest of the salmon resource of the state to encourage the development of regional fisheries enhancement groups. The accomplishments of one existing group, the Grays Harbor fisheries enhancement task force, have been widely recognized as being exemplary. The legislature recognizes the potential benefits to the state that would occur if each region of the state had a similar group of dedicated citizens working to enhance the salmon resource.

The legislature authorizes the formation of regional fisheries enhancement groups. These groups shall be eligible for state financial support and shall be actively supported by the commission and the department. The regional groups shall be operated on a strictly nonprofit basis, and shall seek to maximize the efforts of volunteer and private donations to improve the salmon resource for all citizens of the state.

Sec. 39. RCW 75.50.100 and 1993 sp.s. c 17 s 11 and 1993 c 340 s 53 are each reenacted and amended to read as follows:

The dedicated regional fisheries enhancement group account is created in the custody of the state treasurer. Only the ((director)) commission or the ((director's)) commission's designee may authorize expenditures from the account. The account is subject to allotment procedures under chapter 43.88 RCW, but no appropriation is required for expenditures.

A surcharge of one dollar shall be collected on each recreational personal use food fish license sold in the state. A surcharge of one hundred dollars shall be collected on each commercial salmon fishery license, each salmon delivery license, and each salmon charter license sold in the state. The department shall study methods for collecting and making available, an annual list, including names and addresses, of all persons who obtain recreational and commercial salmon fishing licenses. This list may be used to assist formation of the regional fisheries enhancement groups and allow the broadest participation of license holders in enhancement efforts. The results of the study shall be reported to the house of representatives fisheries and wildlife committee and the senate environment and natural resources committee by October 1, 1990. All receipts shall be placed in the regional fisheries enhancement group account and shall be used exclusively for regional fisheries enhancement group projects for the purposes of RCW 75.50.110. Funds from the regional fisheries enhancement group account shall not serve as replacement funding for department operated salmon projects that exist on January 1, 1991.

All revenue from the department's sale of salmon carcasses and eggs that return to group facilities shall be deposited in the regional fisheries enhancement group account for use by the regional fisheries enhancement group that produced the surplus. The ((director)) commission shall adopt rules to implement this section pursuant to chapter 34.05 RCW.

Sec. 40. RCW 75.50.110 and 1990 c 58 s 4 are each amended

to read as follows:

A regional fisheries enhancement group advisory board is established to make recommendations to the ((director)) commission. The advisory board shall make recommendations regarding regional enhancement group rearing project proposals and funding of those proposals. The members shall be appointed by the ((director)) commission and consist of two commercial fishing representatives, two recreational fishing representatives, and three at-large positions. The advisory board membership shall include two members serving ex officio to be nominated, one through the Northwest Indian fisheries commission, and one through the Columbia river inter-tribal fish commission.

The department may use account funds to provide agency assistance to the groups. The level of account funds used by the department shall be determined by the ((director)) commission after review and recommendation by the regional fisheries enhancement group advisory board and shall not exceed twenty percent of annual contributions to the account.

Sec. 41. RCW 75.50.130 and 1993 sp.s. c 2 s 48 are each amended to read as follows:

The ((director)) commission shall prepare a salmon recovery plan for the Skagit river. The plan shall include strategies for employing displaced timber workers to conduct salmon restoration and other tasks identified in the plan. The plan shall incorporate the best available technology in order to achieve maximum restoration of depressed salmon stocks. The plan must encourage the restoration of natural spawning areas and natural rearing of salmon but must not preclude the development of an active hatchery program.

Sec. 42. RCW 75.52.050 and 1984 c 72 s 5 are each amended to read as follows:

The ((director of each department)) commission shall establish by rule:

(1) The procedure for entering a cooperative agreement and the application forms for a permit to release fish or wildlife required by RCW 75.08.295 or 77.16.150. The procedure shall indicate the information required from the volunteer group as well as the process of review by the department. The process of review shall include the means to coordinate with other agencies and Indian tribes when appropriate and to coordinate the review of any necessary hydraulic permit approval applications.

(2) The procedure for providing within forty-five days of receipt of a proposal a written response to the volunteer group indicating the date by which an acceptance or rejection of the proposal can be expected, the reason why the date was selected, and a written summary of the process of review. The response should also include any suggested modifications to the proposal which would increase its likelihood of approval and the date by which such modified proposal could be expected to be accepted. If the proposal is rejected, the department must provide in writing the reasons for rejection. The volunteer group may request the director or the director's designee to review information provided in the response.

(3) The priority of the uses to which eggs, seed, juveniles, or brood stock are put. Use by cooperative projects shall be second in priority only to the needs of programs of the department or of other public agencies within the territorial boundaries of the state. Sales of eggs, seed, juveniles, or brood stock have a lower priority than use for cooperative projects.

(4) The procedure for notice in writing to a volunteer group of cause to revoke the agreement for the project and the procedure for revocation. Revocation shall be documented in writing to the volunteer group. Cause for revocation may include: (a) The unavailability of adequate biological or financial resources; (b) the development of unacceptable biological or resource management conflicts; or (c) a violation of agreement provisions. Notice



COMPLETE TEXT OF Referendum Bill 45 (cont.)

of cause to revoke for a violation of agreement provisions may specify a reasonable period of time within which the volunteer group must comply with any violated provisions of the agreement.

(5) An appropriate method of distributing among volunteer groups fish, bird, or animal food or other supplies available for the program.

Sec. 43. RCW 77.16.135 and 1993 sp.s. c 2 s 74 are each amended to read as follows:

(1) The ~~((director))~~ commission shall revoke all licenses and privileges extended under Title 77 RCW of a person convicted of assault on a state wildlife agent or other law enforcement officer provided that:

(a) The wildlife agent or other law enforcement officer was on duty at the time of the assault; and

(b) The wildlife agent or other law enforcement officer was enforcing the provisions of Title 77 RCW.

(2) For the purposes of this section, the definition of assault includes:

- (a) RCW 9A.32.030; murder in the first degree;
- (b) RCW 9A.32.050; murder in the second degree;
- (c) RCW 9A.32.060; manslaughter in the first degree;
- (d) RCW 9A.32.070; manslaughter in the second degree;
- (e) RCW 9A.36.011; assault in the first degree;
- (f) RCW 9A.36.021; assault in the second degree; and
- (g) RCW 9A.36.031; assault in the third degree.

(3) For the purposes of this section, a conviction includes:

- (a) A determination of guilt by the court;
- (b) The entering of a guilty plea to the charge or charges by the accused;
- (c) A forfeiture of bail or a vacation of bail posted to the court; or
- (d) The imposition of a deferred or suspended sentence by the court.

(4) No license described under Title 77 RCW shall be reissued to a person violating this section for a minimum of ten years, at which time a person may petition the director for a reinstatement of his or her license or licenses. The ten-year period shall be tolled during any time the convicted person is incarcerated in any state or local correctional or penal institution, in community supervision, or home detention for an offense under this section. Upon review by the director, and if all provisions of the court that imposed sentencing have been completed, the director may reinstate in whole or in part the licenses and privileges under Title 77 RCW.

NEW SECTION. Sec. 44. By July 1, 1996, the fish and wildlife commission shall submit to the committees on natural resources of the house of representatives and the senate a report identifying other statutory changes necessary for implementation of the commission's recommendations regarding its responsibilities in the department of fish and wildlife.

NEW SECTION. Sec. 45. Sections 2 through 43 of this act shall take effect July 1, 1996.

NEW SECTION. Sec. 46. This act shall be submitted to the people for their adoption and ratification, or rejection, at the next succeeding general election to be held in this state, in accordance with Article II, section 1 of the state Constitution, as amended, and the laws adopted to facilitate the operation thereof.



COMPLETE TEXT OF Substitute Senate Joint Resolution 8210

BE IT RESOLVED, BY THE SENATE AND HOUSE OF REPRESENTATIVES OF THE STATE OF WASHINGTON, IN LEGISLATIVE SESSION ASSEMBLED:

THAT, At the next general election to be held in this state there shall be submitted to the qualified voters of the state for their approval and ratification, or rejection, an amendment to Article IV, section 3 of the Constitution of the state of Washington to read as follows:

Article IV, section 3. The judges of the supreme court shall be elected by the qualified electors of the state at large at the general state election at the times and places at which state officers are elected, unless some other time be provided by the legislature. The first election of judges of the supreme court shall be at the election which shall be held upon the adoption of this Constitution and the judges elected thereat shall be classified by lot, so that two shall hold their office for the term of three years, two for the term of five years, and one for the term of seven years. The lot shall be drawn by the judges who shall for that purpose assemble at the seat of government, and they shall cause the result thereof to be certified to the secretary of state, and filed in his office. The ~~((judge having the shortest term to serve not holding his office by appointment or election to fill a vacancy, shall be))~~ supreme court shall select a chief justice from its own membership to serve for a four-year term at the pleasure of a majority of the court as prescribed by supreme court rule. The chief justice((-and)) shall preside at all sessions of the supreme court((-and in case there shall be two judges having in like manner the same short term, the other judges of the supreme court shall determine which of them shall be chief justice)). In case of the absence of the chief justice, the ~~((judge having in like manner the shortest or next shortest term to serve shall preside))~~ majority of the remaining court shall select one of their members to serve as acting chief justice. After the first election the terms of judges elected shall be six years from and after the second Monday in January next succeeding their election. If a vacancy occur in the office of a judge of the supreme court the governor shall only appoint a person to ensure the number of judges as specified by the legislature, to hold the office until the election and qualification of a judge to fill the vacancy, which election shall take place at the next succeeding general election, and the judge so elected shall hold the office for the remainder of the unexpired term. The term of office of the judges of the supreme court, first elected, shall commence as soon as the state shall have been admitted into the Union, and continue for the term herein provided, and until their successors are elected and qualified. The sessions of the supreme court shall be held at the seat of government until otherwise provided by law.

BE IT FURTHER RESOLVED, That the secretary of state shall cause notice of the foregoing constitutional amendment to be published at least four times during the four weeks next preceding the election in every legal newspaper in the state.

THE 1996 WASHINGTON PRESIDENTIAL PRIMARY

Washington's Presidential Primary, which gives citizens the opportunity to cast a vote for the nomination of presidential candidates, will be held March 26, 1996. It is the second such primary in Washington since a citizen-sponsored measure was approved by the Legislature in 1989. Any person who is a registered voter in Washington is eligible to vote in the presidential primary. The adoption of a presidential primary has not eliminated the precinct caucus system, which continues to have an important role in the state's process for nominating presidential candidates.

The 1996 Presidential Primary will reflect two important changes made since the first presidential primary in 1992. First, the upcoming primary is scheduled about two months earlier than before, giving Washington voters more nationwide impact. Second, in addition to the Republican and Democrat ballots, an "unaffiliated" ballot will be available for voters who do not wish to participate in the nominating process of either party. All of the candidates listed on the party ballots will appear on this new independent ballot.

Voters are not required to register with a political party to vote in the presidential primary. They may sign a declaration specifying that they want to receive a particular party's ballot and participate in that party's presidential primary. This request, which pertains only to the presidential primary, will be recorded, but does not constitute a political party registration or a declaration of party membership.

You may vote in the presidential primary by absentee ballot. Absentee ballot requests will be available from your county auditor (or in King County, the Division of Records & Elections) prior to the presidential primary. For more information about the 1996 Presidential Primary, please call the state voter hotline at 1-800-448-4881.

CAMPAIGN DISCLOSURE REQUIREMENTS

Contributions to Candidates and Political Committees: An individual may not give more than: a) \$500 in the primary election and \$500 in the general election to a legislative candidate; and b) \$1,000 in the primary and \$1,000 in the general to a candidate for Governor, Lieutenant Governor or the other statewide executive offices. Individuals may give an unlimited amount to a political party, ballot issue committee or other political committee. During the 21 days before the general election, however, a person may contribute no more than \$5,000 to a local or judicial office candidate, political party or committee.

Reporting by Candidates and Political Committees: Most candidates running for public office must file a personal financial affairs statement. Many candidates and political committees also have to file periodic reports showing the source and amount of campaign contributions and a listing of campaign expenditures. These reports are open to the public. Copies are available at the Public Disclosure Commission office in Olympia or at the county elections office in the county where the candidate or committee treasurer lives.

Independent Expenditures: Anyone making expenditures totaling \$100 or more in support of or opposition to a state or local candidate or ballot measure (not including contributions made to these recipients) must file a report with the Public Disclosure Commission within five days. Forms are available from PDC or the county elections office. Also, all political advertising must identify the person paying for the ad.

For additional information, contact the Public Disclosure Commission, 711 Capitol Way, Room 403, P.O. Box 40908, Olympia, WA 98504-0908, (360) 753-1111.

FEDERAL INCOME TAX CREDITS & DEDUCTIONS FOR CONTRIBUTIONS

Political Contributions Tax Credit: The Federal Tax Reform Act of 1986 eliminated the personal tax credit previously allowed for political contributions.

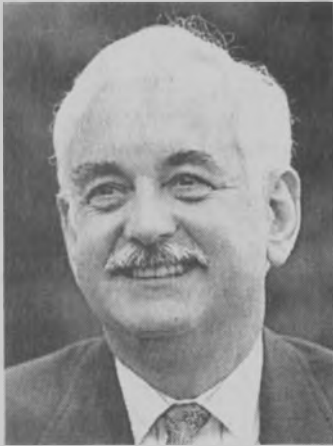
As in the past, contributions or gifts made to political parties or candidates may not be deducted as a business expense. In addition, expenses paid or incurred to take part in any political campaign on behalf of a candidate for public office are not deductible as a business expense. Finally, indirect political contributions, such as advertising for a political party or admission to a program with proceeds going to a political party or candidate, may not be deducted as a business expense.

Presidential Election Campaign Fund Checkoff: Individuals, however, may make a deductible contribution to the Presidential Election Campaign Fund Checkoff. This fund was established to help pay for presidential election campaigns. \$3 may be taken (\$6 on a joint return) from an individual's taxes to go to a general fund, not for any specific party, to meet the expenses of the 1996 presidential election. The contribution will not increase your tax or reduce your refund.



Justice of the Supreme Court

Position 1



Richard B. SANDERS

Nonpartisan

Campaign Address:
Sanders for Supreme Court
4122 128th Avenue S.E., Suite 301
Bellevue, WA 98006
Telephone: (206) 957-7330
E-mail: CourtVote@aol.com

Isn't It Time Our Courts Protected The People?

We need experienced, independent-minded judges with a track record protecting the rights of ordinary people. Richard Sanders has that record.

Most Experienced - Richard Sanders is a citizen lawyer whose landmark cases helped shape constitutional law in Washington for 26 years. His trial and appellate work will make him one of the most experienced justices on the Court.

City Hall Not Above Law - Sanders challenges government for abusing its citizens. When courts found the City of Seattle in contempt for enforcing an unconstitutional law against property owners, the Seattle Times editorialized: Sanders' successful action "makes an important point: City Hall is not above the law."

A Voice for Families, Victims - Increasingly, government tramples individual and family rights. Richard's statewide support comes from ordinary people, not just incumbent officials and judges. He's not beholden to government, but to citizens, whose rights an independent judiciary must protect.

Opposes Lowry Appointee - Sanders' opponent is a career judge, appointed three times by Democrat Governors. Richard comes to public service from the private sector. A UW graduate, he and his attorney wife, Kathleen, practice law together. They live in Bellevue with their three children.



Rosselle PEKELIS

Nonpartisan

Campaign Address:
Committee to Retain
Justice Rosselle Pekelis
P.O. Box 22546
Seattle, WA 98122
Telephone: (206) 722-0659

Justice Rosselle Pekelis of the Washington Supreme Court is one of our state's outstanding judges with a strong, 14-year judicial record of integrity, hard work and fairness.

Common Sense Approach — As a mother of four, grandmother, past PTA President, and active Little League Board member, Rosselle Pekelis brings a common sense approach to justice, understanding the law's impact on the lives of real people. She has earned the support of the Washington State Council of Police Officers, the Washington State Labor Council, every Justice on the Supreme Court, and countless citizens across the state.

A Judge, Not a Politician — Justice Pekelis is an experienced judge who has served on the Superior Court, the Court of Appeals, and now on the Supreme Court. She has been named Washington State Trial Lawyer's "Judge of the Year" and is rated "Exceptionally Well-Qualified" by every major statewide bar association that makes endorsements. Rosselle is not a politician pushing a narrow political agenda. *She is a judge.*

Strong Statewide Support — Rosselle Pekelis is endorsed by Democrats, Republicans, and Independents; former Governors Albert Rosellini, John Spellman and Booth Gardner; Attorney General Christine Gregoire; Pierce County Prosecutor John Ladenburg; and King County Prosecutor Norm Maleng.

SNOHOMISH COUNTY

LOCAL VOTERS PAMPHLET



-Grace Jones

"Taming the American Eagle"

Celebrating the 75th Anniversary of Woman's Suffrage 1920 - 1995

Dear Citizens of Snohomish County:

This Local Voters Pamphlet has been published in conjunction with the Secretary of State's Office. This marks our 5th year of that cooperative arrangement. It is a very economical process and results in a single pamphlet, covering both state and local issues, being mailed to all households in Snohomish County.

You will note that the theme of this pamphlet is the anniversary of the ratification of the 19th Amendment to the United States Constitution, guaranteeing a woman's right to vote. The American Women's Suffragette Movement played a significant role in leading the way as the country adopted the 19th Amendment to the Constitution in 1920. Washington granted women the right to vote ten years before the 19th Amendment made it the law of the land.

We hope this pamphlet helps you as you make your choices on the general election ballot. One of the major roles of the Auditor's Office is to enhance voter education and outreach. We believe this pamphlet does that in a significant and meaningful way. Remember to vote! It's your right and responsibility!

Very truly yours,

Bob Terwilliger

Bob Terwilliger
Snohomish County Auditor

Special thanks to: Louise Lindgren, Heritage Preservation Planner, Department of Planning and Development Services for Snohomish County; Mildred Andrews, historian and author of "Washington Women as Path Breakers"; Ann Shepard, author "Cartooning for Suffrage"; and photographs courtesy of the Special Collections Division, University of Washington Libraries.



Snohomish County

E
X
E
C
U
T
I
V
E



**Bob
DREWEL**
Democrat

"I am fighting to give Snohomish County citizens the service our families deserve and expect from government. My background as a contract negotiator, personnel administrator and Everett Community College President prepared me well to transform county government from a traditional bureaucracy into a fiscally sound, customer-based service organization. I have reorganized departments to speed the permitting process and have fought for managed, healthy growth for our communities. To ease traffic congestion, I secured \$120 million in state and federal funds and paved over 500 miles of roads. Working with the sheriff's department, we are fighting crime with more deputies and community policing efforts than ever before. Through partnerships with business and labor, we've brought more than 5,000 jobs to Snohomish County and provided a long-term vision of economic excellence for our children's future. I would welcome the opportunity to serve our families as Snohomish County Executive in 1996. Thank you."



**Douglas
SMITH**
Republican

We need a return of trust and confidence in government. The incumbent sued referendum petitioners to prevent a vote of the people on county-wide planning policies. Government regulations he supported are taking our freedoms. Accountability and responsibility in government are lacking.

A Korean War veteran who achieved the rank of Captain in the U.S. Navy, Douglas currently serves as an attorney-at-law at the Smith Law firm in Everett. He knows that our system of justice must protect the innocent and the rights of all individuals.

In addition to his navy service and law practice, Doug served in the office of the Secretary of Defense at the Pentagon, and as Special Assistant to the President of the United States at the Oval Office.

An Everett resident and the father of four grown children, all of whom are living in Washington State, Doug knows that Creativity and Productivity are essential to our well-being — and that accountability and responsibility in government are essential, as well.

A frequent lecturer in legal and constitutional matters, Doug has dedicated much of his time to defending individual property rights, so that you and your neighbor will have a stake in your future. Vote for Douglas Smith.

CAMPAIGN MAILING ADDRESS: 1809 Wall ST, Everett, WA 98201 **PHONE NUMBER:** (206) 258-4667

A
S
S
E
S
S
O
R



**Gail S.
RAUCH**
Democrat

Gail Rauch is a positive choice for Snohomish County. She is an expert administrator who has learned several valuable lessons as Assessor: the value of integrity, the importance of customer service and the role of innovation. As the Assessor, Gail has kept her promises and lobbied for property tax reform and the expansion of the senior exemption program. She has maintained a standard of customer service which has earned the office a reputation for being responsive, compassionate, efficient and professional. As an example of the new wave of customer service, Gail took her appraisal team to the community for informational public meetings so the public would not have to come to Everett. Nine meetings were held during late afternoons and evenings to meet the schedules of the taxpayers. Under Gail's leadership her office has created a more cost-effective and efficient operation. These improvements were accomplished through re-organization of staff and improved communication throughout the organization.

Gail is a lifetime resident of Snohomish County. She has twenty-three years of experience in the assessment field and public service. She is good at it and enjoys it. Gail is experienced and dedicated to the citizens of Snohomish County.

CAMPAIGN MAILING ADDRESS: P.O. Box 2143, Everett, WA 98203-0143 **PHONE NUMBER:** (360) 659-8315



**Steve
REID**
Republican

As a small businessman and candidate I travel around the county to meetings or appearances and I am struck by questions and comments relating high taxes to personal well-being "...property taxes went up 45%..." - "...I live on fixed income...can't afford my property taxes..." - "...Why does the state take so much of our property taxes?" Answer; so that they can control our lives. Snohomish County sent the spendmasters in Olympia **\$110,000,000!!** The State sends most of it back to us with mandates and strings attached (toll roads, crippling regulations, fuzzy education programs, etc.). I'm convinced that this State money grab causes voter backlash when local levy and bond issues are presented.

It's time to take back control of our county from the tax and senders and spenders by electing solid leadership to county office. Leadership, like myself, that is not afraid to stand at the county line and say **"NO"** to Big City Elitists and **BIG Intrusive Government**. As your newly elected Assessor, I will fight for local control, lower state property taxes, and streamlined, efficient government. It is so important that the rights to property and ownership be protected for seniors as well as those generations to come. Thank-you

CAMPAIGN MAILING ADDRESS: 10013-D Shoultes RD, #110, Marysville, WA 98270 **PHONE NUMBER:** (360) 658-0674

The above statements are written by the candidates, who are solely responsible for the contents therein.



**Bob
TERWILLIGER**
Democrat

As County Auditor, I have made courteous and effective public service the number one priority of all the divisions of the Auditor's Office and we are meeting this goal at limited cost to the taxpayer. Consistently the Auditor's Office generates more revenue than it costs to run the office and our proposed budget for 1996 is lower than our budget for 1995.

The Auditor's Office has achieved more with less through investments in technology that save staff time, and changes in procedure that save money. Careful planning and prudent fiscal management have resulted in: a planned new recording and document/imaging system; a new voter registration system; a new ballot style and vote counting system; expanded absentee voting; primary as well as general election voters' pamphlets; and expanded vehicle licensing outlets around the county - all providing higher quality, more accessible service to you.

Making government work effectively and efficiently takes knowledge, vision and leadership. I have gained these as County Auditor, ten years as Chief Deputy Auditor and prior experience as a private attorney and deputy prosecutor. To keep that experience and expertise working for you, I ask for your vote for County Auditor. Thank you.

CAMPAIGN MAILING ADDRESS: P.O. Box 3695, Everett, WA 98203-8695 PHONE NUMBER: (206) 481-4107



**David W.
FREESE**
Republican

There is a reason that retired Snohomish County elections supervisor, James McCabe has endorsed David Freese for Snohomish County Auditor. As a longtime supervisor of that major department in the auditor's office, and having served under several auditors (including the present incumbent), he knows and understands what it takes to be a good manager of people. He has seen these qualities in David Freese.

David Freese has developed a major software title; he knows and understands computer technology. He is best equipped to oversee application of computer technologies.

David Freese pioneered fighting for citizens rights against the IRS and has been published professionally, several times, on the subject. He knows and understands how insensitive bureaucracies can be.

In addition to being an attorney and a CPA, he has served pro bono (for free) as Judge Pro Tem and with Snohomish County Legal Services.

He holds degrees from WSU, the University of Washington and New York University. He is an active duty U.S. Army veteran, having served at the end of the Viet Nam era. He is determined to make the Snohomish County Auditor's office the most user-friendly office in the state.

Please vote for David Freese for auditor.



**Pam
DANIELS**
Democrat

Some time you, a family member or friend will need the services of the Clerk's Office for a lawsuit, family death, domestic violence victim, child support/custody, jury duty... I believe this office requires **EXPERIENCED, QUALIFIED LEADERSHIP** to meet "your" needs while supporting the Court.

AS YOUR CLERK: Having had contact with every court/clerk's office in Washington, I understand and value the functions and operations of the County Clerk. I will: • **Improve programs** assisting citizens in "divorce/domestic violence" matters • **Efficiently manage court documents** using cutting-edge technology • **Pursue receipt of court ordered fines** • **Create court information centers** in communities.

EXPERIENCE: My 29 years as a **Legal Support Professional**, 8 years on the **Clerk's Office Procedures Advisory Committee**, and 25 years of **community service** have prepared me to be "your" Clerk.

QUALIFICATIONS: • Assistant Administrator • Office Manager • Legal Assistant • Manager-coordinator of legal staff in 100+ attorney firm • Certified Mediator • Instructor at community college • Small business owner supporting legal community.

SUPPORT: I am proud to be endorsed by the Snohomish County Labor Council, Snohomish County Deputy Sheriff's Association and the Snohomish County Bar Association president, among many others.

Retiring Clerk, Kay Anderson: "Pam Daniels has the necessary qualifications to make an outstanding Snohomish County Clerk."

CAMPAIGN MAILING ADDRESS: P.O. Box 2209, Lynnwood, WA 98036 PHONE NUMBER: (206) 745-1380



**Brenda
BROWN**
Republican

The County Clerk is responsible to Snohomish County citizens using our court systems through aid in court proceedings, recordings and fund management, but **NEVER** offers legal advice.

Most citizens using the clerk's office are in a crisis situation. They expect the clerk's office to perform accurately so that their lives are not further complicated. I support the Facilitator program which assists citizens through the legal maze that confronts them and would explore ways of expanding the program. I believe some of the best ideas on how to improve the office will come from the employees and users. My goal is a "user-friendly" clerk's office for first time or everyday users.

I graduated cum laude from SPU with a BA in Business Management and have been a manager and administrator in the private sector. I have been a Snohomish County resident for 17 years. My husband Vance and I have a daughter Janelle. I am a member of Snohomish County Council on Aging, DayBreak Advisory Board, Home Care Task Force and Safe Harbour Community Church.

The office of County Clerk is **YOUR** office. **Entrust** it to me for effective and efficient management. Please vote **BRENDA BROWN** for County Clerk! Thank You!

CAMPAIGN MAILING ADDRESS: 2918 York RD, Everett, WA 98204 PHONE NUMBER: (206) 355-5917



Snohomish County

S
H
E
R
I
F
F



Patrick W. MURPHY
Democrat

• Appointed Sheriff; • Police Chief 13 years, Snohomish; • Masters Degree Public Administration; • Bachelors Degree Behavioral Science; • Associates Degree Law Enforcement; • F.B.I. Command College Graduate; • Past President, Snohomish County Sheriff's and Police Chief's Association.

I offer thorough, efficient leadership. I have prioritized Enforcement and Prevention programs to work together. This strategy is key to our future of providing effective and cost-efficient law Enforcement and crime prevention throughout Snohomish County.

I am the senior law enforcement leader in Snohomish County, with this being my 14th year as a Police Chief and/or Sheriff.

As Police Chief and now your Sheriff, I have an established track record with over 22 years experience designing and implementing community policing programs for our communities: • D.A.R.E. and Gang Resistance Education in our schools; • Crime Victim Assistance; • Aggressive neighborhood participation; • Your Deputies assigned to your neighborhood.

As the Sheriff I will establish a Sheriff's advisory board comprised of citizens county wide.

I am a strong defender of citizens rights as guaranteed by the United States Constitution.

I also believe in being open and accessible to the citizens 24 hours a day and welcome input from my employer - you, the citizens of Snohomish County.

CAMPAIGN MAILING ADDRESS: 1429 1 Avenue D, #224, Snohomish, WA 98290 PHONE: (206) 334-9839



Rick BART
Republican

As a lifelong county resident, Rick Bart understands citizens' concerns. As a 23-year veteran of the Snohomish County Sheriff's Office, he knows what needs to be done.

A graduate of Mountlake Terrace High, Rick is a law enforcement professional. He earned a degree in Criminal Justice from Seattle University, served four years in Air Force Security, and has worked in virtually every phase of the Sheriff's office: patrol, custody, civil, and investigations. Promoted through the ranks, Rick is currently Commander of the Investigations Division. He is also a state certified law enforcement instructor.

Over the years, Rick has earned a well-deserved reputation for getting the job done. He has led complex homicide investigations, including the Charles Campbell and Michael Hightower cases.

He has been decorated for heroism, received the Medal of Merit, the Outstanding Deputy Award and was recognized Washington State Law Enforcement Officer of the Year (1989).

The greatest tribute to Rick, however, is the endorsement of his candidacy by family members of victims of violent crimes. This includes Hilda Ayers, mother and grandmother of Charles Campbell's victims, Renee and Shanna Wickland.

With Rick Bart, law enforcement is more than just a job - it's a commitment.

CAMPAIGN MAILING ADDRESS: P.O. Box 12087, Everett, WA 98206-2087 PHONE NUMBER: (360) 653-3744

T
R
E
A
S
U
R
E
R



Bob DANTINI
Democrat

The Treasurer's office requires a finance professional, not a professional politician. Your County Treasurer is responsible for managing and investing almost \$700 million annually. You need a working Treasurer who is an experienced professional and personally accountable to the public.

I am a Certified Public Accountant. The professional designation of "CPA" assures the highest degree of competency. I have achieved the designation of Professional Finance Officer by the Washington Finance Officer's Association. Since 1982, I have obtained over 500 hours of professional education related to the position of Treasurer.

I am qualified to be your Treasurer. I have twenty years of valuable experience in public, private, and municipal finance, accounting and auditing. For the past twelve years I have been the county's internal auditor. My recommendations have saved county taxpayers millions of dollars. I will bring the same level of dedication and commitment to the job of County Treasurer.

My primary goal is to save you money. I will increase the accountability of the Treasurer's office. I will safeguard your taxes from fraud and abuse. I will establish sound investment policies and make safe and prudent investment decisions.

I am the qualified candidate for Snohomish County Treasurer.

CAMPAIGN MAILING ADDRESS: P.O. Box 362, Everett, WA 98206-0362 PHONE NUMBER: (206) 335-5738



Tim ERWIN
Republican

The County Treasurer affects the lives of all Snohomish County citizens. In addition to receiving and disbursing your tax dollars, the Treasurer has responsibility for an investment portfolio of over \$600 million. Through these investments, the Treasurer has direct influence over school, fire, hospital, utility, and other taxing districts. It is crucial that we have someone with Tim Erwin's philosophy and qualifications serving us as Treasurer.

Tim Erwin has the experience that counts. Having served as the Chief Financial Officer of a nonprofit institute, Tim has managed multi-million dollar budgets. Tim computerized the accounting and administrative functions of that institute, increasing efficiency, productivity, and improving customer service. As a state senator, Tim opposed tax increases and was instrumental in taking politics out of the State Investment Board.

Tim Erwin will bring substantial business, administrative, and communication skills to this office. Tim's primary goals are to enhance the rate of return on your tax dollars, modernize the existing computer systems, increase accessibility by providing on-line services such as the Internet, and establish labor-management team building efforts. Tim has a proven track record of putting people first. *Vote for Tim Erwin — your sound investment in Snohomish County.*

CAMPAIGN MAILING ADDRESS: 12102 4 AV W, #21-111, Everett, WA 98204-6405 PHONE NUMBER: (206) 514-3385

City of Snohomish

Proposition No. 1



Explanatory Statement

BALLOT TITLE

PROPOSITION NO. 1

Shall the city of Snohomish be annexed to and be a part of the Sno-Isle Regional Library System?

On August 15, 1995, the Snohomish City Council passed Ordinance 1788 declaring its intent to join and be annexed by the Sno-Isle Regional Library District, requesting the concurrence of the District Board of Trustees and requesting this annexation measure be placed before the voters. If passed by the voters, the City of Snohomish would be annexed to the Sno-Isle Regional Library District effective January 1, 1997. Upon annexation, the Sno-Isle Regional Library District would assume responsibility through an interlocal agreement with the City for provision of library services to the residents of the City. Another effect of the annexation would be the reduction of the City's regular property tax levy rate each year by the amount of the library District's regular tax levy rate. The effect of the annexation would thus be tax and revenue neutral.

Statement for

The Snohomish Public Library offers residents of all ages an invaluable resource for education and entertainment. Over the years as our community has outgrown the building that houses these resources, many people have devoted much time to finding an equitable method to finance improvements to our library. We now are in a position to take advantage of new legislation to create this method, but the first step requires that city residents vote yes to annex to the Sno-Isle Library System.

By voting yes on this ballot measure, you will not increase your taxes, but will start the process whereby all users of the library, both within and without the city, will share equally in its support. Vote yes to lay the foundation for the library our community deserves.

Statement against

NO STATEMENT SUBMITTED.

STATEMENT PREPARED BY: DOUG EWING, GARY
FERGUSON, ANN AVERILL



City of Snohomish Council

W
A
R
D

1

No
Photo
Submitted

Candidate did not submit a statement.

**Susan
MURPHY**

UNOPPOSED

W
A
R
D

2



**Bruce
BERNER**

Bruce and Charisse bought a home in Snohomish to raise their son Eric. Bruce says "We wanted an established community with good schools, nearby services, neighbors helping neighbors, and a sense of history and culture."

Bruce, a native of the Puget Sound area, served six years in the Air Force security police, worked as a forest firefighter, highway assistance van driver, and a fish hatchery management intern. Bruce has a degree in Natural Resource Management from Sterling College in Vermont. Charisse is a music teacher at Emerson Elementary. Their son Eric is the cutest kid in the world.

Bruce is running to help his family and his community assure a good quality of life. Snohomish is a good town and we can make it better. Some changes are needed. We must assure adequate police and fire protection. We must have sewer rate equity. New developments must pay their fair share and not detract from the community. Bruce says it simply "I care enough about my son, my family and my community so I'm going to put in the time and effort."

CAMPAIGN MAILING ADDRESS: 302 4 ST, Snohomish, WA 98290-2558 PHONE NUMBER: (360) 568-7407

UNOPPOSED

City of Snohomish Council



WARD
3



**Dean C.
RANDALL**

Snohomish needs responsive new leadership to face the many important challenges confronting our city. The high water and sewer rates, improvement and repair of the city's streets and sidewalks and better communications between the city council and the citizens of Snohomish are my top priorities.

I have worked with volunteer organizations in our community. I have worked over 15 years in administrative and supervisory positions with GTE Northwest and GTE Alaska. I have a Master's degree in Business Administration from the University of Puget Sound and a Bachelor of Arts degree in Political Science from the University of Washington. I have extensive experience working with corporate budgets as well as budgets for community and church organizations.

As a member of the Snohomish City Council, I will utilize my business education and business experience to direct and manage the city in a more efficient and economical manner. For Snohomish's future, I need your vote.

CAMPAIGN MAILING ADDRESS: 1603 Lakeview PL, Snohomish, WA 98290 **PHONE NUMBER:** (360) 568-8107



**A. Douglas
THORNDIKE**

I'd like your vote for Ward 3 to continue my community service. I've served Snohomish for several years, and was selected to fill a council opening in January. As I ask for your vote, here's a little about me: • Married 25 years to Jane Thorndike. Daughters Stacy (Whitman College) and Cheryl (SHS). Washington native, Snohomish resident since 1978. Bachelor's, UW. MBA, Seattle University. Retired USNR (23 years). Experience in marketing, economic consulting, estimating, scheduling, and cost management. • Planning commission chair, '93-94. Council appointee, January '95. Park Board representative. Little League president. Supporter for youth activity center, SHS softball and band.

KEY ISSUES: **Growth and Quality of Life** • Evaluate differing points of view before making policies and decisions; • Control budgets and set fair rates (share costs); • Ensure projects are managed responsibly; • Support our community business base; • Set and handle regulations consistently.

PRIORITY: Manage for the Future • Enhance the economy, revenue, and service base of Snohomish; • Manage city finances wisely; • Understand costs and benefits, both public and private, resulting from policies and rules; • Analyze alternatives and hidden or indirect costs (developments and regulations); • Preserve local autonomy and direct control by our own citizens.

THANKS FOR YOUR SUPPORT!

CAMPAIGN MAILING ADDRESS: P.O. Box 1, Snohomish, WA 98291-0001 **PHONE NUMBER:** (360) 568-8729

AT
LARGE
POSITION
7



**Cameron M.
BAILEY**

The largest issue facing City Government is cooperation. City Government should be much more responsive to the needs of its citizens, civic groups, and its businesses, than it has been in the past. City Government needs to be both fair and courteous in all its dealings.

Cameron Bailey is the only person running for City Council with both the will and the ability to make City Government responsive to all its businesses, civic groups, and citizens concerns.

When Cameron is in office and disputes arise, he will personally sit down with both parties and attempt to mediate a fair solution.

Cameron's family has provided this leadership to the citizens of Snohomish since 1890. Representing them to both Snohomish County and the State of Washington. Cameron has developed his financial and managerial skills by owning and operating his own restaurant supply business.

CAMPAIGN MAILING ADDRESS: 1206 Hillcrest DR, Snohomish, WA 98290 **PHONE NUMBER:** (360) 568-5432



**Chris
LUNDVALL**

Changes are needed in Snohomish city government.

First, sewer rates must be equalized. The present rate structure overcharges single family households to the benefit of apartment and large commercial users. We must lighten the burden of fixed income ratepayers and charge everyone the same rate.

Second, the city must insist that new development meet all its own expenses. A recent apartment project on the Pilchuck River received scarce local street funds to improve its access road. The city council should review mitigation fees imposed by other cities to see if any are appropriate to our situation.

Third, the city must change its attitude towards its neighbors. The bad faith showed by the city in its dealings with the Bickford Committee made many enemies. This contributed to the Bickford annexation failure and the loss of large sales tax revenues. A spirit of mutual cooperation will take us a long way as we seek to grow.

Fourth, the city must work harder to maintain its environmental quality.

CAMPAIGN MAILING ADDRESS: 1510 Bickford, Snohomish, WA 98290 **PHONE NUMBER:** (360) 568-5408



Everett School District No. 2

Director-at-Large

P
O
S
I
T
I
O
N
1



**Paula
KELLEY-CLARKE**

Our children are the future, and education is vital to their success. Everett schools face difficult challenges, and progress requires leadership from people of experience and commitment. I have participated in education on many levels, as a parent volunteer in the classroom and on District planning and levy committees, and as a teacher: at ECC, in the Peace Corps, and currently with the Refugee and Immigrant Forum of Snohomish County.

As we face changes and respond to the recent audit, • we need leaders who understand the problems and who can work with and represent parents and community members from all areas of the Everett School District. As we grow and our population becomes more diverse, • we need safe schools, relevant education, and high standards. • We need to be fiscally responsible, and accountable to the public. My experience as a parent and an educator enables me to understand these complex issues facing us. I understand the role a Board Member can play to make a difference.

I am running for a seat on the School Board because I care about our children and their educational needs, and because I can provide the leadership we need to assure all students succeed.



**Randy
TRETTEVIK**

We need sensible leadership that is responsive to the concerns, values and priorities of parents and taxpayers. As a father of four children in Everett Schools, I care intensely about their education. I also have deep concerns about a lack of trust that exists between the School Board, the administration and many parents.

Accountability to Constituents - School Board members are elected representatives who need to be approachable and responsive to the concerns of the citizens who pay for and entrust their children to the schools. Parents deserve to be heard and have a right to be taken seriously.

Fiscal Responsibility - Public education costs more than it should. Our present system is burdened by costly government mandates. My background in financial management will enable me to make sound financial decisions. The Board must exercise responsible stewardship over every tax dollar spent.

High Academic Standards - Based on the results of a 1994 statewide test of math, reading and language, the Everett District lagged behind other local districts. Since 1992 the scores have declined and only reading scores have stayed above the 50th percentile nationwide. We must make academic excellence a higher priority.

CAMPAIGN MAILING ADDRESS: 16315 26 DR SE, Mill Creek, WA 98012 **PHONE NUMBER:** (206) 481-6222

P
O
S
I
T
I
O
N
2



**Roy
YATES**

During my tenure on the Everett School Board, our district has grown to 16,000 students, a 19% increase. As a district, we have done a good job of dealing with growth. We have managed our resources in a conservative and prudent manner. We have opened six new schools and renovated several others. These capital projects were completed on budget and on schedule as we told our constituents they would.

Five years ago we embarked on a strategic planning effort, the primary purpose of which is to improve Everett education so that our students are well prepared to meet the challenges of the 21st century. I strongly supported these efforts and will continue to do so.

I've been actively involved in our community for over 25 years. It is very clear to me that education works best when the efforts of the Everett School District are done in partnership with parents, business and youth and family serving agencies.

Our school board was recognized by the Washington State School Directors Association in 1990 and again in 1994 as the large district school board of the year. I take pride in this recognition by our peers for the efforts we are making on behalf of our community.



**Ed
McCORMICK**

We can have safe, great schools and lower taxes! The keys are accountability and efficiency, things successful businesses have used for years.

Our schools are big business! Our budget is over \$100 million and rising rapidly. Our mid-level supervisors make 85,000+ per year. We retain an expensive law firm, Perkins, Cole, for routine work while cutting back support for students with serious medical/behavioral problems. We are losing our best teachers while adding layers of supervisors. Workers compensation claims take 3 years to process! Our school tax rate, the fastest rising tax, is the highest District rate in the county.

This must change! As Seattle's experience shows, educators are not trained to be managers. We need to streamline and update our bureaucracy. We need professional and continuous management training. We need to listen to and include the entire community.

In sum, we need a "hands-on," pro-active Board that can "bridge the gap" between these groups by stressing communication, harmony, negotiation, and basic standards. I believe my training and experience as a Fortune 500 executive, manager and State Revenue Officer best qualify me to achieve these goals.

CAMPAIGN MAILING ADDRESS: 9209 10 AV SE, Everett, WA 98208 **PHONE NUMBER:** (206) 355-3415

The above statements are written by the candidates, who are solely responsible for the contents therein.

Granite Falls School District No. 332

Director



D
I
S
T
R
I
C
T

1

No
Photo
Submitted

Candidate did not submit a statement.

**Richard W.
SHORT**

UNOPPOSED

D
I
S
T
R
I
C
T

2

No
Photo
Submitted

As a member of the Community and School Board I have helped bring the School District into the 90's and want to help it into the 21st Century. Mountain Way Elementary opened during my first term and I wish to be a member of the School Board when Monte Cristo Elementary comes alive. My two children both started and completed school here and I now have a grandchild who will be in school very soon. I have lived in this Community for 25 years and am very committed to the growth of both community and the School District.

CAMPAIGN MAILING ADDRESS: P.O. Box 599, Granite Falls, WA 98252 PHONE NUMBER: (360) 691-7650

**Lynette J.
HOWARD**

UNOPPOSED



Granite Falls School District No. 332 Director

D
I
S
T
R
I
C
T
4



**Robert A.
QUARTERMAN**

Education: • Associates Degree, E.C.C. in Electronics; • Bachelors Degree, W.W.S.U. in Industrial Technology; • Post Graduate classes in computer technologies and management.

Occupation: Engineer with SeaMED Corporation.

Professional Qualifications: As an Engineering Manager, I have experience managing people, schedule and finance on projects and department budgets. These skills would be useful as a member of the School Board.

Personal Information: Our family chose Granite Falls as our home because we wanted a small town rural life style. When our two daughters entered the First Grade in Granite Falls, we became involved in many school activities. We wanted to be assured they were receiving the best education that the schools could provide. It is to this end that I was prompted to accept an appointment to the School Board in 1992. I would like to continue to serve as a member of the Board in order to see the completion of the building projects and other changes, we have begun. Future challenges will be population growth, decreased financial support from the state, and concerns of parents and staff.

Community Involvement: Little League Umpire (1988); Drug Task Force (1989-1992); Vocational Education (1992-1995); Junior Achievement (1991-1992); Strategic Planning (1992); School Board (1992-1995).

CAMPAIGN MAILING ADDRESS: 4929 Scherrer RD, Granite Falls, WA 98252 **PHONE NUMBER:** (360) 691-5338



**Carol R.
HAUG**

It is vital that each child of Granite Falls is given every educational opportunity to be prepared for his/her challenging future. Fighting for that has been our goal since our children were born. It has been an integral part of our lives to be committed, involved parents: seven years of cooperative preschool work and board member positions, running of successful fundraising programs, four years of elementary school volunteering.

As a school board member, it will be my job to work with the other members to develop our school district into one that demands no less than the best for our children. We will need to keep up with the demands of technology, the population growth, competitive sports programs and the creative enrichment of the arts. We fall short in all of these and more now. It will be a difficult but essential job, but one that we can achieve with the dedication of the school board. I will be a committed board member who will make the difference in representation of your district.

CAMPAIGN MAILING ADDRESS: 14719 72 ST NE, Lake Stevens, WA 98258 **PHONE NUMBER:** (360) 691-4984

"AND IN THE BEGINNING..."

With the first session of the Territorial Legislature in 1854, Seattle's founder, Arthur Armstrong Denny, proposed the first bill to grant the vote to "white women."

The bill was defeated and later election laws allowing "all white citizens" to vote were interpreted by the legislature, to exclude women. Early legislators, not conceding that women were citizens, retained the all-male status quo, but not for long...



"Justice - Make Way!"
-Laura Foster, cartoonist

Lake Stevens School District No. 4 Director



D
I
S
T
R
I
C
T

1



**Robert (Bob)
BERNETHY**

Lived in Lake Stevens area for the past forty years. Graduated from Lake Stevens High School in 1965. Two years U.S. Army, Viet Nam veteran. Two years Everett Community College.

Employed at Scott Paper Company, Everett for twenty-seven years. Manager in the manufacturing division. Sit on the Scott Employees Credit Union as a board member. On committee with union/management personnel to resolve issues around labor relations.

Married with four children. Two who are graduated from Lake Stevens and two that are attending elementary school in Lake Stevens district.

Coached youth sports over the past fifteen years. Girls softball and basketball. Boys basketball and baseball.

Education of our youth is the number one priority in our society today. If elected I will continue to work with the school board, district administrators and people of the Lake Stevens schools to continue to make our district one of the top school districts in the state.

CAMPAIGN MAILING ADDRESS: 7529 44 ST NE, Marysville, WA 98270 PHONE NUMBER: (206) 334-5982

UNOPPOSED

D
I
S
T
R
I
C
T

2



**Randy M.
ROGERS**

Education: BA in Accounting and Finance, cum laude, University of Washington.

Occupation: Retired Financial Executive.

Professional Qualifications: Executive Vice President, Hemmeter Corporation, resort hotel developer and operator, Hawaii; Chief Financial Officer, Frontier Airlines, Denver; Chief Financial Officer, Aloha Airlines, Honolulu; Certified Public Accountant.

Personal Information: Married, with two children attending Lake Stevens schools; 1970 Graduate of Lake Stevens High School.

Community Involvement: President, Lake Stevens Soccer Club; Director, Lake Stevens Jr. Athletic Association; Tournament Director, Lake Stevens Soccer Bash; Soccer Coach; Little League Baseball Manager; Member of the Lake Stevens School District Strategic Plan Committee; Member of the School District Boundary Line Adjustment Committee.

UNOPPOSED



Lake Stevens School District No. 4 Director

D I S T R I C T 3



**Loydeen
CHAPMAN**

Personal Information: • Age: 46 • Married: 24 years • 2 daughters in Lake Stevens Schools • 17 year resident of Lake Stevens • Lake Stevens graduate, 2 years college.

Community Involvement: • Presently serving on Lake Stevens School Board (legislative representative, various committees within the district, volunteer at all the schools during the year); • Appointed to the Snohomish County Childrens Commission representing the Lake Stevens area; • Member Ebenezer Lutheran Church (sponsor youth activities, Sunday school teacher); • Helped with organization of SCRAP; • Family volunteers for the Community Food Bank; • Volunteer for Little League Softball team.

Candidate's Statement: Today's students have complex needs to be met in order to achieve in our advanced world. Yet there are basics that are reasonable to demand in our schools. Schools must see that appropriate knowledge and skills are actually acquired; children must be safe and held accountable for their behavior; and parents must be welcomed as partners. Additionally, school districts must be fiscally responsible in a world of limited funding. Lake Stevens has continued to invest in children through its schools. I can pledge the time needed to focus on that commitment of excellence in our schools and I will remain an advocate for all our children.



**Sam
BRYCE**

I am actively seeking position #3 on the Lake Stevens School Board. As a parent of two school age children and being a local businessman, I am committed to the success and welfare of all of our children. In pursuing this position, I want to ensure that our system meets the needs of all students, encourage support from local businesses and foster active participation from community school members.

As part of my commitment to the success of the children, I have created for the past eight years, a youth employment program. I have been a strong community and school supporter by providing scholarships for many students and sponsoring several sports teams.

As a school board member, I will seek to incorporate technology in all classrooms, enhance student vocational training, and recruit business and community members to serve as active partners in public education.

It is said it takes a whole village to raise a child, and I hope I can be a part of that process.

CAMPAIGN MAILING ADDRESS: 10609 Vernon RD, Lake Stevens, WA 98258 **PHONE NUMBER:** (206) 334-5280

"POLITICS...NO PLACE FOR A WOMAN..."



**"Tearing off the Bonds"
-Lou Rogers, cartoonist**

"...respectable women... whom we would naturally look to to purify the political atmosphere by her vote, her influence and her example, will not enter into the filthy political mess of modern politics; her whole nature shrinks from it, and she will not use her right to vote."

-Antisuffragist Charles V. Cooper
Oregon, 1906

In the General Election of 1884, Washington women cast 12,000 of the 48,000 ballots cast. According to the New York Evening Post, "nine-tenths of its adult female population availed themselves of the right to vote with a hearty enthusiasm."

Monroe School District No. 103

Director



D
I
S
T
R
I
C
T
2



**Debra
KOLRUD**

As a 27 year member of the Monroe community and the involved parent of three children attending the Monroe public schools, I am concerned about the direction of public education. As taxes continue to rise, academic standards continue to fall. In 1994 Washington ranked 49 out of 51 (including D.C.) states for the amount of education tax dollars that actually reach the classroom. The results are clearly measured with declining test scores. In 1994 Monroe's 11th grade Achievement Test dropped from 40th to 30th percentiles in History. We must return to proven principles in education and emphasize basic education along with fiscal responsibility. My focus will be to bring local control of our schools back to the parents and community. As the President of three corporations I have learned the importance of listening, setting standards and requiring results. The principles incorporated in running a successful business should be incorporated in the school district to ensure success. I am a dedicated volunteer in the classrooms and PTA for six years, along with serving on over eight school committees. I have attended School Board meetings regularly for several years. Education is the key to our future. Let's work together for our children.

CAMPAIGN MAILING ADDRESS: 23426 146 ST SE, Monroe, WA 98272 PHONE NUMBER: (360) 794-7958



**Mark D.
WAKEFIELD**

I am married and my wife Linda is a registered nurse. We have four children, Valerie - 13, Brian - 4, Brady - 2, and Katie is 9-months. We have been members of the Monroe community for over fifteen years.

I am completing my twentieth year in law enforcement. I have been a patrol officer, narcotics detective, sergeant, and for the last three years I have been the administrative commander. I have completed numerous courses for law enforcement management which include middle management and the Command College. I have also had training in budget preparation and manage the budget for the police department.

My education includes a BA from the University of Washington. I have also attended the National Fire Academy as a fire investigator.

I am currently vice president of the community council at Frank Wagner Middle School. I am also a member of the bond planning committee and Citizens for Monroe Schools. I am also a member of the Monroe Police Officer's Association and St. Mary's Church.

As a board member I would work hard and study issues to make informed responsible decisions.

CAMPAIGN MAILING ADDRESS: 14500 247 DR SE, Monroe, WA 98272 PHONE NUMBER: (360) 794-8961

D
I
S
T
R
I
C
T
4



**Jacqueline
McKEE**

In the next few years, the Monroe School District will face the tremendous challenge of providing space for a record number of students, in buildings that were last expanded in 1987. To navigate these seas of change will require leadership and experience — the kind I gained in the sixteen years I have served as a member of the Board of Directors.

If I am re-elected, I will continue to be a strong advocate for student programs that meet basic skills requirements. At the same time, I will ensure that the District addresses the students' needs for learning to use the technology of the future workplace.

Public education is our community's largest investment, and the community has the right to demand the best we can provide for their money.

CAMPAIGN MAILING ADDRESS: 21820 96 AV SE, Snohomish, WA 98290 PHONE NUMBER: (360) 668-2773



**Sue
MAGRUDER**

We as parents, teachers and community want the best education for our children that our tax dollars can buy. You must ask yourself if you are getting the best.

As the owner of a successful business I believe I can use the knowledge I have gained to help the people of the Monroe School District face the challenges that lie ahead.

The future is here with rapidly increasing technologies and sciences that were dreams 30 years ago. We all want our children equipped to lead the way into the next century, but this will happen only if we have the necessary curriculum, equipment and teaching staff to empower our children.

I believe I can help by asking those questions that you would ask and listening to your comments and suggestions. I also believe that I must be accountable to you. I am willing to serve you, my school district and community if you will elect me. Thank you.

CAMPAIGN MAILING ADDRESS: P.O. Box 1825, Snohomish, WA 98291-1825 PHONE NUMBER: (360) 668-6386



Monroe School District No. 103 Director

D
I
S
T
R
I
C
T
5



**Eugene V.
ELLEDGE**

As an incumbent school board member with experience as a teacher, principal and administrator, I believe it is imperative to keep positive continuity in the school district.

We have five students who attended Monroe schools and have gone on to college. We also have grandchildren in the Monroe schools.

One of our most important tasks as a Board is to recruit outstanding teachers, provide for staff development, and provide adequate learning materials. The early child development program, the assessment program, and the use of technology are examples of the many successes in our District.

Visiting schools and classrooms is important to me, and I attempt this at least weekly. The Board's decisions ultimately affect the classroom, and I am knowledgeable of what occurs in our schools.

We have motivating and quality teachers, strong parent involvement, and positive administrative leadership. As an incumbent, I am proud to have kept the focus on learning.

We do have challenges and will continue to have them, particularly in how growth is accommodated. I'm committed to the dedication of time and energy to be part of a team that will address these challenges. My interest is in providing the best for children.

CAMPAIGN MAILING ADDRESS: P.O. Box 147, Monroe, WA 98272 PHONE NUMBER: (360) 794-6093



**M. Christine
FOSTER**

Christine Foster has been an active participant in our state's educational policies for more than five years. She has worked with legislators to define education goals and has spoken before the state senate regarding education reform. Raised and educated in the conservative Midwest, she champions the value of commitment and the importance of teaching responsibility first hand. Christine Foster is committed to helping the citizens of Monroe achieve standards of excellence for our children through our local schools. We, as parents and citizens of Monroe, need to show commitment to our children's education, both inside the classroom and away. By helping our children set realistic goals for themselves and giving them the very best in fundamental education including English language skills, math, and science, we can realize our goals. Today's children also need to understand personal responsibility and apply it in their everyday lives. They will not learn this from television or "feel good psychology/self-esteem" classes. If we instead provide opportunities for children to achieve self-respect through accomplishment and require responsibility for their actions, all of society benefits.

"Indocti discant et ament meminisse periti" - Horace

(Let the unlearned learn, and the learned delight in remembering.)

CAMPAIGN MAILING ADDRESS: 15027 167 AV SE, Monroe, WA 98272 PHONE NUMBER: (360) 805-9807

"SALOON LOBBY STRIKES BLOW AGAINST SUFFRAGE..."

In 1883, Washington was the third territory in the nation to grant women the right to vote.

A GOVERNMENT OF THE PEOPLE
BY THE PEOPLE FOR THE PEOPLE



The womens' vote centered on social and moral reform that strove to eliminate saloons, brothels and political graft.

In 1887, the Territorial Supreme Court pressured by the saloon lobby, declared the 1883 suffrage law invalid due to a technicality.

By a margin of two to one, in 1889, the equal suffrage amendment to the state constitution was dealt a staggering defeat as women voters were disenfranchised.

"Are Not the Women Half the Nation?"
-Mary Taylor, cartoonist

Northshore School District No. 417

Director



D
I
S
T
R
I
C
T
2



**Sue
PARO**

Over the past 15 years I've volunteered extensively on behalf of Northshore children because I believe quality education enriches individual lives and builds our community. I've served on eleven district committees including: Shared-decision making, Capital Projects, and Levy and worked as PTA President for Lockwood, Kenmore Jr High, and Northshore Council.

The challenge for public education and our district is to do **more** with **fewer resources**. We must be willing to **listen**, **discuss** the issues, **evaluate** the program, and **make adjustments**. I pledge to address the needs of our children and schools by using the **knowledge, experience and skills** I've gained. **Now, I ask for your vote!**

"Paro an extremely effective advocate for all children, focused on substantive issues. She's committed, knowledgeable, reflective and responsive." —Dick Giger, former Deputy Superintendent

"Sue has a clear understanding of the educational needs of the students, teachers, and parents." —Joyce Lyons, IHS teacher

CAMPAIGN MAILING ADDRESS: P.O. Box 82113, Kenmore, WA 98028 PHONE NUMBER: (206) 483-6651



**Rich
BALDWIN**

Rich Baldwin was chosen by the Northshore School Board in 1994 to fill a vacancy on the board.

Rich focuses on **high academic standards** and **budget priorities** that support the district's educational mission, encourages **trust** and **teamwork**, and seeks **partnerships** with local businesses.

Rich brings a critical technology and business perspective to the board, and a strong background of volunteer service. He worked with Washington Science Olympiad (a student program) for the past four years and volunteers as an engineer in the classroom. He was PTA president at Shelton View Elementary, received a Golden Acorn award for service, and chaired committees for the Northshore PTA Council. **Rich** served on several school district committees and co-chaired the Shared Decision-Making Task Force until his appointment to the board.

A senior engineer at Korry Electronics, **Rich** holds a master's degree in electrical engineering. He has two children attending Shelton View Elementary.

CAMPAIGN MAILING ADDRESS: 606 240 ST SW, Bothell, WA 98021-8510 PHONE NUMBER: (206) 481-2930

D
I
S
T
R
I
C
T
3



**B-Z Sundstrom
DAVIS**

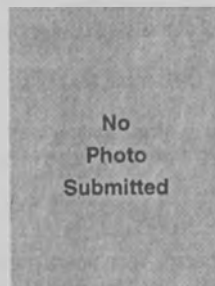
Thomas Jefferson wrote, "Above all things I hope the education of the common people will be attended to, convinced that on their good senses we may rely with the most security for the preservation of a due degree of liberty."

Those words ring as true today as they did when written 200 years ago. Students represent 20% of our population and 100% of our future. Educational opportunities for all children will strengthen our community and improve our way of life.

B-Z will continue to support the opportunity for teachers to be creative, the opportunity for students to explore options, and the opportunity for parents to be involved. Working together will preserve and improve our education system.

B-Z (Sundstrom) Davis grew up in Bothell, attended Northshore Schools, is married and has two children. She has served on the Northshore School Board four years.

CAMPAIGN MAILING ADDRESS: 10727 NE 187, Bothell, WA 98011 PHONE NUMBER: (206) 487-1442



**Paul
EMERSON**

Candidate did not submit a statement.



Snohomish School District No. 201 Director

D
I
S
T
R
I
C
T
2



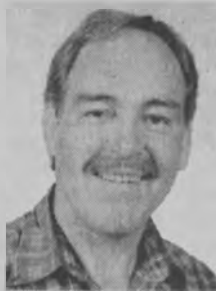
**Candace
McKENNA**

Preparing our community's children for a rapidly changing world is no small task. As a member of the Snohomish School Board, I believe I can make several valuable contributions to this effort. I will find ways to help the district to work smarter and make our education dollars go further. I will work to build partnerships between businesses and schools. I will earn trust through listening and being responsive to the concerns of all constituents. I will study the issues and make informed decisions. I will work to make sure that communication throughout the district is ongoing, open and honest.

As both a parent and a professional, I have worked at the district level in several areas: strategic planning, grant writing, curriculum, and technology program development and budgets. At the school level, I have been an art docent, classroom volunteer, member of the PTA, and co-facilitator of a communications team.

I work with Microsoft as a computational linguist. I have a masters degree in Linguistics from the University of Washington. I am married to Randy Howard and our three children attend Valley View Middle and Emerson Elementary Schools in Snohomish. Our children and their education is our highest priority.

CAMPAIGN MAILING ADDRESS: P.O. Box 1766, Snohomish, WA 98291 **PHONE NUMBER:** (360) 568-3542



**Daniel H.
SMOOTS**

Education: Masters in Education, University of Washington.

Occupation: Currently, I am a small business owner operating throughout Snohomish County. We build offices, retail buildings, apartments, and warehouses. Previously, I was a Special Education Teacher working with emotionally disturbed children.

Professional Qualifications: I am currently the Snohomish School Director for District #2. I was appointed in January 1994. I am the past President and Vice President of the Snohomish Affordable Housing Group.

Candidate's Statement: I believe that public education is at a critical juncture. In Snohomish, the community expects our school system to be fully open to the public and to prove that the level of learning is increasing. The four areas that need primary focus are: 1) Budget; increases stay in line with inflation plus growth. 2) Expectations for learning; set higher each year, especially for the average student. 3) Technical and vocational classes; increase dramatically at the secondary level to coincide with the employment opportunities. 4) Scope of responsibility; our School District needs to improve what we currently teach before taking on new community problems.

CAMPAIGN MAILING ADDRESS: 721 Avenue D, #E, Snohomish, WA 98290 **PHONE NUMBER:** (206) 334-7600



**Betsy
WYGANT**

My family has lived in Snohomish for the past 14 years. I have been a board member for the past 7 years, currently serving as president.

If re-elected I will focus on: • Strengthening the two-way communication between community and schools. • Being a strong voice, representing the community, through the school board. • Challenging all students to perform at high levels. • Continuing fiscal responsibility. • Supporting local school decision-making, while remaining informed and involved at the state level. • Continually assessing our effectiveness in meeting the needs of students. • Supporting staff with the necessary resources to meet the needs of students. • Emphasizing lifelong learning.

We all must work together to educate our children for the future. I will provide the experience and commitment we need.

CAMPAIGN MAILING ADDRESS: 12831 141 PL SE, Snohomish, WA 98290 **PHONE NUMBER:** (360) 568-3521



**Al
THOM**

Education: I attended school in the Edmonds District, graduate of Mountlake Terrace High School. One year at Eastern Oregon State University. One year at Edmonds Community College. Four years electrical apprenticeship. Eighteen years in business for myself.

Occupation: I am a licensed Electrician, and a licensed Electrical Administrator. Carpenter, builder and business manager. A licensed General Contractor and I sweep up at night.

Professional Qualifications: 18 years of business management, including buying, selling and employee management. I have negotiated many contracts with clients and sub-contractors. I am very good in dealing with "PEOPLE."

Personal Information: I am a husband of 21 years, and a father of three great kids (ages 20, 17, 15). I am also a licensed Foster Parent and have two beautiful kids (ages 4 and 3).

Community Involvement: I am an active member of Snohomish Community Church. As a board member of the "Snohomish County Property Rights Alliance" I have experience in decision making. Also I have worked with youth in the Snohomish Little League for many years. As a board member I will bring skill and integrity to the School District. Accountability will replace "business as usual" and "citizen involvement" will be the way "We" will solve problems together.

CAMPAIGN MAILING ADDRESS: P.O. Box 1344, Snohomish, WA 98291 **PHONE NUMBER:** (206) 338-7970

The above statements are written by the candidates, who are solely responsible for the contents therein.

Fire Protection District No. 3 Commissioner



P
O
S
I
T
I
O
N

1



**Gottlieb
RIBARY**

UNOPPOSED

My family has ties to Monroe and the surrounding valley area that span 90 years. Upon graduation from Washington State University in 1956 with a degree in Agriculture, I spent 35 years with a national food organization in various and increasingly responsible management positions until my retirement in 1991.

As property owners since 1983, my wife and I have seen significant growth and changes in the City of Monroe and the Fire District #3. We have seen your Fire Department grow from a dedicated responsive volunteer organization, to a more organized team of volunteers and paid professionals providing our community with the full range of medical and firefighting services.

For the past one and one-half years, I have served as an appointed Fire Commissioner of Snohomish County Fire District #3, learning the needs of and demands on your Fire Department.

I believe I can assist in insuring your Fire Department meets citizens needs in the future and ask for your support and vote.

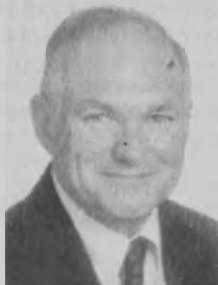
CAMPAIGN MAILING ADDRESS: 21010 195 AV SE, Monroe, WA 98272 PHONE NUMBER: (360) 794-1677

Fire Protection District No. 4 Commissioner



P
O
S
I
T
I
O
N

1



**John
McCLINTOCK**

UNOPPOSED

Fire District #4 fire department has always been in the forefront when it comes to training and equipping their firefighters - both full time and volunteers.

I plan to continue to work with the other commissioners and chief of our department to further enhance their pattern of activity.

CAMPAIGN MAILING ADDRESS: P.O. Box 525, Snohomish, WA 98291 PHONE NUMBER: (360) 568-4292



Fire Protection District No. 7 Commissioner

P
O
S
I
T
I
O
N
1



**Gregg
KNAPP**

I am an 18 year resident of Fire District 7 and a recently retired police officer. My work duties included that of Leads Coordinator for the SnoKing Arson Task Force. My arson investigation work led to the arrest of serial arsonist Paul Keller. I am very proud to have received the individual excellence award from the SnoKing Arson Task Force, as well as awards from Presidents Clinton, Bush and Reagan.

As an arson investigator, I worked closely with numerous Fire Districts, including District 7. Fire District 7 is a very professional, highly motivated fire department. I am proud to be endorsed by the fire fighters of our district. With the rapid growth of our community, it is vital that our fire department meet the increased demands for its services.

In managing District 7's budget I will ensure our fire department has the best training and equipment, while spending tax dollars wisely. My experience in the budget process, training, and procurement of equipment for a Fire Marshall's Arson Investigation unit gives me the vision to help our district protect its growing community.

As an advocate for the taxpayer, I will bring a new voice for responsible use of our tax dollars.

CAMPAIGN MAILING ADDRESS: 3218 199 PL SE, Bothell, WA 98012 PHONE NUMBER: (206) 481-5203



**Gunther
HAUSMANN**

The citizens of Fire District #7, is the number one priority after twelve years as your Commissioner. With a background as a fire fighter/paramedic, and Commissioner, I am well suited to serve you and the fire district for another six years.

Since my election in 1983, Fire District #7 has developed two new fire stations, purchased seven new fire apparatus, and started a paramedic service. In addition the district enjoys an insurance rating of 5, thus lowering your fire insurance premiums, and all WITHOUT BOND LEVIES.

In addition as a board member, I have been working hard with surrounding fire districts to consolidate services, and to make your tax dollar go even further, and with a blend of volunteer, resident, and paid fire fighters and including an outstanding administrative staff, this allows Fire District #7 to deliver superior fire and emergency services.

When you dial -911-, you expect the best money can buy, YOUR VOTE for Gunther Hausmann, will be a vote to continue to deliver such a high quality of service.

CAMPAIGN MAILING ADDRESS: 14311 206 ST SE, Snohomish, WA 98290 PHONE NUMBER: (206) 481-0926

P
O
S
I
T
I
O
N
5



**Alicia
WHITESIDE**

When I became a District resident 22 years ago, this District was an all volunteer fire department with a small budget. But no longer. The District population has grown enormously, so has the need for fire services and with it, the monies needed to provide such services. As the growth continues, so must the necessary and proper training for firefighters. The District residents put their trust in the hands of these professionals, that they will provide the necessary life and property protection in a safe and effective manner when responding to an alarm at a moments notice.

The duty of fire commissioner should be one that encompasses not only the implementation of policies and procedures for the District, but also foresight for its future needs. This foresight requires a sensible approach and business experience, I have both. With a strong business, accounting and managerial education and experience, I can assist the board in accomplishing its goals. The District must remain penny wise and not dollar foolish in this economy, but always striving for the best life and property protection that your tax dollar can buy.

CAMPAIGN MAILING ADDRESS: 18332 Snohomish AV, Snohomish, WA 98290 PHONE NUMBER: (360) 668-1217



**Roy
WAUGH**

In 1972, after receiving a BS degree from C.S.U., my wife and I moved to the Northwest to further our education, build our future, and raise our family. I have been successful in attaining these goals because of a positive work ethic, strong family values, and community involvement.

I have been a Firefighter/Paramedic for the Seattle Fire Department for 23 years bringing fire and emergency medical service experience to District #7. I have been involved for 16 years with the PTA of 3 local schools, 15 years coaching and administrating youth sports, 3 years as a boy scout leader, and 7 years on the SFD pension board.

I have been a resident of District #7 for 22 years and have served as a volunteer and commissioner. Six years ago, as fire commissioner, I began to help build a stronger and more efficient department to meet the increased demands of our district's growth. I have worked with my fellow commissioners for a comprehensive budget, apparatus replacement, and capital improvement plan.

My future goals are to achieve our current comprehensive plans through yearly budgets without special bond levies and to maintain our current level of excellence in fire and emergency medical services.

CAMPAIGN MAILING ADDRESS: 19309 34 DR SE, Bothell, WA 98012 PHONE NUMBER: (206) 481-8078

The above statements are written by the candidates, who are solely responsible for the contents therein.

Fire Protection District No. 8 Commissioner



P
O
S
I
T
I
O
N

1



**Daniel C.
JOHNSON**

I have lived in Fire District #8 for over 20 years and believe with my background in management and Emergency Services I have a lot to contribute to the successful operation of the District. I would like the opportunity to contribute something back to this community.

CAMPAIGN MAILING ADDRESS: 8200 8 ST SE, Everett, WA 98205 PHONE NUMBER: (206) 334-6138



**Henry L.
SMITH**

I was born in California in 1941. I began firefighting in 1959 and served 7 years as a full-time firefighter for Sacramento County. My wife, Edwina, and I moved our two children, Penny and Allen, to a home in King County in 1967. When I was hired into Boeing, we moved to Snohomish County where I joined Fire District #8. And throughout the years I've served in many capacities, from "rookie" to Battalion Chief. And I am still serving as a volunteer Fire Lieutenant-EMT at Station #2.

District #8 is growing in all areas. With this growth comes an increasing demand for service. It also increases the need of continuing education for our firefighters in Fire, Safety, Medical, and Rescue; with continuous updated training in each area. That coupled with the highest level of knowledge and expertise of its fire commissioners, District #8 is on the threshold of increased expansion. This expansion requires experience, knowledge and foresight in all the area's a Fire District functions. I believe with my fire service experience of 35 years, the offices I've held in this Fire District, and my position in the community, I am fully qualified to fill this most important position.

"THE RIGHT TO VOTE REGAINED..."

On November 8, 1910 Washington State voters (male voters) voted two to one in favor of the suffrage amendment to the state constitution.

Washington became the fifth state in the nation to allow women voting rights.

Washington State preceded by ten years the national suffrage ratification of 1920.





Fire Protection District No. 11

Commissioner

P
O
S
I
T
I
O
N
1



**James D. (Jim)
MILLER**

I have served Snohomish County Fire District #11 for the past four years as Fire Commissioner and this year as Chairman of the Board. As incumbent for District #11, I have had the satisfaction of seeing our district respond to the public's needs by upgrading and staffing Station #3 (Silver Firs); by initiating a new paramedic program (hiring 6 paramedics); and by purchasing new equipment (two, 1500 gpm pumpers, 1 new medic unit, 2 new aid cars, and 1 new mini-pumper). Having personally served as a volunteer firefighter, I have learned of the need for prudent spending of taxpayers dollars particularly in an area where there is little public concern until the "need" arises.

As conscientious voters concerned about continued, quality fire and aid protection in Fire District #11, I would appreciate your serious consideration of my candidacy for Fire Commissioner when you vote on November 7.

CAMPAIGN MAILING ADDRESS: 3308 112 ST SE, Everett, WA 98208 PHONE NUMBER: (206) 337-2371



**Brian
McMAHAN**

Making sure that the citizens have a say in the open public meetings and that there is a communication link to the public and employees of the fire district are goals of mine as Commissioner of Fire District 11. I would like to think outside of the box of the traditional fire district and look for more innovative and cost-effective ways to deliver the current services now provided. I believe that I can bring my experience as a fire officer to help improve the policies of the fire district for everyone from the citizens to all of the employees in the fire district.

I currently work for a fire district in King County with much growth. I can use the experiences at work and bring them to Fire District 11 and share both the positive and negative experiences, by saving valuable time and money for you, the taxpayer.

I have received endorsements by the International Association of Fire Fighters Local 2971, the Silver Lake Fire Fighters and Local 2878, King County 10 Fire Fighters. They have chosen me based on the ability to get the job done right. I hope you will also choose me as your candidate.

CAMPAIGN MAILING ADDRESS: 11633 8 AV W, Everett, WA 98204 PHONE NUMBER: (206) 355-3572

Fire Protection District No. 16 Commissioner



P
O
S
I
T
I
O
N
1



**Steve
HOAG**

Steve Hoag (a.k.a. Otis Q. Buckwheat) has been a District 16 firefighter since 1981, demonstrating his leadership abilities as a Captain from 1984 until becoming Commissioner this year. His hands-on experience as a volunteer ensures that his decisions as Commissioner are appropriate for a rural volunteer district.

If you don't recognize Steve's name, he's also known to many of his friends and neighbors as Otis Q. Buckwheat, a nickname he picked up as a young scout at local Boy Scout Camp Brinkley.

Steve has been employed by Bayliner Marine for 18 years. For the past 15 years he has managed the Parts Division, achieving consistent profitability while garnering recognition for superior customer service. As Fire Commissioner, he applies his professional management experience to the business of running our Fire District.

As a longtime resident of District 16, Steve's commitment to the community is well known. Active in the Fire Department Auxiliary since 1981, he has served as President for the past 10 years. He has helped in many fund-raising campaigns on behalf of the volunteers, local food banks and many other local causes.

Steve is committed to providing the best value in Fire and Aid service for your tax dollars.

CAMPAIGN MAILING ADDRESS: 1429 Lake Roesiger DR, Snohomish, WA 98290 **PHONE NUMBER:** (360) 568-6297



**Oden
OLSON**

I have been involved in the fire service for 12+ years, many of which I was a volunteer firefighter, and for the last 5 years as a professional firefighter.

My experience as a professional firefighter and co-chairman of the Apparatus Committee, gives me first-hand knowledge of acquiring fire apparatus and firefighter safety equipment. This knowledge keeps me up-to-date with all the NFPA and state regulations for firefighter safety. I would use this experience and knowledge to benefit the Lake Roesiger community. I have great respect and admiration for the men and women who volunteer their time to the community, and desire to help them by providing them with good leadership at the commissioner level.

CAMPAIGN MAILING ADDRESS: 9310 Woods Creek RD, Monroe, WA 98272 **PHONE NUMBER:** (360) 794-3641

"SHE AROSE AND REFORMED A NATION..."

Washington women proved to be "quick studies" in the art of politics. Their lobby efforts were successful in implementing social reforms such as abolition of child labor, pure food laws, support for public libraries and public kindergartens, etc.

Washington in 1911 became one of the first states to pass legislation for an 8 hour work day for women.

Women who strove through the vote to better the lives of those within their community, then as now, work toward equal pay for equal work and the advancement of women in both the political and business arena.



"No Vote Means No Remedy for Long Hours and Short Pay" -Mary Taylor, cartoonist



Alderwood Water District Commissioner

LOCAL FOCUS: Alderwood Water District is located in Southwest Snohomish County and provides water and sanitary sewer service to an area encompassing 60 square miles. The District serves 29,100 water and 16,300 sewer customers and is governed by a three-member Board of Commissioners, each elected for a six-year term.

P
O
S
I
T
I
O
N
1



**Lance F.
NORTON**

Six years ago I ran for this office because I wanted to do something for my community. I wanted to be involved, yet without being a politician.

I knew nothing about being a water and sewer commissioner except to try to provide pure water and sanitary sewer service at the most reasonable cost. I was soon to learn there was much more to this job. The first two years of my term, I spent most of my time watching, listening and learning. During the last four years of my term I have been honored by my fellow commissioners to serve in the position of President of the Board.

Much has been accomplished in the Alderwood Water District. We have implemented a low-income senior citizen discount for water and sewer, brought on-line a modern more efficient computer system, and implemented an Employee of the Year recognition program. We are currently constructing a new Maintenance and Operations facility which will be paid for not through a rate increase but from our capitol projects budget. Much remains to be done. I thank you for the opportunity to have served the past six years and I ask for your vote for my re-election.



**Paul (Mac)
McINTYRE**

Paul McIntyre is the best qualified candidate for Alderwood Water District. Paul has first-hand knowledge of water and sewer district operations. Paul's 17 years in the utility business qualify him for the job. Paul's education and experience has shown him many efficient ways to manage and operate utilities. Paul would like to bring this expertise into our community. Paul's education, certification and experience include: • Utility Supervisor for the City of Lynnwood • Degrees in Construction and Professional Management • Certified Water Operations Manager with the State of Washington.

Paul has lived in the South Everett area most of his life. After his enlistment in the service Paul and his wife returned to this area where they are raising their two children.

Paul is concerned about growth and its effects on our water supply. With his experience in the water industry, Paul can insure that the ratepayer is well represented at water quality, supply and rate discussions. Paul will insure that water will be of high quality, affordable and available - now and in the future.

As a commissioner, Paul will work for stable rates, sound management policies and ethical behavior. We need Paul McIntyre on the Board of Commissioners.

CAMPAIGN MAILING ADDRESS: 3624 Upland, Everett, WA 98203 **PHONE NUMBER:** (206) 347-3565

Cross Valley Water District Commissioner



P
O
S
I
T
I
O
N
1



**Corinne R.
HENSLEY**

Education: High School - Lewis & Clark, Spokane; College - Washington State University, Bellevue Community College, Shoreline Community College, University of Washington - BS General Studies.

Occupation: Housewife, mother.

Professional Qualifications: Science Degree specializing in Environmental Sciences, focus on: Geology, Conservation and Public Policy; Volunteer Consultant for Nonprofit organizations.

Personal Information: Active in Growth Management Issues; water conservation; enjoy working with people; teaching children; active volunteer on County issues.

Community Involvement: Cross Valley Water District, Citizen Advisory Committee; Rural Forum - County Growth Management Rural Citizen Advisory Committee; Branch Campus University of Washington, Relocation to Truly Farm, Bothell.

CAMPAIGN MAILING ADDRESS: 14241 NE Woodinville-Duvall RD, #274, Woodinville, WA 98072 **PHONE NUMBER:** (206) 486-6811



**Arthur J. (Art)
SIGURDSON**

As a Commissioner and trustee of Cross Valley Water I have seen this district grow from 1400 hook-ups to about 5000. This represents about 15,000 people, man, woman and child.

I have strived to keep the district streamlined and efficient. I am proud to say that the district has some of the best and purest water in the Puget Sound Basin.

Water cannot be taken for granted any longer. We need to look and plan 10 to 30 years in the future so that we can continue to have the water quality and supply that we are accustomed to. Future generations are entitled to what we had when we arrived in this area.

With your vote I will continue the work I have been doing.

"IT'S A DIRTY JOB, BUT SOMEONE NEEDS TO DO IT..."



LOU ROGERS

"Municipal housekeeping means adventure and romance and accomplishment to me. To be in some degree a guiding force in the destiny of a city, to help lay the foundation stone for making it good and great, to aid in advancing the political position of women..."

-Bertha Knight Landes
Mayor of Seattle, 1926

(first woman mayor of a major American city)

"From Force of Habit She Will Clean This Up"
-Lou Rogers, cartoonist



Silver Lake Water District Commissioner

P
O
S
I
T
I
O
N
1



**Rod
KEPPLER**

I was born and raised in Everett, graduated from Everett High School and served in the U.S. Army. Upon completion of my military service, I returned to Everett and attended Everett Community College. During that time I started a business which I owned and operated in Everett. In the mid 1970's, I began a career in real estate which I still enjoy today. MariLou and I moved to the Silver Lake area in 1966 and raised our family here. For years I was involved in youth sports including coaching boys and girls baseball and soccer.

I was elected Silver Lake Water Commissioner in 1977 and have served continuously for the last 18 years. I was also elected Fircrest Sewer Commissioner and was instrumental in merging the two districts together creating a large savings thru increased operational efficiencies while providing sewer availability to most of the Silver Lake area. As a commissioner, I have been diligent in requiring developers to pay their share of costs, allowing for the lowest rates possible while maintaining a top-notch water/sewer district.

As a commissioner, I will continue working to ensure high quality water/sewer service at the lowest rates possible.
CAMPAIGN MAILING ADDRESS: 3719 108 ST SE, Everett, WA 98208 PHONE NUMBER: (206) 337-0325



**Charles F.
ROMANUS**

Water is one of the most important resources available to the people of Silver Lake Water District. As Commissioner, I will see that our District continues to provide high quality service while positioning itself for the future by addressing four areas: 1) Ensure safe and adequate water supplies exist to support existing development and planned growth. 2) Provide high quality water supply at all times. 3) Ensure adequate sewage treatment and disposal is available to protect our water resources. 4) Provide service for cost-effective rates.

As Commissioner, it is my intention to: a) Plan for the future. Consider growth and ensure that we have the necessary water resources. b) Provide a water transmission system; the mains, service connections, and storage facilities are top-notch. c) See that our sewer system is designed to protect the public health, serves our existing needs, and allows for future expansion. d) See that these services are provided at a fair cost. We must take advantage of automation, provide the district staff with quality training, and we must have the necessary maintenance equipment and personnel to sustain the system.

I look forward to serving you as Commissioner.

CAMPAIGN MAILING ADDRESS: 2327 137 PL SE, Bothell, WA 98012 PHONE NUMBER: (206) 338-4314



Lake Stevens Sewer District Commissioner

P
O
S
I
T
I
O
N
1



**Jim
MITCHELL**

Jim Mitchell, lifetime resident of Lake Stevens, former State Representative and former owner of Mitchell's Pharmacy will seek a second term as Lake Stevens Sewer District Commissioners, Position 1.

Thirty years ago, in an effort to protect Lake Stevens from further pollution, Mitchell helped form the Lake Stevens Sewer District. He would like to continue serving on the board in order to complete the current projects under consideration.

Our Lake is our greatest asset and each and everyone of us must do everything in our power to help protect our habitat. I believe that it is important that the Lake Stevens Restoration Committee, the Lake Stevens Drainage District, the City of Lake Stevens and the Lake Stevens Sewer District continue to work together in a joint effort to improve the quality of our Lake.

The Lake Stevens Sewer District's ongoing mission is to provide and maintain affordable sewer service to the citizens of the District at a level that is in keeping with the need to protect our surrounding environment.

CAMPAIGN MAILING ADDRESS: 1015 Stich RD, Lake Stevens, WA 98258 PHONE NUMBER: (206) 334-1830

UNOPPOSED

Monroe Park & Recreation District Commissioner-at-Large



P
O
S
I
T
I
O
N

1

No
Photo
Submitted

Candidate did not submit a statement.

**Tom
TEIGEN**

UNOPPOSED

P
O
S
I
T
I
O
N

4

No
Photo
Submitted

Candidate did not submit a statement.

**Kean
PEARSON**

No
Photo
Submitted

Candidate did not submit a statement.

**Vincent
PORTULANO**

P
O
S
I
T
I
O
N

5

No
Photo
Submitted

Education: B.S.L.A. (Landscape Architecture).

Occupation: Landscape Architect.

Personal Information: Married to Ken, with two children, Becky (5 1/2) and Sam (3 1/2).

Candidate's Statement: I am not interested in politics, I just hope I can help out. I have held an interim position since this spring and feel we have a productive team - please give us your vote of confidence!

**Stacy Thomas
WINNICK**

UNOPPOSED

The above statements are written by the candidates, who are solely responsible for the contents therein.



Snohomish County Charter Review Commission

Snohomish County's home rule charter was drafted by elected citizen freeholders in 1979-80 and subsequently approved by voters. The charter is the county constitution, outlining within the parameters of the state constitution and state legislature the powers and organization of county government. The charter calls for its review every 10 years with the last review taking place in 1985-86.

The Charter Review Commission consists of three individuals elected from each of the five county council districts. This fifteen member commission is then responsible for reviewing the charter to determine its adequacy and suitability to the needs of the county. Ultimately, the commission proposes amendments to the charter that in 1996 will be submitted for a vote of the people at the General Election.

D
I
S
T
R
I
C
T
1



**Gene L.
CHASE**

I was born and raised in Snohomish County. Educated at Everett High (1963), Everett Junior College (1965), and University of Washington, B.S. Forestry (1967). Activities include: 14 years Arlington School Board, 7 years Fire District Commissioner and 9 years Cascade Valley Hospital Advisory Board.

Now is the time to look and analyze where Snohomish County Government is going with regards to structure. We must see what to do with the charter regarding positions whether they be elected, appointed, partisan or nonpartisan. We must also address the issue of how the government agencies function with the council executive, etc.

CAMPAIGN MAILING ADDRESS: 21705 88 DR NE, Arlington, WA 98223 PHONE NUMBER: (360) 435-1177



**John
WYNNE**

The County Charter authors, in their wisdom, provided for periodic reviews, by an elected citizen's commission. The commission must hold public hearings within each council district. Power must rest with the people and their elected officials, not unresponsive bureaucrats. This power imbalance must be addressed.

The Charter preamble refers to "**We, the citizens**" providing "for a responsible and responsive county government." As a former State Representative, businessman, trained mediator, and progressive community leader, I look forward to working with the citizens of Snohomish County to bring back county government that is accountable and accessible **to the people, not the bureaucrats.**

CAMPAIGN MAILING ADDRESS: P.O. Box 954, Lake Stevens, WA 98258 PHONE NUMBER: (206) 334-2348



**Keith
WILSON**

The Charter writers wisely built in an automatic review process. Our Charter must stay current with the times in which we live. My goal will be to bring to the voters the necessary changes the Commission believes are needed. We should not make changes effecting special interest groups, but only those that are beneficial for all.

I'm the former Snohomish County Superior Court Administrator, former member State Board of Education, retired Fire Chief, and attorney. I'm familiar with the charter. I have the knowledge, energy and time. I would appreciate your support.

CAMPAIGN MAILING ADDRESS: 4020 172 ST NW, Stanwood, WA 98292 PHONE NUMBER: (360) 652-7064

The above statements are written by the candidates, who are solely responsible for the contents therein.

Snohomish County Charter Review Commission



D
I
S
T
R
I
C
T

1

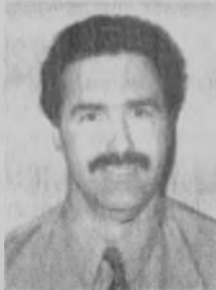
C
O
N
T
I
N
U
E
D



**Hiram S.
WILBURN**

It is this candidates opinion that the biggest and most damaging problem which the Citizens of this County, State and Nation have is the excess of Civil Servants, and or people on some level of government payroll. This with their medical, vacation and retirement plans along with their make-work rules and regulations for the working people, creates a large and unnecessary financial burden. It is suggested that our elected officials, with a committee of non-government employees, define a minimum government which includes only essential services, which the voters can approve. This could eliminate approximately 72% of governments payroll.

CAMPAIGN MAILING ADDRESS: P.O. Box 43, Granite Falls, WA 98252 PHONE NUMBER: (360) 691-5119



**Michael
McCREARY**

I helped organize the "Pro Snohomish County" movement, founded to prevent the costly development of an entire new County Government.

I believe the citizens of Snohomish County spent many years developing our present system of government and any changes to our Charter should be thoroughly considered and discussed, because they will have far-reaching consequences.

I strongly support SCRAP; and wish to maintain the rural character of North County.

I am married, have two children, was raised on a dairy farm, and work as a cost analyst in the aviation industry.



**Gene F.
MILLER**

Gene Miller has 18 years experience working for the County and is better prepared than most to deal with the issues and conflicts that result from its structure. The County budget has gone from forty to four hundred million dollars and the size of government has tripled in the last 14 years. Most of this unnecessary growth is directly attributable to the change from a Commissioner to Executive form of government. The form of County government needs to be reconsidered and addressed by the Charter Review Committee. Gene is familiar with the real issues and the ways to deal with them.

CAMPAIGN MAILING ADDRESS: P.O. Box 3366, Arlington, WA 98223 PHONE NUMBER: (360) 652-8900



**Phillip
MILLARD**

I've lived in Snohomish County most of my life; grown as it has grown. Since I've chosen to raise my family here, I have an abiding concern for how county government will meet challenges it will face in the future. As a citizen with an investment in this county, I feel a sense of responsibility to help improve our government.

Having successfully worked at resolving problems and developing policies in a business environment provides me with experience a Commission member would need to address issues we are likely to face; I'd look forward to helping make our government more responsive.

CAMPAIGN MAILING ADDRESS: 1917 66 PL NE, Marysville, WA 98271-9135 PHONE NUMBER: (360) 653-6100



Snohomish County Charter Review Commission

D
I
S
T
R
I
C
T

1

C
O
N
T
I
N
U
E
D

No
Photo
Submitted

Candidate did not submit a statement.

**John W.
MORRISON**

No
Photo
Submitted

I have lived in the Lake Stevens area for 16 years. In that time I have seen "rural" become "suburban." I have seen farm lands become housing tracts because it was easier to sell out than to pay even higher taxes.

I have seen forest lands turn into asphalt meadows, because a renewable resource held less value than a house built to last only 20 years.

If elected I will do my best to strengthen the G.M.A. so that we can keep our cities, cities and the country, country.
CAMPAIGN MAILING ADDRESS: 13800 Getchell RD NE, Lake Stevens, WA 98258 PHONE NUMBER: (360) 659-7252

**David
MacFARLANE**



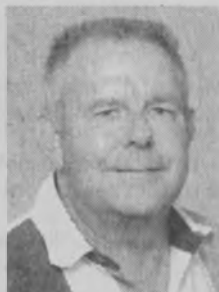
The average voter needs a voice on the Charter Review Commission who will be a strong proponent of individual responsibility and property rights.

Government has lost touch with the average citizen. Trust can be restored by providing more accountability and accessibility to government at the local level.

As your representative, I will support strong citizen oversight of the county's tax and spending policies. I will oppose attempts to abridge the right of citizens to petition their government. I will work to ensure that county officials will continue to be elected, not appointed by the county executive as some have suggested.

CAMPAIGN MAILING ADDRESS: 7920 123 AV NE, Lake Stevens, WA 98258 PHONE NUMBER: (360) 659-1381

**Ross R.
MARZOLF**



**Leo A. (Buz)
MUNN**

Born December 7, 1936 in Granite Falls, Washington. Graduated Granite Falls, High School - 1955. Attended Everett Community College 1979 studied Community Planning and Zoning. Attended Peninsula College Port Angeles 1980 studied Real Estate Law.

Founded MUNN LOGGING, Company 1964 Inc. in 1976, I have worked for Munn Logging, Inc. from 1964 until 1995.

I believe in a small efficient County Government of the people by the people and for the people.

CAMPAIGN MAILING ADDRESS: P.O. Box 629, Granite Falls, WA 98252 PHONE NUMBER: (360) 691-6341

The above statements are written by the candidates, who are solely responsible for the contents therein.

Snohomish County Charter Review Commission



**Joe
HEINECK**

Many are critical of Snohomish County government, especially in land use and environmental issues. As a longtime farmer and engineer, I feel that property rights and the environment can be balanced.

Some of the criticism can be addressed by re-examining the charter. For example: • Powers not otherwise granted should be reserved for the people. • Clarify the Referendum. One person should not be able to stop county government. • Appoint some executive department heads, for better accessibility, accountability and teamwork?

With your support, I will: • LOOK at other counties. • LISTEN to voters and other Commission members. • APPLY COMMON SENSE to the charter.

CAMPAIGN MAILING ADDRESS: 930 Sunnyside BV, Everett, WA 98205 **PHONE NUMBER:** (206) 334-6100



**Roberta
HANSON**

As a longtime resident of Snohomish County, I am looking forward to the opportunity and challenge that participation on the charter review committee will provide. As a member of your review committee I will help evaluate the expectations and achievements of the last ten years and use that information to plan for Snohomish County's future.

We are assured that change is constant, however, we need the change to be beneficial for all of the residents we represent. My former experience as a Stanwood Councilman and current interests and experience in the community will help me achieve your goals.

CAMPAIGN MAILING ADDRESS: P.O. Box 3422, Arlington, WA 98223 **PHONE NUMBER:** (360) 652-3272



**Steve
DEAN**

Community Service: I've led the successful effort to create Robe Canyon Historic Park near Granite Falls, organized volunteers to improve Snohomish county trails for four years, and served as vice-chair of the Rural Forum. I'm a founding member and past chair of the Stillaguamish Citizens' Alliance (SCA), and a current director of SCA and Volunteers for Outdoor Washington.

Background: CPA; accounting manager for Arlington company; former logger and forest fire fighter. Reside with wife, Nancy, near Stanwood.

Education: B.A. - Business Administration/Accounting - UW, 1984.

Goal: Our charter should provide for a government of the people, not government controlled by a vocal minority and special interests.

CAMPAIGN MAILING ADDRESS: 8082 Wayne AV NW, Stanwood, WA 98292 **PHONE NUMBER:** (360) 652-7181



**Dale R.
SMITH**

For thirteen years I have been an unpaid political activist trying to get Snohomish County's, drastically flawed, Home Rule Charter to work. It can be repaired by either going back to the commissioner form of government or make major changes to the current charter. I know what needs to be done to fix it and how to go about implementing the changes. If elected, I will direct all my energies to giving you a workable charter that dictates a less expensive Government with total voter involvement. I cannot, however, do this alone I will need your help.

CAMPAIGN MAILING ADDRESS: 14411 66 AV NW, Stanwood, WA 98292 **PHONE NUMBER:** (360) 652-3360



Snohomish County Charter Review Commission

D
I
S
T
R
I
C
T

1

C
O
N
T
I
N
U
E
D



**Dave A.
SHULTZ**

How Citizens, Neighborhoods, Communities, and County Government manage growth and development is the most significant factor regarding any chance of retaining the quality of life and the rural atmosphere we currently enjoy in North Snohomish County. I've lived thirty years in North Snohomish County, and I would like to work cooperatively to suggest and promote change to the County Charter that enables and requires County Government to embrace these priorities; improving the quality of life for individuals and families, providing services and infrastructure that promotes responsible growth and development, and a government that responds to the priorities of its citizens.
CAMPAIGN MAILING ADDRESS: 7626 Stauffer RD, Stanwood, WA 98292 PHONE NUMBER: (360) 629-3592



**Thom
SATTERLEE**

I am Thom Satterlee and I live east of Arlington with my wife, daughters, granddaughter and mother-in-law. We have lived in Snohomish County for the better part of 22 years.
As a Marine in Viet Nam, I learned how interdependent we are upon one another and our environment; and that individuals have a duty to insure responsible government for their country, their community and each other.
I will represent the rural interests and concerns of our councilmatic district and recommend changes that will improve the county's ability to serve all of us. Call (360) 436-1044 with your questions, concerns and ideas.
CAMPAIGN MAILING ADDRESS: 40520 E Whitehorse DR, Arlington, WA 98223 PHONE NUMBER: (360) 436-1044



**Jeff
BEAUCHAMP**

As an Eagle Scout I feel it is time for my generation to acknowledge its debt to our community. I believe county government needs to adapt to the twenty-first century by becoming more efficient, while still being able to respond to the needs of its citizens now and in the future.
CAMPAIGN MAILING ADDRESS: 8202 47 AV NE, #A, Marysville, WA 98270 PHONE NUMBER: (360) 659-2958



**Howard
BARROWS**

I was born, raised, educated and employed in Snohomish County. Over this time I have seen the quality of life deteriorating, citizens losing their property rights and increasing confusion as to the direction Snohomish County will go in the 20th century.
I hold strong convictions about the rights of the individual and limitations of government as defined by the 10th amendment. I look forward to serving my county as a charter review member.
CAMPAIGN MAILING ADDRESS: 4411 92 ST NE, Marysville, WA 98270 PHONE NUMBER: (360) 653-3914

The above statements are written by the candidates, who are solely responsible for the contents therein.

Snohomish County Charter Review Commission



DISTRICT 1



**Greg
TISDEL**

Cast your vote for Charter Review Commission for Greg Tisdel. His top priorities for the Charter are to ensure that our County will be able to continue fighting crime, keeping taxes low, and ensuring our quality of life. Greg Tisdel is an independent voice who will make sure our county's Charter gives us the kind of Snohomish County government we deserve. Greg Tisdel is a small businessman in our community who provides family wage jobs and wins awards for his environmentally sound practices. Make the right decision for our community's future. Vote Greg Tisdel for Charter Review Commission.

CAMPAIGN MAILING ADDRESS: P.O. Box 131, Silvana, WA 98287 PHONE NUMBER: (360) 652-0941

CONTINUED



**Rosanne
ROCKWELL**

I am a Journeyman Electrician. Just an ordinary working person. The charter review commission is a way for average citizens like you and I to become involved and to have a voice in our future. So many times we complain about government and do nothing about it. This is our (the average working person's) chance to get involved and make a difference for our future. I have been involved in trying to make our state and county the best place to live since making it my home three and a half years ago after moving here from the Philadelphia area.

CAMPAIGN MAILING ADDRESS: 7929 Grandview RD, Arlington, WA 98223 PHONE NUMBER: (360) 435-6454

Snohomish County Charter Review Commission



DISTRICT 5



**A. Lee
JONES**

B.S. Degree in Education with Early Childhood Endorsement, property owner in the city of Snohomish for eight years, citizen activist involved in several neighborhood/community organizations, including SCPN and PTA/PTO.

I intend to listen to all points of view and make informed decisions based on all input, and these three principles: 1) Will the decisions serve the best interests of my constituents? 2) Will the decision be fair to all? 3) Will the decision be as valid in the future as it is today?

"Electeds are accountable" to constituents. Therefore, I will ensure positions are by public vote.

CAMPAIGN MAILING ADDRESS: 416 Avenue F, Snohomish, WA 98290 PHONE NUMBER: (360) 568-4477



Snohomish County Charter Review Commission

D
I
S
T
R
I
C
T

5

C
O
N
T
I
N
U
E
D



**Cynthia
CHADWICK**

Hello - My name is Cynthia Chadwick. I'm a single parent raising five beautiful children. I've lived in Monroe since 1987. Being born and raised in the Northwest and having spent numerous family excursions to Monroe, I've witnessed its steady growth over the past thirty years.

I'm actively involved in my children's schools and encourage the parent-teacher alliance so important to maintain productivity. Keeping our children goal-oriented and interested in learning, increases self-confidence and self-esteem. I applaud the police department and the DARE Program for their relentless effort to combat the war on drugs.

CAMPAIGN MAILING ADDRESS: 16413 162 DR SE, #A, Snohomish, WA 98290 **PHONE NUMBER:** (360) 794-0932



Resident of Snohomish County since 1977, community activist since that time. Worked on North Creek Comprehensive Plan. Active in growth management issues, serving on the Southwest County GMCC and the Rural Forum, chair of two civic organizations, I have a deep concern for effective county government, and have had extensive experience working on county ordinances.

I feel it is important to approach charter review with an open mind. The commission will have a year to study the charter for possible changes. The interchange of ideas is the important part of the process, including citizen input through public testimony.

CAMPAIGN MAILING ADDRESS: 4620 156 ST SE, Mill Creek, WA 98012-4720 **PHONE NUMBER:** (206) 743-7213

**Jane W.
COOPER**



**Jim
CUMMINS**

"Adopted and revised by a vote of the people." The most important issue that will impact our lives for the next ten years. The review commission must listen to the people, define the issues and place the proposed amendments on the November ballot.

I pledge to listen and work as a team member to define the issues for placement on the ballot for a vote of the people of Snohomish County.

My experience as a Navy Korean Veteran, teacher, community college administrator, labor leader, with political campaigns and many civic organizations, give me the leadership skills to serve you well.

CAMPAIGN MAILING ADDRESS: P.O. Box 512, Monroe, WA 98272 **PHONE NUMBER:** (360) 794-1171



Candidate did not submit a statement.

**Scott
WESSEL-ESTES**

The above statements are written by the candidates, who are solely responsible for the contents therein.

Snohomish County Charter Review Commission



**Chuck
PETERSON**

Scoop Jackson once said *"the best politics is no politics."* The charter review is not about individual agendas. It is about hard work and the opportunity for citizens to make local government accountable and cost-effective.

Serving on the commission is a privilege. My experience helping citizen groups participate in county decision making, evaluating public policies as a private-sector analyst, and my UW master's degree in public administration would be an asset in evaluating changes to the charter, our county's constitution.

If elected, I will promote citizen participation, listen to all perspectives, and make recommendations that serve all residents.

CAMPAIGN MAILING ADDRESS: P.O. Box 1034, Snohomish, WA 98291-1034 PHONE NUMBER: (206) 337-1961



**Bill (Hardware)
PATRICK**

Most elected offices should not have term limits. The county executive should be limited to one term. Why? The executive spends too much thought planning how to get the 2nd term.

My efforts to have the road to French Creek in use (created in 1903) have been unsuccessful because of Bob Drewel's timidity. The road has not been vacated. Hunters, horsemen, fishermen, bird watchers, etc., are deprived of their rights established in 1903.

I am a mature twice arsoned businessman hoping by being on the charter review board we can make a better future. My picture broke the camera.

CAMPAIGN MAILING ADDRESS: 160 Pine AV, Snohomish, WA 98290



**Steve
HIGGINS**

The charter is extremely important to determine the balance of power between public officials and the public. Our existing county charter has served us well over the past fifteen years. Only minor revisions are needed. This document gives individual citizens the right to directly participate in the legislative process by referendum and initiative. This process forces government officials to be accountable for laws they create.

Requirements for filing referendums should be stringent enough to weed out insincere "monkey-wrenching" of important legislation.

The right to referendum should never be taken away from the taxpayers and voters of Snohomish County.

CAMPAIGN MAILING ADDRESS: P.O. Box 551, Monroe, WA 98272 PHONE NUMBER: (360) 794-8446



**Colleen
HIGBEE**

For 17 years I have enjoyed a quality of life that is unique to Snohomish County. During that time I have witnessed tremendous change. The next 10 years are crucial years. We need to find the balance that will ensure our citizens a high quality of life and will maintain economic stability throughout the county.

I am pleased to participate in the charter review process. I believe you will benefit from my ability to listen objectively to all citizens and to assimilate what I hear.

CAMPAIGN MAILING ADDRESS: 18033 129 PL SE, Snohomish, WA 98290 PHONE NUMBER: (360) 794-6154



Snohomish County Charter Review Commission

D
I
S
T
R
I
C
T

5

C
O
N
T
I
N
U
E
D



**Darrell R.
HARTING**

As a "SUEE" (the County sued 35 of us because we wanted YOU to be able to vote on County Policy), I aim to strengthen individual and property rights, protect our right of Initiative and Referendum, modernize and limit the size and power of County government, and clearly define its responsibilities and authority.

Experience as a Professional Engineering Manager included restructuring two international technical societies, Boeing Research and Development activities, and the Snohomish County Property Rights Alliance.

My many years of technical and managerial experience (five spent dealing with County Government) will help make the Charter work for YOU, the People!

CAMPAIGN MAILING ADDRESS: 115 3/4 W Main ST, #208, Monroe, WA 98272 **PHONE NUMBER:** (360) 805-9027



**George W.
HUFF**

I started life in Snohomish, Graduated from Snohomish High School, served in the Navy in WW2, a councilman ten years for Snohomish, and worked for Boeing as an Electronic Technician/Engineering Supervisor.

The County Charter is an instrument, for the people: I am concerned that there are problems with that premise. I want to be a part of the Charter Review to listen, debate, and help form a peoples Charter.

Diversity must be addressed to give people fair representation for pursuit of life, with a minimum of intrusive government.

Vote George W. Huff - for the peoples rights.

CAMPAIGN MAILING ADDRESS: 12222 Robinhood LN, Snohomish, WA 98290 **PHONE NUMBER:** (360) 794-0183



**Ed
HUSMANN**

The Washington State Constitution clearly states in Article 1, that all political power is inherent in the people and that the powers of the government come from the consent of these same people.

The Snohomish County Charter is the tool by which the citizens of this county can maintain accountability of our local government. It is both the right and responsibility of the citizens to insure that both our elected and non-elected officials are in fact acting in accordance with the will of the people. Please give your most serious consideration to whom you would elect to this commission.

CAMPAIGN MAILING ADDRESS: 13420 339 AV SE, Sultan, WA 98294 **PHONE NUMBER:** (360) 793-1996



**Herb
O'BRYANT**

The purpose of government is to provide tools for the community to achieve full potential. To serve. To use the natural and financial resources of the community to help people attain their fullest potential. I see many new challenges, and fields of opportunity in the future. I see the issues of land usage and growth as major concerns. There will be many challenges to the quality of life that we enjoy today. It is vitally important that we make the decisions of today that will protect and foster the quality of life for tomorrow.

CAMPAIGN PHONE NUMBER: (206) 337-5471

The above statements are written by the candidates, who are solely responsible for the contents therein.

Snohomish County Charter Review Commission



D
I
S
T
R
I
C
T

5

C
O
N
T
I
N
U
E
D



**Roger L.
FINLEY**

I have farmed in Snohomish County 31 years. I am: Married and a Grandfather, Korean War Veteran, active in Washington State Cattlemen's Association, Snohomish County Flood Reduction Committee, and other Agriculturally related activities.

I have spent the last couple of years defending the taxpayers right to Referendum.

I believe in a representative type of Government; I believe in our Constitution as it is written; I believe in clear lines of Responsibility and Accountability; I believe in Self-responsibility and equal opportunity; I do not believe in Social Engineering. Thank you.

CAMPAIGN MAILING ADDRESS: 32319 Mann RD, Sultan, WA 98294 PHONE NUMBER: (360) 793-1597



**Hans
DUNSHEE**

The job is simple: we need to make county government work better. We must make it more representative and more efficient.

Hans Dunshee is a former state legislator and county planning commissioner, and he has a master's degree in political science.

Hans says, "We can make government more responsive and do more with less."

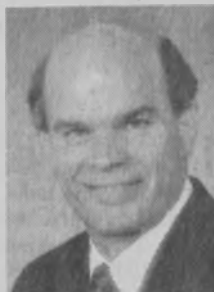
CAMPAIGN MAILING ADDRESS: 506 10 ST, Snohomish, WA 98290 PHONE NUMBER: (206) 338-7876



No
Photo
Submitted

Candidate did not submit a statement.

**James M.
ANDERSON**



**Art
SPRENKLE**

As a 22 year resident of Eastern Snohomish County, married father of three children, and having served six years in the Washington State Legislature, I believe I am well qualified for the work for the Charter Review Commission. Our County Government is constantly making decisions that have permanent impacts on our communities. It must be effective, responsive, and truly representative. It must insure that the unique needs of our area are not overshadowed by those of the more densely populated areas. Also, we must fairly balance the needs of the community with the needs and rights of the individual.

CAMPAIGN MAILING ADDRESS: 14430 176 PL SE, Snohomish, WA 98290 PHONE NUMBER: (360) 794-5465



Snohomish County Charter Review Commission

D
I
S
T
R
I
C
T

5

C
O
N
T
I
N
U
E
D



**Michael R.
STEPHENS**

Hello, my name is Mike Stephens. I am a 25-year resident of Snohomish County. My wife and I live in the Fobes Hill area near Snohomish.

The Charter Review Commission will make important recommendations for change in the county government "constitution." Our county is experiencing exceptional growth. To insure healthy growth, government must be an active partner. Being a partner though doesn't mean being an impediment to progress, nor does it mean rubber stamping the will of a few.

I commit to you to be a voice of reason if selected as a Charter Review Commission member.

CAMPAIGN MAILING ADDRESS: 6233 65 DR SE, Everett, WA 98205 **PHONE NUMBER:** (206) 334-4712



**Bill
BARNET**

I am the only candidate for District 5 who lives in the Lake Stevens area. The southern part of Lake Stevens needs to be represented.

I served for 10 years on the Lake Stevens City Council, nine years as a councilperson and one year as council president.

I am currently employed as an educational consultant for Macmillan/McGraw-Hill Publishing Company. I previously served as a school principal for 10 years. I have also taught school. I have an earned Doctorate in Education.

I have been very active in various communities over the years.

CAMPAIGN MAILING ADDRESS: 801 Stitch RD, Lake Stevens, WA 98258 **PHONE NUMBER:** (206) 334-1395



**Jack
LOBDELL**

Retired attorney (1953-1986). Magistrate, North East District Court 1985-1988. Undergraduate degree, Stanford University (1949), law degree UW, (1953).

I have a comprehensive knowledge of the structures and functioning of government. I have never run for public office before.

I don't believe basic government structures should be torn apart to accomplish the purposes of the few. The charter should be reviewed and compared to look for greater efficiencies.

I am willing to work cooperatively with other commission members to achieve consensus on issues which might be in dispute. I am energetic and have sufficient time to devote to the difficult task.

CAMPAIGN MAILING ADDRESS: P.O. Box 916, Gold Bar, WA 98251 **PHONE NUMBER:** (360) 793-0282



**Lorraine
LUSCHEN**

The charter as written allows only 1 vote to disrupt a system, that is dictatorship, not democracy. Changes need to be made so that majority still rules. I will work towards that goal so that all elements of county government are accountable for their actions towards the citizens they represent as well as the people doing the same. The years of blaming one faction or another for wrongs in the system have to stop. Change is good for everyone and majority should rule. Referendum must be available to all citizens. I would like to be a part of this healing process.

CAMPAIGN MAILING ADDRESS: 21016 45 AV SE, Bothell, WA 98012 **PHONE NUMBER:** (206) 481-7719

The above statements are written by the candidates, who are solely responsible for the contents therein.

MAJOR POLITICAL PARTY CAUCUS AND CONVENTION PROCEDURES

In the state of Washington, candidates for most of the offices which appear on the state general election ballot are nominated at the state primary in September. The office of President is an important exception to this procedure. The candidates for President are nominated by the political parties at their national conventions -- based on the results of either the presidential primary, their own caucuses and conventions, or both.

The delegates to the national conventions are selected by the parties through the precinct caucuses, county or district conventions, and state conventions. Under national or state party rules, these national convention delegates may be bound or pledged to a particular candidate based on the number of votes that candidate receives at the presidential primary in this state. The following information is provided to familiarize Washington citizens with these essential caucus and convention procedures.

Delegates to the national nominating conventions of the major political parties from Washington are selected through a system of precinct caucuses, county or legislative district conventions, and finally, a state convention. The first step in this process is the precinct caucus, a neighborhood-level meeting open to all members of a particular political party. Precinct caucuses are held in each precinct of the state in the early spring of each presidential year. Individuals are elected from each precinct to attend the legislative district or county convention where the delegates to the state convention are chosen. The state conventions of the major political parties will, in turn, choose delegates for the national conventions at which the Presidential and Vice Presidential nominees are selected. Political parties may choose to base the allocation of delegates in whole or in part on the results of the presidential preference primary.

In addition to the selection of delegates, those persons attending party caucuses and conventions have the opportunity to determine the party platform, vote on resolutions and meet party candidates for a variety of local, state and national offices.

DATES OF PRECINCT CAUCUSES AND CONVENTIONS

	Democrats	Republican
Precinct caucuses	March 5, 1996	March 5, 1996
County conventions	April 13, 1996	March-May 1996*
District conventions	April 20, 1996	March-May 1996*
State convention	June 1, 1996	May 30-June 1, 1996
Location of state convention	Seattle	Bellevue

*Information was not complete at the time this publication was prepared.

RULES AND PROCEDURES

Each political party has the authority under the United States Constitution and state law to adopt rules to govern the delegate selection process and other party activities which occur in conjunction with the caucuses and conventions. These party rules specify the number of delegates from each precinct to the county or legislative district convention, the number of delegates from each legislative district or county convention to the state convention, and the procedural rules for conducting the caucuses and conventions. A copy of the rules of either party should be available from the state committee of that party in advance of the time precinct caucuses are held.

ADDITIONAL INFORMATION

The dates and locations of all party caucuses and conventions receive advance press coverage and are generally advertised by the parties. Specific questions you have about any aspect of the nominating procedure may be directed to the state committee of the respective party. They may be able to respond to your inquiry directly or they may refer you to either your precinct committeeperson or your county or district chairperson. The addresses and telephone numbers of the state committees are as follows:

Washington State Democratic Central Committee
P.O. Box 4027
Seattle WA 98104
(206) 583-0664

Washington State Republican Party
16400 Southcenter Parkway, Suite 200
Seattle WA 98188
(206) 575-2900

INDEPENDENT CANDIDATE AND MINOR PARTY NOMINATING PROCEDURES

This summary of the procedures governing the nomination of independent and minor party candidates is **NOT** meant to be inclusive. Persons interested in this procedure should review Chapter 29.24 of the Revised Code of Washington or obtain more detailed information from the Office of the Secretary of State, 1007 S. Washington Street, P.O. Box 40237, Olympia, WA 98504-0237 or their county auditor.

NOMINATING CONVENTION

Any nomination of a candidate for partisan political office other than by a major political party must be made by a convention held not earlier than the last Saturday in June and not later than the first Saturday in July. Notice of the intention to hold a nominating convention must be published in a newspaper of general circulation within the county in which the convention is held at least ten days before the date of the convention. To be valid, a convention must be attended by at least twenty-five (25) registered voters. In order to nominate candidates for the offices of President and Vice President of the United States, United States Senator, or any statewide office, the parties holding the nominating convention must obtain and submit the signatures of at least two hundred (200) registered voters of the state of Washington. In order to nominate candidates for any other office the parties holding the nominating convention must obtain and submit the signatures of at least twenty-five (25) persons who are registered to vote in the jurisdiction of the office for which nominations are being made.

CERTIFICATE OF NOMINATION

The signatures and addresses of the registered voters who attended the convention and a record of the proceedings of the convention must be submitted to the appropriate filing officer no later than one week following the adjournment of the convention at which the nominations were made. Any candidate except for President and Vice President who is nominated at an independent or minor party convention, must file a declaration of candidacy and pay the filing fee required for the office sought during the regular filing period established for major political parties. (A nominating petition containing signatures of registered voters equal to the dollar amount of the filing fee is permitted for those candidates without sufficient assets or income to pay the filing fee.) The names of all of the candidates who have been nominated by convention except for President and Vice President will be printed on the primary ballot together with the major party candidates for their respective offices. Candidates for President and Vice President will only appear on the general election ballot. No other candidate's name may be printed on the general election ballot unless he or she receives at least one percent of the total votes cast for the office in the partisan primary and a majority of the votes cast for candidates of that party for that office. Independent candidates need only meet the one percent threshold in order to qualify for placement on the general election ballot.

WHERE FILINGS ARE MADE

When the candidacy is for:

A federal or statewide office, with the Secretary of State;

A legislative office that includes territory from more than one county, with the Secretary of State;

A county office or legislative office which lies entirely within a single county, with the County Auditor.

If a minor party or independent candidate convention nominates *any* candidate for office in a jurisdiction where voters from more than one county vote upon the office, *all* nominating petitions and the convention certificates are to be filed with the Office of the Secretary of State.

VOTING IN THE STATE OF WASHINGTON

Voter qualifications

To register to vote, you must be:

- A citizen of the United States
- A legal resident of Washington state
- At least 18 years old by election day

In the state of Washington, you do not have to register by political party or declare political party membership to vote in the state's regular primaries or general elections.

Registration deadlines

You may register to vote at any time, but you must be registered at least **30 days** in advance of an election if you wish to vote **at a polling place** on election day.

You may also register between 30 and 15 days before an election, but you must do so at a location designated by the Snohomish County Auditor's Office, and you will be required to vote by absentee ballot.

How to register

Washington citizens have access to several convenient methods of signing up to vote, including registration by mail and "Motor Voter" registration.

Mail-in registration forms are available from your county auditor or county elections department as well as many public libraries, schools and other government offices. You may also request a form by filling out the box at the right and mailing it to the Secretary of State.

"Motor Voter" registration is offered when you renew or apply for your driver's license. In most instances, a motor voter registration takes less than a minute to complete.

Change of residence

If you move to a **new** county, you must complete a new voter registration.

If you move within the **same** county, you do not need to re-register, but you must request a transfer of your registration. This can be done by calling or writing your county elections department, or by using a mail-in voter registration form.

NOTE: You must re-register or transfer your registration at least **30 days** before the election to be eligible to vote in your new precinct.

Absentee ballots

You may request an absentee ballot as early as 45 days before an election. (No absentee ballots are issued on election day except to hospitalized voters.)

Absentee ballots may be requested either by phone (259-4726) or by mail from the Auditor's Office. If you would like to automatically receive an absentee ballot before each election, call 388-3444 for more information.

NOTE: Absentee ballots must be signed and postmarked or delivered to the county elections officer **on or before election day**.

Election dates and poll hours

State primaries are generally held on the third Tuesday in September. The presidential primary, conducted once every four years, will be held on March 26, 1996.

General elections are held on the Tuesday after the first Monday in November. Polling hours for all primaries and elections are **7:00 a.m. to 8:00 p.m.**

Voter information

If you need assistance with registration and voting, contact the Snohomish County Auditor's Office at 388-3444.

Special services

The Office of the Secretary of State provides a toll-free voter information service to residents within the state of Washington. This service will be operated Monday through Friday from 9:00 a.m. to 8:00 p.m., beginning October 16, and continuing through the day of the election, November 7. In many instances, assistance can be provided to those who have difficulty reading this pamphlet because their primary language is not English.

Voters may also call to request any of the following special Voters Pamphlet versions: Tape-cassette, Braille, Spanish-language or Chinese-language.

For more information, call the Secretary of State Voter Information Hotline at 1-800-448-4881.

Request for Mail-in Voter Registration Form (Please Print)

Name: _____

Address: _____

City: _____ Zip Code: _____

Telephone: _____ No. of forms requested: _____

MAIL TO: Office of the Secretary of State
Voter Registration Services
P.O. Box 40230 • Olympia, WA 98504-0230

VOTING BY ABSENTEE BALLOT

INSTRUCTIONS: Any registered voter may apply for an absentee ballot. Once you receive your absentee/special ballot, vote it. Please do not attempt to vote at the poll site also. Contact your county auditor or elections department for further information. For your convenience, addresses and telephone numbers are listed below.

NOTE: Also listed below are phone numbers for the hearing impaired using Telecommunications Device for the Deaf (TDD) service. The Office of the Secretary of State also provides a toll-free voter information service for the hearing impaired: **TOLL-FREE HEARING IMPAIRED VOTER INFORMATION 1-800-422-8683**. If you are using an "800 number" for TDD service, you must be prepared to give the relay service operator the number for your county.

COUNTY	ADDRESS	CITY	ZIP	TELEPHONE NUMBER	HEARING IMPAIRED TDD SERVICE
Adams	210 West Broadway	Ritzville	99169	(509) 659-0090 Ext 203	(509) 659-1122
Asotin	P.O. Box 129	Asotin	99402	(509) 243-2084	1-800-856-1155
Benton	P.O. Box 470	Prosser	99350	(509) 783-1310 Ext 5618	(509) 736-3063
Chelan	P.O. Box 400	Wenatchee	98801	(509) 664-5431	1-800-833-6388
Clallam	P.O. Box 3030	Port Angeles	98362	(360) 417-2221	1-800-833-6388
Clark	P.O. Box 9812	Vancouver	98666-9812	(360) 699-2345	(360) 737-6032
Columbia	341 East Main St.	Dayton	99328	(509) 382-4541	(509) 382-4541
Cowlitz	207 North 4th	Kelso	98626	(360) 577-3005	1-800-833-6388
Douglas	P.O. Box 456	Waterville	98858	(509) 884-9403	(509) 884-9477
Ferry	P.O. Box 498	Republic	99166	(509) 775-5208	1-800-833-6388
Franklin	P.O. Box 1451	Pasco	99301	(509) 545-3538	1-800-344-4358
Garfield	P.O. Box 278	Pomeroy	99347	(509) 843-1411	1-800-344-4358
Grant	P.O. Box 37	Ephrata	98823	(509) 754-2011 Ext 377	(509) 754-4646
Grays Harbor	P.O. Box 751	Montesano	98563	(360) 249-4232	(360) 249-6575
Island	P.O. Box 5000	Coupeville	98239	(360) 679-7366	(360) 679-7305
Jefferson	P.O. Box 563	Port Townsend	98368	(360) 385-9119	1-800-833-6388
				1-800-831-2678	
King	500 4th Avenue	Seattle	98104	(206) 296-8683	(206) 296-0109
Kitsap	614 Division St.	Port Orchard	98366	(360) 876-7128	1-800-833-6388
Kittitas	205 W. 5th	Ellensburg	98926	(509) 962-7503	1-800-833-6388
Klickitat	205 S. Columbus	Goldendale	98620	(509) 773-4001	1-800-833-6388
Lewis	P.O. Box 29	Chehalis	98532-0029	(360) 740-1164	(360) 740-1480
Lincoln	P.O. Box 366	Davenport	99122	(509) 725-4971	1-800-833-6388
Mason	P.O. Box 400	Shelton	98584	(360) 427-9670 Ext 470	1-800-344-4358
Okanogan	P.O. Box 1010	Okanogan	98840	(509) 422-7240	1-800-856-1155
Pacific	P.O. Box 97	South Bend	98586	(360) 875-9317	(360) 875-9400
Pend Oreille	P.O. Box 5015	Newport	99156	(509) 447-3185	(509) 447-3186
Pierce	2401 S. 35th St.	Tacoma	98409-7484	(206) 591-7430	1-800-833-6388
				1-800-446-4979	
San Juan	P.O. Box 638	Friday Harbor	98250	(360) 378-3357	(360) 378-4151
Skagit	P.O. Box 1306	Mt. Vernon	98273	(360) 336-9305	(360) 336-9332
Skamania	P.O. Box 790	Stevenson	98648	(509) 427-9420	1-800-833-6388
Snohomish	3000 Rockefeller Avenue	Everett	98201	(206) 259-4726	(206) 388-3700
				1-800-562-4367	
Spokane	W. 1116 Broadway	Spokane	99260-0020	(509) 456-2320	(509) 456-2333
Stevens	P.O. Box 189	Colville	99114	(509) 684-7514	1-800-833-6388
Thurston	2000 Lakeridge Dr. S.W.	Olympia	98502	(360) 786-5408	(360) 754-2933
Wahkiakum	P.O. Box 543	Cathlamet	98612	(360) 795-3219	1-800-833-6388
Walla Walla	P.O. Box 1856	Walla Walla	99362	(509) 527-3204	1-800-833-6388
Whatcom	P.O. Box 398	Bellingham	98227	(360) 676-6745	(360) 738-4555
Whitman	P.O. Box 350	Colfax	99111	(509) 397-6270	1-800-833-6388
Yakima	128 N. 2nd St. #117	Yakima	98901	(509) 575-4044	(509) 575-4078

ABSENTEE BALLOT REQUEST

To request an absentee ballot by telephone, call the
Snohomish County Absentee Hotline : 259-4726.

TO BE FILLED OUT BY APPLICANT
I HEREBY DECLARE THAT I AM A REGISTERED VOTER
PLEASE PRINT IN INK

Registered Name _____

Street Address _____

City _____ Zip _____

Telephone: (Day) _____ (Evening) _____

For identification purposes only:

(Optional) Have you recently
Birth Date _____ registered to vote? Yes ☐ No ☐

TO BE VALID, YOUR SIGNATURE MUST BE INCLUDED

Date _____

SIGNATURE  _____

SEND MY BALLOT TO THE FOLLOWING ADDRESS:

Mailing Address _____

City _____

State _____

Zip _____ Country _____

THIS APPLICATION IS FOR:

General Election Only

November 7, 1995

☐

Permanent Request

All Future Elections

☐

FOR OFFICE USE ONLY:

Precinct Code _____

Levy Code _____

Ballot Code _____

Ballot Mailed _____

RETURN TO:

BOB TERWILLIGER, County Auditor
3000 Rockefeller Ave, MS 505
Everett, WA 98201-4060



If you have requested an Absentee Ballot or have a permanent request for an Absentee Ballot on file, please do not submit another application.

ABSENTEE BALLOT REQUEST

TO BE FILLED OUT BY APPLICANT
I HEREBY DECLARE THAT I AM A REGISTERED VOTER
PLEASE PRINT IN INK

Registered Name _____

Street Address _____

City _____ Zip _____

Telephone: (Day) _____ (Evening) _____

For identification purposes only:

(Optional) Have you recently
Birth Date _____ registered to vote? Yes ☐ No ☐

TO BE VALID, YOUR SIGNATURE MUST BE INCLUDED

Date _____

SIGNATURE  _____

SEND MY BALLOT TO THE FOLLOWING ADDRESS:

Mailing Address _____

City _____

State _____

Zip _____ Country _____

THIS APPLICATION IS FOR:

General Election Only

November 7, 1995

☐

Permanent Request

All Future Elections

☐

FOR OFFICE USE ONLY:

Precinct Code _____

Levy Code _____

Ballot Code _____

Ballot Mailed _____

RETURN TO:

BOB TERWILLIGER, County Auditor
3000 Rockefeller Ave, MS 505
Everett, WA 98201-4060

If you have requested an Absentee Ballot or have a permanent request for an Absentee Ballot on file, please do not submit another application.

WASHINGTON STATE

VOTERS PAMPHLET

STATE GENERAL ELECTION

NOVEMBER 7, 1995



EDITION 10

PUBLISHED BY THE OFFICE OF THE SECRETARY OF STATE
AND THE SNOHOMISH COUNTY AUDITOR

The Office of the Secretary of State is grateful to Richard A. Wilson, Manager, Customer Service Support, and all the members of the U.S. Postal Service team for their tireless efforts to ensure the timely distribution of this publication.

NON PROFIT ORG.
U.S. POSTAGE
PAID
Seattle, WA
Permit No. 1216

Car Rt. Presort/WS

Postmaster please deliver upon
receipt

RESIDENTIAL CUSTOMER, LOCAL

EDITION 10

98290 98291

Snohomish County Carrier Routes Only

98072