

04
2001
002,002
1991
0003
01

WASHINGTON STATE VOTERS PAMPHLET

State General Election, November 8, 1994



EDITION NO. 3
PUBLISHED BY THE OFFICE OF THE SECRETARY OF STATE
& YAKIMA COUNTY AUDITOR

INTRODUCTION TO THE 1994 VOTERS PAMPHLET

During the past year, we have witnessed a number of 50th anniversary commemorations relating to key events of World War II. In keeping with the spirit of these observances, the 1994 Washington State Voters Pamphlet pays tribute to one of the lasting legacies of WWII — absentee voting.

While the state of Washington has provided for absentee voting since the early 1900's, the system really came into widespread use in the 1944 election. Voting by mail was the only option for the hundreds of thousands of U.S. service men and women who were serving their country overseas.

As World War II veterans returned home with the experience of voting by mail, absentee balloting became increasingly popular. The state of Washington pioneered several new methods of mail voting, including the permanent absentee ballot for senior citizens and the disabled, and the special service absentee ballot for members of the military and overseas voters.

Today, Washington is recognized as one of the most progressive states for voting by absentee ballot. Any registered voter may request an absentee ballot up to the day before the election (hospitalized voters may receive an absentee ballot on election day). And recently, the permanent absentee ballot program was extended to all registered voters (an application is available in the back of this pamphlet).

This year, Washington state continues its tradition of making voting as convenient and accessible as possible. Seven counties in our state conducted their September primaries entirely by mail, an approach which is helping to increase voter turnout and reduce election costs.

We applaud voters for making Washington state a leader in promoting citizen participation in voting and elections, especially those who served during World War II and helped popularize absentee voting. We offer those veterans our heartfelt thanks. They gave most of the world renewed freedom.



RALPH MUNRO
Secretary of State

Dear Yakima County Voter:

Two years ago the presidential election achieved a record voter turnout of 82% in our county. Last year, 1993, fell far short of that at 53% of the electorate voting. While the election this fall will include a senate and congressional race, historical trends tell us that voter turnout will be well below the mark set in 1992. In addition to the higher profile races for federal office you will find state-wide initiatives and referendums, races for state legislative seats, county government offices, and special election propositions.

I encourage you to use this pamphlet to be informed about the contests on this fall's ballot and to be part of your government by voting. While the campaigns and issues in this year's election aren't as highly publicized as a presidential election, they often represent a very direct and significant impact on our daily lives. At close examination I believe you will find contests that are not only interesting but immersed in issues in which you have a personal stake. Local elected officials are your direct link to these issues and to your government.

Your vote is very valuable. In a county of approximately 200,000 residents, 80,000 are registered to vote. Of the registered voters only about 45,000 to 50,000 will vote this fall. Your vote could make the difference!

My commitment to the local voters pamphlet is part of the responsibility I feel for helping the citizens of Yakima County participate in elections. I hope that the local voters pamphlet will help you to make informed choices as you exercise your right to vote.

Please vote on November 8th!

DOUG COCHRAN
Yakima County Auditor

This pamphlet was prepared by Erika E. Aust, Director, State Voters Pamphlet and Candace A. McDonald, Composition Coordinator, Office of the Secretary of State; Lynda Sissom, Coordinator and Diana Soules, Composition, Yakima County.



A60003 129213

TABLE OF CONTENTS

Introduction	2	Federal Offices	19
Voter's Checklist	3	Supreme Court	22
Political Party Information	4	State Legislature	24
Public Disclosure Information	4	Yakima County Local Pamphlet.....	29
Precinct Committee Officer Information ..	5	Voting in the State of Washington.....	69
Initiative Measure 607	6	Voting by Absentee Ballot.....	70
Referendum Bill 43.....	8	Find Your District	71
Text of State Measures	10	Absentee Ballot Application	71

VOTER'S CHECKLIST

INITIATIVE MEASURE 607

Shall persons other than dentists be licensed to make and sell dentures to the public, as regulated by a new state board of denture technology?

YES

NO

☐
☐

REFERENDUM BILL 43

Shall taxes on sales of cigarettes, liquor, and pop syrup be extended to fund violence reduction and drug enforcement programs?

☐
☐

NOTE: In the Presidential Election of 1992 the majority of voters in the State of Washington voted Democratic for the office of President. Therefore, according to state law, all partisan offices will list the Democratic candidates first.

U.S. SENATE

SUPERIOR COURT (if applicable)

U.S. REPRESENTATIVE

STATE SENATOR (if applicable)

SUPREME COURT

STATE REPRESENTATIVE

Position No. 2

Position No. 1

Position No. 3

Position No. 2

LOCAL ELECTIONS _____

Secretary of State Toll-Free Hotlines

1-800-448-4881

TDD (Hearing Impaired) 1-800-422-8683

VOTER PARTICIPATION IN ELECTION CAMPAIGNS

Any person who wishes to participate in the election campaign process through financial contributions, volunteer work or other types of involvement, may contact the candidate or party of his or her choice for more information. Listed below are the addresses and telephone numbers of the major and minor political parties with candidates on the general election ballot.

POLITICAL PARTIES

Gun Control Party	7021 Monaco S.E., Tumwater, 98501	(206) 754-6631
Libertarian Party	P.O. Box 20732, Seattle, 98102	1-800-353-1776
Natural Law Party of Washington	13032 28th Avenue N.E., Seattle, 98125	(206) 821-1323
Populist Party of Pierce Co.	7911 S. Hosmer, #D-106, Tacoma, 98408	(206) 845-8245
State Democratic Party	P.O. Box 4027, Seattle, 98104	(206) 583-0664
State Republican Party	16400 Southcenter Pkwy., #200, Seattle, 98188	(206) 575-2900

DISCLOSURE REQUIREMENTS FOR CONTRIBUTIONS

Contributions to Candidates and Political Committees: An individual may not give more than \$500 in the primary election and \$500 in the general election to a candidate for the state legislature. Individuals may only give a candidate for Governor, Lt. Governor and the other statewide executive offices a maximum of \$1,000 in the primary and \$1,000 in the general election. Individuals may give an unlimited amount to a political party, ballot issue committee or other political action committee. During the 21 days before the general election, however, a person may contribute no more than \$5,000 to a local or judicial office candidate, political party or other political committee. Contributions from corporations, unions, businesses, associations and similar organizations are permitted, subject to limits and other restrictions.

Registration and Reporting by Candidates and Political Committees: No later than two weeks after an individual becomes a candidate or a political committee is organized, a campaign finance registration statement must be filed with the Public Disclosure Commission (PDC) and the local county elections official. (Committees that form within three weeks of the election must register within three business days.) The candidate or committee treasurer is also required to report periodically the source and amount of campaign contributions over \$25 and to list campaign expenditures. The occupation and employer of individuals giving \$100 or more to a campaign must also be identified.

These reports are open to the public. Copies are available at the PDC Office in Olympia or at the county elections office in the county where the candidate lives. In addition, the campaign financial books and records of a candidate or committee are available for public inspection the last eight days (Monday through Friday) before each election. The campaign registration on file with PDC and the county elections office shows the time and place where the records may be inspected.

Independent Campaign Expenditures: Anyone making expenditures totaling \$100 or more in support of or opposition to a state or local candidate or ballot proposition (not including contributions made to a candidate or political committee) must file a report with the Public Disclosure Commission within five days. Forms are available from PDC or the county elections office. Also, all political advertising must identify the person paying for the ad.

Federal Campaigns: Contributions to U.S. Senate and House of Representative candidates are regulated by federal law. An individual may contribute a maximum of \$1,000 in the primary election and \$1,000 in the general election to each candidate for senator and representative. Corporations and unions are prohibited from contributing to federal campaigns. Copies of federal campaign finance reports are available from the PDC.

For additional information contact: the Public Disclosure Commission, 711 Capitol Way, Room 403, P.O. Box 40908, Olympia WA 98504-0908, (206) 753-1111; for federal campaigns, the Federal Election Commission, 1-800-424-9530.

FEDERAL INCOME TAX CREDITS & DEDUCTIONS FOR CONTRIBUTIONS

Political Contributions Tax Credit: The Federal Tax Reform Act of 1986 eliminated the personal tax credit previously allowed for political contributions.

As in the past, contributions or gifts made to political parties or candidates may not be deducted as a business expense. In addition, expenses paid or incurred to take part in any political campaign on behalf of a candidate for public office are not deductible as a business expense. Finally, indirect political contributions, such as advertising for a political party or admission to a program with proceeds going to a political party or candidate, may not be deducted as a business expense.

Presidential Election Campaign Fund Checkoff: Individuals, however, may make a deductible contribution to the Presidential Election Campaign Fund Checkoff. This fund was established to help pay for presidential election campaigns. \$3 may be taken (\$6 on a joint return) from an individual's taxes to go to a general fund, not for any specific party, to meet the expenses of the 1996 presidential election. The contribution will not increase your tax or reduce your refund.

THE OFFICE OF PRECINCT COMMITTEE OFFICER

THE OFFICE OF PRECINCT COMMITTEE OFFICER

In addition to the various state and county offices which will appear upon the general election ballot, most voters will have the opportunity to vote for the office of "precinct committee officer."

WHO IS ELIGIBLE

State law (RCW 29.42.040) provides that any person who is a registered voter and a member of a major political party may become a candidate for the office of precinct committee officer by filing a declaration of candidacy and paying a \$1 filing fee to the county auditor. Since voters do not register by political party in Washington, a candidate declares himself or herself to be a Democrat or a Republican at the time he or she files for the office. The filing period for the office of precinct committee officer begins at the same time as the filing period for other partisan offices (the fourth Monday in July in even-numbered years), and lasts for three weeks, ending on the third Friday following that date.

ELECTION OF PRECINCT COMMITTEE OFFICER

Candidates for precinct committee officer do not appear on the primary ballot but rather are placed directly on the general election ballot, and the candidate receiving the most votes in his or her precinct for each political party is declared elected. State law (RCW 29.42.050) does provide, however, that to be declared elected, a candidate must receive at least 10% of the number of votes cast for the candidate of his or her party receiving the greatest number of votes in that precinct.

TERM OF OFFICE AND VACANCIES

The term of office for anyone elected to the office of precinct committee officer is two years, and commences upon the official canvass of election returns by the county canvassing board. Should a vacancy occur in the office (caused by death, disqualification, resignation, or failure to elect), the usual process is for the chairman of the party central committee to fill the vacancy by appointment. Appointments to fill vacancies cannot be made between the state general election and the organization meeting of the county central committee, which must be held prior to the second Saturday in January following the election of precinct committee officer.

DUTIES OF PRECINCT COMMITTEE OFFICER AS MEMBERS OF THE COUNTY AND STATE CENTRAL COMMITTEES

1. Each precinct committee officer is a member of the county central committee. The county central committee has the authority to fill vacancies on the party ticket for partisan county offices and for legislative offices in

districts entirely within that county when no candidate files for such a position or when a candidate or nominee dies or is disqualified leaving no candidate of that party for such an office; they may also nominate persons for appointment to these offices if an incumbent of that party resigns; and finally, elect members to the state central committee.

2. The state central committee has the authority under state law (RCW 29.42.020) to:
 - Call caucuses and conventions.
 - Provide for the election of delegates to national nominating conventions.
 - Fill vacancies on the party ticket for any federal, state or legislative office which encompasses more than one county.
 - Nominate persons to fill vacancies caused by resignation or death of an incumbent of that party in state offices and legislative offices in districts which encompass more than one county.
 - Provide for the nomination of presidential electors.
 - Perform other functions inherent in such an organization.

NON-STATUTORY DUTIES AND RESPONSIBILITIES OF PRECINCT COMMITTEE OFFICER

Specific duties and responsibilities of a precinct committee officer are usually determined by either the county or state central committees. The following duties are commonly assigned to precinct committee officers by their party organization:

- Keep informed on current issues and candidates, study the party platform.
- Attend meetings of county committees and actively participate in fund-raising activities.
- Obtain lists of registered voters from the County Auditor's office.
- Canvass the precinct and become acquainted with the voters residing therein.
- Establish a record of eligible voters and party members within the precinct.
- Encourage voter registration within the precinct.
- Distribute party election materials during election campaigns.
- Recommend party members to work as precinct election officers.
- Encourage voters to get out and vote on election day.
- Encourage the use of absentee ballots.
- Hold precinct caucuses at certain selected times for the purpose of adopting resolutions and selecting delegates to the county conventions.

Individuals who are interested in serving as a precinct committee officer should contact the chairman of the county central committee of their party or the state committee office of that party.



INITIATIVE MEASURE 607

TO THE PEOPLE

Note: The ballot title and explanatory statement were written by the Attorney General as required by law. The complete text of Initiative Measure 607 begins on page 10.

Statement for

Initiative 607 closely resembles measures that have passed in Washington's surrounding states. Since 1979 in Oregon, 1982 in Idaho, and 1984 in Montana denturism has proven to be an *effective, safe and affordable* option for denture patients. Canada has recognized the profession of denturism for over 30 years. These states and countries have proven that a denturist is a competent and reliable alternative to a dentist for the provision of dentures.

In 1987 the State Health Coordinating Council under the Department of Social and Health Services found that denturists posed no threat to the public's health and that legislation on denturism should be enacted. Endorsers of Initiative 607 include AARP, Washington State Retired Teachers Association, Retired Public Employees, Washington State Labor Council and Citizens for Health.

Denturists are more than laboratory technicians. Initiative 607 does not include a "grandfather clause" and it calls for individuals who wish to become licensed Washington denturists to pass a written and practical board certified exam. This exam covers college level course topics such as: microbiology, oral pathology and partial denture construction and design. Licensed denturists will be highly qualified denture health care providers.

Finally, the field of denturism has proven to lower the costs of dentures due to increased competition in the provision of dentures to the general public. Initiative 607 simply provides the citizens of Washington the **FREEDOM OF CHOICE** for their denture care. Upon passage of Initiative 607 Washingtonians will finally receive the same options that their neighbors have received for decades.

Official Ballot Title:

Shall persons other than dentists be licensed to make and sell dentures to the public, as regulated by a new state board of denture technology?

Rebuttal of Statement against

Millions of dollars have been donated by special interest groups to Washington's elected officials over the last 15 years in an attempt to restrict the legislature's ability to pass this issue. Democrats and Republicans have never had the chance to say **YES** or **NO** to I-607. Citizens for Affordable Denture Care consists of **hundreds of thousands** of Washingtonians who have already said **YES** to I-607's **Freedom of Choice**.

Now, **YOU** have the opportunity to choose.

Voters Pamphlet Statement Prepared by:

VALLAN CHARRON, Chairman, Citizens for Affordable Denture Care; HAROLD MOSS, Mayor of Tacoma; KURT ROEHL, member of Washington Denturist Association.

Advisory Committee: ALEXANDER G. SCHAUSS, Ph.D., Executive Director, Citizens for Health; JOHN J. DEMANOVICH, President, Retired Public Employees of Washington; MAX ROFFMAN, Board of Directors, Puget Sound Council of Senior Citizens; MARTHA KEMP, President, Washington State Retired Teachers Association; LARS HENNUM, President, Washington State Council of Senior Citizens.

The law as it now exists:

Current law defines the furnishing or fitting of dentures (sometimes called "false teeth") as an element of the practice of dentistry. No person may legally prescribe or furnish dentures to a patient except a licensed dentist, or a person working under the direct supervision of a licensed dentist. "Denturists" are not currently licensed in the State of Washington.

The effect of Initiative Measure 607, if approved into law:

This measure would allow a new category of persons, licensed as "denturists," to examine patients and make and fit dentures. The measure creates a state board of dental technology, which would establish standards for the practice of denturism, administer tests and examinations, issue and renew licenses for qualifying denturists, and have authority to discipline denturists who violate professional standards. A denturist could supply dentures directly to patients without the supervision or involvement of a dentist. However, denturists and dentists would be free to practice together if they wished, and dentists would still be permitted to furnish dentures as a part of their practice.

Statement against

PROTECT SENIOR CITIZENS AND OTHER DENTAL PATIENTS - VOTE NO ON I-607

VOTE NO ON I-607 TO PROTECT PUBLIC HEALTH.

This initiative is a threat to public health. Obtaining dentures is not like having a pair of shoes fitted at the local mall or buying magnifying eyeglasses at the drug store. Providing partials (removable bridges attached to natural teeth) and dentures (false teeth) is a complex health care service and is part of overall dental care requiring the expertise of your dentist.

VOTE NO ON I-607 TO MAINTAIN OUR HIGH DENTAL STANDARDS.

A few dental lab technicians can acquire a quick license through a loophole hidden in the fine print of I-607. These technicians have no formal training in hands-on patient care. Senior citizens and others could place their oral health in the hands of unqualified technicians without the training to recognize unhealthy conditions. An ill-fitting denture or bridge destroys bone and teeth. Health care is too serious to "let the buyer beware!"

VOTE NO ON I-607 TO SAY THAT ILLEGAL PAID SIGNATURE GATHERING IS WRONG.

I-607 is backed by a small group who paid \$200,000 to manipulate the process by collecting signatures illegally. These few technicians who would gain a quick license have lobbied the legislature for years and both Democrats and

Republicans have said "NO!" I-607 lacks public support. It only benefits the few technicians who paid to get this initiative on the ballot.

Vote for Good Oral Health

Vote Against Manipulation

Vote NO on I-607

Rebuttal of Statement for

Forty-five states prohibit denturism, forty-nine prohibit fitting partial dentures.

The "grandfather clause" **will** allow the I-607 sponsors to become licensed **without** attending an accredited school (**see section 10.1-3 and 18.3**).

I-607 **does not** require sanitation controls to protect against infectious diseases.

I-607 is **not** an economic issue. Dentures and partials represent **less than one-half of one percent** of dentists' insurance claims.

I-607 is radical health care deregulation opposed by the **Gray Panthers**.

Voters Pamphlet Statement Prepared by:

DR. VICTOR J. BARRY; DR. MARY K. SMITH;
DR. RONALD E. HARMON.



REFERENDUM BILL 43

CHAPTER 7, LAWS OF 1994, 1ST SPECIAL SESSION

Note: The explanatory statement was written by the Attorney General as required by law. The ballot title was submitted as part of Referendum Bill 43. The complete text of Referendum Bill 43 begins on page 15.

Vote cast by the 1994 Legislature on final passage:
House: Yeas, 51; Nays, 43; Absent, 0; Excused, 4.
Senate: Yeas, 26; Nays, 20; Absent, 0; Excused, 3.

Statement for

GET TOUGH, BE SMART

Referendum 43 funds a comprehensive attack on drugs and violent crime.

It continues funding for important and proven efforts to prevent drug abuse and prosecute drug crimes:
• Prosecutors to go after drug dealers; • School security personnel to protect our children; • Alcohol and drug testing for criminals on parole; • Intervention, treatment and prevention programs for youth and troubled families.

It pays for new steps to fight violent crime by young people: • Tougher sentences for violent youth; • Tougher sentences for drive-by shootings; • Tougher sentences for crimes involving guns; • Prosecution and sentencing of serious juvenile offenders as adults.

We need to be tough and smart to fight drugs and violence. Referendum 43 is a tough, smart strategy.

GIVING PARENTS, COMMUNITIES A VOICE

Parents, working with their neighbors and community leaders, will choose which strategies to fund in their local communities. But efforts will have to show results or lose their funding, so taxpayers won't keep paying for programs that don't work.

NO NEW TAXES

These efforts are funded by cigarette, alcohol, and pop syrup taxes, most of which have been in place since 1989. There are **no new taxes** in Referendum 43, though it increases the tax on cigarettes and greatly reduces the tax on pop. Alcohol taxes stay the same.

Official Ballot Title:

Shall taxes on sales of cigarettes, liquor, and pop syrup be extended to fund violence reduction and drug enforcement programs?

The law as it now exists:

The 1993 legislature enacted temporary additional taxes on the sale of wine, beer, spirits, and cigarettes, and provided that the revenues from these taxes would be used to pay for drug enforcement and educational programs.

BACKING UP TOUGH TALK

Initiative 601 requires your approval to continue funding for these important, proven efforts. Without your "Yes" vote, the dedicated funding for these efforts will disappear.

A "Yes" vote says keep up the fight against drugs and violence in our communities — and fight even harder.

Vote "Yes" on Referendum 43.

For more information, call (206) 627-4343.

Rebuttal of Statement against

Referendum 43 has *no new taxes*. It continues funding for crime fighting actions working since 1989. Referendum 43 is about strengthening the front-line fight for safer schools and neighborhoods. Funding, mostly from cigarettes, goes *only* to fight drugs and crime with proven steps like DARE, tougher sentences for violent juveniles and special drug crime prosecutors. Police, prosecutors and parents support Referendum 43 because it's vital to our future. Vote "YES" to combat drugs and violence.

Voters Pamphlet Statement Prepared by:

MARLIN APPELWICK, State Representative; MARCUS GASPARD, State Senator; BRIAN EBERSOLE, Speaker, State House of Representatives.

Advisory Committee: PAMEAKES, Chair, Mothers Against Violence in America; REV. DR. SAMUEL B. McKINNEY, Senior Pastor, Mount Zion Baptist Church; NORM MALENG, King County Prosecutor; JOHN A. MOYER, M.D., State Senator; MIKE PATRICK, Executive Director, Washington State Council of Police Officers.

These taxes are scheduled to expire on July 1, 1995. In addition, the 1991 legislature imposed a tax on the sale of carbonated beverages and syrup, with the revenue also to be placed in the drug enforcement and education fund.

The effect of Referendum Bill 43, if approved into law:

This referendum is on the tax portions of E2SHB 2319, entitled "an act relating to violence prevention." The bill contains a number of provisions, including: planning for public health services improvements, community health and safety networks, revising firearm-related crimes and sentencing, revising the laws on licenses to carry firearms, authorizing local governments to enact curfew ordinances and other public safety laws, violence-reduction programs in the schools, and measures to reduce the effects of violence on television. To pay for these new programs, the bill would indefinitely extend the 1993 taxes on sale of wine, beer, and spirits, and would extend the cigarette sales tax

while increasing it from one and one half mills to five and one-fourth mills per cigarette. The 1991 carbonated beverage tax would be revised to one dollar per gallon on the sale of syrup for use in carbonated beverages. All these taxes would be placed in a violence reduction and drug enforcement account. This referendum is on the tax portions of the bill, and would not directly affect the remainder. However, the bill provides that certain sections relating to enhanced sentences for crime will automatically expire on July 1, 1995, if the voters reject this referendum. There are other taxes on the sale of liquor and cigarettes which would not be affected by this referendum.

NOTE: As indicated in the explanatory statement by the Attorney General the amendments made in certain sections of Chapter 7, Laws of 1994, 1st Special Session, (the Youth Violence Bill) will expire on July 1, 1995, if the referendum is not approved by the voters. A copy of those sections can be obtained by calling the Voter Hotline at 1-800-448-4881.

Statement against

REFERENDUM 43: VOTE YES AND YOU'RE THE VICTIM.

It's bad enough that Washington citizens live in fear of being victimized by violent criminals. But voting for Referendum 43 will make taxpayers victims *again*—victims of those in Olympia who spent \$16 billion for bigger government, and now want to raise your taxes \$114 million for public safety.

Vote NO on Referendum 43 and tell Olympia to fund anti-crime efforts *first* and bureaucracy *last*.

\$1 IN PUBLIC SAFETY FOR EVERY \$3 IN SOCIAL PROGRAMS.

Referendum 43 will raise taxes \$114 million. But for every dollar the Youth Violence Prevention Act would spend on public safety, it would spend \$3 for the kinds of government programs that have allowed the number of violent crimes to jump 93% in less than 18 years.

PUBLIC SAFETY NEEDS PRIORITY SPENDING AND ACCOUNTABILITY, NOT HIGHER TAXES.

Think we need new taxes to cover a huge prison budget? Think again.

Prison costs are just 2.5% of the state budget. And while millions of our tax dollars are still being spent on state travel, retreats, office furnishings and equipment, a brand-new prison sits empty near Spokane because the Legislature wouldn't provide \$7 million from the state's \$337 million savings account to open the doors.

New taxes will reward big-spending bureaucracy with more money to spend, without significantly reducing crime.

VOTE NO AND FORCE LAWMAKERS TO FUND PUBLIC SAFETY FIRST.

A vote *against* Referendum 43 will give lawmakers 9 months to revise the law and make public safety a top budget priority. We *can* get violent criminals off our streets without new taxes. Vote *no* and force legislators to reduce wasteful spending and put the savings into community law enforcement, public protection and more jails for criminals.

Rebuttal of Statement for

Tax-increase supporters say, "Referendum 43 has no new taxes." But we'll pay millions more in taxes if Referendum 43 is approved — taxes we don't need.

Criminal justice funding will NOT automatically disappear if you vote "No." Legislators have a year — and enough money — to fund public safety programs with *existing revenues*.

Please vote "No" on Referendum 43. Tell lawmakers to make our safety top priority, and pay for public safety *first* — without new taxes.

Voters Pamphlet Statement Prepared by:

MIKE PADDEN, State Representative; DAN McDONALD, State Senator; TOM CAMPBELL, State Representative.

Advisory Committee: ANN ANDERSON, State Senator; LINDA SMITH, State Senator; IDA BALLASIOTES, State Representative; BETTY EDMONDSON, State Representative; HELEN HARLOW, Founder of Tennis Shoe Brigade.



COMPLETE TEXT OF Initiative Measure 607

AN ACT Relating to denturism; amending RCW 18.120.020 and 18.130.040; adding a new section to chapter 48.20 RCW; adding a new section to chapter 48.21 RCW; adding a new section to chapter 48.43 RCW; adding a new section to chapter 48.44 RCW; adding a new section to chapter 48.46 RCW; adding a new chapter to Title 18 RCW; and creating a new section.

BE IT ENACTED BY THE PEOPLE OF THE STATE OF WASHINGTON:

NEW SECTION. Sec. 1. The state of Washington finds that to realize the state's current statutory policy of regulating health professions at the least restrictive level consistent with the public interest, a program of licensure for denturists should be established. The intent of the legislature is to help assure the public's health, provide a mechanism for consumer protection, and offer cost-effective alternatives for denture care services and products to individual consumers and the state.

NEW SECTION. Sec. 2. Unless the context clearly requires otherwise, the definitions in this section apply throughout this chapter.

(1) "Board" means the state board of denture technology.

(2) "Denture" means a removable full or partial upper or lower dental appliance to be worn in the mouth to replace missing natural teeth.

(3) "Denturist" means a person licensed under this chapter to engage in the practice of denturism.

(4) "Department" means the department of health.

(5) "Practice of denturism" means:

(a) Making, placing, constructing, altering, reproducing, or repairing a denture; and

(b) Taking impressions and furnishing or supplying a denture directly to a person or advising the use of a denture, and maintaining a facility for the same.

(6) "Secretary" means the secretary of health or the secretary's designee.

NEW SECTION. Sec. 3. (1) Before making and fitting a denture, a denturist shall examine the patient's oral cavity.

(a) If the examination gives the denturist reasonable cause to believe that there is an abnormality or disease process that requires medical or dental treatment, the denturist shall immediately refer the patient to a dentist or physician. In such cases, the denturist shall take no further action to manufacture or place a denture until the patient has been examined by a dentist or physician and the dentist or physician gives

written clearance that the denture will pose no threat to the patient's health.

(b) If the examination reveals the need for tissue or teeth modification in order to assure proper fit of a full or partial denture, the denturist shall refer the patient to a dentist and assure that the modification has been completed before taking an impression for the completion of the denture.

(2) A denturist who makes or places a denture in a manner not consistent with this section is subject to the sanctions provided in chapter 18.130 RCW, the uniform disciplinary act.

(3) A denturist must successfully complete special training in oral pathology prescribed by the board, whether as part of an approved associate degree program or equivalent training, and pass an examination prescribed by the board, which may be a part of the examination for licensure to become a licensed denturist.

NEW SECTION. Sec. 4. No person may represent himself or herself as a licensed denturist or use any title or description of services without applying for licensure, meeting the required qualifications, and being licensed as a denturist by the department, unless otherwise exempted by this chapter.

NEW SECTION. Sec. 5. Nothing in this chapter prohibits or restricts:

(1) The practice of a profession by an individual who is licensed, certified, or registered under other laws of this state and who is performing services within the authorized scope of practice;

(2) The practice of denturism by an individual employed by the government of the United States while the individual is engaged in the performance of duties prescribed by the laws and regulations of the United States;

(3) The practice of denturism by students enrolled in a school approved by the department. The performance of services must be pursuant to a course of instruction or an assignment from an instructor and under the supervision of an instructor; or

(4) Work performed by dental labs and dental technicians under the written prescription of a dentist.

NEW SECTION. Sec. 6. (1) The state board of denture technology is created. The board shall consist of seven members appointed by the secretary as follows:

(a) Four members of the board must be denturists licensed under this chapter, except initial appointees, who must have five years' experience in the field of denturism or a related field.

(b) Two members shall be selected from persons who are not affiliated with any health care profession or facility, at least one of whom must be over sixty-five years of age representing the elderly.

(c) One member must be a dentist licensed in the state of Washington.

(2) The members of the board shall serve for terms of three



COMPLETE TEXT OF Initiative Measure 607 (cont.)

years. The terms of the initial members shall be staggered, with the members appointed under subsection (1) (a) of this section serving two-year and three-year terms initially and the members appointed under subsection (1) (b) and (c) of this section serving one-year, two-year, and three-year terms initially. Vacancies shall be filled in the same manner as the original appointments are made. Appointments to fill vacancies shall be for the remainder of the unexpired term of the vacant position.

(3) No appointee may serve more than two consecutive terms.

(4) Members of the board shall be reimbursed for travel expenses under RCW 43.03.050 and 43.03.060.

(5) A member of the board may be removed for just cause by the secretary.

NEW SECTION. Sec. 7. (1) The board shall elect a chairperson of the board annually. The same person may not hold the office of chairperson for more than three years in succession.

(2) A majority of the board constitutes a quorum for all purposes, and a majority vote of the members voting governs the decisions of the board.

NEW SECTION. Sec. 8. The board shall:

(1) Determine the qualifications of persons applying for licensure under this chapter;

(2) Prescribe, administer, and determine the requirements for examinations under this chapter and establish a passing grade for licensure under this chapter;

(3) Adopt rules under chapter 34.05 RCW to carry out the provisions of this chapter;

(4) Set all licensure, examination, and renewal fees in accordance with RCW 43.70.250;

(5) Advise the secretary on the hiring of clerical, administrative, investigative, and other staff as needed to implement this chapter and act on behalf of the board;

(6) Evaluate and designate those schools from which graduation will be accepted as proof of an applicant's completion of coursework requirements for licensure; and

(7) Act as the disciplining authority under this chapter in accordance with the uniform disciplinary act, chapter 18.130 RCW, which governs unlicensed practice, the issuance and denial of licenses, and the disciplining of license holders under this chapter.

NEW SECTION. Sec. 9. The secretary shall:

(1) Issue licenses for the practice of denturism under this chapter;

(2) Administer oaths and subpoena witnesses for the

purpose of carrying out the activities authorized under this chapter;

(3) Establish forms and procedures necessary to administer this chapter;

(4) Hire clerical, administrative, investigative, and other staff as needed to implement this chapter and act on behalf of the board; and

(5) Issue licenses of endorsement for applicants from states that maintain standards of practice substantially equivalent to this state.

NEW SECTION. Sec. 10. The secretary shall issue a license to practice denturism to an applicant who submits a completed application, pays the appropriate fees, and meets the following requirements:

(1) A person currently licensed to practice denturism under statutory provisions of another state or federal enclave that maintains standards of practice substantially equivalent to this chapter shall be licensed without examination upon providing the department with the following:

(a) Proof of successfully passing a written and clinical examination for denturism in a state that the board has determined has substantially equivalent standards as those in this chapter in both the written and clinical examinations; and

(b) An affidavit from the state agency where the person is licensed or certified attesting to the fact of the person's licensure or certification.

(2) A person graduating from a formal denturism program shall be licensed if he or she:

(a) Documents successful completion of formal training with a major course of study in denturism of not less than two years in duration at an educational institution recognized by the board; and

(b) Passes a written and clinical examination approved by the board.

(3) An applicant who does not otherwise qualify under subsection (1) or (2) of this section shall be licensed within two years of the effective date of this act if he or she:

(a) Provides to the board three affidavits by persons other than family members attesting to the applicant's employment in denture technology for at least five years, or provides documentation of at least four thousand hours of practical work within denture technology;

(b) Provides documentation of successful completion of a training course approved by the board or completion of an equivalent course approved by the board; and

(c) Passes a written and clinical examination administered by the board.

NEW SECTION. Sec. 11. The board shall administer the examinations for licensing under this chapter, subject to the following requirements:

(1) Examinations shall determine the qualifications, fitness, and ability of the applicant to practice denturism. The test



COMPLETE TEXT OF Initiative Measure 607 (cont.)

shall include a written examination and a practical demonstration of skills.

(2) Examinations shall be held at least annually.

(3) The first examination shall be conducted not later than July 1, 1995.

(4) The written examination shall cover the following subjects: (a) Head and oral anatomy and physiology; (b) oral pathology; (c) partial denture construction and design; (d) microbiology; (e) clinical dental technology; (f) dental laboratory technology; (g) clinical jurisprudence; (h) asepsis; (i) medical emergencies; and (j) cardiopulmonary resuscitation.

(5) Upon payment of the appropriate fee, an applicant who fails either the written or practical examination may have additional opportunities to take the portion of the examination that he or she failed.

The board or secretary may hire trained persons licensed under this chapter to administer and grade the examinations or may contract with regional examiners who meet qualifications adopted by the board.

NEW SECTION. Sec. 12. The department shall charge and collect the fees established by the board. Fees collected shall be placed in the health professions account under RCW 43.70.320.

NEW SECTION. Sec. 13. (1) A license issued under section 9 of this act is valid for two years. A license may be renewed by paying the renewal fee.

(2) If a license issued is effective on a date other than July 1, it shall be valid until the following June 30.

(3) The license shall contain, on its face, the address or addresses where the license holder will perform the denturist services.

NEW SECTION. Sec. 14. The board shall establish by rule the administrative requirements for renewal of licenses to practice denturism, but shall not increase the licensure requirements provided in this chapter. The board shall establish a renewal and late renewal penalty in accordance with RCW 43.70.250. Failure to renew shall invalidate the license and all privileges granted by the license. The board shall determine by rule whether a license shall be canceled for failure to renew and shall establish procedures and prerequisites for relicensure.

NEW SECTION. Sec. 15. (1) An individual may place his or her license on inactive status. The holder of an inactive license shall not practice denturism in this state without first activating the license.

(2) The inactive renewal fee shall be established by the

board. Failure to renew an inactive license shall result in cancellation in the same manner as failure to renew an active license results in cancellation.

(3) An inactive license may be placed in an active status upon compliance with rules established by the board.

(4) The provisions relating to denial, suspension, and revocation of a license are applicable to an inactive license, except that when proceedings to suspend or revoke an inactive license have been initiated, the license shall remain inactive until the proceedings have been completed.

NEW SECTION. Sec. 16. Notwithstanding any other provision of state law, a licensed denturist may enter into a partnership or other business association with a dentist, provided that such association does not impede the independent professional judgment of either party.

NEW SECTION. Sec. 17. This chapter may be known and cited as the Washington state denturist act.

Sec. 18. RCW 18.120.020 and 1989 c 300 s 14 are each amended to read as follows:

The definitions contained in this section shall apply throughout this chapter unless the context clearly requires otherwise.

(1) "Applicant group" includes any health professional group or organization, any individual, or any other interested party which proposes that any health professional group not presently regulated be regulated or which proposes to substantially increase the scope of practice of the profession.

(2) "Certificate" and "certification" mean a voluntary process by which a statutory regulatory entity grants recognition to an individual who (a) has met certain prerequisite qualifications specified by that regulatory entity, and (b) may assume or use "certified" in the title or designation to perform prescribed health professional tasks.

(3) "Grandfather clause" means a provision in a regulatory statute applicable to practitioners actively engaged in the regulated health profession prior to the effective date of the regulatory statute which exempts the practitioners from meeting the prerequisite qualifications set forth in the regulatory statute to perform prescribed occupational tasks.

(4) "Health professions" means and includes the following health and health-related licensed or regulated professions and occupations: ((Podiatry)) podiatric medicine and surgery under chapter 18.22 RCW; chiropractic under chapters 18.25 and 18.26 RCW; dental hygiene under chapter 18.29 RCW; dentistry under chapter 18.32 RCW; denturism under chapter 18.— RCW (sections 2 through 17 of this act); dispensing opticians under chapter 18.34 RCW; hearing aids under chapter 18.35 RCW; naturopaths under chapter 18.36A RCW; embalming and funeral directing under chapter 18.39 RCW; midwifery under chapter 18.50 RCW; nursing home administration under chapter 18.52 RCW; optometry under chapters 18.53 and 18.54 RCW; ocularists under chapter



COMPLETE TEXT OF Initiative Measure 607 (cont.)

18.55 RCW; osteopathy and osteopathic medicine and surgery under chapters 18.57 and 18.57A RCW; pharmacy under chapters 18.64 and 18.64A RCW; medicine under chapters 18.71, 18.71A, and 18.72 RCW; emergency medicine under chapter 18.73 RCW; physical therapy under chapter 18.74 RCW; practical nurses under chapter 18.78 RCW; psychologists under chapter 18.83 RCW; registered nurses under chapter 18.88 RCW; occupational therapists licensed pursuant to chapter 18.59 RCW; respiratory care practitioners certified under chapter 18.89 RCW; veterinarians and animal technicians under chapter 18.92 RCW; health care assistants under chapter 18.135 RCW; massage practitioners under chapter 18.108 RCW; acupuncturists certified under chapter 18.06 RCW; persons registered or certified under chapter 18.19 RCW; dietitians and nutritionists certified by chapter 18.138 RCW; radiologic technicians under chapter 18.84 RCW; and nursing assistants registered or certified under chapter 18.88A RCW.

(5) "Inspection" means the periodic examination of practitioners by a state agency in order to ascertain whether the practitioners' occupation is being carried out in a fashion consistent with the public health, safety, and welfare.

(6) "Legislative committees of reference" means the standing legislative committees designated by the respective rules committees of the senate and house of representatives to consider proposed legislation to regulate health professions not previously regulated.

(7) "License," "licensing," and "licensure" mean permission to engage in a health profession which would otherwise be unlawful in the state in the absence of the permission. A license is granted to those individuals who meet prerequisite qualifications to perform prescribed health professional tasks and for the use of a particular title.

(8) "Professional license" means an individual, nontransferable authorization to carry on a health activity based on qualifications which include: (a) Graduation from an accredited or approved program, and (b) acceptable performance on a qualifying examination or series of examinations.

(9) "Practitioner" means an individual who (a) has achieved knowledge and skill by practice, and (b) is actively engaged in a specified health profession.

(10) "Public member" means an individual who is not, and never was, a member of the health profession being regulated or the spouse of a member, or an individual who does not have and never has had a material financial interest in either the rendering of the health professional service being regulated or an activity directly related to the profession being regulated.

(11) "Registration" means the formal notification which, prior to rendering services, a practitioner shall submit to a

state agency setting forth the name and address of the practitioner; the location, nature and operation of the health activity to be practiced; and, if required by the regulatory entity, a description of the service to be provided.

(12) "Regulatory entity" means any board, commission, agency, division, or other unit or subunit of state government which regulates one or more professions, occupations, industries, businesses, or other endeavors in this state.

(13) "State agency" includes every state office, department, board, commission, regulatory entity, and agency of the state, and, where provided by law, programs and activities involving less than the full responsibility of a state agency.

Sec. 19. RCW 18.130.040 and 1993 c 367 s 4 are each amended to read as follows:

(1) This chapter applies only to the secretary and the boards having jurisdiction in relation to the professions licensed under the chapters specified in this section. This chapter does not apply to any business or profession not licensed under the chapters specified in this section.

(2) (a) The secretary has authority under this chapter in relation to the following professions:

- (i) Dispensing opticians licensed under chapter 18.34 RCW;
- (ii) Naturopaths licensed under chapter 18.36A RCW;
- (iii) Midwives licensed under chapter 18.50 RCW;
- (iv) Ocularists licensed under chapter 18.55 RCW;
- (v) Massage operators and businesses licensed under chapter 18.108 RCW;
- (vi) Dental hygienists licensed under chapter 18.29 RCW;
- (vii) Acupuncturists certified under chapter 18.06 RCW;
- (viii) Radiologic technologists certified under chapter 18.84 RCW;
- (ix) Respiratory care practitioners certified under chapter 18.89 RCW;
- (x) Persons registered or certified under chapter 18.19 RCW;
- (xi) Persons registered as nursing pool operators;
- (xii) Nursing assistants registered or certified under chapter 18.88A RCW;
- (xiii) Health care assistants certified under chapter 18.135 RCW;
- (xiv) Dietitians and nutritionists certified under chapter 18.138 RCW;
- (xv) Sex offender treatment providers certified under chapter 18.155 RCW; and
- (xvi) Persons licensed and certified under chapter 18.73 RCW or RCW 18.71.205.

(b) The boards having authority under this chapter are as follows:

- (i) The podiatric medical board as established in chapter 18.22 RCW;
- (ii) The chiropractic disciplinary board as established in chapter 18.26 RCW governing licenses issued under chapter 18.25 RCW;
- (iii) The dental disciplinary board as established in chapter



COMPLETE TEXT OF Initiative Measure 607 (cont.)

18.32 RCW;

(iv) The ~~((council on))~~ board on fitting and dispensing of hearing aids as established in chapter 18.35 RCW;

(v) The board of funeral directors and embalmers as established in chapter 18.39 RCW;

(vi) The board of examiners for nursing home administrators as established in chapter 18.52 RCW;

(vii) The optometry board as established in chapter 18.54 RCW governing licenses issued under chapter 18.53 RCW;

(viii) The board of osteopathic medicine and surgery as established in chapter 18.57 RCW governing licenses issued under chapters 18.57 and 18.57A RCW;

(ix) The board of pharmacy as established in chapter 18.64 RCW governing licenses issued under chapters 18.64 and 18.64A RCW;

(x) The medical disciplinary board as established in chapter 18.72 RCW governing licenses and registrations issued under chapters 18.71 and 18.71A RCW;

(xi) The board of physical therapy as established in chapter 18.74 RCW;

(xii) The board of occupational therapy practice as established in chapter 18.59 RCW;

(xiii) The board of practical nursing as established in chapter 18.78 RCW;

(xiv) The examining board of psychology and its disciplinary committee as established in chapter 18.83 RCW;

(xv) The board of nursing as established in chapter 18.88 RCW; ~~((and))~~

(xvi) The veterinary board of governors as established in chapter 18.92 RCW; and

(xvii) Denturists licensed under chapter 18.— RCW (sections 2 through 17 of this act).

(3) In addition to the authority to discipline license holders, the disciplining authority has the authority to grant or deny licenses based on the conditions and criteria established in this chapter and the chapters specified in subsection (2) of this section. However, the board of chiropractic examiners has authority over issuance and denial of licenses provided for in chapter 18.25 RCW, the board of dental examiners has authority over issuance and denial of licenses provided for in RCW 18.32.040, and the board of medical examiners has authority over issuance and denial of licenses and registrations provided for in chapters 18.71 and 18.71A RCW. This chapter also governs any investigation, hearing, or proceeding relating to denial of licensure or issuance of a license conditioned on the applicant's compliance with an order entered pursuant to RCW 18.130.160 by the disciplining authority.

NEW SECTION. Sec. 20. Sections 2 through 17 of this act

shall constitute a new chapter in Title 18 RCW.

NEW SECTION. Sec. 21. A new section is added to chapter 48.20 RCW to read as follows:

Notwithstanding any provision of any disability insurance contract covering dental care as provided for in this chapter, effective January 1, 1995, benefits shall not be denied thereunder for any service performed by a denturist licensed under chapter 18.— RCW (sections 2 through 17 of this act) if (1) the service performed was within the lawful scope of such person's license, and (2) such contract would have provided benefits if such service had been performed by a dentist licensed under chapter 18.32 RCW.

NEW SECTION. Sec. 22. A new section is added to chapter 48.21 RCW to read as follows:

Notwithstanding any provision of any group disability insurance contract or blanket disability insurance contract covering dental care as provided for in this chapter, effective January 1, 1995, benefits shall not be denied thereunder for any service performed by a denturist licensed under chapter 18.— RCW (sections 2 through 17 of this act) if (1) the service performed was within the lawful scope of such person's license, and (2) such contract would have provided benefits if such service had been performed by a dentist licensed under chapter 18.32 RCW.

NEW SECTION. Sec. 23. A new section is added to chapter 48.43 RCW to read as follows:

Notwithstanding any provision of any certified health plan covering dental care as provided for in this chapter, effective January 1, 1995, benefits shall not be denied thereunder for any service performed by a denturist licensed under chapter 18.— RCW (sections 2 through 17 of this act) if (1) the service performed was within the lawful scope of such person's license, and (2) such plan would have provided benefits if such service had been performed by a dentist licensed under chapter 18.32 RCW.

NEW SECTION. Sec. 24. A new section is added to chapter 48.44 RCW to read as follows:

Notwithstanding any provision of any health care service contract covering dental care as provided for in this chapter, effective January 1, 1995, benefits shall not be denied thereunder for any service performed by a denturist licensed under chapter 18.— RCW (sections 2 through 17 of this act) if (1) the service performed was within the lawful scope of such person's license, and (2) such contract would have provided benefits if such service had been performed by a dentist licensed under chapter 18.32 RCW.

NEW SECTION. Sec. 25. A new section is added to chapter 48.46 RCW to read as follows:

Notwithstanding any provision of any health maintenance organization agreement covering dental care as provided for



COMPLETE TEXT OF Initiative Measure 607 (cont.)

in this chapter, effective January 1, 1995, benefits shall not be denied thereunder for any service performed by a denturist licensed under chapter 18.—RCW (sections 2 through 17 of this act) if (1) the service performed was within the lawful scope of such person's license, and (2) such agreement would have provided benefits if such service had been performed by a dentist licensed under chapter 18.32 RCW.

NEW SECTION. Sec. 26. If any provision of this act or its application to any person or circumstance is held invalid, the remainder of the act or the application of the provision to other persons or circumstances is not affected.

PLEASE NOTE:

In the preceding and following measures, all words in double parentheses with a line through them are in the State Law at the present time and are being taken out by the measure. All words underlined do not appear in the State Law as it is now written but will be put in if the measure is adopted.

To obtain a copy of the texts of these state measures in larger print, call the Secretary of State's toll-free hotline -- 1-800-448-4881.



COMPLETE TEXT OF Referendum Bill 43

AN ACT Relating to violence prevention; amending RCW 66.24.210, 66.24.290, 82.08.150, 82.24.020, 82.64.010, 82.64.020, 82.64.030, 82.64.040; repealing RCW 82.64.060, and 82.64.900; providing an effective date; and providing for submission of this act to a vote of the people.

BE IT ENACTED BY THE LEGISLATURE OF THE STATE OF WASHINGTON:

PART IX. MISCELLANEOUS

Sec. 901. RCW 66.24.210 and 1993 c 160 s 2 are each amended to read as follows:

(1) There is hereby imposed upon all wines sold to wine wholesalers and the Washington state liquor control board, within the state a tax at the rate of twenty and one-fourth cents per liter: **PROVIDED, HOWEVER,** That wine sold or shipped in bulk from one winery to another winery shall not be subject to such tax. The tax provided for in this section may, if so prescribed by the board, be collected by means of stamps to be furnished by the board, or by direct payments based on wine purchased by wine wholesalers. Every person purchasing wine under the provisions of this section shall on or before the twentieth day of each month report to the board all purchases during the preceding calendar month in such manner and upon such forms as may be prescribed by the board, and with such report shall pay the tax due from the purchases covered by such report unless the same has previously been paid. Any such purchaser of wine whose applicable tax payment is not postmarked by the twentieth day following the month of purchase will be assessed a penalty at the rate of two percent a month or fraction thereof. If this tax be collected by means of stamps, every such person shall procure from the board revenue stamps representing the tax in such form as the board shall prescribe and shall affix the same to the package or container in such manner and in such denomination as required by the board and shall cancel the same prior to the delivery of the package or container containing the wine to the purchaser. If the tax is not collected by means of stamps, the board may require that every such person shall execute to and file with the board a bond to be approved by the board, in such amount as the board may fix, securing the payment of the tax. If any such person fails to pay the tax when due, the board may forthwith suspend or cancel the license until all taxes are paid.

(2) An additional tax is imposed equal to the rate specified in RCW 82.02.030 multiplied by the tax payable under subsection (1) of this section. All revenues collected during any month from this additional tax shall be transferred to the state general fund by the twenty-fifth day of the following month.

(3) An additional tax is imposed on wines subject to tax under subsection (1) of this section, at the rate of one-fourth of one cent per liter for wine sold after June 30, 1987. Such additional tax shall cease to be imposed on July 1, 2001. All revenues collected under this subsection (3) shall be disbursed quarterly to the Washington wine commission for use in carrying out the purposes of chapter 15.88 RCW.

(4) ~~((Until July 1, 1995,))~~ An additional tax is imposed on all wine subject to tax under subsection (1) of this section. The additional tax is equal to twenty-three and forty-four one-hundredths cents per liter on fortified wine as defined in RCW 66.04.010(34) when bottled or packaged by the manufacturer and one cent per liter on all other wine. All revenues collected during any month from this additional tax shall be deposited in the violence reduction and drug enforcement ~~((and education))~~ account under RCW 69.50.520 by the twenty-fifth day of the following month.



COMPLETE TEXT OF Referendum Bill 43 (cont.)

Sec. 902. RCW 66.24.290 and 1993 c 492 s 311 are each amended to read as follows:

(1) Any brewer or beer wholesaler licensed under this title may sell and deliver beer to holders of authorized licenses direct, but to no other person, other than the board; and every such brewer or beer wholesaler shall report all sales to the board monthly, pursuant to the regulations, and shall pay to the board as an added tax for the privilege of manufacturing and selling the beer within the state a tax of two dollars and sixty cents per barrel of thirty-one gallons on sales to licensees within the state and on sales to licensees within the state of bottled and canned beer shall pay a tax computed in gallons at the rate of two dollars and sixty cents per barrel of thirty-one gallons. Any brewer or beer wholesaler whose applicable tax payment is not postmarked by the twentieth day following the month of sale will be assessed a penalty at the rate of two percent per month or fraction thereof. Each such brewer or wholesaler shall procure from the board revenue stamps representing such tax in form prescribed by the board and shall affix the same to the barrel or package in such manner and in such denominations as required by the board, and shall cancel the same prior to commencing delivery from his or her place of business or warehouse of such barrels or packages. Beer shall be sold by brewers and wholesalers in sealed barrels or packages. The revenue stamps provided under this section need not be affixed and canceled in the making of resales of barrels or packages already taxed by the affixation and cancellation of stamps as provided in this section.

(2) An additional tax is imposed equal to seven percent multiplied by the tax payable under subsection (1) of this section. All revenues collected during any month from this additional tax shall be transferred to the state general fund by the twenty-fifth day of the following month.

(3) ~~((Until July 1, 1995;))~~ An additional tax is imposed on all beer subject to tax under subsection (1) of this section. The additional tax is equal to two dollars per barrel of thirty-one gallons. All revenues collected during any month from this additional tax shall be deposited in the violence reduction and drug enforcement ~~((and education))~~ account under RCW 69.50.520 by the twenty-fifth day of the following month.

(4)(a) An additional tax is imposed on all beer subject to tax under subsection (1) of this section. The additional tax is equal to ninety-six cents per barrel of thirty-one gallons through June 30, 1995, two dollars and thirty-nine cents per barrel of thirty-one gallons for the period July 1, 1995, through June 30, 1997, and four dollars and seventy-eight cents per barrel of thirty-one gallons thereafter.

(b) The additional tax imposed under this subsection does not apply to the sale of the first sixty thousand barrels of beer

each year by breweries that are entitled to a reduced rate of tax under 26 U.S.C. Sec. 5051, as existing on July 1, 1993, or such subsequent date as may be provided by the board by rule consistent with the purposes of this exemption.

(c) All revenues collected from the additional tax imposed under this subsection (4) shall be deposited in the health services account under RCW 43.72.900.

(5) The tax imposed under this section shall not apply to "strong beer" as defined in this title.

Sec. 903. RCW 82.08.150 and 1993 c 492 s 310 are each amended to read as follows:

(1) There is levied and shall be collected a tax upon each retail sale of spirits, or strong beer in the original package at the rate of fifteen percent of the selling price. The tax imposed in this subsection shall apply to all such sales including sales by the Washington state liquor stores and agencies, but excluding sales to class H licensees.

(2) There is levied and shall be collected a tax upon each sale of spirits, or strong beer in the original package at the rate of ten percent of the selling price on sales by Washington state liquor stores and agencies to class H licensees.

(3) There is levied and shall be collected an additional tax upon each retail sale of spirits in the original package at the rate of one dollar and seventy-two cents per liter. The additional tax imposed in this subsection shall apply to all such sales including sales by Washington state liquor stores and agencies, and including sales to class H licensees.

(4) An additional tax is imposed equal to fourteen percent multiplied by the taxes payable under subsections (1), (2), and (3) of this section.

(5) ~~((Until July 1, 1995;))~~ An additional tax is imposed upon each retail sale of spirits in the original package at the rate of seven cents per liter. The additional tax imposed in this subsection shall apply to all such sales including sales by Washington state liquor stores and agencies, and including sales to class H licensees. All revenues collected during any month from this additional tax shall be deposited in the violence reduction and drug enforcement ~~((and education))~~ account under RCW 69.50.520 by the twenty-fifth day of the following month.

(6)(a) An additional tax is imposed upon retail sale of spirits in the original package at the rate of one and seven-tenths percent of the selling price through June 30, 1995, two and six-tenths percent of the selling price for the period July 1, 1995, through June 30, 1997, and three and four-tenths of the selling price thereafter. This additional tax applies to all such sales including sales by Washington state liquor stores and agencies, but excluding sales to class H licensees.

(b) An additional tax is imposed upon retail sale of spirits in the original package at the rate of one and one-tenth percent of the selling price through June 30, 1995, one and seven-tenths percent of the selling price for the period July 1, 1995, through June 30, 1997, and two and three-tenths of the selling price thereafter. This additional tax applies to all such



COMPLETE TEXT OF Referendum Bill 43 (cont.)

sales to class H licensees.

(c) An additional tax is imposed upon each retail sale of spirits in the original package at the rate of twenty cents per liter through June 30, 1995, thirty cents per liter for the period July 1, 1995, through June 30, 1997, and forty-one cents per liter thereafter. This additional tax applies to all such sales including sales by Washington state liquor stores and agencies, and including sales to class H licensees.

(d) All revenues collected during any month from additional taxes under this subsection shall be deposited in the health services account created under RCW 43.72.900 by the twenty-fifth day of the following month.

(7) The tax imposed in RCW 82.08.020 shall not apply to sales of spirits or strong beer in the original package.

(8) The taxes imposed in this section shall be paid by the buyer to the seller, and each seller shall collect from the buyer the full amount of the tax payable in respect to each taxable sale under this section. The taxes required by this section to be collected by the seller shall be stated separately from the selling price and for purposes of determining the tax due from the buyer to the seller, it shall be conclusively presumed that the selling price quoted in any price list does not include the taxes imposed by this section.

(9) As used in this section, the terms, "spirits," "strong beer," and "package" shall have the meaning ascribed to them in chapter 66.04 RCW.

Sec. 904. RCW 82.24.020 and 1993 c 492 s 307 are each amended to read as follows:

(1) There is levied and there shall be collected as provided in this chapter, a tax upon the sale, use, consumption, handling, possession or distribution of all cigarettes, in an amount equal to the rate of eleven and one-half mills per cigarette.

(2) ~~((Until July 1, 1995;))~~ An additional tax is imposed upon the sale, use, consumption, handling, possession, or distribution of all cigarettes, in an amount equal to the rate of ~~((one and one-half))~~ five and one-fourth mills per cigarette. All revenues collected during any month from this additional tax shall be deposited in the violence reduction and drug enforcement ~~((and education))~~ account under RCW 69.50.520 by the twenty-fifth day of the following month.

(3) An additional tax is imposed upon the sale, use, consumption, handling, possession, or distribution of all cigarettes, in an amount equal to the rate of ten mills per cigarette through June 30, 1994, eleven and one-fourth mills per cigarette for the period July 1, 1994, through June 30, 1995, twenty mills per cigarette for the period July 1, 1995, through June 30, 1996, and twenty and one-half mills per cigarette thereafter. All revenues collected during any month from this

additional tax shall be deposited in the health services account created under RCW 43.72.900 by the twenty-fifth day of the following month.

(4) Wholesalers and retailers subject to the payment of this tax may, if they wish, absorb one-half mill per cigarette of the tax and not pass it on to purchasers without being in violation of this section or any other act relating to the sale or taxation of cigarettes.

(5) For purposes of this chapter, "possession" shall mean both (a) physical possession by the purchaser and, (b) when cigarettes are being transported to or held for the purchaser or his or her designee by a person other than the purchaser, constructive possession by the purchaser or his or her designee, which constructive possession shall be deemed to occur at the location of the cigarettes being so transported or held.

Sec. 905. RCW 82.64.010 and 1991 c 80 s 1 are each amended to read as follows:

Unless the context clearly requires otherwise, the definitions in this section apply throughout this chapter.

(1) "Carbonated beverage" has its ordinary meaning and includes any nonalcoholic liquid intended for human consumption which contains carbon dioxide, whether carbonation is obtained by natural or artificial means.

(2) "Previously taxed ~~((carbonated beverage or))~~ syrup" means ~~((a carbonated beverage or))~~ syrup in respect to which a tax has been paid under this chapter. ~~((A "previously taxed carbonated beverage" includes carbonated beverages in respect to which a tax has been paid under this chapter on the carbonated beverage or on the syrup in the carbonated beverage.))~~

(3) "Syrup" means a concentrated liquid which is added to carbonated water to produce a carbonated beverage.

(4) Except for terms defined in this section, the definitions in chapters 82.04, 82.08, and 82.12 RCW apply to this chapter.

Sec. 906. RCW 82.64.020 and 1991 c 80 s 2 are each amended to read as follows:

(1) A tax is imposed on each sale at wholesale of ~~((a carbonated beverage or))~~ syrup in this state. The rate of the tax shall be equal to ~~((eighty-four one-thousandths of a cent per ounce for carbonated beverages and seventy-five cents))~~ one dollar per gallon ((for syrups)). Fractional amounts shall be taxed proportionally.

(2) A tax is imposed on each sale at retail of ~~((a carbonated beverage or))~~ syrup in this state. The rate of the tax shall be equal to the rate imposed under subsection (1) of this section.

(3) Moneys collected under this chapter shall be deposited in the violence reduction and drug enforcement ~~((and education))~~ account under RCW 69.50.520.

(4) Chapter 82.32 RCW applies to the taxes imposed in this chapter. The tax due dates, reporting periods, and return requirements applicable to chapter 82.04 RCW apply equally



COMPLETE TEXT OF Referendum Bill 43 (cont.)

to the taxes imposed in this chapter.

Sec. 907. RCW 82.64.030 and 1991 c 80 s 3 are each amended to read as follows:

The following are exempt from the taxes imposed in this chapter:

(1) Any successive sale of a previously taxed ~~((carbonated beverage or))~~ syrup.

(2) Any ~~((carbonated beverage or))~~ syrup that is transferred to a point outside the state for use outside the state. The department shall provide by rule appropriate procedures and exemption certificates for the administration of this exemption.

(3) Any sale at wholesale of a trademarked ~~((carbonated beverage or))~~ syrup by any person to a person commonly known as a bottler who is appointed by the owner of the trademark to manufacture, distribute, and sell such trademarked ~~((carbonated beverage or))~~ syrup within a specified geographic territory.

(4) Any sale of ~~((carbonated beverage or))~~ syrup in respect to which a tax on the privilege of possession was paid under this chapter before June 1, 1991.

Sec. 908. RCW 82.64.040 and 1991 c 80 s 7 are each amended to read as follows:

(1) Credit shall be allowed, in accordance with rules of the department, against the taxes imposed in this chapter for any ~~((carbonated beverage or))~~ syrup tax paid to another state with respect to the same ~~((carbonated beverage or))~~ syrup. The amount of the credit shall not exceed the tax liability arising under this chapter with respect to that ~~((carbonated~~

~~beverage or))~~ syrup.

(2) For the purpose of this section:

(a) "~~((Carbonated beverage or))~~ Syrup tax" means a tax:

(i) That is imposed on the sale at wholesale of ~~((carbonated beverages or))~~ syrup and that is not generally imposed on other activities or privileges; and

(ii) That is measured by the volume of the ~~((carbonated beverage or))~~ syrup.

(b) "State" means (i) a state of the United States other than Washington, or any political subdivision of such other state, (ii) the District of Columbia, and (iii) any foreign country or political subdivision thereof.

NEW SECTION. Sec. 909. The following acts or parts of acts are each repealed:

(1) RCW 82.64.060 and 1991 c 80 s 5; and

(2) RCW 82.64.900 and 1989 c 271 s 509.

NEW SECTION. Sec. 911. Sections 901 through 909 of this act shall be submitted as a single ballot measure to the people for their adoption and ratification, or rejection, at the next succeeding general election to be held in this state, in accordance with Article II, section 1 of the state Constitution, as amended, and the laws adopted to facilitate the operation thereof unless section 13, chapter 2, Laws of 1994, has been declared invalid or otherwise enjoined or stayed by a court of competent jurisdiction.

NEW SECTION. Sec. 912. Sections 905 through 908 of this act shall not be construed as affecting any existing right acquired or liability or obligation incurred, nor as affecting any proceeding instituted under those sections, before the effective date of sections 905 through 908 of this act.

NEW SECTION. Sec. 915. (2) Sections 904 through 908 of this act shall take effect July 1, 1995.

PROJECT VOTE SMART

Additional information about candidates for federal office is available free to Washington voters from Project Vote Smart, a national, non-partisan program started in 1992. This includes information about voting records, campaign finances, past and current position statements and performance evaluations. Voters can telephone Project Vote Smart at 1-800-622-7627.

United States Senator



Dear Washingtonian,

Long ago, I asked my father, a Spokane minister, whether I should follow his steps into the ministry or turn to public service. He advised service. Today, after graduating from Central Washington University in Ellensburg, and working for the Washington Attorney General, the Federal Trade Commission, and the Washington State Senate, I am serving my third term on the King County Council. At 46, I am a candidate for the U.S. Senate because I want to fight for hardworking middle class families, for our children, and for seniors.

I have tried to live a life of service in my job, as a husband and father of three, and in my community as a volunteer school tutor, a lay minister for Operation Nightwatch working to help young people get off the streets, as a coach, and as a volunteer hospital chaplain for the terminally ill.

Public safety and fiscal responsibility were my priorities as Chair of the Council's Finance Committee. I added police, pioneered the use of DNA coding and an Automated Fingerprint Identification System, and created a registry of convicted sex predators. I made sure funding for senior services and programs for women and children continued, but by holding the line on spending I created new financial reserves and earned King County one of the nation's top credit ratings.

I have tried to say with my life that our echoing footsteps will create our children's tomorrows. I want to be a Senator whose hands and heart and mind will be there for all of us. Please help me with your vote.

Thank you,
Ron Sims

Endorsed By: The Washington Education Association, Washington Federation of Teachers, Sierra Club, National Organization for Women, International Association of Machinists and Aerospace Workers, and eighteen other organizations representing Washington's working families.



**Ron
SIMS**
Democrat

Campaign Address:
Ron Sims for U.S. Senate
233 6th Avenue N.
Seattle, WA 98109
Telephone: (206) 448-7010



United States Senator



**Slade
GORTON**
Republican

A fire burns within me because I know that if I and a few more like-minded people are elected to the U.S. Senate this year we can begin turning things around for a safer and more prosperous Washington state and America.

The direction being set by today's dominant majority in Washington D.C. is wrong. I believe passionately that there is a better way. Their way is toward a more centralized and expensive federal government. Their way takes money and choices away from families and communities. They want to decide 3,000 miles away what is best for us in our neighborhoods, schools and doctors' offices. Their way means less freedom, fewer choices, decreased individual responsibility, more taxes and deficits.

This is your choice: If you want just another Senator who will support the majority that dominates Washington D.C. today, vote for my opponent. But, if you agree with me that there is a better way and you want a voice to balance today's majority — then I would appreciate your vote because mine is a different direction.

My agenda is simple: I work for jobs, personal safety and a clean Washington state.

My faith is not in centralized federal decisions. Instead I believe in the ability of people, families and communities to decide better for themselves. Whether the issue is education, creating jobs, health care, or fighting crime — my faith is in you. My direction is toward empowering you and your family to give you the maximum freedom to make the best choices about your own life and your own future. I work for you.

Do you want one more Senator who thinks like the dominant majority or do you want Slade Gorton — a voice for balance and a different direction?

United States Representative

Fourth Congressional District



**Jay
INSLEE**

Democrat

Campaign Address:
Inslee for Congress
P.O. Box 686
Selah, WA 98942
Telephone: (509) 453-4263

Two years ago the folks of Central Washington sent an independent voice back to the Capitol to work for the common sense values that we share.

Now it can be said that I have worked to make a real difference.



**Doc
HASTINGS**

Republican

Campaign Address:
Hastings '94
P.O. Box 2926
Pasco, WA 99302

Two years ago Americans thought they were voting for change. What they received wasn't the change they had hoped for. Congress and the President are responsible for this failure of hope.

We can't afford to make the same mistake again. That's why all Republican Congressional candidates met and promised a

The people said that we must reduce the federal deficit, so I voted for the Balanced Budget Amendment, the Modified Line Item Veto, and *against* the President's budget and tax bill.

Our neighbors know that we must reduce illegal immigration, so I amended the Crime Bill to expedite deportation of illegal immigrants in our jails. I have fought aggressively to improve our efforts on our border and I intend to continue that fight.

The people want Congress to be reformed so I helped pass a bill making Congress subject to employment and other laws. I also cut my office expenses by over \$150,000.

As the father of three boys, I know how important our families are, so I voted for the Family Leave Bill and Early Childhood Education Bill.

When my farmers needed water, I sponsored and passed through the House, the Yakima River Enhancement bill, which will help irrigators. Now, we need to fight those who would attempt to use the water spreading argument to deny our farmers their rightful use of water.

Fighting for the Hanford community is of the utmost importance. Our Hanford Team has preserved the Hanford budget, started EMSL, and allowed us to fight for the right to a hiring preference for Hanford workers.

We ought to assure that Senior Citizens receive the benefits that they need. I want to continue working to improve veterans access to medical care in Central Washington.

I am asking for your vote so that I can keep fighting for Central Washington. Thank you.

"Republican Contract with America." A pledge to offer a revolutionary yet common sense agenda of real changes and real reforms in the next Congress.

First, we need to get our financial house in order. *The only way to accomplish this is to amend the Constitution to require a balanced budget.* President Clinton's budgets will increase our national debt by \$1 trillion dollars by the year 1999. This isn't change and it is unacceptable for future generations.

We need to reform Congress by enacting term limits, cutting congressional staff, and reducing the authority of committee chairs by limiting the time they can serve in that capacity.

For years the farmers and foresters of Central Washington have been the caretakers of the earth. They've produced lumber for our schools and homes, and have grown food for our tables. *Now, environmental extremism is threatening our agriculture industry. I'll work to amend the Endangered Species Act to put people first.* Common sense must prevail on this issue.

The Hanford clean-up must be kept efficiently on track and the ensuing technology transfer must be part of that effort.

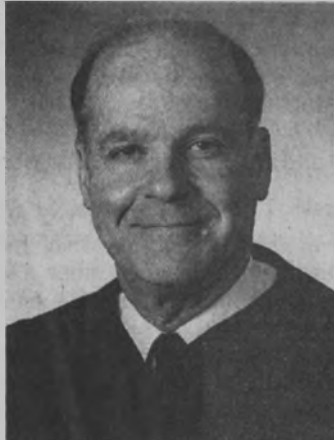
I'm not a professional politician. I'm a small businessman. But I did serve my community in Olympia as a State Legislator. After four terms, I left the legislature and returned home to run my business and spend more time with my family.

My commitment is to take the same honest values I learned growing up to Washington, D.C. I'm asking for your vote to become your Congressman.



Justice of the Supreme Court

Position 2



Gerry L. **ALEXANDER**

Nonpartisan

Campaign Address:
Alexander for Supreme Court
Committee
525 Columbia N.W., Suite 202
Olympia, WA 98501
Telephone: (206) 756-0447

"Court of Appeals Judge Gerry Alexander has the experience and integrity to be a great Justice on our Supreme Court." - *Retired Justice Robert Hunter*

Judge Alexander is endorsed by 6 of 7 retired Supreme Court Justices, many County Prosecutors, law enforcement leaders, organizations, and hundreds of individuals from across the state.

Judicial Experience - Judge Alexander is the *most experienced* judge running for this position, having served 10 years on the Washington Court of Appeals and 11 years on the Thurston-Mason County Superior Court. He taught Legal Ethics at the University of Puget Sound Law School and served as *Judge Pro Tempore* on the *Supreme Court*. The State Bar Association gave its *Highest Rating* for his appointment to the Supreme Court.

Community Leadership - Judge Alexander is Past President of Thurston County United Way, Olympia area YMCA, Capital Marathon Association, and State Capital Historical Association; a past Board Member of the Thurston County Crisis Clinic and past Moderator of United Churches of Olympia.

Personal Achievement - Born in Washington; attended public schools in Aberdeen and Olympia; graduate of University of Washington and its law school. He served as an Army infantry officer and is the proud father of three children.



Janice **NIEMI**

Nonpartisan

Campaign Address:
Janice Niemi for
Supreme Court
P.O. Box 20516
Seattle, WA 98102
Telephone: (206) 323-2619

Janice Niemi will protect our legal rights. She is uniquely qualified to serve on the Supreme Court. She has experience as a judge, a legislator and a community leader. Niemi offers common sense with an outstanding record of public service. Her experience has taught her to listen and to understand the wide variety of interests we have in this State. She understands that the law must represent real people as well as high ideals.

Balanced Experience - Janice Niemi served as a District Court Judge and Superior Court Judge for 7 1/2 years. She was Presiding Judge of Seattle District Court, President of her local PTA, a volunteer on the Central Area School Council, and served as a State Representative and Senator.

Compassion and Strength - Niemi's judicial experience, community leadership and legislative service make her exceptionally qualified to serve on our highest court. She has received the highest rating of the Seattle Police Guild, from officers who regularly appear before her. We need Janice Niemi because she listens, is fair-minded, and cares about issues affecting our daily lives.

Raised in Spokane, Niemi received her law degree from the University of Washington. She is the mother of two children.

Justice of the Supreme Court

Position 3



**Phil
TALMADGE**

Nonpartisan

Campaign Address:
Committee to Elect
Phil Talmadge
P.O. Box 46417
Seattle, WA 98146
Telephone: (206) 340-4616

Phil Talmadge, an experienced legislator and nationally-honored appeals lawyer, knows that the Supreme Court, like other governmental institutions, must change to serve us:

Work Harder for Justice - Our appellate courts are congested. Some cases wait for more than a year to be decided. That's too long. The Supreme Court should work with the Court of Appeals, taking more cases to reduce the backlog.

More Affordable Justice - Arbitration and mediation should be used more often as an alternative to traditional litigation, which can be expensive and traumatic for those seeking justice.

Concern for Children, Families and Crime Victims - The courts need to be sensitive to the needs of crime victims, children, and families. Phil, who wrote the laws against child abuse and domestic violence, knows that the administration of our juvenile justice system must be improved.

Phil's campaign has received support from the State Council of Police Officers, the State Patrol Troopers Association, the Washington Council of Firefighters, the State Labor Council, the Federation of State Employees, the Hispanic Bar Association and the Seattle Firefighters. Phil is rated "exceptionally well qualified" by the Loren Miller Bar Association and Washington Women Lawyers.



**Jeanette
BURRAGE**

Nonpartisan

Campaign Address:
Friends of Jeanette Burrage
557 Roy Street, Suite 95
Seattle, WA 98109
Telephone: (206) 824-1405

Proven Leadership -

Jeanette Burrage will protect the constitutional liberties guaranteed to everyone. As Executive Director of the Northwest Legal Foundation, Burrage has assisted people directly and through management of the foundation. The mission of the foundation is to protect individual rights including private property rights. One of her goals is to make the law more easily understood.

Balanced Experience -

Jeanette Burrage has practiced land use and privacy rights law. Her law degree is from the University of Washington. She has been an accountant, budget analyst and a financial consultant, as well as assistant to Federal Appeals Court Judge Eugene A. Wright.

Burrage served as a Washington State Representative in 1981-82, and is currently a councilwoman for Des Moines, Washington. **Will Bring Common Sense to Washington's Highest Court -**

Jeanette Burrage will combine practical knowledge and legal experience in making judgments. She is the mother of two sons. With her husband she has assisted with community service projects through the West Seattle Jaycees.

Mrs. Burrage has been a board member of the Senior Center of West Seattle, and Citizens to Save Puget Sound. She has a track record for getting things done. Jeanette Burrage will make an outstanding State Supreme Court Justice.



State Senator

Thirteenth Legislative District



Mike WILLIAMS

Democrat

Campaign Address:
Mike Williams for State Senate
P.O. Box 1492
Ellensburg, WA 98926-1492
Telephone: (509) 925-4033

We don't need more Puget Sound programs wasting time and money here in Central Washington. As your state senator, Mike will deliver on:

Water: Washington is blessed with abundant water, but new demand exceeds available supplies. We must sort it out, protect our agricultural water supplies, and provide for growth of our communities. Mike Williams is a leader on state water policy, he understands the issues and will produce results.

Jobs: It's a tragedy that one of our greatest exports is our children. If the jobs aren't here, they are forced to move away. Mike has 10 years of proven experience with rural economic development.

Streamlining Government: State government must regain the confidence of the taxpayer by reducing regulatory burdens and increasing accountability. On the Ellensburg City Council and the Governor's Regulatory Reform Task Force, Mike is at the front of the movement for more responsive and fiscally responsible government.

Mike Williams is a 17 year resident of central Washington. He's been involved with more than 17 community organizations, has served in the Air Force and is a Southeast Asia Vet. Mike and his wife, Debbie, have two children.

Mike Williams for solutions that will help us - not cost us.



Harold HOCHSTATTER

Republican

Campaign Address:
Harold Hochstatter for
State Senate
2104 Marina Drive
Moses Lake, WA 98837
Telephone: (509) 765-8164

Instead of doing things badly, government needs to do a few things well. All children must learn to read English. Schools must never fail at literacy. Laws should apprehend criminals, not law abiding citizens. We should respect juries. Their verdicts should be executed promptly. Welfare destroys people and families. In the Senate I have been working to replace dependence with jobs. Government's regulatory war against business and farms makes us all poorer. Strong business means good jobs and a strong economy. Without a healthy economy all our institutions suffer, families and governments, businesses and farms. We are seeing proof of this around the world and its just as true here in Washington.

I'm a citizen legislator. When my duties in Olympia are over, I return to electrical contracting. My employees and I know how hard taxpayers work for their money. Paula and I, married for 31 years have 5 children. Will they live as well as we? Will they be as free, as safe, or as well educated? I hope you are concerned about these things. I am, and I am asking for your vote to make it happen. Look for my name, Harold Hochstatter on your ballot Nov. 8th.

State Representative

Thirteenth Legislative District



P
O
S
I
T
I
O
N
1

No
Photograph
Submitted

Pamela KURSAVE

Democrat

Campaign Address:
Committee to Elect
Pamela Kursave
4745 Road 7.8 N.E.
Moses Lake, WA 98837
Telephone: (509) 762-5263

Pamela Kursave has been committed to community service with her involvement as a reserve deputy, firefighter, EMT, and search and rescue member. Raised in Eastern Washington, Pamela has great concerns about water issues, our justice system, welfare reform, and health care. Pamela believes in a system for all the people, not special interest groups.



Gary CHANDLER

Republican

Campaign Address:
Committee to Re-elect
Gary Chandler
4488 Dunn Street
Moses Lake, WA 98837
Telephone: (509) 765-5057

I sincerely appreciate your past support. Together we must continue to work for the 13th District and the state. It is absolutely necessary that we continue to fight for common sense health care. It is essential that we continue to fight for common sense solutions to crime. And, we have to circumvent any attempts at a state income tax. I welcome the opportunity to continue to use my experience for you.

P
O
S
I
T
I
O
N
2



Mick HANSEN

Democrat

Campaign Address:
Committee to Elect
Mick Hansen
715 W. 3rd Avenue
Moses Lake, WA 98837
Telephone: (509) 766-0143

Mick Hansen, a lifetime resident of Moses Lake, is seeking a second term. His philosophy is that State government should be run like any business - efficient and competitive. Hard work, common sense and vision have made him a successful small business man and an outstanding legislator. He is known as fair and bi-partisan in his approach to solving problems.

Education is his #1 priority along with protecting our farm economy. He strongly supports more work camps to rehabilitate juvenile offenders.

Mick is a steady, solid, proven leader for Central Washington. He has earned your support for re-election.



Joyce MULLIKEN

Republican

Campaign Address:
Mulliken for State
Representative Committee
130 H Street S.E.
Ephrata, WA 98823
Telephone: (509) 754-3250

Statements like this are important. How I vote is more important. But, most important of all is that *how I vote and what I say* agree. Anything less is irresponsible.

You and I have the same concerns: providing strong academics, providing swift and certain punishment to criminals, protecting businesses and farms from over regulation, and protecting water and property rights.

By listening to your concerns, then providing common sense leadership to respond, I believe I can represent you well in Olympia.

I'm Joyce Mulliken. I will work hard to put the needs of the people in our district first.



State Representative

Fourteenth Legislative District

P
O
S
I
T
I
O
N
1



Joe WALKENHAUER

Democrat

Campaign Address:
Committee to Elect
Joe Walkenhauer
2506 Fruitvale Boulevard
Yakima, WA 98902
Telephone: (509) 248-9070

Joe has lived in the Yakima Valley all of his life. He's a graduate of YVCC and Eastern Washington University, and served three years proudly in the U.S. Army.

Joe has worked in Valley industries; a rancher for over 20 years. Currently he and his sons are self-employed general contractors.

His goals are to bring good jobs to the Valley, strong regulatory reform that stops government intrusion in our lives and businesses, stricter criminal penalties, improving education, welfare reform, and a health care plan that meets the needs of the people and business.

Joe supports improving Yakima's quality of life.



Mary SKINNER

Republican

Campaign Address:
Committee for
Mary Skinner
P.O. Box 2246
Yakima, WA 98907
Telephone: (509) 965-3056

Mary Skinner was a teacher and is a 20 year volunteer in our state and local community. She is aware of the issues facing Yakima County and Washington State, and sees workable solutions to our problems.

Mary will be an effective, knowledgeable voice for all citizens of the 14th Legislative District. She will work for reasonable solutions to problems of Health Care Reform, Crime, Education, Government Spending, and the over-regulation of Agriculture and Business.

Mary will be an open, available, listening legislator, who knows we must work together to achieve solutions to our common problems. "It's Up To Us"

P
O
S
I
T
I
O
N
2



Dave LEMMON

Democrat

Campaign Address:
Committee to Re-elect
Dave Lemmon
P.O. Box 1253
Yakima, WA 98902
Telephone: (509) 697-4123

Dave Lemmon has earned a reputation as a hard working, common sense legislator who's making a difference for us.

Dave wrote and passed into law our state's first work ethic boot camp. He's working to ensure completion of a boot camp for juvenile offenders as well.

Dave supports vocational education and job training. He was successful in establishing an advanced nursing program at Yakima Valley Community College.

Dave supports government accountability through performance based auditing of state agencies. He fought to protect taxpayers by voting against the 1993 state budget of more spending and higher taxes. He's earned our support!



James A. (Jim) CLEMENTS

Republican

Campaign Address:
Committee to Elect
Jim Clements
105 East E Street, Unit #8
Yakima, WA 98901
Telephone: (509) 577-9184

With his family roots going back to 1865 in the Yakima Valley, Jim feels a deep commitment to our community.

Jim is a family man, orchardist and business owner known for his accessibility and honest, forthright approach to problem solving.

Jim will work for "peace of mind" laws, fair and affordable health care, greater educational opportunities, sufficient water and accountability in government.

Jim has proven leadership as a Washington Apple Commissioner, Ag Showcase Advisor, Yakima River Watershed Councilman, radio commentator, agricultural writer and former engineer, teacher and principal.

Let's put Jim's experience and leadership to work for us.

State Senator

Fifteenth Legislative District



Kevin L. JACKSON

Democrat

Campaign Address:
Jackson '94
P.O. Box 711
Toppenish, WA 98948
Telephone: (509) 865-5575

"Newhouse has served the valley well over the years. But if any candidate should unseat him, Jackson is one that would not disappoint voters once he got to Olympia." - Toppenish Review newspaper editorial, 3/23/94

Intellect, Political Savvy, Energy, Effectiveness, Integrity and Common Sense: Jackson is a conservative Democrat who, in the tradition of Margaret Rayburn, will defend our district's agricultural and small business interests as well as work for the best schools, more jobs, and to reorganize government to reduce the power of runaway bureaucracy. Jackson understands our need for action on Gang Crime, Water Permit, and Senior Citizen issues. Jackson challenges citizens of all ages, backgrounds, races, and beliefs to work together.

Jackson is 37 years old. He was the son of a Yakima Valley farm laborer, Toppenish High School Student Body President, University of Washington honors graduate, small business expert, and is Executive Director of a nationally recognized nonprofit affordable home development corporation. Kevin has a teenage daughter, Kandice, attending Mabton High and is the husband of Ildia, the Mabton city administrator. Jacksons have lived in Eastern Washington for generations.

Ordinary citizens can produce extraordinary government. Honor the past. Live in the Now. Vote for the Future.



Irv NEWHOUSE

Republican

Campaign Address:
Committee to Re-elect
Irv Newhouse
P.O. Box 29
Sunnyside, WA 98944

Irv Newhouse is a native of the lower Yakima Valley. He and his wife, Ruth, graduated from Sunnyside High and WSU. They and their two sons raise hops, apples, cherries and grapes on their family farm.

Irv has served as president of the Board of Valley Memorial Hospital, Sunnyside Valley Irrigation District, Yakima County Cattlemen's Association and the Yakima County Farm Bureau.

Protecting our families and unique way of life is still important to Irv Newhouse, and that's good news for working families in our area, because Irv is one of the state Senate's most effective and respected legislators.

A fierce opponent of government growth, Irv has voted against millions in new taxes. He's also sponsored and passed open space legislation and the one percent property tax limitation. And Irv Newhouse played a lead role in securing vital funds to fight drugs and gang violence in Eastern Washington.

Irv is now Ranking Member of the Senate Agriculture Committee, where he is a powerful and consistent advocate for farmers and water rights. He also serves on the Commerce & Labor and Rules Committees, and he chairs the Organized Crime Advisory Committee.

Irv Newhouse: Effective, trusted and respected. He deserves your vote.



State Representative

Fifteenth Legislative District

P
O
S
I
T
I
O
N
1



Elmer J. WARD

Democrat

Campaign Address:
Committee to Elect Ward
520 Ward Road
Toppenish, WA 98948
Telephone: (509) 865-3086

Elmer Ward, a resident of Toppenish, graduated from Harvard University with an A.B. in Government and received his Juris Doctorate from UCLA.

For five years he worked for the Yakama Nation Legal Counsel as a Legal Analyst, participating in matters such as land use issues, water rights, and natural resource management and intergovernmental relations.

Since 1992, he has worked as an Education Counselor in the Yakama Nation Office of Higher Education, assisting individuals who want to attend college.

He stands behind efforts to open new markets for Yakima Valley agricultural products in Japan, China and Mexico.



Jim HONEYFORD

Republican

Campaign Address:
Committee to Elect
Jim Honeyford
P.O. Box 844
Sunnyside, WA 98944
Telephone: (509) 839-3527

Jim Honeyford will work hard to represent the people. His personal and community focus has always been to plan ahead for positive growth and to eliminate waste, negative regulations, and unnecessary growth of government.

He plans to promote legislation which will make safe streets and neighborhoods and encourage growth of jobs in the many business and agricultural arenas of his district.

Jim and his wife Jerri are long-time residents of Sunnyside where they raised their four children and involved themselves in school, church, and community activities. Jim served six years on the Sunnyside City Council. He operates two small farms.

Democrat - No candidate filed.

P
O
S
I
T
I
O
N
2



Barb LISK

Republican

Campaign Address:
Friends of Barb Lisk
P.O. Box 68
Grandview, WA 98930
Telephone: (509) 882-1511

First elected in 1990, Barb Lisk is the ranking member on the House Commerce and Labor Committee, and also serves on the Agriculture & Rural Development, Health Care, and Human Services committees.

As a farmer and apple grower, Barb's knowledge of agriculture and business has served her constituents well.

Barb supports fiscally conservative issues. She believes in strict accountability of how taxpayer's money is spent, and that government spending and growth should be controlled. Barb opposes unnecessary taxation, and is a proponent of free enterprise.

OFFICIAL
LOCAL VOTERS' PAMPHLET
1994



GENERAL ELECTION
NOVEMBER 8, 1994

PREPARED BY THE YAKIMA COUNTY ELECTION DEPARTMENT



TABLE OF CONTENTS



Sample Ballot	31
Description of Offices\	
Candidate Statements	37
Ballot Propositions	48
Commissioner District Map	60
Legislative District Map	61
Precinct and Polling Place Information	62
Voting Device Instructions	66

***NOTE: You will be voting only on the issues and
candidates within your jurisdiction.***

**CANDIDATE STATEMENTS ARE PRINTED AS
SUBMITTED. THE COUNTY AUDITOR HAS NO
EDITORIAL AUTHORITY.**

*Many thanks to Gene Soules for the Yakima County Voters'
Pamphlet cover design and artwork.*



SAMPLE
GENERAL ELECTION BALLOT
YAKIMA COUNTY, WASHINGTON
November 8, 1994



SAMPLE BALLOT

Study this ballot carefully before voting. You may mark your sample ballot and take it into the voting booth with you on election day.

NOTE TO VOTERS:

This sample ballot contains all candidates and measures certified to appear at our General Election, November 8. You will not be entitled to vote on all races that appear on this ballot. When you go to the polls, only the contests and ballot measures that apply to your precinct will be listed.

The polls are open from 7:00 a.m. to 8:00 p.m.

DOUG COCHRAN,
Yakima County Auditor

(See STATE VOTERS' PAMPHLET for information on state issues)



SAMPLE BALLOT GENERAL ELECTION NOVEMBER 8, 1994



STATE ISSUES

INITIATIVE MEASURE No. 607	
SHALL PERSONS OTHER THAN DENTISTS BE LICENSED TO MAKE AND SELL DENTURES TO THE PUBLIC, AS REGULATED BY A NEW STATE BOARD OF DENTURE TECHNOLOGY?	
YES	+
NO	+

REFERENDUM BILL 43	
SHALL TAXES ON SALES OF CIGARETTES, LIQUOR, AND POP SYRUP BE EXTENDED TO FUND VIOLENCE REDUCTION AND DRUG ENFORCEMENT PROGRAMS?	
YES	+
NO	+

FEDERAL OFFICES

UNITED STATES SENATOR		Vote for one
RON SIMS	Democrat	+
SLADE GORTON	Republican	+
		+

U. S. REPRESENTATIVE IN CONGRESS 4TH DISTRICT		Vote for one
JAY INSLEE	Democrat	+
DOC HASTINGS	Republican	+
		+

STATE SENATOR 13TH DISTRICT		Vote for one
MIKE WILLIAMS	Democrat	+
HAROLD HOCHSTATTER	Republican	+
		+

STATE REPRESENTATIVE 13TH DISTRICT, POS No. 1		Vote for one
PAMELA KURSAVE	Democrat	+
GARY CHANDLER	Republican	+
		+

STATE REPRESENTATIVE 13TH DISTRICT, POS. No. 2		Vote for one
MICK HANSEN	Democrat	+
JOYCE MULLIKEN	Republican	+
		+

STATE REPRESENTATIVE 14TH DISTRICT, POS. No. 1		Vote for one
JOE WALKENHAUER	Democrat	+
MARY SKINNER	Republican	+
		+

STATE REPRESENTATIVE 14TH DISTRICT, POS. No. 2		Vote for one
DAVE LEMMON	Democrat	+
JAMES A. "JIM" CLEMENTS	Republican	+
		+

STATE SENATOR 15TH DISTRICT		Vote for one
KEVIN L. JACKSON	Democrat	+
IRV NEWHOUSE	Republican	+
		+



**SAMPLE BALLOT
GENERAL ELECTION
NOVEMBER 8, 1994**



STATE OFFICES

STATE REPRESENTATIVE 15TH DISTRICT, POS. No. 1		Vote for one
ELMER J. WARD	Democrat	+
JIM HONEYFORD	Republican	+
		+

STATE REPRESENTATIVE 15TH DISTRICT, POS. No. 2		Vote for one
BARB LISK	Republican	+
		+

COUNTY OFFICES

COUNTY ASSESSOR		Vote for one
RAY HALL	Republican	+
		+

COUNTY AUDITOR		Vote for one
DOUG COCHRAN	Democrat	+
JIM DUCHARME	Republican	+
		+

COUNTY CLERK		Vote for one
KIM M. EATON	Republican	+
		+

COUNTY CORONER		Vote for one
LEONARD D. BIRKINBINE	Republican	+
		+

COUNTY OFFICES

COUNTY PROSECUTING ATTORNEY		Vote for one
JEFFREY C. SULLIVAN	Republican	+
		+

COUNTY SHERIFF		Vote for one
DOUG BLAIR	Republican	+
		+

COUNTY TREASURER		Vote for one
NANCY E. DAVIDSON	Republican	+
		+

COUNTY COMMISSIONER DISTRICT No. 3		Vote for one
CHARLES "CHUCK" KLARICH	Democrat	+
BILL FLOWER	Republican	+
		+

PRECINCT COMMITTEE OFFICER		Vote for one
DEMOCRAT		+
REPUBLICAN		+
		+

NON-PARTISAN OFFICES

STATE SUPREME COURT POS. NO. 1		Vote for one
RICHARD GUY	Non-Partisan	+
		+



SAMPLE BALLOT GENERAL ELECTION NOVEMBER 8, 1994



NON-PARTISAN OFFICES

SPECIAL ELECTIONS

STATE SUPREME COURT POS. No. 2

Vote for one

GERRY L. ALEXANDER	Non-Partisan	+
JANICE NIEMI	Non-Partisan	+
		+

STATE SUPREME COURT POS. No. 3

Vote for one

PHIL TALMADGE	Non-Partisan	+
JEANETTE BURRAGE	Non-Partisan	+
		+

YAKIMA COUNTY DISTRICT COURT JUDGE POS. No. 1

Vote for one

DIRK MARLER	Non-Partisan	+
		+

YAKIMA COUNTY DISTRICT COURT JUDGE POS. No. 2

Vote for one

ROD FITCH	Non-Partisan	+
		+

YAKIMA COUNTY DISTRICT COURT JUDGE POS. NO. 3

Vote for one

RANDALL L. MARQUIS	Non-Partisan	+
		+

YAKIMA COUNTY DISTRICT COURT JUDGE POS No. 4

Vote for one

GEORGE WYNN COLBY	Non-Partisan	+
		+

CITY OF SUNNYSIDE PROPOSITION No. 1 LAW AND JUSTICE CENTER BONDS - \$4,300,000

FOR THE PURPOSE OF CONSTRUCTING, DEVELOPING AND EQUIPPING A LAW AND JUSTICE CENTER FACILITY, WHICH SHALL INCLUDE JAIL FACILITIES, POLICE DEPARTMENT, MUNICIPAL COURT FACILITIES AND CITY COUNCIL CHAMBERS, SHALL THE CITY OF SUNNYSIDE ISSUE UP TO \$4,300,000 OF GENERAL OBLIGATION BONDS PAYABLE, BOTH PRINCIPAL AND INTEREST, OUT OF ANNUAL PROPERTY TAX LEVIES IN EXCESS OF CONSTITUTIONAL OR STATUTORY TAX LIMITATIONS, MATURING WITHIN A MAXIMUM TERM OF TWENTY (20) YEARS, ALL AS PROVIDED IN ORDINANCE No. 1865 OF THE CITY?

BONDS - YES	+
BONDS - NO	+

CITY OF WAPATO PROPOSITION No. 1 UTILITY TAX INCREASE FOR FIRE DEPARTMENT

SHALL THE CITY OF WAPATO INCREASE THE RATE OF TAX ON THE PRIVILEGE OF CONDUCTING AN ELECTRICAL ENERGY, NATURAL GAS, OR TELEPHONE BUSINESS BY THREE PERCENT FOR A TERM OF THREE YEARS, WITH THE INCREASE TO BE ALLOCATED TO THE FIRE DEPARTMENT?

UTILITY TAX INCREASE - YES	+
UTILITY TAX INCREASE - NO	+

CITY OF WAPATO PROPOSITION No. 2 UTILITY TAX INCREASE FOR POLICE DEPARTMENT

SHALL THE CITY OF WAPATO INCREASE THE RATE OF TAX ON THE PRIVILEGE OF CONDUCTING AN ELECTRICAL ENERGY, NATURAL GAS, OR TELEPHONE BUSINESS BY ONE PERCENT FOR A TERM OF THREE YEARS, WITH THE INCREASE TO BE ALLOCATED TO THE POLICE DEPARTMENT?

UTILITY TAX INCREASE - YES	+
UTILITY TAX INCREASE - NO	+



SAMPLE BALLOT GENERAL ELECTION NOVEMBER 8, 1994



SPECIAL ELECTIONS

CITY OF YAKIMA PROPOSITION No. 1 PARK AND RECREATION BONDS, \$5,000,000

FOR IMPROVEMENTS TO CITY PARKS AND FACILITIES AND CONSTRUCTING ADDITIONAL PARK FACILITIES AND ENHANCEMENTS ON EXISTING CITY PARK PROPERTIES, INCLUDING CHESTERLEY, KISSEL, GAILLEON, AND SWAN PARKS, SHALL THE CITY OF YAKIMA ISSUE \$5,000,000 IN GENERAL OBLIGATION BONDS, MATURING WITHIN A MAXIMUM TERM OF TWENTY YEARS FROM THE DATE OF ISSUE, AND SHALL ANNUAL TAX LEVIES IN EXCESS OF REGULAR PROPERTY TAX LEVIES BE AUTHORIZED TO REPAY SUCH BONDS, AS PROVIDED IN CITY ORDINANCE #94-337

BONDS - YES ☐

BONDS - NO ☐

CITY OF YAKIMA PROPOSITION No. 2 STREET IMPROVEMENT BONDS, \$9,800,000

FOR IMPROVEMENTS TO CITY STREETS AND INTERSECTIONS, INCLUDING SIGNALS, TURN LANES, WIDENING, LIGHTS, HANDICAP ACCESS RAMPS, AND CURB RADIUS CHANGES, SHALL THE CITY OF YAKIMA ISSUE \$9,800,000 IN GENERAL OBLIGATION BONDS, MATURING WITHIN A MAXIMUM TERM OF TWENTY YEARS FROM THE DATE OF ISSUE, AND SHALL ANNUAL TAX LEVIES IN EXCESS OF REGULAR PROPERTY TAX LEVIES BE AUTHORIZED TO REPAY SUCH BONDS, AS PROVIDED IN CITY ORDINANCE #94-347

BONDS - YES ☐

BONDS - NO ☐

CITY OF YAKIMA PROPOSITION No. 3 FIRE PROTECTION FACILITIES BONDS, \$3,700,000

FOR IMPROVEMENTS TO THE FACILITIES OF THE YAKIMA FIRE DEPARTMENT INCLUDING NEW TRAINING CENTER, AERIAL TRUCK, AND OTHER FACILITIES, SHALL THE CITY OF YAKIMA ISSUE \$3,700,000 IN GENERAL OBLIGATION BONDS, MATURING WITHIN A MAXIMUM TERM OF TWENTY YEARS FROM THE DATE OF ISSUE, AND SHALL ANNUAL TAX LEVIES IN EXCESS OF REGULAR PROPERTY TAX LEVIES BE AUTHORIZED TO REPAY SUCH BONDS, AS PROVIDED IN CITY ORDINANCE #94-357

BONDS - YES ☐

BONDS - NO ☐

SPECIAL ELECTIONS

CITY OF YAKIMA PROPOSITION No. 4 PACIFIC POWER AND LIGHT COMPANY FRANCHISE

SHALL PACIFICORP., AN OREGON CORPORATION, DOING BUSINESS AS PACIFIC POWER AND LIGHT COMPANY BE GRANTED A NON-EXCLUSIVE FRANCHISE TO LOCATE, CONSTRUCT, MAINTAIN, AND OPERATE ELECTRIC TRANSMISSION AND DISTRIBUTION LINES WITHIN THE CITY OF YAKIMA?

FRANCHISE - YES ☐

FRANCHISE - NO ☐

TOPPENISH SCHOOL DISTRICT #202 PROPOSITION GENERAL OPERATING EXPENSES LEVY

SHALL PROPERTY TAXES IN EXCESS OF STATUTORY AND CONSTITUTIONAL LIMITATIONS BE LEVIED AND COLLECTED OVER A TWO YEAR PERIOD OF TIME IN ORDER TO PROVIDE FOR THE GENERAL OPERATING EXPENSES OF TOPPENISH SCHOOL DISTRICT No. 202, SAID LEVIES TO BE \$350,000 IN EXCESS TAXES (APPROXIMATELY \$1.54 PER THOUSAND DOLLARS OF ASSESSED VALUATION) FOR COLLECTION IN 1995, AND \$350,000 IN EXCESS TAXES (APPROXIMATELY \$1.54 PER THOUSAND DOLLARS OF ASSESSED VALUATION) FOR COLLECTION IN 1996?

TAX LEVY - YES ☐

TAX LEVY - NO ☐

WAPATO SCHOOL DISTRICT #207 GENERAL OBLIGATION BONDS - \$6,800,000

FOR PURCHASING AND IMPROVING CENTRAL VALLEY JUNIOR ACADEMY, INCLUDING ADDITIONS OF CLASSROOMS, IMPROVING WAPATO INTERMEDIATE SCHOOL, INCLUDING KITCHEN, CAFETERIA AND RESTROOM FACILITIES, IMPROVING WAPATO SENIOR HIGH SCHOOL SHOP FACILITIES AND OTHER IMPROVEMENTS, SHALL WAPATO SCHOOL DISTRICT #207 ISSUE \$6,800,000 OF GENERAL OBLIGATION BONDS MATURING WITHIN A MAXIMUM TERM OF 20 YEARS, AND SHALL ANNUAL PROPERTY TAX LEVIES IN EXCESS OF REGULAR TAX LEVIES BE AUTHORIZED TO REPAY SUCH BONDS, ALL AS PROVIDED IN RESOLUTION #37

BONDS - YES ☐

BONDS - NO ☐



**SAMPLE BALLOT
GENERAL ELECTION
NOVEMBER 8, 1994**



SPECIAL ELECTIONS

**YAKIMA COUNTY FIRE PROTECTION DIST. No. 6
GENERAL OBLIGATION BONDS FOR
FIRE DISTRICT IMPROVEMENTS**

TO ACQUIRE, CONSTRUCT, EQUIP AND INSTALL A NEW FIRE STATION AND SUPPORT FACILITIES, AND MAKE OTHER NECESSARY CAPITAL IMPROVEMENTS, SHALL YAKIMA COUNTY FIRE PROTECTION DISTRICT No. 6 ISSUE \$850,000 OF ITS GENERAL OBLIGATION BONDS, MATURING WITHIN A MAXIMUM TERM OF 15 YEARS, AND SHALL ANNUAL PROPERTY TAX LEVIES IN EXCESS OF REGULAR PROPERTY TAX LEVIES BE AUTHORIZED TO REPAY SUCH BONDS, AS DESCRIBED IN RESOLUTION No. 9-94-017

BONDS - YES	<input type="checkbox"/>
BONDS - NO	<input type="checkbox"/>

**NACHES PARK & RECREATION DISTRICT
PROPOSITION
SPECIAL LEVY**

SHALL \$55,000 IN EXCESS PROPERTY TAXES (APPROXIMATELY \$.82 PER THOUSAND DOLLARS OF ASSESSED VALUATION) BE COLLECTED IN 1995 TO MEET THE GENERAL OPERATING EXPENSES AND EQUIPMENT NEEDS OF THE NACHES PARK & RECREATION DISTRICT FOR 1995 AND 1996?

TAX LEVY - YES	<input type="checkbox"/>
TAX LEVY - NO	<input type="checkbox"/>

HAVE A VOICE IN LOCAL LEADERSHP . . .

Have a voice in local leadership - VOTE. The decisions of the people you elect at this General Election will have a direct impact on you, your family and your neighbors.



COUNTY ASSESSOR DESCRIPTION OF OFFICE



As the official "Appraiser" for the county, the Assessor is responsible for appraising the "true and fair market value" of all real and personal property in Yakima County except statewide utilities and railroads for purposes of taxation. A physical inspection is done of one sixth of the real property annually. The appraisals are used to establish the assessed values of each property and the total assessed values for the various taxing districts that levy taxes, such as the county, port districts, cities, schools, road and fire districts. Once the County Commissioners have certified the budgets submitted by the various taxing districts, the Assessor checks that the budgets do not exceed the statutory limitations and then calculates the levy rates and certifies the taxes to the County Treasurer for collection.

The Assessor also maintains records of ownership and legal description for approximately 90,000 real property parcels and 6,200 personal property accounts.

The Assessor is responsible for granting and maintaining the senior/disabled exemption program, the open space agriculture program, the home improvement exemption program and the destroyed property program.

CANDIDATE STATEMENTS

REPUBLICAN



RAY HALL

I have enjoyed the privilege of being your County Assessor for the past four years. It has been a big responsibility to be sure that assessed values were fair across the board for all taxpayers. Accomplishing that with 16 percent less staff wasn't easy but we did our job.

The Assessor doesn't raise taxes, we simply take the tax budgets certified to us by the varying taxing authorities and apply them within their lawful limits to the properties that lie within the various taxing districts.

Our only goal is to appraise the fair market value as close to 100 percent on all real and personal property and to administer the senior citizen and disabled and open space agriculture exemptions program.

The Assessor's Association does recognize the need for reform in the property tax system and does support changes that positively impact the property owners of this state.



COUNTY AUDITOR DESCRIPTION OF OFFICE



The Yakima County Auditor is responsible for four major functions in County programs. The accounting department serves as the chief financial officer by producing the annual financial report, maintaining payroll, accounts payable, accounts receivable, grant accounting and the centralized accounting system. The Auditor serves as a member of the County Finance Committee.

The records department is responsible for all filing and recording of official public records as well as issuing marriage and dog licenses.

The auto licensing department is an agent of the Washington State Department of Licensing having responsibility for the collection of fees and excise tax on motor vehicles and vessels.

The Auditor is the ex-officio Supervisor of all primary, general and special elections. With that responsibility comes the administration of the polling places, preparing ballots, maintaining voting equipment, publishing notices of elections, and conducting the candidates filing period. In addition, the department maintains the county's 80,000 voter registration records and conducts an ongoing voter outreach program for the citizens of Yakima County. The Auditor serves as a member of the County Canvassing Board, chief voter registrar and appoints registration assistants.

CANDIDATE STATEMENTS

DEMOCRAT



DOUG COCHRAN

I love my work and I would like to have your support in my bid for re-election. My commitment to you is to continue to see that you receive the efficient, accountable, cost effective service that you expect.

For 16 years I have been involved in making changes within local government that have improved service to the public, provided better management information and saved money. From punch card balloting to computerized accounting systems to one stop licensing services, I have been involved in finding better ways to get the job done. I have reorganized departments in order to sustain budget cuts without sacrificing service and assembled a staff capable of meeting the increasing challenges facing local government.

I have a tremendous loyalty and commitment to this office and want to continue to use the experience I have gained to serve you. I would appreciate your vote to retain this position.

REPUBLICAN



JIM DUCHARME

I am committed to the citizens of Yakima County and to providing effective leadership in the position of County Auditor. My education and hands-on experience have been in management, administration and quality control. As a retired Army officer with more than 21 years active service, I am accustomed to the responsibilities of managing programs and leading people. More importantly, I accept responsibility and accountability for my actions as well as for those I lead.

I pledge to work aggressively to ensure that county agencies spend your tax dollars wisely. Under my leadership, the expert staff currently employed in the Auditor's office will truly be able to excel. I believe that local government should work for the people and that the people deserve public servants who are responsive to their needs.



COUNTY CLERK DESCRIPTION OF OFFICE



The County Clerk is the financial and administrative officer of the Superior Court. The Clerk's office is responsible for the filing, indexing, maintenance and permanent storage of all legal documents at the Superior Court level; the Clerk's staff provides jury management service for both District and Superior Court; attends and records all Superior Court proceedings; and receipts for, invests and disburses all money paid through the registry of the Court. The Clerk's staff microfilms daily and archival records; perfects appeals; lends courtroom support; prepares court calendars; dismisses court cases; stores and releases court exhibits and assists the public, judges and attorneys.

CANDIDATE STATEMENTS

REPUBLICAN



KIM M. EATON

Since coming into office in 1992, we have been successful in bringing the Clerk's office into the world of personal computers. In addition to enhancing computers in our office, we have converted some procedures from manual to electronic. In October of this year, the Clerk's office will go on line with an accounting system integrated with our docketing system. The system will allow for overnight transmission of accounting information to the State Department of Corrections and will also make available reports to the Clerk's staff for better monitoring of accounts. We will also be implementing a collection division within our office. With data cleanup 95% completed, the new juror source list project on line, we are beginning to explore alternatives to microfilm storage as well as other ways that the Clerk's office can provide even better and more efficient service to the public.

VOTER TURNOUT PROJECTION . . .

The projected turnout for our county for this General Election is only 64% - let's prove this projection wrong!! Read this voter pamphlet information, become informed and VOTE ON NOVEMBER 8, 1994.



COUNTY CORONER DESCRIPTION OF OFFICE



It is the duty of the Coroner to assume jurisdiction over all bodies of deceased persons who come to their deaths suddenly and without medical attendance. This applies to circumstances which indicate death was caused by unlawful or unnatural means or where a death occurs under suspicious circumstances. It also applies to cases where a Coroner's autopsy or Coroner's Inquest is to be held; or where death is by violence. The jurisdiction of the Coroner also extends to the body of a deceased who, although not physically seen by a physician within 36 hours preceding death, was generally under a physician's care for a number of years prior to his death.

It is the duty of the Coroner to equip and maintain the County Morgue.

It is the duty of the Coroner to ascertain the cause of death by whatever means necessary. This often includes autopsies, X-rays, and extensive investigations.

CANDIDATE STATEMENTS

REPUBLICAN



LEONARD D.
BIRKINBINE

I have served Yakima County as the Coroner for over 16 years and in that time, I have developed a cooperative relationship with members of the medical community as well as the law enforcement agencies. Initially, I began investigating deaths over 30 years ago as a law enforcement officer in Wapato and then with the Yakima County Sheriff's Office. I look forward to serving Yakima County for another four year term.



PROSECUTING ATTORNEY DESCRIPTION OF OFFICE



The Prosecuting Attorney has the duty to prosecute all criminal matters for Yakima County and for the State of Washington in District Court, Juvenile Court, Superior Court and Court of Appeals in Washington, and the Supreme Court of Washington. The Prosecutor also has the responsibility to serve as legal advisor to county departments and officials and represents the County in lawsuits brought by or against the County in all federal and state courts, and administrative agencies. The Prosecutor's duties also extend to enforcing court orders and collects child support payments from absent parents, criminal non-support and paternity matters.

CANDIDATE STATEMENTS

REPUBLICAN



JEFFREY C.
SULLIVAN

Jeff Sullivan has served Yakima County for 20 plus years and looks forward to serving its great citizens for four more years. I will strive to hold criminals accountable for their crimes, and work with the Washington legislature to pass laws that make sense.

DID YOU KNOW

Starting in January, 1994 residents of our state are able to register to vote by mail. Washington State residents will no longer be required to go before a voter registrar to register to vote. Registration forms are distributed throughout Yakima County at schools, city halls, fire stations, state offices, etc.



COUNTY SHERIFF DESCRIPTION OF OFFICE



As the chief law enforcement officer for the court, the Sheriff is bound by the constitution and by statute to maintain law and order and to protect life and property. The Sheriff is also responsible for and shall:

1. Arrest all persons who break the peace, or attempt to break the peace and all persons guilty of public offenses.
2. Defend the county against those who, by riot or otherwise, endanger the public peace or safety.
3. Execute the process and orders of the courts of justice or judicial officers.
4. Execute all warrants delivered for that purpose by other public officers.
5. Attend sessions of courts of record held within the county, and obey their lawful orders or directions.

Shall keep and preserve the peace in their respective counties.

CANDIDATE STATEMENTS

REPUBLICAN



DOUG BLAIR

I was born and raised in Yakima. I have 22 years of law enforcement experience, twenty of those years have been with the Yakima Sheriff's Office, the last nine as your Sheriff.

I am a graduate of Yakima Valley College and the National FBI Academy. I have served on several state boards and commissions dealing with law enforcement issues. I currently serve as a member of the Board of Dir. for the Western States Sheriffs.

My goals for the Sheriff's Office for the next four years include: presentation of the DARE program in county schools, implementation of E 911 and consolidated dispatch, traffic patrol of county roads, and more deputies to answer citizens complaints.

It is important to me that the Sheriff and deputies are readily available to address your concerns in a prompt and courteous manner. Making our community safe requires an equal partnership between law enforcement and citizens.



COUNTY TREASURER DESCRIPTION OF OFFICE



The Treasurer serves as the finance officer of the County, and the office is the receipting center for all Yakima County departments, junior taxing districts and special assessment districts. The Treasurer bills, collects and distributes property taxes and assessments for all districts, cities and the state. Other duties of the Treasurer include the processing of excise tax affidavits; mobile home moving permits; management of cash flow for the County's general fund; processing investments for the County and all districts; providing analysis for major revenues; and management of debt service for the County and all districts.

CANDIDATE STATEMENTS

REPUBLICAN



NANCY E.
DAVIDSON

My first term as County Treasurer has proved to be a challenge, as well as an opportunity for change. The growth in the county and changing economy have increased the volume of monies processed through the office; there are new districts that impact our billing and collection; and we are coping with all of this with fewer staff people due to recent budgetary cutbacks. Up to \$600 million a year is moved through this "bank" for the county including property taxes, and we manage investments of \$150 million. That's your money we're investing in order to make more money for this county's jurisdictions!

We are continuing to improve understanding and communication between the County Treasurer's Office and the citizens it serves. I appreciate the support and feedback we receive from many of you! And I look forward to serving you for another term.

HAVING TROUBLE GETTING TO THE POLLS FOR EACH ELECTION?

A law that went into effect this year allows any voter to apply for permanent "ONGOING" absentee status. Voters only need to apply once to receive an absentee ballot for each ensuing election. To apply for "ONGOING" absentee status, use the absentee ballot form that is included in this voters pamphlet and check PERMANENT REQUEST; or, for further information contact the Yakima County Election Department, 575-4044.



BOARD OF COUNTY COMMISSIONERS DESCRIPTION OF OFFICE



Of the 3,101 counties in the United States, more than 2,500 counties, governing nearly half the nation's citizens, operate under the traditional commission form, as does Yakima County. The State of Washington established counties as legal sub-divisions. A three member Board of Commissioners is elected on staggered terms from equally populated districts.

The commissioners, as the chief policy makers and general managers of the county's governmental affairs, share administrative responsibilities with officials elected to perform specific county functions. It is the responsibility of the commissioners to: 1) adopt a county budget and authorize expenditures; 2) take all legal action in the name of the county; 3) enact ordinances and resolutions to protect public health, welfare and safety of citizens of the county; 4) appoint advisory boards and commissions; 5) hire staff to carry out functions under the commissioners' jurisdiction; and 6) serve on numerous boards and commissions as mandated by the state:

The Chairperson of the county commissioners serves on:

1. Election Canvassing Board
2. Finance Committee
3. Law Library Board

All 3 commissioners serve on:

1. District Health Board
2. Emergency Services Council
3. Yakima County Conference of Governments

2 commissioners serve on:

1. Joint Board for Urban Area Planning and Development
2. Clean Air Authority Board

The Board of County Commissioners appoint:

1. Members of boards and commissions
2. Vacancies occurring in county and state legislative offices
3. Personnel and Management Negotiating Committee
4. Private Industry Council
5. Assessor's Advisory Group



COUNTY COMMISSIONER 3RD DISTRICT



CANDIDATE STATEMENTS

DEMOCRAT
REPUBLICAN

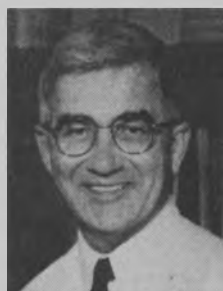


**CHARLES "CHUCK"
KLARICH**

Being a Yakima County Commissioner for sixteen years has enabled me to be a leader in state and local government. My knowledge and experience have benefited Yakima County with such programs as: state funding of criminal justice, new and stricter juvenile laws, modification of procedures for youth work rules, and projects to modify and reduce regulations and permits.

Support for economic development is a priority and as a board member of New Vision, I will work with the private sector to create new jobs. The development of an industrial park, foreign trade zone, and the award winning Agricultural Showcase are examples of developments that have occurred during my terms in office.

I will continue to personally respond to everyone who contacts me with a question or problem and will assist in any way I can. Your previous and continued support for my election as Yakima County Commissioner is greatly appreciated.



BILL FLOWER

I am Bill Flower--a native of Sunnyside, graduate of Sunnyside Public Schools and Central Washington University. I am involved in community organizations that contribute to the quality of living in Yakima County.

For thirty-four years I have successfully owned, operated, and managed farmlands and business enterprises where I have met payrolls and paid taxes generated from those enterprises.

Six and three-fourths years ago I was elected Commissioner--Port of Sunnyside. I am proud to be a member of the team that creates an environment for private enterprise investment--the result of which are jobs and public sector enhancement.

I believe in a pragmatic, common sense approach for solutions to governmental issues. I believe in responsive, responsible, and accountable government and responsive, responsible, and accountable government officials.

I ask for your vote--I will work for you!



DISTRICT COURT JUDGE DESCRIPTION OF OFFICE



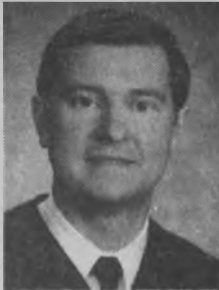
Four full-time judges serve Yakima County District Court and handle the largest volume of cases. The Court operates offices in Yakima, Toppenish and Sunnyside.

District Courts handle criminal and civil matters, including crimes punishable by up to one year in jail and a \$5,000 fine. The criminal matters include such things as shoplifting, domestic violence assaults, driving while under the influence, hit and run, and driving with a suspended license. Civil cases include personal injury, property damage, and contract disputes for amounts up to \$25,000, small claims, anti-harassment actions, name changes, and certain lien foreclosures.

District Court Judges in Yakima County must be lawyers admitted to practice law in the State of Washington.

CANDIDATE STATEMENTS DISTRICT COURT JUDGE POS. 1

NON
PARTISAN



DIRK MARLER

Dirk Marler is a tough but fair judge who is respected for his integrity, hard work, and common sense.

Judge Marler was born in Yakima and raised in Sunnyside. He graduated from Sunnyside High School, Washington State University, and the University of Idaho College of Law. He and his wife, Brenda, live in the East Valley area with daughters Danielle and Stephanie.

Judge Marler is a leader in the community and among his fellow judges. He serves on the boards of directors for Camp Fire and for Yakima Kiwanis. He spends many hours of personal time helping explain the legal system to students and other citizens, and is involved statewide in providing educational programs for judges.

"I will keep working hard to improve the efficiency and effectiveness of the Court. I appreciate your support."

DISTRICT COURT JUDGE POS. 2

NON
PARTISAN



ROD FITCH

Yakima County District Court Judges preside over a substantial variety of civil and criminal cases: small claims, collection agency claims, civil claims up to \$25,000, name changes, anti-harassment petitions, vehicle impoundment hearings, traffic infractions, driving under the influence, hit and run, reckless driving, and driver's license violations. Non-traffic criminal jurisdiction includes, but is not limited to, crimes such as shoplifting, domestic violence, prostitution, property destruction, harassment, some drug charges, trespass, reckless endangerment and game violations. In 1993, over 40,000 proceedings were filed with District Court.

In cases assigned to me, my goal is that all participants be heard fully and treated impartially with respect and dignity. My belief is that the plain meaning of the law should be applied without strained interpretations.

Administratively, I strive to work harmoniously with my fellow judges and court personnel toward continuous improvement in the delivery of court services in an efficient, cost effective manner.



CANDIDATE STATEMENTS DISTRICT COURT JUDGE POS. 3



NON
PARTISAN



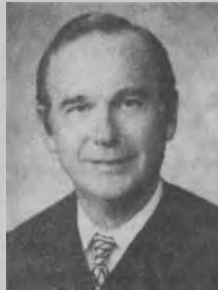
RANDALL L.
MARQUIS

I thank the people of Yakima County for the support and confidence they have shown me over the past years. I wish to serve you for another four years and I ask for your continued support.

It has been a great honor to hold the office of Yakima County District Court Judge. It is my commitment to you that I will continue to do my best to uphold the laws of the State of Washington and support and defend the Constitutions of the State of Washington and the United States of America, and that I will discharge my duties and responsibilities in a fair and even-handed manner at all times.

DISTRICT COURT JUDGE POS. 4

NON
PARTISAN



GEORGE WYNN
COLBY

During the last eight years as one of your District Court Judges I have delivered to Yakima County the highest standard of justice that I could. I have always been aware of the needs of our entire Valley and the many victims of crime, especially in the areas of Domestic Violence and Driving While Intoxicated. Since crime doesn't go away when budgets have to accommodate tax/spending limits, in the next four years I will continue innovations in the delivery of court services so that the public will be served to the best of my ability. As in the past I will continue to work to see that your taxes spent in Yakima County for court services take into account the needs of the Lower Valley and that all citizens of Yakima County receive a fair allocation of resources and services.



BALLOT PROPOSITIONS



1. Ballot Titles
2. Explanatory Statements
3. For and Against Statements

JURISDICTIONS INCLUDED:

City of Sunnyside

General Obligation Bonds

City of Wapato

Utility Tax Increase for Fire Department

Utility Tax Increase for Police Department

City of Yakima

Park and Recreation Bonds

Street Improvement Bonds

Fire Protection Facilities Bonds

Franchise Proposition

#202 Toppenish School District

General Operating Expenses Levy

#207 Wapato School District

General Obligation Bonds

Fire Protection District No. 6

General Obligation Bonds

Naches Park and Recreation District

Special Levy

NOTE: The full text of all ballot propositions is available upon request at the Yakima County Election Department.

Statements supporting and opposing a ballot proposition, as printed in this pamphlet, are the opinions of the authors and have not been checked for factual or grammatical accuracy by an official government agency.



CITY OF SUNNYSIDE PROPOSITION NO. 1

LAW AND JUSTICE CENTER BONDS - \$4,300,000



Official Ballot Title:

For the purpose of constructing, developing and equipping a law and justice center facility, which shall include jail facilities, police department, municipal court facilities and city council chambers, shall the City of Sunnyside issue up to \$4,300,000 of general obligation bonds payable, both principal and interest, out of annual property tax levies in excess of constitutional or statutory tax limitations, maturing within a maximum term of twenty (20) years, all as provided in Ordinance No. 1865 of the city?

Explanatory Statement

If approved, the Sunnyside Law and Justice Center bond issue will authorize the City of Sunnyside to issue up to \$4,300,000.00 of twenty-year general obligation bonds, the revenue of which will be used to construct a new Law and Justice Center, which will include jail facilities, police department, municipal court facilities and the city council chambers.

The bonds will be payable through taxes levied annually on all taxable property within the city, in excess of regular taxes, in an amount sufficient, together with other funds available for such purposes, to pay the principal and interest on the bonds.

NOTE: Explanatory statements were written by the legislative authority of the district as provided by state law.

Statement for

Sunnyside's court and police facilities are fifty years old and have outlived their useful life. They are no longer adequate to effectively serve Sunnyside citizens.

FACT: Current local facilities are deteriorating and present a safety risk to the public, police, and court personnel.

FACT: The current local facilities lack of space and inefficient layout significantly reduce the city's ability to serve the public.

FACT: Closure of the current facility would be costly to citizens in terms of wasted dollars and manpower by taking inmates to Yakima at an estimated cost of \$500,000 annually.

New jail, police, and court facilities are essential. We urge you to approve the issuance of general obligation bonds in the amount of \$4.3 million to construct a Law and Justice Center. Annual debt service would be about \$390,000. For a 60,000 home, this would be approximately \$1.37 per thousand, or about \$82.20 per year tax increase.

Voter's Pamphlet Statement Prepared By:
GREG UBERUAGA, Citizen, HAROLD BROWN, Citizen,
DORENE PEREZ, Citizen

Statement against

NO STATEMENTS AGAINST THE PROPOSITION
WERE SUBMITTED.



CITY OF WAPATO
PROPOSITION No. 1
UTILITY TAX INCREASE FOR FIRE DEPARTMENT



Official Ballot Title:

Shall the City of Wapato increase the rate of tax on the privilege of conducting an electrical energy, natural gas, or telephone business by three percent for a term of three years, with the increase to be allocated to the Fire Department?

Explanatory Statement:

If approved by the voters the City will collect an additional three percent tax on electricity, natural gas and telephone service for a period of three years.

Revenue from this utility tax shall only be used to purchase and equip a fire engine to replace an aging 1964 fire engine. None of the money shall be used for administration or operations.

The three percent utility tax is in addition to the utility tax which utility users currently pay.

NOTE: Explanatory statements were written by the legislative authority of the district as provided by state law.

Statement for

Why a new pumper?

The Wapato Fire Department operates two fire fighting pumpers. One is a 1979 and one is a 1964. Over the last few years fire fighters have worked diligently to insure that both pumpers are able to respond to alarms. Despite their efforts on several occasions the 1964 pumper stopped running while returning from fires. This has not compromised the departments ability to combat fire, but every time the alarm rings it is uncertain as to whether the pumper will perform.

Why a utility tax?

The utility tax was decided upon because it spreads the burden of payment among all utility users in Wapato and places the largest burden on the large industrial utility customers.

Fire cares not about race, religion, creed, color, national origin, sex, age or net worth.

Please give the fire fighters a chance to combat fires that threaten our community and vote yes.

Voters' Pamphlet Statement Prepared By:
MARGARET GROTH, Citizen's Committee, KEN BUTLER,
Citizen's Committee, SANTOS VALDEZ, President, Wapato
Volunteer Fire Fighter's Assoc.

Statement against

NO STATEMENTS AGAINST THE PROPOSITION WERE SUBMITTED.



CITY OF WAPATO PROPOSITION No. 2

UTILITY TAX INCREASE FOR POLICE DEPARTMENT



Official Ballot Title:

Shall the City of Wapato increase the rate of tax on the privilege of conducting an electrical energy, natural gas, or telephone business by one percent for a term of three years, with the increase to be allocated to the Police Department?

Explanatory Statement:

If approved by the voters, the City will collect an additional one percent tax on electricity, natural gas and telephone service for a period of three years.

Revenue from this utility tax shall be used for the provision of police services in the City of Wapato. The funding will be used to maintain and properly equip a crime prevention and DARE officer within the Wapato Police Department.

The one percent utility tax is in addition to the utility tax which utility users currently pay.

NOTE: Explanatory statements were written by the legislative authority of the district as provided by state law.

Statement for

Why the need for a crime prevention/D.A.R.E. officer?

The Wapato Police Department currently has a D.A.R.E. officer, but funding for the position is in danger of being cut. In 1994 the position was funded 65% with donations. Crime is a growing problem throughout the nation and law enforcement agencies have found that crime prevention reduces crime.

Why a utility tax?

The utility tax was decided upon because it spreads the burden of payment among all utility users in Wapato and places the largest burden on the large industrial customers.

Crime effects each and every one of us, therefore, we all need to help reduce crime. Crime prevention is a cheaper alternative to arresting, convicting and incarcerating criminals. Criminal activity was reduced by 47% in areas in the city using Block Watch programs.

Please give the police an opportunity to save us money by preventing crime from happening, vote yes.

Voters' Pamphlet Statment Prepared By:

MARGARET GROTH, Citizen's Committee, KEN BUTLER, Citizen's Committee, SANTOS VALDEZ, President, Wapato Volunteer Fire Fighter's Assoc.

Statement against

NO STATEMENTS AGAINST THE PROPOSITION WERE SUBMITTED.



**CITY OF YAKIMA
PROPOSITION NO. 1
PARK AND RECREATION BONDS, \$5,000,000**



Official Ballot Title:

For improvements to City parks and facilities and constructing additional park facilities and enhancements on existing City park properties, including Chesterley, Kissel, Gailleon, and Swan Parks, shall the City of Yakima issue \$5,000,000 in general obligation bonds, maturing within a maximum term of twenty years from the date of issue, and shall annual tax levies in excess of regular property tax levies be authorized to repay such bonds, as provided in City Ordinance #94-33?

Explanatory Statement:

If approved by the voters, the City of Yakima will issue bonds in the amount of \$5,000,000 to repair, renovate, and further develop the City's parks and recreation system. Specifically, proceeds from the bonds will enable the City to make needed park repairs, renovations, and enhancements; finish development of the Chesterley Park Soccer Complex; and construct three new City parks. The bond measure will cost \$.20 per thousand of assessed property value (\$10 per year on a \$50,000 home).

NOTE: Explanatory statements were written by the legislative authority of the district as provided by state law.

Statement for

Repair our parks. Make them safer. Develop park land that lies idle. That's what Yakima citizens said in a 1993 survey. This bond does all three at minimal cost.

Bond proceeds will fund: needed repairs, replacement, and/or enhancement of playground equipment, swimming and wading pools, tennis courts, parking lots, and rest rooms; improved access for everyone; addition of sports centers, picnic shelters, security lighting, athletic field lighting, irrigation equipment, and fencing; expansion of the Senior Center; full development of the Chesterley Soccer Complex/Park; and construction of three new parks -- Emil Kissel, Gailleon, and Swan -- on idle city property.

The future of our parks depends on you. Vote yes to ensure that Yakima's park system is in good repair, fully developed, accessible, and safer for everyone.

Voters' Pamphlet Statement Prepared By:
DAVE DION, Co-Chair, Citizens for Yakima Future, MYRNA CONTRERAS-TREJO, Co-Chair, Citizens for Yakima Future, WILLIAM HUIBREGTSE, Committee Member

Statement against

NO STATEMENTS AGAINST THE PROPOSITION WERE SUBMITTED.



**CITY OF YAKIMA
PROPOSITION NO. 2
STREET IMPROVEMENT BONDS, \$9,800,000**



Official Ballot Title:

For improvements to City streets and intersections, including signals, turn lanes, widening, lights, handicap access ramps, and curb radius changes, shall the City of Yakima issue \$9,800,000 in general obligation bonds, maturing within a maximum term of twenty years from the date of issue, and shall annual tax levies in excess of regular property tax levies be authorized to repay such bonds, as provided in City Ordinance #94-347

Explanatory Statement:

If approved by the voters, the City of Yakima will issue bonds in the amount of \$9,800,000 to fund repair and improvement of City streets. Specifically, the bond proceeds will enable the City to improve two significant intersections; perform pavement rehabilitation of eleven major street sections; and to widen and/or reconstruct three principal street sections. The bond measure will cost \$0.40 per thousand of assessed property value (\$20 per year on a \$50,000 home).

NOTE: Explanatory statements were written by the legislative authority of the district as provided by state law.

Statement for

Yakima's street system has deteriorated over the years due to age and heavy use imposed by our steady growth. Substantial reconstruction is necessary to ensure the safety of Yakima's street system and relieve congestion.

Passage of the Street Improvement Bond will accomplish these goals by funding the following public safety improvements:

- Improve two key intersections -- including signals, turn lanes, minor widening, street lights, handicap access ramps and curb radius changes.
- Pavement rehabilitation for eleven important street sections -- including surface grinding, replacement of two to three inches of material, curb repairs/replacement, drainage improvements, street light improvements and new surfacing.
- Widen and/or reconstruct three principal street sections -- including removal of the old road, widening and replacing curbs, sidewalks, street lights, base material and pavement.

The improvements will cost \$15.6 million. Yakima will match the \$9.8 million bond with \$5.8 million federal/state support. Vote yes for safer streets.

Voters' Pamphlet Statement Prepared By:
DAVE DION, Co-Chair, Citizens for Yakima Future, MYRNA CONTRERAS-TREJO, Co-Chair, Citizens for Yakima Future, WILLIAM HUIBREGTSE, Committee Member

Statement against

NO STATEMENTS AGAINST THE PROPOSITION WERE SUBMITTED.



CITY OF YAKIMA PROPOSITION NO. 3

FIRE PROTECTION FACILITIES BONDS, \$3,700,000



Official Ballot Title:

For improvements to the facilities of the Yakima Fire Department including new training center, aerial truck, and other facilities, shall the City of Yakima issue \$3,700,000 in general obligation bonds, maturing within a maximum term of twenty years from the date of issue, and shall annual tax levies in excess of regular property tax levies be authorized to repay such bonds, as provided in City Ordinance #94-35?

Explanatory Statement:

If approved by the voters, the City of Yakima will issue bonds in the amount of \$3,700,000 to upgrade Fire Department apparatus and facilities. Specifically, the proceeds will enable the City to construct a new Fire Department training center; construct a new fire station; construct a new Fire Department maintenance and electronic shop; purchase an aerial fire fighting truck; upgrade fire station rest room facilities to accommodate female firefighters; and install exhaust removal systems for Fire Department facilities. The bond measure will cost \$0.15 per thousand of assessed property value (\$7.50 per year on a \$50,000 home).

NOTE: Explanatory statements were written by the legislative authority of the district as provided by state law.

Statement for

The Yakima City Fire Department provides a broad spectrum of life saving and property protection services to all citizens of Yakima. Unfortunately, some critical fire fighting equipment and facilities are outmoded, inefficient, and unsafe. The result is a less-than-fully effective fire fighting force and a lower fire insurance rating.

Specific deficient equipment/facilities include: 40-year old Fire Station #3 -- which can only accommodate one fire truck and has the slowest response time in the City; a 40-year old training tower -- whose use is severely limited because of safety regulations and physical limitations; and a 26-year old aerial fire truck -- parts for it won't even be available in a few years.

Passage of this Yakima Fire Department Bond will alleviate the above deficiencies, improve fire fighting capabilities, and positively impact the City's fire insurance rating. A vote yes is a vote for a safer Yakima.

Voters' Pamphlet Statement Prepared By:
DAVE DION, Co-Chair, Citizens for Yakima Future, MYRNA CONTRERAS-TREJO, Co-Chair, Citizens for Yakima Future, WILLIAM HUIBREGTSE, Committee Member

Statement against

NO STATEMENTS AGAINST THE PROPOSITION WERE SUBMITTED.



**CITY OF YAKIMA FRANCHISE
PROPOSITION NO. 4**

PACIFIC POWER AND LIGHT COMPANY FRANCHISE



Official Ballot Title:

Shall PacifiCorp., an Oregon Corporation, doing business as Pacific Power and Light Company be granted a non-exclusive franchise to locate, construct, maintain, and operate electric transmission and distribution lines within the City of Yakima?

Explanatory Statement:

If this proposition is approved by a majority of the voting electors of the City of Yakima, then a 25 year franchise would be granted to PacifiCorp, an Oregon Corporation doing business as Pacific Power and Light Company to allow it to continue operation of an electric transmission and distribution system within the City of Yakima. The full franchise agreement is contained in Ordinance No. 94-45, passed by the Yakima City Council on August 23, 1994.

NOTE: Explanatory statements were written by the legislative authority of the district as provided by state law.

Statement for

The renewal of this franchise allows Pacific Power and Light to continue to operate and maintain its electric transmission and distribution system as it has in the past. The vote on this franchise is required in order to comply with the City's Charter.

Voters' Pamphlet Statement Prepared By:
TOM LOVELL, Pacific Power & Light, ALLEN SCHMID,
Pacific Power & Light

Statement against

NO STATEMENTS AGAINST THE PROPOSITION
WERE SUBMITTED.



TOPPENISH SCHOOL DISTRICT No. 202
PROPOSITION
GENERAL OPERATING EXPENSES LEVY



Official Ballot Title:

Shall property taxes in excess of statutory and constitutional limitations be levied and collected over a two year period of time in order to provide for the general operating expenses of Toppenish School District No. 202, said levies to be \$350,000 in excess taxes (approximately \$1.54 per thousand dollars of assessed valuation) for collection in 1995, and \$350,000 in excess taxes (approximately \$1.54 per thousand dollars of assessed valuation) for collection in 1996?

Explanatory Statement:

This measure would authorize the Toppenish School Board of Directors to establish a two year special levy upon real property within the Toppenish School District to raise \$350,000 per year for 1995 and 1996. Proceeds from this special levy, together with levy equalization monies from the state will enable the district to enhance computer technology, install security cameras and safety lighting at all schools, purchase new textbooks, complete the athletic field at the High School, and upgrade existing school facilities.

NOTE: Explanatory statements were written by the legislative authority of the district as provided by state law.

Statement for

Passage of the special levy would enable the school district to access levy equalization funds from the state of approximately 2.3 million dollars over the two year period.

Taxes will not go up if this levy is approved because voters approved a similar two year levy in 1992.

Tax rates for Toppenish school patrons are among the lowest in Yakima County.

Proceeds from the levy will be used to develop and enhance athletic facilities, computer technology, replace old and obsolete text books, pave and light all school parking lots and install security cameras on all school campuses.

The availability of levy equalization funds provides us an opportunity to address the long term needs of the district in a cost efficient manner without resorting to large bond indebtedness.

Our students are our future, and they deserve decent, safe, school facilities.

Please join us in supporting the Toppenish School Levy.

Voters' Pamphlet Statment Prepared By:

BILL ROGERS, Chairperson, Toppenish School Levy Committee, JANE DAVIS, Treasurer, Toppenish School Levy Committee, MARG HUFF, Secretary, Toppenish School Levy Committee

Statement against

NO STATEMENTS AGAINST THE PROPOSITION WERE SUBMITTED.



**WAPATO SCHOOL DISTRICT #207
GENERAL OBLIGATION BONDS
\$6,800,000**



Official Ballot Title:

For purchasing and improving Central Valley Junior Academy, including additions of classrooms, improving Wapato Intermediate School, including kitchen, cafeteria and restroom facilities, improving Wapato Senior High School shop facilities and other improvements, shall Wapato School District #207 issue \$6,800,000 of general obligation bonds maturing within a maximum term of 20 years, and shall annual property tax levies in excess of regular tax levies be authorized to repay such bonds, all as provided in Resolution #3?

Explanatory Statement:

Passage of the ballot measure will allow Wapato School District #207 to borrow \$6,800,000 by issuing bonds in order to make acquisitions and to pay for improvements to Wapato Intermediate School and Wapato High School, which the ballot measure and Resolution #3 of the District describe. The principal of and interest on the bonds will be payable out of property taxes levied each year within the District in addition to other property tax levies. The interest rate on the bonds will be fixed when the bonds are sold and will be determined by then current market conditions.

NOTE: Explanatory statements were written by the legislative authority of the district as provided by state law.

Statement for

Wapato School District has been dealing with an ever increasing school population for several years. Two years ago Wapato passed a bond to remodel the Primary building which is 1/2 of the Primary/Intermediate building.

Now the board is asking patrons to pass a \$6.8 million bond. This bond would remodel the intermediate half of the Primary/Intermediate building and alleviate the over-crowding in the lunch room which has forced 6 lunch periods beginning at 10:50 a.m. and ending at 1:00 p.m. The result would give the total Primary/Intermediate building the same longevity.

The bond would also allow the district to purchase and remodel the Central Valley Junior Academy which would put it on a parity with the other buildings plus add 30 acres to the district. The bond would also provide funds to bring the High School shop up to current codes.

Voters' Pamphlet Statement Prepared By:
JUDY VERBRUGGE, Homemaker, BILL COLEMAN,
Pharmacist, JOHN FRANCISCO, Teacher

Statement against

NO STATEMENTS AGAINST THE PROPOSITION
WERE SUBMITTED.



YAKIMA COUNTY FIRE PROTECTION DIST. No. 6
PROPOSITION
GENERAL OBLIGATION BONDS
FOR FIRE DISTRICT IMPROVEMENTS - \$850,000



Official Ballot Title:

To acquire, construct, equip and install a new fire station and support facilities, and make other necessary capital improvements, shall Yakima County Fire Protection District No. 6 issue \$850,000 of its general obligation bonds, maturing within a maximum term of 15 years, and shall annual property tax levies in excess of regular property tax levies be authorized to repay such bonds, as described in Resolution No. 9-94-01?

Explanatory Statement:

Yakima County Fire Protection District No. 6 seeks voter approval of a bond issue in the amount of \$850,000 to pay the cost of acquiring, constructing, installing and equipping a new fire station and support facilities. The new fire station will replace the original Gleed Fire Station that was built in 1953.

The bonds will mature within a maximum term of 15 years and will be repaid from annual tax levies in excess of regular tax levies. The estimated annual levy rate for each property owner will be approximately \$.77 per \$1,000 of assessed valuation.

NOTE: Explanatory statements were written by the legislative authority of the district as provided by state law.

Statement for

Since 1947, Yakima County Fire Protection District No. 6 (the "District") has been staffed by dedicated volunteers who donate their time and efforts to help their neighbors in the Gleed Community. Because the District does not charge its volunteers on a per call basis, it enjoys the lowest tax rate of all fire districts in the Upper Yakima Valley, while still serving the community with state-of-the-art emergency equipment.

Due to the annual increase in fire and emergency medical calls and more stringent training standards, the District is in desperate need of replacing the current Gleed Fire Station that was built in 1953. The proposed bond issue will enable the District to construct a new fire station that would adequately meet the demands of today's fire protection services.

Please join us and continue to support the District.

Voters' Pamphlet Statment Prepared By:

ED MACKENZIE, Chairperson, Gleed Fire Department Bond Committee, MILES KOHL, Gleed Fire Department Bond Committee, JIM KOHL, Gleed Fire Department Bond Committee

Statement against

NO STATEMENTS AGAINST THE PROPOSITION WERE SUBMITTED.



**NACHES PARK & RECREATION DISTRICT
PROPOSITION - SPECIAL LEVY
\$55,000**



Official Ballot Title:

Shall \$55,000.00 in excess property taxes (approximately \$.82 per thousand of assessed valuation) be collected in 1995 to meet the general operating expenses and equipment needs of the Naches Park & Recreation District for 1995 and 1996?

Explanatory Statement:

This ballot issue proposes to levy a one year special tax upon the real property within the Naches Park and Recreation District to raise \$55,000. The tax rate to raise that amount is approximately \$.82 per thousand of assessed valuation. Proceeds from this special levy will be used for the purpose of maintaining and equipping park property for the 1995 and 1996 calendar years.

NOTE: Explanatory statements were written by the legislative authority of the district as provided by state law.

Statement for

Applewood Park needs your vote for a special levy. This levy will be on your general election ballot if you reside in Fire District #3 or the Town of Naches. The levy will be collected during the 1995 calendar year and will be used to finance the maintenance, operation and improvements to Applewood Park for the next two years (1995 and 1996). This amount is the same as it was two years ago. The cost per \$1,000 of assessed value represents an actual decrease from 99 cents to approximately 82 cents. The park does not receive funding from the Town of Naches, Yakima County or any other government agency.

We feel strongly that \$55,000 is a reasonable amount to operate, maintain and improve Applewood Park for the next two years. It is important that our community protect the recreational facilities that we have.

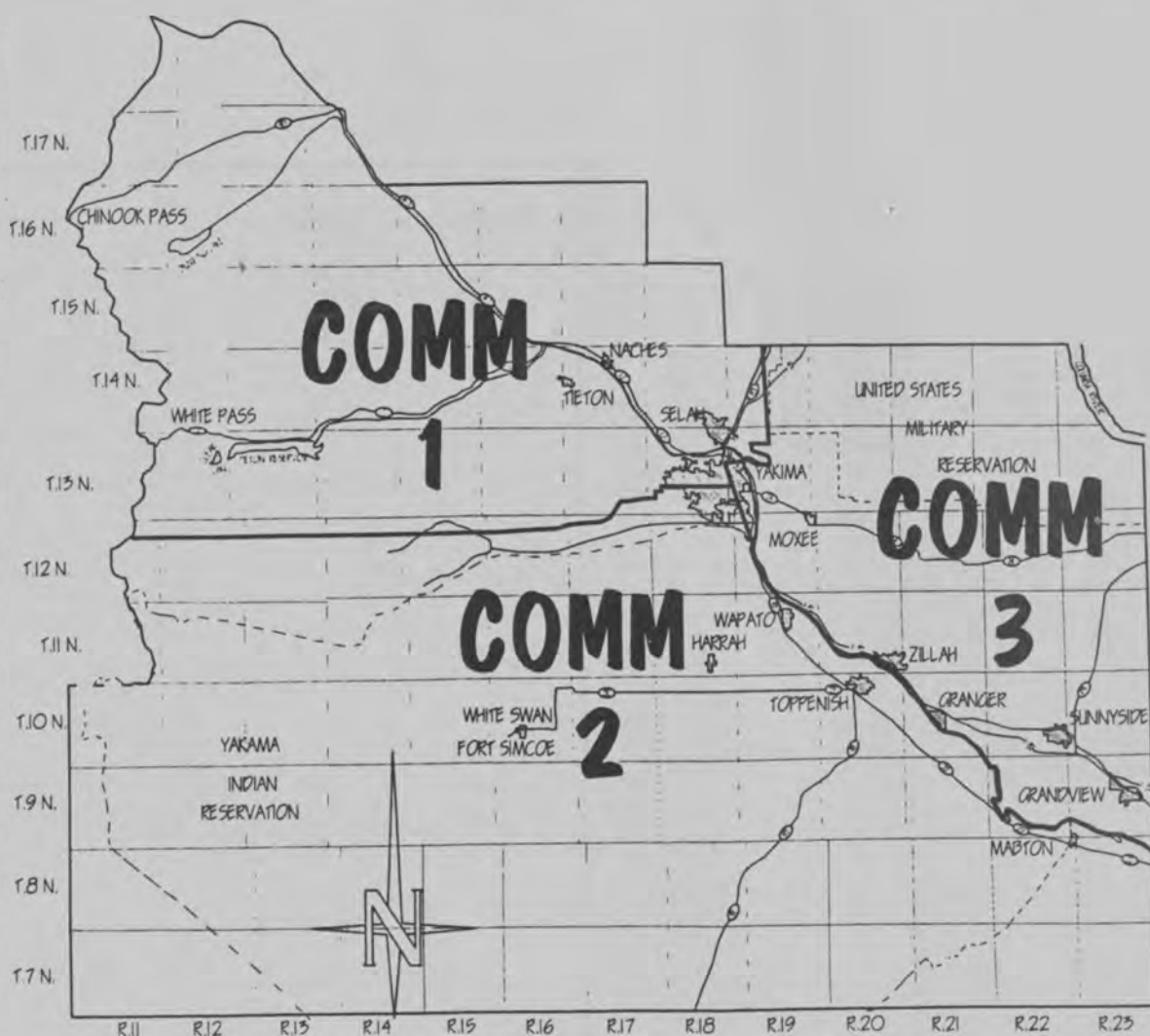
Voters' Pamphlet Statement Prepared By:
MALCOLM McPHEE, Levy Committee, MARGARET ST.
MARTIN, Levy Committee

Statement against

NO STATEMENTS¹ AGAINST THE PROPOSITION
WERE SUBMITTED.

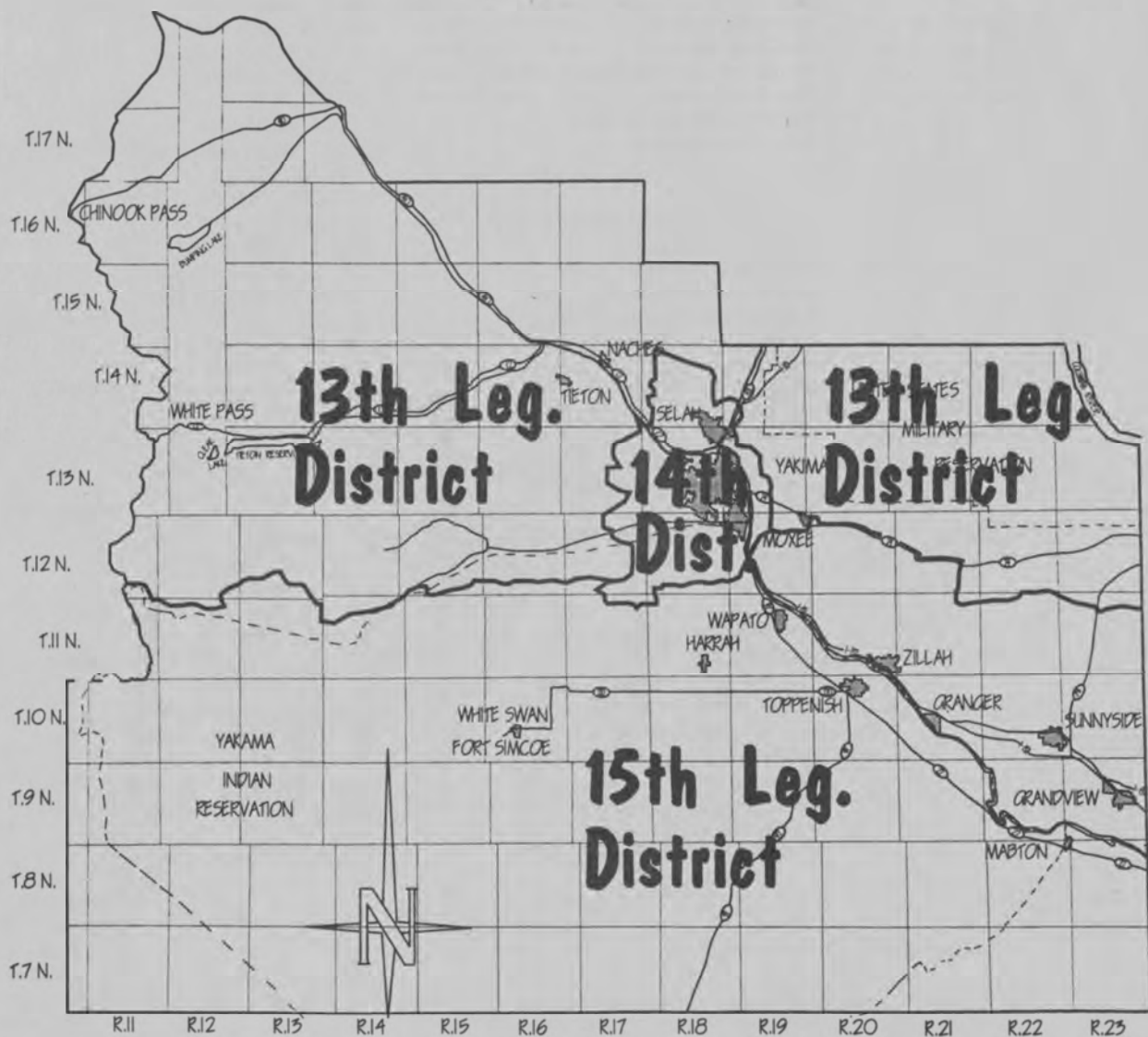


COUNTY COMMISSIONER DISTRICT MAP





LEGISLATIVE DISTRICT MAP





YAKIMA COUNTY POLLING PLACE LOCATIONS



PRECINCT (City of Yakima)

PRECINCT (City of Yakima)	POLLING PLACE	ADDRESS
0101	Masonic Center	510 N. Naches Av.
0104	Barge-Lincoln School	219 E. "I" St.
0105	VOTE BY MAIL	
0109	School Administration Building	104 N. 4th Av.
0110	Roosevelt Elementary School	120 N. 16th Av.
0111	Garfield School	612 N. 6th Av.
0114	Central Lutheran Church	1604 W. Yakima Av.
0116	McKinley School	621 S. 13th Av.
0118	Bethlehem Lutheran Church	801 Tieton Dr.
0120	Washington Middle School	501 S. 7th St.
0123	Washington Middle School	501 S. 7th St.
0126	S. E. Community Center	1211 S. 7th St.
0127	Bethlehem Lutheran Church	801 Tieton Dr.
0129	McKinley School	621 S. 13th Av.
0131	McClure School	1222 S. 22nd Av.
0133	Roosevelt Elementary School	120 N. 16th Av.
0134	Nob Hill School	801 S. 34th Av.
0136	Central Lutheran Church	1604 W. Yakima Av.
0138	Robertson School	2807 W. Lincoln Av.
0140	Hoover School	400 W. Viola Av.
0142	Hoover School	400 W. Viola Av.
0143	Garfield School	612 N. 6th Av.
0145	McClure School	1222 S. 22nd Av.
0146	Robertson School	2807 W. Lincoln Av.
0149	Robertson School	2807 W. Lincoln Av.
0151	Englewood Christian Church	511 N. 44th Av.
0153	Eisenhower High School	702 S. 40th Av.
0154	Eisenhower High School	702 S. 40th Av.
0155	McClure School	1222 S. 22nd Av.
0156	Hoover School	400 W. Viola Av.
0161	Hoover School	400 W. Viola Av.
0162	McClure School	1222 S. 22nd Av.
0163	Englewood Christian Church	511 N. 44th Av.
0167	Hoover School	400 W. Viola Av.
0169	Englewood Christian Church	511 N. 44th Av.
0170	Nob Hill School	801 S. 34th Av.
0172	Eisenhower High School	702 S. 40th Av.
0174	Englewood Christian Church	511 N. 44th Av.
0175	Englewood Christian Church	511 N. 44th Av.
0176	McClure School	1222 S. 22nd Av.
0178	Englewood Christian Church	511 N. 44th Av.
0179	Summitview Elementary	6305 W. Chestnut Av.
0180	Summitview Elementary	6305 W. Chestnut Av.
0183	Englewood Christian Church	511 N. 44th Av.
0185	Whitney School	4411 W. Nob Hill Blvd.
0186	Summitview Elementary	6305 W. Chestnut Av.
0189	VOTE BY MAIL	
0190	Castlevale School	2902 Castlevale Blvd.

(City of Grandview)

0301	VOTE BY MAIL	
0302	Senior Citizen Center	401 W. Second Av.
0303	Senior Citizen Center	401 W. Second Av.
0306	McClure Elementary School	915 W. Second Av.

(Town of Granger)

0501	Roosevelt Elementary School	
------	-----------------------------	--



YAKIMA COUNTY POLLING PLACE LOCATIONS



PRECINCT (Town of Harrah) 0701	POLLING PLACE VOTE BY MAIL	ADDRESS
(Town of Mabton) 0901	Mabton School Administration Building	306 N. Main St.
(City of Moxee) 1101	Moxee Elementary School	
(Town of Naches) 1301	Naches Middle School	Shafer Av.
(City of Selah) 1501	Selah Civic Center	216 S. 1st St.
1502	Selah Civic Center	216 S. 1st St.
1503	Selah Civic Center	216 S. 1st St.
1504	Selah Civic Center	216 S. 1st St.
(City of Sunnyside) 1701	Harrison Middle School	16th & Harrison
1703	Lincoln School	1110 S. 6th St.
1705	Our Savior's Lutheran Church	G'view & Taylor
1706	Lincoln School	1110 S. 6th St.
1708	Sunnyside Christian School	811 North Av.
(Town of Tieton) 1901	Tieton Middle School	
(City of Toppenish) 2101	Garfield School	505 Madison Av.
2103	Lincoln School	309 N. Alder St.
2107	Garfield School	505 Madison Av.
(City of Union Gap) 2301	Union Gap School Library	3200 2nd St.
2303	Union Gap School Library	3200 2nd St.
2304	VOTE BY MAIL	
2305	VOTE BY MAIL	
(City of Wapato) 2501	Wapato Police Station	202 E. 3rd St.
2503	Wapato High School	1103 S. Wasco Av.
(City of Zillah) 2701	Zillah Middle School Library	205 2nd St.
2702	Zillah Middle School Library	205 2nd St.
(Rural Precincts) 3001 Airport	Ridgeview Elementary School	609 W. Washington Av.
3002 Alfalfa	VOTE BY MAIL	
3003 Apple Valley	Apple Valley School	7 N. 88th Av.
3101 Belma	Waneta Grange Hall	
3102 Bradshaw	First Baptist Church	W. Wapato Rd.
3104 Buena	Buena Grange	Highland Drive
3105 Byron	VOTE BY MAIL	
3106 Butterfield	Terrace Heights Elementary	4209 Terrace Heights Rd.
3201 Cascade	VOTE BY MAIL	
3202 Castlevale	Castlevale School	2902 Castlevale Blvd.



YAKIMA COUNTY POLLING PLACE LOCATIONS



PRECINCT (Rural Precincts)	POLLING PLACE	ADDRESS
3203 Chinook	W.V. Nazarene Church	72nd & Nob Hill Blvd.
3204 Cliffdell	VOTE BY MAIL	
3205 Cottonwood	West Valley High School	9206 Zier Rd.
3206 Country Club	Terrace Heights Elementary	4209 Terrace Heights Rd.
3208 Cowiche Canyon	VOTE BY MAIL	
3209 Crescent	VOTE BY MAIL	
3301 E. Ahtanum	Perry Technical Institute	2011 W. Washington Av.
3303 E. Granger	Roosevelt Elementary School	
3304 E. Moxee	Moxee Elementary School	
3305 E. Naches	Naches Middle School	Shafer Av.
3306 E. Selah	State Hwy. Dept. Building	E. Selah Rd.
3307 E. Summitview	Robertson School	2807 W. Lincoln Av.
3308 E. Tieton	Tieton Middle School	
3309 E. Toppenish	VOTE BY MAIL	
3310 E. Wapato	Wapato High School	1103 S. Wasco Av.
3311 E. Zillah	Zillah High School	2nd Av.
3312 Englewood	Summitview Elementary	6305 W. Chestnut Av.
3313 Eschbach	Lower Naches Grange	1800 Old Naches Hwy.
3501 Fairgrounds	VOTE BY MAIL	
3502 Fairview	M. L. King, Jr., Elementary	2000 S. 18th St.
3503 Fullbright	VOTE BY MAIL	
3504 Firing Center	VOTE BY MAIL	
3601 Glade	VOTE BY MAIL	
3602 Gleed	Lower Naches Grange	1800 Old Naches Hwy.
3605 Gromore	Mountainview School	830 Stone Rd.
3701 Harrah Rural	Harrah Grade School	
3702 Harwood	West Valley High School	9206 Zier Rd.
3902 Liberty	Roosevelt Elementary School	
3903 Lower Wenas	Fire Station #4	Wenas Rd.
3904 Lower Naches	VOTE BY MAIL	
4001 McKinley	Heritage College Gym	McKinley Rd.
4002 Mabton Rural	Mabton School Admin Building	306 N. Main
4003 Moxee Rural	Moxee Elementary School	
4101 Naches Hts.	Naches Heights Fire Station	
4102 Nile	Nile Club House	Nile Rd.
4104 N. Cowiche	Highland High School	
4105 N. Grandview	McClure Elementary School	915 W. Second Av.
4106 N. Holland	E. Valley Admin. Building	2002 Beaudry Rd.
4108 N. Selah Hgts.	Selah Heights Grange	McGonagle Rd.
4109 N. Sunnyside	Sunnyside Christian School	811 North Av.
4110 N. Toppenish	Toppenish High School	Ward Rd.
4111 N. Gleed	Lower Naches Grange	1800 Old Naches Hwy.
4112 N. Selah	Selah Civic Center	216 S. 1st St.
4114 N. Tampico	VOTE BY MAIL	
4115 N. Wenas	VOTE BY MAIL	
4302 Orchard	VOTE BY MAIL	
4303 Outlook	Outlook School	Van Belle Rd.
4401 Parker Hgts.	Parker Heights School	Parker Heights Loop Rd.
4402 Pomona	State Hwy. Dept. Building	E. Selah Rd.
4501 Rest Haven	Terrace Hgts. Elementary	4209 Terrace Hts Rd.
4502 Roza	Sunnyside Christian School	811 North Av.
4503 Rimrock	VOTE BY MAIL	
4504 Roza Hill	Terrace Heights Elementary	4209 Terrace Heights Rd.
4601 Scenic	Englewood Christian Church	511 N. 44th Av.
4602 Selah Central	Selah Civic Center	216 S. 1st St.
4603 Selah Extension	Selah Civic Center	216 S. 1st St.
4604 Selah Rural	Selah Civic Center	216 S. 1st St.
4605 Sheller	Harrison Middle School	16th & Harrison
4606 Slavin	Terrace Heights Elementary	4209 Terrace Heights Rd.



YAKIMA COUNTY POLLING PLACE LOCATIONS



PRECINCT (Rural Precincts)	POLLING PLACE	ADDRESS
4607 S. Airport	VOTE BY MAIL	609 W. Washington Av.
4608 S. Broadway	Ridgeview Elementary School	
4609 S. Cowiche	Highland High School	
4610 S. Grandview	McClure Elementary School	915 W. Second Av.
4611 S. Holland	E. Valley Admin. Building	2002 Beaudry Rd.
4613 S. Nob Hill	Wilson Middle School	902 S. 44th Av.
4615 S. Sunnyside	Lincoln School	1110 S. 6th St.
4616 S. Toppenish	Mt. Adams Country Club	Goldendale Hwy.
4618 Sunny Valley	Harrison Middle School	
4621 Suntides	Lower Naches Grange	1800 Old Naches Hwy.
4622 S. Zillah	Zillah High School	2nd Av.
4623 S. Ahtanum	Ahtanum Grade School	3006 S. Wiley Rd.
4624 S. Hills	VOTE BY MAIL	
4625 S. Wenas	VOTE BY MAIL	
4626 Summitview	VOTE BY MAIL	
4627 S. Naches Hgts.	VOTE BY MAIL	
4628 S. Outlook	VOTE BY MAIL	
4801 Tampico	Weed Memorial Hall	
4802 Terrace Hgts.	Terrace Heights Elementary	4209 Terrace Heights Rd.
5001 Waneta	VOTE BY MAIL	
5002 Wendell Phillips	Lincoln School	1110 S. 6th St., S'side
5003 W. Ahtanum	Ahtanum Pioneer	8500 Ahtanum Rd.
5006 W. Nob Hill	VOTE BY MAIL	
5007 W. Parker	VOTE BY MAIL	
5009 W. Wapato	Wapato High School	1103 S. Wasco Av.
5010 Westview	Apple Valley School	7 N. 88th Av.
5011 Westwood	W. V. Nazarene Church	72nd & Nob Hill Blvd.
5012 White Swan	White Swan High School	
5013 Wide Hollow	W. V. Nazarene Church	72nd & Nob Hill Blvd.
5014 Wiley City	Ahtanum Grade School	3006 S. Wiley Rd.
5016 W. Selah	Selah Civic Center	216 S. 1st St.
5017 W. Moxee	E. Valley Admin. Building	2002 Beaudry Rd.
5018 West Valley	Apple Valley School	7 N. 88th Av.
5101 Yakima Ridge	VOTE BY MAIL	
5201 Zier	West Valley High School	9206 Zier Rd.

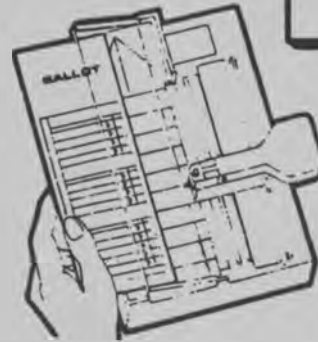


VOTING DEVICE INSTRUCTIONS



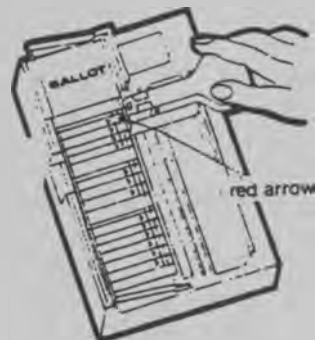
1. Place the ballot card UNDER the plastic shield from the LEFT SIDE of the punching device. The card must be inserted fully and lie completely flat within the holding tray of the punching device.

1



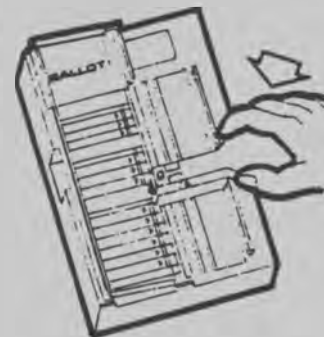
2. Slide the punching arm to the candidate or issue of your choice in the first contest. The red arrow on the punching arm should be "point-to-point" with the arrow on the ballot card which indicates the voting position for your choice in that contest.

2



3. Firmly depress the punching lever and release to record your vote. Move the punching lever to the voting position of your candidate in the next contest and repeat the punching process. Continue process until all choices have been made.

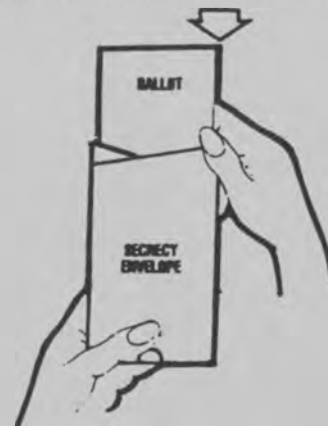
3



When you have completed voting the ballot card face, remove, turn over and re-insert the card and continue the voting process.

4. When you have voted both sides of all ballot cards, place the ballot cards in the secrecy envelope provided, with the ballot stubs at the top of the envelope. DO NOT FOLD BALLOT CARD. Take the envelope, containing the voted ballot cards, to the Official located at the ballot box.

4





NOTES

This image shows a single sheet of white paper with horizontal ruling lines. The lines are evenly spaced and run across the width of the page. There is no handwriting or other markings on the paper.

WORLD WAR II 1944 VETERANS VOTE



"Our voting booth was simply a tree, and we had a lot of these... It was the first time I ever voted in any election and I recognized it as a special privilege, for that was one of the main principles we were fighting for."

Allan C. Barger
Port Orchard

"Voting was a morale booster. After four years of war, it made me feel that what I was doing was important... I goofed! It was the only time in my life that I had a chance to vote for Franklin Roosevelt and I voted for Tom Dewey. I knew the names of some of the state and local people and I probably got some of them right."

Robert Edlin
Port Orchard

"I remember well the election of 1944 while serving with the Army Air Corps in Italy. My four tent buddies and I unanimously voted for Franklin D. Roosevelt for President."

Charles D. Johnson
Endicott



Thanks to Washington State World War II veterans for submitting their voting stories.

All photographs courtesy of the Fort Lewis Public Affairs Office and The Pentagon Visual Media Library.

VOTING IN THE STATE OF WASHINGTON

Voter qualifications

To register to vote, you must be:

- A citizen of the United States
- A legal resident of Washington state
- At least 18 years old by election day

In the state of Washington, you do not have to register by political party or declare political party membership to vote in the state's regular primaries or general elections.

Registration deadlines

You may register to vote at any time, but you must be registered at least **30 days** in advance of an election if you wish to vote **at a polling place** on election day.

You may also register between 30 and 15 days before an election, but you must do so at a location designated by the county elections officer, and you will be required to vote by absentee ballot.

How to register

Washington citizens have access to several convenient methods of signing up to vote, including registration by mail and "Motor Voter" registration.

Mail-in registration forms are available from your county auditor or county elections department as well as many public libraries, schools and other government offices. You may also request a form by filling out the box at the right and mailing it to the Secretary of State.

"Motor Voter" registration is offered when you renew or apply for your driver's license. In most instances, a motor voter registration takes less than a minute to complete.

Change of residence

If you move to a **new** county, you must complete a new voter registration.

If you move within the **same** county, you do not need to re-register, but you must request a transfer of your registration. This can be done by calling or writing your county elections department, or by using a mail-in voter registration form.

NOTE: You must re-register or transfer your registration at least **30 days** before the election to be eligible to vote in your new precinct.

Absentee ballots

You may request an absentee ballot as early as 45 days before an election. (No absentee ballots are issued on election day except to hospitalized voters.)

Absentee ballots may be requested either by phone or by mail from the county elections officer. You may also apply — in writing — to automatically receive an absentee ballot before each election.

NOTE: Absentee ballots must be signed and postmarked or delivered to the county elections officer **on or before election day**.

Election dates and poll hours

State primaries are generally held on the third Tuesday in September. The presidential primary, conducted once every four years, is held on the fourth Tuesday in May, or on a date selected by the Secretary of State.

General elections are held on the Tuesday after the first Monday in November. Polling hours for all primaries and elections are **7:00 a.m. to 8:00 p.m.**

Voter information

If you need assistance with registration and voting, contact your county auditor or elections department.

Special services

The Office of the Secretary of State provides a toll-free voter information service to residents within the state of Washington. This service will be operated Monday through Friday from 9:00 a.m. to 8:00 p.m., beginning Wednesday, October 19, and continuing through the day of the election, November 8. In many instances, assistance can be provided to those who have difficulty reading this pamphlet because their primary language is not English.

Voters may also call to request any of the following special Voters Pamphlet versions: Tape-cassette, Braille, Spanish-language or Chinese-language.

For more information, call the Secretary of State Voter Information Hotline at 1-800-448-4881.

Request for Mail-in Voter Registration Form (Please Print)

Name: _____

Address: _____

City: _____ Zip Code: _____

Telephone: _____ No. of forms requested: _____

**MAIL TO: Office of the Secretary of State
Voter Registration Services
P.O. Box 40230 • Olympia, WA 98504-0230**



VOTING BY ABSENTEE BALLOT

INSTRUCTIONS: Any registered voter may apply for an absentee ballot. Contact your county auditor or elections department for further information. For your convenience, addresses and telephone numbers are listed below.

NOTE: Also listed below are phone numbers for the hearing impaired using Telecommunications Device for the Deaf (TDD) service. The Office of the Secretary of State also provides a toll-free voter information service for the hearing impaired: **TOLL-FREE HEARING IMPAIRED VOTER INFORMATION 1-800-422-8683**. If you are using an "800 number" for TDD service, you must be prepared to give the relay service operator the number for your county.

COUNTY	ADDRESS	CITY	ZIP	TELEPHONE NUMBER	HEARING IMPAIRED TDD SERVICE
Adams	210 West Broadway	Ritzville	99169	(509) 659-0090 Ext 203	(509) 659-1122
Asotin	P.O. Box 129	Asotin	99402	(509) 243-2084	1-800-855-1155
Benton	P.O. Box 470	Prosser	99350	(509) 783-1310 Ext 5618	(509) 736-3063
Chelan	P.O. Box 400	Wenatchee	98807	(509) 664-5432	1-800-833-6388
Clallam	223 East 4th St.	Port Angeles	98362	(206) 417-2221	1-800-833-6388
Clark	P.O. Box 9812	Vancouver	98666-5000	(206) 699-2345	(206) 737-6032
Columbia	341 East Main St.	Dayton	99328	(509) 382-4541	(509) 382-4541
Cowlitz	207 North 4th	Kelso	98626	(206) 577-3005	1-800-833-6388
Douglas	P.O. Box 456	Waterville	98858	(509) 884-9403	(509) 884-9477
Ferry	P.O. Box 498	Republic	99166	(509) 775-5200	1-800-833-6388
Franklin	P.O. Box 1451	Pasco	99301	(509) 545-3536	1-800-344-4358
Garfield	P.O. Box 278	Pomeroy	99347	(509) 843-1411	1-800-344-4358
Grant	P.O. Box 37	Ephrata	98823	(509) 754-2011 Ext 337	(509) 754-4646
Grays Harbor	P.O. Box 751	Montesano	98563	(206) 249-4232	(206) 249-6575
Island	P.O. Box 5000	Coupeville	98239	(206) 679-7366	(206) 679-7305
Jefferson	P.O. Box 563	Port Townsend	98368	(206) 385-9119 1-800-831-2678	(206) 385-9117
King	500 4th Avenue	Seattle	98104	(206) 296-8683	(206) 296-0109
Kitsap	614 Division St.	Port Orchard	98366	(206) 876-7128	1-800-833-6388
Kittitas	205 W. 5th	Ellensburg	98926	(509) 962-7503	1-800-833-6388
Klickitat	205 S. Columbus	Goldendale	98620	(509) 773-4001	1-800-833-6388
Lewis	P.O. Box 29	Chehalis	98532-0029	(206) 740-1278 1-800-562-6130	(206) 740-1480
Lincoln	P.O. Box 366	Davenport	99122	(509) 725-4971	1-800-833-6388
Mason	P.O. Box 400	Shelton	98584	(206) 427-9670 Ext 470 1-800-562-5628	1-800-344-4358
Okanogan	P.O. Box 1010	Okanogan	98840	(509) 422-7240	1-800-855-1155
Pacific	P.O. Box 97	South Bend	98586	(206) 875-9317	(206) 875-9400
Pend Oreille	P.O. Box 5015	Newport	99156	(509) 447-3185	(509) 447-3186
Pierce	2401 S. 35th Rm. 200	Tacoma	98409-7484	(206) 591-7430 1-800-446-4979	1-800-344-4358
San Juan	P.O. Box 638	Friday Harbor	98250	(206) 378-3357	(206) 378-4151
Skagit	P.O. Box 1306	Mt. Vernon	98273	(206) 336-9305	(206) 336-9386
Skamania	P.O. Box 790	Stevenson	98648	(509) 427-9420	1-800-833-6388
Snohomish	3000 Rockefeller Avenue	Everett	98201	(206) 259-4726 1-800-562-4367	(206) 388-3700
Spokane	W. 1116 Broadway	Spokane	99260-0020	(509) 456-2320	(509) 456-2333
Stevens	P.O. Box 189/215 S. Oak	Colville	99114	(509) 684-7514	1-800-833-6388
Thurston	2000 Lakeridge Dr. S.W.	Olympia	98502	(206) 786-5408 1-800-624-1234 Ext 5408	(206) 754-2933
Wahkiakum	P.O. Box 543	Cathlamet	98612	(206) 795-3219	1-800-833-6388
Walla Walla	P.O. Box 1856	Walla Walla	99362	(509) 527-3204	1-800-833-6388
Whatcom	P.O. Box 398	Bellingham	98227	(206) 676-6745	(206) 738-4555
Whitman	P.O. Box 350	Colfax	99111	(509) 397-6270	1-800-833-6388
Yakima	128 N. 2nd St. #117	Yakima	98901	(509) 575-4044	(509) 575-4078

FIND YOUR DISTRICT

To determine which legislative or congressional district you reside in, check this list. The district column will be blank if your zip code has more than one legislative or congressional district. In that instance, contact your county auditor's office or elections department.

COUNTY		ZIP	CG	LG	COUNTY		ZIP	CG	LG
YAKIMA	*	98901	4		YAKIMA		98935	4	15
YAKIMA		98902	4	14	YAKIMA	*	98936	4	
YAKIMA	*	98903	4		YAKIMA	*	98937	4	
YAKIMA		98904	4	14	YAKIMA		98938	4	15
YAKIMA		98907	4	14	YAKIMA		98939	4	15
YAKIMA	*	98908	4		YAKIMA	*	98942	4	
YAKIMA		98909	4	14	YAKIMA		98944	4	15
YAKIMA		98920	4	15	YAKIMA		98947	4	13
YAKIMA		98921	4	15	YAKIMA		98948	4	15
YAKIMA		98923	4	13	YAKIMA		98951	4	15
YAKIMA		98929	4	13	YAKIMA		98952	4	15
YAKIMA		98930	4	15	YAKIMA		98953	4	15
YAKIMA		98932	4	15	YAKIMA		99350	4	15
YAKIMA		98933	4	15					



ABSENTEE BALLOT REQUEST

TO BE FILLED OUT BY APPLICANT

I HEREBY DECLARE THAT I AM A REGISTERED VOTER
PLEASE PRINT IN INK

Registered Name _____

Street Address _____

City _____ Zip _____

Telephone: (Day) _____ (Evening) _____

For identification purposes only:

(Optional) Birth Date _____ Have you recently registered to vote? Yes ☐ No ☐

TO BE VALID, YOUR SIGNATURE MUST BE INCLUDED

Date _____

SIGNATURE _____

SEND MY BALLOT TO THE FOLLOWING ADDRESS:

Mailing Address _____

City _____

State _____

Zip _____ Country _____

THIS APPLICATION IS FOR:

General Election Only

November 8, 1994

☐

Permanent Request

All Future Elections

☐

FOR OFFICE USE ONLY:

Precinct Code _____

Levy Code _____

Ballot Code _____

Ballot Mailed _____

WASHINGTON STATE VOTERS PAMPHLET

State General Election, November 8, 1994



BULK RATE
U.S. POSTAGE
PAID
Seattle, WA
Permit No. 1216
Car Rt. Presort

RESIDENTIAL PATRON, LOCAL

EDITION 3