

WA
353.1
St2pa
1993
ed6
c.2

STATE OF WASHINGTON VOTERS PAMPHLET



NOVEMBER 2, 1993

Published By The

SECRETARY OF STATE

RECEIVED
OCT 1993
WASHINGTON STATE LIBRARY

Lynden
Whatcom
Steilacoom
New Market
Claquato
Bruceport
Monticello
Whitman Mission
El. Vancouver
on City



EDITION 6

SNOHOMISH COUNTY AUDITOR

INTRODUCTION TO THE 1993 VOTERS PAMPHLET

It is my pleasure to introduce you to the 1993 Washington State Voters Pamphlet. I am especially pleased to extend a very special welcome to the 348,000 new voters who have registered under the state's "Motor Voter" program at numerous locations around Washington.

As you will note by the cover, this year's pamphlet commemorates the Sesquicentennial of the Oregon Trail. From 1843 to the early 1860s, more than 300,000 emigrants traveled over the 2,000-mile Oregon Trail to start a new life in the Pacific Northwest. Many of these travelers branched off the Trail in northern Oregon to head for what is now the state of Washington — founding towns such as Walla Walla, New Market (Tumwater), Claquato (near Chehalis), Steilacoom and Lynden.

These emigrants and their descendants brought to the West new thoughts about government and citizen rights. They established a unique state government which diffused power among a host of elective offices, and gave greater rights and privileges to the public.

This voters pamphlet is a direct result of the populist movement which grew from the new ideas of those who came here along the Oregon Trail. Washington's Constitution gives its citizens the right to a voters pamphlet containing information on issues appearing at each general election. Our state was one of the first in the nation to provide a voters pamphlet to its citizens.

And we continue on with this heritage of bringing new ideas and innovative programs to make state government and our elections system more accessible and convenient for citizens. In addition to Motor Voter, we have also seen reforms such as the expansion of the ongoing absentee ballot program to all citizens, a reduction in the 30-day voter registration deadline, and, in the coming year, voter registration by mail.

These efforts reflect our state's rich tradition of promoting voter awareness and voter participation. In the coming days, I urge you to join in this tradition by making use of this voters pamphlet. It contains extensive information on the measures appearing on the statewide ballot and on election procedures and voting. Please study it thoroughly, and be sure to cast your vote on November 2.

With best wishes,



RALPH MUNRO
Secretary of State

This pamphlet was prepared by Erika E. Aust, Assistant Elections Director, Office of the Secretary of State; Mary Bettger, Election Coordinator, Snohomish County; and Candace A. McDonald, Composition Coordinator.



TABLE OF CONTENTS

Sample Ballot	4	Absentee Ballot Requests	37
Voting in the State of Washington	5	Organic Act of 1853	38
Initiative Measure 593	6	Snohomish County	40
Initiative Measure 601	8	Snohomish County Offices	42
Initiative Measure 602	10	Cities & Towns	44
House Joint Resolution 4200	12	School Districts	51
House Joint Resolution 4201	14	Fire District	57
Text of State Measures	16	Water District	58
Comment Sheet	35	Hospital District	59
Voter Information	36	Local Measure	60

NON-PARTICIPATING DISTRICTS

The following districts have chosen **not** to participate in the Local Voters Pamphlet. Due to this decision, local candidates and/or measures will not be included in this pamphlet.

CITIES/TOWNS

Darrington

SCHOOL DISTRICTS

Lake Stevens School Dist. #4

Index School Dist. #63

Darrington School Dist. #330

WATER DISTRICTS

Silver Lake

PARK & RECREATION DISTRICTS

Monroe

FIRE DISTRICTS

#7 - Bear Creek/Maltby

#8 - Lake Stevens

#11 - Silver Lake

#12 - Marysville

#15 - Tulalip

#16 - Lake Roesiger

#17 - Granite Falls

#18 - Bryant/Boulder

#19 - Silvana

#20 - Lake Goodwin

#21 - Arlington

#22 - Getchell

#23 - Granite Falls

#24 - Darrington

#25 - Oso/Trafton

#26 - Gold Bar

#27 - Hat Island

Special Note: The Town of Index, Startup Water District, and Fire Protection Districts 1 and 10 chose to participate in the Local Voters Pamphlet, however the candidates did not submit statements. Therefore, these district's candidates are only noted on the sample ballot.

Secretary of State Toll-Free Hotlines

1-800-448-4881

TDD (Hearing Impaired) 1-800-422-8683

SAMPLE BALLOT*

State of Washington pg. 6

Initiative 593 Yes ☐ No ☐
 Initiative 601 Yes ☐ No ☐
 Initiative 602 Yes ☐ No ☐
 H.J.R. 4200 Yes ☐ No ☐
 H.J.R. 4201 Yes ☐ No ☐

Snohomish County pg. 40

Council, Dist. No. 1

Ross Kane (D) ☐
 John Garner (R) ☐
 Ronald B. Love (I) ☐

Auditor

Bob Terwilliger (D) ☐
 Al Schweppe (R) ☐

City of Arlington pg. 44

Council, Pos. No. 1

Montey O. Hagenston ☐

Council, Pos. No. 2

Tim Daugherty ☐
 Bea Randall ☐

Council, Pos. No. 3

Keith Pace ☐
 Larry Caldwell ☐

Council-at-Large

Don Regan ☐

City of Granite Falls

Prop. No. 1 pg. 60 Yes ☐ No ☐

Mayor pg. 46

James Raymond ☐
 Rella R. Morris ☐

Council, Pos. No. 1

Philip (Doc) Dockendorff ☐
 Hiram S. Wilburn ☐

Council, Pos. No. 2

Paul R. Bilbruck, Sr. ☐
 Reece Morris ☐

Council, Pos. No. 3

Thomas R. Bergan ☐

Council, Pos. No. 4

Keith Kenworthy ☐

Council, Pos. No. 5

Leon D. Goff ☐
 Edward E. Stemler ☐

City of Stanwood pg. 49

Mayor

Cliff Strong ☐
 Donald Moa ☐

Council, Pos. No. 1

Matthew J. McCune ☐

Council, Pos. No. 2

Robert S. Lunn ☐

Council, Pos. No. 4

Barbara Gstohl ☐

Arlington School Dist. No. 16 pg. 51

District No. 3

Carolyn Erickson ☐
 Charles L. (Chuck) Thurman ☐

District No. 5

Rod R. Beckmen ☐

Marysville School Dist. No. 25 pg. 52

District No. 1

Donald C. Hatch, Jr. ☐

District No. 4

Victoria Graves ☐
 Helen M. Mount ☐

Lakewood School Dist. No. 306 pg. 53

District No. 1

Nancy K. Barton ☐

District No. 2

Roger A. Plautz ☐

District No. 3

Kenneth P. Hermanson ☐

Granite Falls School Dist. No. 332 pg. 54

District No. 1

Mary J. Bakko ☐
 Richard W. Short ☐

District No. 3

Dennis J. Stevens ☐
 John W. Morrison ☐

District No. 4

Ronald Orta ☐
 Robert A. Quarterman ☐

District No. 5

Craig H. Emery ☐

Stanwood School Dist. No. 401 pg. 56

District No. 1

Cliff W. Henning ☐

District No. 3

Susan M. Cole ☐
 MaryBeth Fisher ☐

Fire Protection Dist. No. 14 pg. 57

Position No. 1

Jack A. Stedman ☐

Position No. 3

Carl A. Koch ☐
 Pat Cottrell ☐

Blue Spruce Grove Water Dist. pg. 58

Position No. 2

Raymond W. Early ☐
 Fran Hamlin ☐

Hospital Dist. No. 3 pg. 59

District No. 2

Judy Dellwing ☐

Position No. 5

Mary Jean Kraski ☐

VOTING IN THE STATE OF WASHINGTON

Voter qualifications

To register to vote, you must be:

- A citizen of the United States
- A legal resident of Washington state
- At least 18 years old by election day

In the state of Washington, you do not have to register by political party or declare political party membership to vote in the state's regular primaries or general elections.

Registration deadlines

You may register to vote at any time, but you must be registered at least **30 days** in advance of an election if you wish to vote **at a polling place** on election day.

You may also register between 30 and 15 days before an election, but you must do so at a location designated by the Snohomish County Auditor's Office, and you will be required to vote by absentee ballot.

Where to register

- County Auditor or County Elections Department
- City or Town Clerk offices
- State Driver Licensing offices
- Public schools
- Most public libraries
- Most state agencies

Change of residence

If you move to a **new** county, you must complete a new voter registration.

If you move within the **same** county, you do not need to re-register, but you must request a transfer of your registration. This can be done by calling or writing your county elections department, or by requesting a transfer from a voter registrar (see "Where to register"). Failure to do so could cause cancellation of your voter registration.

NOTE: You must re-register or transfer your registration at least **30 days** before the election to be eligible to vote in your new precinct.

Absentee ballots

You may request an absentee ballot as early as 45 days before an election. (No absentee ballots are issued on election day except to hospitalized voters.)

Absentee ballots may be requested either by phone (259-4726) or by mail from the Snohomish County Auditor's Office. If you would like to automatically receive an absentee ballot before each election, call 388-3444 for more information.

NOTE: Absentee ballots must be signed and post-marked or delivered to the county elections officer **on or before election day**.

Election dates and poll hours

General elections are held on the Tuesday after the first Monday in November. Polling hours for all primaries and elections are **7:00 a.m. to 8:00 p.m.**

Voter information

If you need assistance with registration and voting, contact the Snohomish County Auditor's Office at 388-3444.

Special services

The Office of the Secretary of State provides a toll-free voter information service to residents within the state of Washington. This service will be operated Monday through Friday from 9:00 a.m. to 8:00 p.m., beginning Tuesday October 12, and continuing through the day of the election, November 2. In many instances, assistance can be provided to those who have difficulty reading this pamphlet because their primary language is not English.

Voters may also call to request additional copies of the Voters Pamphlet or any of the following special versions of the Voters Pamphlet: Tape-cassette, Braille, Spanish-language or Chinese-language.

For more information, call the Secretary of State Voter Information Hotline at 1-800-448-4881.



INITIATIVE MEASURE 593

TO THE PEOPLE

Note: The ballot title and explanatory statement were written by the Attorney General as required by law. The complete text of Initiative Measure 593 begins on page 16.

Statement for

It's time to get tougher on violent criminals.

The problem is clear: the overwhelming majority of violent crime is committed by less than 10% of violent criminals. And most of them will re-offend again when released.

CURRENT STATE LAW IS MUCH TOO WEAK

Under current state laws, the average prison term recommended for a child molester with two previous sex felony convictions on his record is just 9 years, six months. *That's for a third offense.*

For someone convicted of 1st degree robbery with two violent felony convictions already on his record, the recommended sentence is just 5 years. That doesn't count time off for "good behavior."

Why let proven repeat offenders out to offend again? Let's make sure that nobody becomes their 4th, 5th or 6th victim.

INITIATIVE 593 GETS TOUGH ON VIOLENT CRIME

Under 593, anyone convicted of a third violent offense goes to prison for life. No early release. No parole. No furloughs. No loopholes. Three strikes and you're out.

Initiative 593 brings accountability and the certainty of punishment back to our criminal justice system. In aiming at three time violent offenders, it targets the "worst of the worst" criminals who most deserve to be behind bars. With 593 that's where they'll stay. Without it, most of them won't.

Official Ballot Title:

Shall criminals who are convicted of "most serious offenses" on three occasions be sentenced to life in prison without parole?

The law as it now exists:

Criminal sentencing is now governed by the Sentencing Reform Act (Chapter 9.94A RCW). The judge determines the sentence for each person convicted of a crime, based on standard sentencing ranges set down in the law. The

INITIATIVE 593 SENDS THE RIGHT MESSAGE TO CRIMINALS

Not only does 593 keep our most serious offenders off the streets, it also sends a clear and unmistakable message to all other criminals in Washington: either obey the law or leave the state — for good.

People from all over the state are supporting 593 to make our streets and neighborhoods safer.

For more information, call (206) 462-7353.

Rebuttal of Statement against

593's opponents claim that violent offenders can already be locked up for life. The problem is, they aren't. That will change when 593 becomes law. Three time serious felons will stay behind bars for life. Only a pardon issued by the Governor could authorize their release.

The crimes covered by 593 are serious, violent felonies, not "bar fights" or car accidents. 593 keeps the "worst of the worst" in prison. Isn't that where they belong?

Voters Pamphlet Statement Prepared by:

JOHN CARLSON, Washington Institute for Policy Studies, KVI Radio; IDA BALLASIOTES, State Representative; BRIAN EBERSOLE, Speaker, House of Representatives.

Advisory Committee: HELEN HARLOW, Tennis Shoe Brigade; PAM ROACH, State Senator; JOHN LADENBURG, Pierce County Prosecutor; TERRY MANGAN, Spokane Police Chief; TOM CAMPBELL, State Representative.

standard sentence range is determined by calculating an "offender score," which takes into account the nature of the crime committed as well as prior convictions for other crimes. Prior convictions for serious offenders increase the "offender score" and the standard sentencing range if there is a later conviction. Under special circumstances the judge may give a sentence outside the sentencing range. Current law does not require a specific sentence for repeat offenders.

The effect of Initiative Measure 593, if approved into law:

This initiative would create a new category of "persistent offenders" consisting of persons who have been convicted three or more times of "most serious crimes." The initiative specifies which crimes will be defined as "most serious crimes" (section 3 of the initiative), essentially consisting of all class A felonies and all class B felonies involving harm

or threats of harm to persons. When a "persistent offender" is sentenced, the initiative would require the judge to impose a sentence of total confinement for life without possibility of parole. For the crime of aggravated murder in the first degree, the initiative would preserve present law allowing the death sentence in some cases.

"Persistent offenders" would not be eligible for community custody, earned early release time, furlough, detention, partial confinement, work crew, work release, or any other form of early release. Judges and correctional facilities would be authorized to warn about the consequences of becoming a "persistent offender." The governor could still issue pardons or clemency orders on a case-by-case basis, and would be required to issue periodic reports on the progress of any offenders released through pardons or clemency.

Statement against

INITIATIVE 593: REVIVING FAILED AND REJECTED LAWS

Washington used to have a law like "three strikes you're out." It didn't work. It was extremely costly, locked up people who didn't need to be locked up to protect us, and locked up people long past the age when they were a risk. Washington's citizens and legislature have wisely chosen *not* to endorse recent, similar proposals.

INITIATIVE 593: VERY COSTLY, WITHOUT INCREASING OUR SAFETY

Repeat "serious offenders" after middle age are not the norm. 593 will unnecessarily result in expensive geriatric wards in our prisons for people who are long past the age when they are a threat.

593 needlessly forces us to spend nearly \$26,000 per person, per year, for an average of thirty years, to feed, clothe and house people who aren't a risk to us. Nearly \$800,000 for each person!

We can use current law *now* to put away, for a long time, those who need to be put away. 593 takes away the power to *choose* who should be locked up for life.

INITIATIVE 593: INCLUDES OFFENSES NOT MERITING LIFE IMPRISONMENT

Proponents claim 593 only applies to "most serious" offenses. Not true! 593 also includes reckless car accidents with injuries, as well as bar fights if a blow accidentally, recklessly injures someone.

INITIATIVE 593: NEEDLESSLY HIGH COST

593 falsely offers the appearance of a quick fix solution to a serious problem.

593 *won't* reduce crime. Repeat, serious offenders can *already* be locked up until they are no longer a danger.

593 *will* increase your taxes, or force the legislature to take away money from jobs, healthcare, education and other programs that *do* serve to prevent crime.

Rebuttal of Statement for

593's proponents aren't telling the whole truth. Current law already keeps violent criminals in prison an average of 15-25 years. Under 593, reckless car accidents with injuries are treated the same as rape and murder. \$12,000,000 will be required over the next few years for additional prisons for people *not* likely to re-offend. 70-year-olds don't repeat violent crimes, *but* have enormous medical costs. 593 plays on our fears, but is in truth expensive and ineffective.

Voters Pamphlet Statement Prepared by:

JOHN A. STRAIT, Associate Professor of Law; CARL MAXEY, Attorney at Law.

Advisory Committee: REVEREND JOHN BOONSTRA, Executive Minister, Washington Association of Churches; JUDGE ROBERT WINSOR, retired; JUDGE SOLIE M. RINGOLD, retired; MONICA ZUCKER; JOHN M. JUNKER, Professor of Law.



INITIATIVE MEASURE 601

TO THE PEOPLE

Note: The ballot title and explanatory statement were written by the Attorney General as required by law. The complete text of Initiative Measure 601 begins on page 25.

Statement for

I-601 SETS REASONABLE LIMITS ON TAXES AND SPENDING

Politicians can't control spending and Washington's citizens end up paying the bill through higher taxes. With I-601, the Taxpayer Protection Act, the people can set reasonable spending limits and give themselves the power to decide whether tax hikes are really needed.

THE PEOPLE CAN TAKE CONTROL OF TAXES AND SPENDING

I-601 is a cure for overspending, crisis cuts in programs and emergency tax increases:

- Voters would decide whether higher taxes are needed.
- Spending increases would be limited to the rate of inflation and state population growth.
- A "rainy day" fund would be created for economic bad times.

WE CAN'T AFFORD MORE OF THE SAME

Since 1985, nearly 20,000 new state employees have been hired. Washington's population has grown by about 27 percent since 1980, yet the state's budget has seen over a 140 percent increase since 1983. In 1990, the Legislature spent a billion dollar surplus.

Last November, Washingtonians thought they were voting for change, but they instead got more of the same. Despite nearly a billion dollars in new tax revenues for 1993-95, the Legislature and governor gave us a state budget requiring over a billion dollars in new taxes and fees.

NATIONAL NEWSPAPER PRAISES I-601

On July 9th, the following appeared in *The Wall Street*

Official Ballot Title:

Shall state expenditures be limited by inflation rates and population growth, and taxes exceeding the limit be subject to referendum?

The law as it now exists:

The state is currently operating under a law (Chapter 43.135 RCW, enacted by initiative in 1979), which limits state tax revenue in each fiscal year to an amount calculated by multiplying the previous year's revenue limit by the average state personal income ratio for the three calendar years immediately preceding the beginning of the fiscal year in question. For instance, the tax revenue limit for fiscal 1994 (which began on July 1, 1993) is the limit for fiscal 1993 multiplied by the average increase in personal income for calendar 1990, 1991, and 1992. The starting point for these calculations was the revenue received in fiscal 1979. Current law requires the Legislature to impose taxes and other

Journal: "I-601 separates those who want to tax and spend from those who want to restrain taxing and spending.... As one of the proponents of I-601 said to us, 'Who, in their right mind, would ever be opposed to such a thing?'"

We couldn't have said it better ourselves. Fifteen other states may be considering I-601 style resolutions. On November 2nd, vote I-601.

For more information, call 1-800-949-6646.

Rebuttal of Statement against

Opponents of I-601 don't think the people are intelligent enough to decide whether future taxes are really needed. They want us to trust politicians who consistently refuse to control spending.

California is in trouble because they limited taxes without limiting spending. I-601 limits spending, forcing government to cut waste and set priorities.

I-601 protects education. Under I-601, state spending would grow by about 8% the first two years. Harmful cuts would be unnecessary.

Voters Pamphlet Statement Prepared by:

LINDA SMITH, State Senator, member of Senate Ways & Means (Budget) Committee; GREG SEIFERT, Vancouver-based independent Insurance Agent; BOB NIX, Farmer, former Teacher and Volunteer Coordinator for the Washington Taxpayer Protection Coalition.

Advisory Committee: BUTCH SMITH, Spokane-area Real Estate Consultant, member of Washington Taxpayer Protection Coalition Steering Committee; JUDY NIX, Farmer, Community Leader and Volunteer Coordinator of the WTPC; LES WADDINGTON, Tri-Cities Businessman, member of WTPC Steering Committee; DAVID CUTBIRTH, Olympia-area Communications Consultant and Media Relations Coordinator for WTPC; DR. ANN DONNELLY, Geologist and Finance Director of WTPC.

charges in a manner that will ensure that estimated tax revenues do not exceed the revenue limit for each fiscal year. The limit may be exceeded only in case of an emergency declared by the Legislature with a two-thirds vote in each house. The budgeting and accounting laws prohibit the governor from allowing the expenditure of funds in excess of actual revenue received. The 1979 initiative also limits the extent to which the Legislature may impose new obligations on local governments without reimbursing them from state funds.

The effect of Initiative Measure 601, if approved into law:

Initiative Measure 601 would replace the current state tax revenue limit with a state expenditure limit calculated for each fiscal year by increasing the previous fiscal year's limit by a fiscal growth factor derived by averaging the sum of inflation and population change for each of the prior three fiscal years. State expenditures are those expenditures made from the state's general fund, excluding expenditures made from federal funds. The expenditure limit would first become effective for the fiscal year beginning July 1, 1995. Fees paid to the state could not be increased beyond the fiscal growth factor without prior Legislature approval. The initiative would establish an emergency reserve fund and would require the Legislature to place in this fund any revenue received in excess of the new expenditure limit. Money could be taken from the fund only by a vote of two-thirds of the

Statement against

I-601 IS NOT THE ANSWER

Washington citizens deserve a strong economy, good paying jobs, a clean environment, safe neighborhoods, quality education, and improved health care. This initiative will NOT help us achieve these goals.

Every citizen should demand that taxes be raised prudently and public money be spent wisely. But this initiative is not the answer to legitimate calls for improved government efficiency and accountability.

CITIZEN NEEDS DON'T RELATE TO ARTIFICIAL FORMULA

I-601 would tie increases in state spending to an artificial formula that has no relationship to the actual needs of our citizens. The needs of those younger than 21 or older than 65 don't increase according to an arbitrary formula. There will be 55,000 new school children in the next two years and double-digit increases in health care costs. Crime on the streets doesn't stop because of some formula in Olympia.

DON'T SLIDE BACKWARD

We've got a state that works. Let's keep it that way. We've got a balanced budget without gimmicks. The voters previously limited state tax revenue to increases in personal income. There are limits on property tax and term limits on legislators. Our state made great strides this year in health care, civil service reform and access to college and job training opportunities. We don't need to make the same mistake California did.

members of each house of the Legislature. Excess emergency funds would be transferred to a new education construction fund. Any other use of this money would require a two-thirds vote of each house of the Legislature and approval by vote of the people.

After July 1, 1995, the Legislature could not take actions to increase state revenue or shift tax burdens except by a two-thirds vote of each house, and only then if the new revenue would not exceed the state expenditure limit for the fiscal year in question.

The Legislature could increase revenues in excess of the expenditure limit but such increases would be effective only with approval by the people at the next general election.

The state expenditure limit could be exceeded upon a declaration of an emergency approved by a two-thirds vote of each house and signed by the governor. The declaration must set forth the nature of the emergency, which could only be natural disasters requiring immediate government action. Additional taxes to meet the emergency could be imposed, but only for the length of the emergency or two years, whichever is shorter.

The Legislature would be prohibited from imposing responsibility for new programs or increased levels of service on any political subdivision of the state, unless the subdivision is fully reimbursed by specific appropriation by the state.

Parts of the initiative would go into effect immediately, and parts on July 1, 1995. Effective immediately, the Legislature would be prohibited from raising taxes, imposing new taxes, or shifting tax burdens without approval of the voters.

MAJORITY RULE PROTECTS EVERYONE

The requirement for two-thirds agreement in the legislature to respond to critical needs could very well put the control of the state's future in the hands of a small group of legislators with very extreme views. Majority rule protects everyone.

Vote NO on I-601.

For more information, call (206) 625-0511.

Rebuttal of Statement for

Under I-601, as few as 17 senators would decide what's best for all Washingtonians. That's great for politicians, but bad for citizens. Voters will be shut out by special interests and their lobbyists.

I-601 applies only to the general fund. 200 other funds, including gas taxes, are not covered. Another opportunity for special interest lobbyists.

I-601's meaningless statistics ignore the real needs of our children and senior citizens.

Don't be fooled. Vote NO!

Voters Pamphlet Statement Prepared by:

DANIEL J. EVANS, former Governor; MARGARET COLONY, President, League of Women Voters of Washington; W. HUNTER SIMPSON, retired Businessman.

Advisory Committee: ANNA H. CHAVELLE, MD, President, Washington State Medical Association; DR. WILLIAM WILEY, Senior Vice President, Battelle Memorial Institute; FATHER WILLIAM J. SULLIVAN, S.J., President, Seattle University; PHYLLIS GUTIERREZ KENNEY, Higher Education and Community Leader; AL LINK, President, Spokane Central Labor Council.



INITIATIVE MEASURE 602

TO THE PEOPLE

Note: The ballot title and explanatory statement were written by the Attorney General as required by law. The complete text of Initiative Measure 602 begins on page 28.

Statement for

INITIATIVE 602 PROTECTS TAXPAYERS AND CONTROLS GOVERNMENT SPENDING

INITIATIVE 602 FIGHTS RAMPANT INEFFICIENCY AND WASTE IN GOVERNMENT

Even before this year's tax increases, state government had nearly \$1 billion more of your tax dollars than ever before. Yet, they still increased spending and burdened Washingtonians with an additional \$1.2 BILLION in new taxes.

I-602 encourages state government to set priorities — funding essential needs, including K-12 and higher education, and public safety first! Inefficient and wasteful uses of your tax dollars — like \$44,000 fish tanks, expensive office buildings, excessive travel, and unnecessary bureaucracy — would meet the chopping-block.

INITIATIVE 602 SAFEGUARDS WASHINGTON'S FUTURE

Reasonable controls that work. I-602 controls how much money the state can collect and then limits spending to that level. Experience shows that limits based on spending alone allow too many loopholes for higher taxes and spending.

Living within taxpayers' means. Our state budget has nearly tripled in the last 12 years... that's faster than hard-working taxpayers can afford. Under I-602, government spending rises only if the people's financial condition improves.

Making government accountable. I-602 requires a 60% legislative vote to increase taxes within the limit. New taxes are limited to two years.

Planning ahead. I-602 establishes a "savings account" to

Official Ballot Title:

Shall state revenue collections and state expenditures be limited by a factor based on personal income, and certain revenue measures repealed?

The law as it now exists:

The state is currently operating under a law (Chapter 43.135 RCW, enacted by initiative in 1979), which limits state tax revenue in each fiscal year to an amount calculated by multiplying the previous year's revenue limit by the average state personal income ratio for the three calendar years immediately preceding the beginning of the fiscal year in question. For instance, the tax revenue limit for fiscal 1994 (which began on July 1, 1993) is the limit for fiscal 1993 multiplied by the average increase in personal income for calendar 1990, 1991, and 1992. The starting point for these calculations was the revenue received in fiscal 1979. Current law requires the Legislature to impose taxes and other

protect vital public services during tough times — avoiding unnecessary tax increases. The cycle of simply taxing and spending more will be broken.

TAKE BACK OUR GOVERNMENT AND SEND POLITICIANS A MESSAGE... VOTE YES ON INITIATIVE 602

Too many elected officials believe government is for the politicians, not the people.

I-602 is a common-sense, reasonable plan to make government serve the public... and gives taxpayers the protection they deserve.

Make government accountable and control taxes, call 1-800-487-1693.

Rebuttal of Statement against

I-602 is a "boon" to Washington taxpayers who are fed up with wasteful spending by bureaucrats and politicians! Alcohol and Tobacco's share of 1993's \$1.2 billion tax increase is less than 17%. Who pays the rest? You do!

That's why 450,000 Washingtonians signed petitions to put I-602 on the ballot!

PUT AN END TO \$44,000 FISH TANKS AND JET-SETTING GOVERNMENT BUREAUCRATS!

Send Politicians a message.

YES ON I-602!

Voters Pamphlet Statement Prepared by:

PEGGY JOHNSON, I-602 Republican Co-Chair; KEN DONOHUE, I-602 Democrat Co-Chair; RANDY TATE, State Representative.

Advisory Committee: MELODY MURPHY, I-602 Independent Co-Chair; CAROLYN LOGUE, State Director, National Federation of Independent Business; MIKE CARRELL, Chair, Teachers for I-602; WYNN CANNON, Chairman, League of Wash. Taxpayers; DON BRUNELL, Pres., Association of Wash. Business.

charges in a manner that will insure that estimated tax revenues do not exceed the revenue limit for each fiscal year. The limit may be exceeded only in case of an emergency declared by the Legislature with a two-thirds vote in each house. The budgeting and accounting laws prohibit the governor from allowing the expenditure of funds in excess of actual revenue received. The 1979 initiative also limits the extent to which the Legislature may impose new obligations on local governments without reimbursing them from state funds.

The effect of Initiative Measure 602, if approved into law:

Initiative Measure 602 would replace the current state tax revenue limit with a new state revenue collection limit. This limit would be calculated for each fiscal year by multiplying the total state personal income for the fiscal year in question by a "limitation factor." The limitation factor would be calculated by dividing the sum of total state revenue collections for the fiscal years 1988 through 1992 by the sum of total state personal income for those same fiscal years. The new limit would take effect with the fiscal year beginning July 1, 1993.

The state would be prohibited from expending funds derived from state revenue collections in excess of the state revenue collection limit for the fiscal year in question. The state treasurer,

except in case of emergency, would be prohibited from issuing any checks or warrants which would result in an expenditure in excess of the revenue collection limit.

A revenue reserve fund would be created to hold any excess funds collected above amounts anticipated and budgeted, or any undesignated and unspent funds in the treasury. The treasurer could transfer money from this fund in years when revenue falls short of the amount anticipated and budgeted by the Legislature. Further revenue collections that exceed the limits of the revenue reserve fund would be paid into a general obligation debt reduction account.

The revenue collection limit could be exceeded upon a declaration of an emergency by the governor and a law approved by a vote of seventy-five percent of each house of the Legislature. No emergency could last longer than twenty-four months. In an emergency, revenue collections could be increased enough to meet the emergency, but no more.

The Legislature would be prohibited from imposing new responsibilities on political subdivisions, or programs previously provided by the state, or increased levels of service in existing programs, except where the Legislature fully reimburses the political subdivision. The Legislature could not meet its reimbursement obligation by authorizing new local revenue collections.

The initiative would repeal all revenue actions by the state to increase revenues over those in effect on December 31, 1992.

The initiative would go into effect immediately, and would place a revenue collection limit on the fiscal year beginning July 1, 1993.

Statement against

I-602 IS NOT THE ANSWER

Washington citizens deserve a strong economy, good paying jobs, a clean environment, safe neighborhoods, quality education, and improved health care. This initiative will NOT help us achieve these goals.

Every citizen should demand that taxes be raised prudently and public money be spent wisely. But this initiative is not the answer to legitimate calls for improved government efficiency and accountability.

INDISCRIMINATE HARM

The blanket repeal of all 1993 tax and fee increases would spread indiscriminate harm across the state. The roll-back of alcohol and tobacco taxes will leave 198,000 Washingtonians without health care and cripple health care reform efforts. Two-thousand university students and 8,000 community and technical college students will lose their place in class, including 5,000 laid-off workers seeking job training.

Many other programs such as criminal justice assistance to local government and public school support would likely be reduced as the legislature rebalances state spending. Those politicians who claim they can find plenty of money for worthwhile programs by eliminating waste are not telling the truth.

LEGISLATIVE GRIDLOCK

The requirement that 75% of the legislature approve spending increases for critical needs would encourage a small number of legislators to demand changes in long-established law in trade for their vote on the budget.

ALCOHOL AND TOBACCO WIN

Passage of I-602 would result in unfair, unrepresentative, gridlocked government. A clear threat to our quality of life, and a boon to alcohol and tobacco companies.

Vote NO on I-602.

For more information, call (206) 625-0511.

Rebuttal of Statement for

Lobbyists wrote I-602. Special interests paid \$250,000 to collect the signatures. Why? Because I-602 cuts their taxes. Under their plan, as few as 13 senators would decide what's best for all Washingtonians.

I-602 also cuts essential services like college and university enrollments, retraining for unemployed workers, and it makes health care reform unworkable.

Send a real message. We won't let alcohol, tobacco and insurance lobbyists control our government.

We won't be fooled. Vote NO!

Voters Pamphlet Statement Prepared by:

DANIEL J. EVANS, former Governor; MARGARET COLONY, President, League of Women Voters of Washington; W. HUNTER SIMPSON, retired Businessman.

Advisory Committee: ANNA H. CHAVELLE, MD, President, Washington State Medical Association; DR. WILLIAM WILEY, Senior Vice President, Battelle Memorial Institute; FATHER WILLIAM J. SULLIVAN, S.J., President, Seattle University; PHYLLIS GUTIERREZ KENNEY, Higher Education and Community Leader; AL LINK, President, Spokane Central Labor Council.



HOUSE JOINT RESOLUTION 4200

PROPOSED CONSTITUTIONAL AMENDMENT

Note: The ballot title and explanatory statement were written by the Attorney General as required by law. The complete text of House Joint Resolution 4200 begins on page 34.

Vote cast by the 1993 Legislature on final passage:

House: Yeas, 67; Nays, 31; Absent or not voting, 0.

Senate: Yeas, 43; Nays, 4; Excused, 2; Absent or not voting, 0.

Statement for

THE HEALING PROCESS

When facing the physical, emotional and mental challenges of an illness, many people find solace, comfort, and improved healing through their faith and beliefs. Hospitalized patients and their families have repeatedly demonstrated their need to confide in someone of their choice who will listen, counsel, and provide comfort in times of distress. Providing for such needs leads to better healthcare outcomes.

CHAPLAIN AS MEMBER OF HEALTH CARE TEAM

Chaplains in public hospitals arrange for spiritual advisors of choice when requested by a patient or family. The chaplain may also provide personal support for the patient, such as locating a lost friend or family member. In emergencies, a hospital chaplain is available immediately, just as a military chaplain is available to soldiers.

Public hospital chaplains are required by professional ethics to respect patients' spiritual preferences, including those who want no spiritual counseling. The role of a hospital chaplain is to respond to patient or family requests with other health professionals to meet the patient's individual needs.

CURRENT LAW

Volunteer community chaplains are in shrinking supply and frequently unavailable when needed. In nearly half the hospitals in Washington, the public hospitals legal ability to hire chaplains to provide patients such essential services

Official Ballot Title:

Shall counties and public hospital districts be permitted to employ chaplains for their hospitals, health care facilities, and hospices?

has been confusing. Although state prisons and mental institutions may hire chaplains, similar authority for public hospitals is unclear.

THE ISSUE

Public hospitals are asking voters for clear approval to hire chaplains. The chaplains would arrange for spiritual advisors when requested by a patient or a patient's family, and be available immediately in an emergency.

For more information, call (206) 281-7211.

Rebuttal of Statement against

House Joint Resolution 4200 will not result in particular religious beliefs being used as a standard for hiring decisions, for this would be illegal under anti-discrimination laws and our Constitution. Further, it is not government-sponsored religion, therefore it is not a violation of separation of church and state. The precedent of hiring chaplains for state institutions has already been set. Why should this be denied to the sick and dying in our public hospitals?

Voters Pamphlet Statement Prepared by:

ROSA FRANKLIN, State Senator; LINDA JOHNSON, State Representative; IRV NEWHOUSE, State Senator.

Advisory Committee: CAROLE OELJEN, Vice President, Washington State Nurse Association; ANNA H. CHAVELLE, M.D., President, Washington State Medical Association; GREG VIGDOR, Executive Director, Association of Washington Public Hospital Districts; LEO GREENAWALT, President, Washington State Hospital Association; PARI GILL, Nominating Chair, Society for Social Work Directors in Health Care.

The law as it now exists:

The state Constitution prohibits the use of any public money or property for religious worship, exercise, or instruction, or for the support of any religious establishment. However, the current Constitution contains an exception permitting the state to employ chaplains for its custodial, correctional, and mental institutions, at the discretion of the legislature. Counties and public hospital districts are not covered by this exception.

Statement against

Don't be misled by good intentions or emotional appeals. Public hospitals, using your tax dollars, will have to make personnel decisions based on religion. How can this be done fairly? It can't.

HJR 4200 is an unwise and dangerous precedent. Washington state citizens have always respected and understood the need to keep religion and government separate. HJR 4200 is the wrong step toward mixing these two institutions.

There is no need for HJR 4200. Any taxpayer-supported medical facility can already hire professional staff to provide emotional support in time of need. HJR 4200 goes far beyond what is necessary or appropriate. Public hospitals will spend public funds—your tax dollars—to select one religion over others. We should not use tax dollars to eliminate the distinction between church and state.

Please keep our history in mind. Remember one reason why people came here was for the right to practice their beliefs free of government dictates. No matter how innocent sounding HJR 4200 is, the fact remains it is government sponsored religion. And once started, where does this stop? Will counties and cities be required to select one religion to support their employees or be on-site for persons injured in car accidents?

There is a better way than HJR 4200. Tell your hospital administrators to make their decisions based on merit and patient needs, not religious preference.

Keep Washington state where it belongs—in the forefront of separation of church and state, not taxpayer-supported pulpits.

The effect of House Joint Resolution 4200, if approved into law:

The effect of approving this constitutional amendment would be to extend to counties and public hospital districts the authority to employ chaplains for their hospital districts, health care facilities, and hospices, at the discretion of the legislature. In effect, the exception now provided for chaplains in certain state institutions would be extended to hospitals and other health care facilities owned and operated by counties or public hospital districts. The legislature would decide whether and how to implement this change.

Rebuttal of Statement for

Using your tax dollars to eliminate the separation between religion and government is a bad idea. Doing so when the "problem" isn't caused by government is even worse.

The proponents claim there aren't enough volunteer chaplains for hospitals. Does that require spending your money making religious-based personnel decisions? The churches should fix this problem, not taxpayers.

Public hospitals already hire professional staff to provide emotional support. HJR 4200 is an unnecessary use of taxpayer's money.

Voters Pamphlet Statement Prepared by:

AL WILLIAMS, State Senator; MIKE HEAVEY, State Representative.

Advisory Committee: REVEREND BRUCE CLEAR; MONICA ZUCKER.



HOUSE JOINT RESOLUTION 4201

PROPOSED CONSTITUTIONAL AMENDMENT

Note: The ballot title and explanatory statement were written by the Attorney General as required by law. The complete text of House Joint Resolution 4201 begins on page 34.

Vote cast by the 1993 Legislature on final passage:

House: Yeas, 97; Nays, 0; Excused, 1; Absent or not voting, 0.

Senate: Yeas, 44; Nays, 1; Excused, 4; Absent or not voting, 0.

Statement for

WHAT ARE "CASES IN EQUITY"

"Cases in equity" include cases in which a court issues an injunction or restraining order to prevent some harm from occurring. Domestic violence cases, in which protective orders may be issued, are important examples of "cases in equity."

COURTS USE EQUITY POWERS TO PROTECT FAMILIES AND CHILDREN

The issuance of protective orders is one of the most effective tools that judges and law enforcement agencies have for protecting families and children from threats of violence. It is especially important that these protective orders be available right when they are needed. Delay can lead to tragedy.

THE WASHINGTON COMMISSION ON TRIAL COURTS HAS RECOMMENDED THIS AMENDMENT

Under the current wording of the state constitution, there is some question as to whether courts other than the Superior Courts may exercise jurisdiction in "cases in equity." Unfortunately, Superior Courts are seriously overcrowded and cases may encounter significant delays. The Washington Commission on Trial Courts, appointed by the State Supreme Court, has recommended that District Courts also hear "cases in equity." The Legislature has agreed with this recommendation and concluded that *both* the District and Superior Courts should have jurisdiction over these cases, particularly when they involve domestic violence.

Official Ballot Title:

Shall the constitutional provision which gives jurisdiction in "cases in equity" to superior courts be amended to include district courts?

DISTRICT COURTS SHOULD HEAR EQUITY CASES

This constitutional amendment will clarify that District Courts, as well as Superior Courts, may hear "cases in equity." It will promote the swift issuance of protective orders. The amendment will allow greater flexibility in dealing with court congestion, will promote efficiency in the courts, and will help insure that our domestic violence laws do their job. This amendment deserves your support.

Rebuttal of Statement against

Sponsored by non-attorneys and attorneys, HJR 4201 will make our courts more available to citizens needing protection. District courts are accessible to the public because they are located not only in the county seat, but also in outlying areas — 66 locations statewide. And, while many have heavy caseloads, district courts are generally less congested than superior courts and can more quickly handle requests for protective orders arising from family violence and harassment situations.

Voters Pamphlet Statement Prepared by:

ADAM SMITH, State Senator, Chair, Senate Law and Justice Committee; CURT LUDWIG, State Representative, Vice Chair, House Judiciary Committee.

Advisory Committee: MARGARET COLONY, President, League of Women Voters of Washington; HONORABLE PAUL D. HANSON, President of Superior Court Judges' Association, Snohomish County Superior Court; HONORABLE THOMAS C. WARREN, President, District and Municipal Court Judges' Association, Chelan County District Court; STEPHEN DeFOREST, President of the Washington State Bar Association; BILL GATES, Attorney.

The law as it now exists:

In the English legal system inherited by the United States, there were two separate court systems: courts of law and courts in equity. These two types of courts followed somewhat different procedures and exercised different types of powers. Certain powers were held only by courts in equity, such as the power to issue an injunction or the power to rescind a contract. The Washington state Constitution did not establish separate courts of law and courts in equity, and in the United States the distinction between legal powers and equitable powers has grown less and less clear. However, the state Constitution currently provides that "the superior courts will have jurisdiction in . . . all 'cases in equity,'" subject to review on appeal. The legislature has created a system of district courts to handle smaller and simpler cases, but the Constitution currently does not provide that district courts may exercise powers historically reserved to courts in equity.

Statement against

THIS AMENDMENT WILL NOT DECONGEST OR MAKE THE DISTRICT COURTS, OR THE SUPERIOR COURTS MORE EFFICIENT

HJR 4201, will not improve or decongest our antiquated courts! This proposed Constitutional Amendment was sponsored by lawyer-legislators and is self-serving! Vote NO on this!

THE CONSTITUTION SHOULD NOT BE USED FOR A BAND-AID CURE

The Constitution, Article IV, section 6, *should not* be amended to allow cases in equity in District Courts. This will shift the overburden of the Superior Courts to the overburdened District Courts. Our District Courts are congested, inefficient, and not serving the public expediently now, why burden them more?

THE SPONSORS OF THIS AMENDMENT HAVE HAD TWO YEARS, OR MORE, TO CORRECT THE INEFFICIENCIES AND CONGESTION IN BOTH THE SUPERIOR AND DISTRICT COURTS

Two years ago these same lawyer/legislators tried to shift the burden of the Superior Courts to the District Courts by removing equity from the Superior Court, and it failed. This time they think by adding equity to the District Court it will reduce the congestion. It won't! It will make both courts more congested, and thereby justify their *adding* of more courts! Both courts are overcrowded now! We suggested then to have equity in both courts and to work with them for

The effect of House Joint Resolution 4201, if approved into law:

The effect of approving this measure would be to amend the Constitution to provide that district courts may exercise equity powers to the same extent as superior courts. The proposed amendment would allow either a superior court or a district court, for instance, to issue an injunction or to specifically require a contract to be performed. The amendment would not change the current system allowing appeals from judgments entered by superior courts or district courts.

complete reform of the judiciary and the courts. They did neither! Now the case overload in District Court today is causing more court congestion, and inefficiency than we had two years ago. They certainly don't need more burden from the Superior Court!

COURT REFORM IS NEEDED NOW, NOT MORE COURTS, OR MONEY, OR AMENDING OF THE CONSTITUTION

For most efficient use of the courts remove family law and child custody to family counseling and have all Superior Courts open from 8AM to 5PM, five days a week.

HJR 4201 is a bad idea. Vote No!

For more information call (206) 938-0234.

Rebuttal of Statement for

Yes, we need judicial reform but putting equity in our overloaded District Court will not make it more efficient or less congested!

Our overburdened and inefficient courts: the legislature should study the proposal of removing Family-law (divorce, child custody etc.) from adversarial proceedings. This would eliminate more than half of the Superior Courts overload, hence no need to transfer cases to the overloaded District Court (or no need for more courts).

Vote No!

Voters Pamphlet Statement Prepared by:

GENE GOOSMAN, Founder of Equal Justice For All.



COMPLETE TEXT OF Initiative Measure 593

AN ACT Relating to persistent offenders; reenacting and amending RCW 9.94A.120 and 9.94A.030; creating new sections; and prescribing penalties.

BE IT ENACTED BY THE PEOPLE OF THE STATE OF WASHINGTON:

NEW SECTION. Sec. 1. FINDINGS AND INTENT. (1) The people of the state of Washington find and declare that:

(a) Community protection from persistent offenders is a priority for any civilized society.

(b) Nearly fifty percent of the criminals convicted in Washington state have active prior criminal histories.

(c) Punishments for criminal offenses should be proportionate to both the seriousness of the crime and the prior criminal history.

(d) The public has the right and the responsibility to determine when to impose a life sentence.

(2) By sentencing three-time, most serious offenders to prison for life without the possibility of parole, the people intend to:

(a) Improve public safety by placing the most dangerous criminals in prison.

(b) Reduce the number of serious, repeat offenders by tougher sentencing.

(c) Set proper and simplified sentencing practices that both the victims and persistent offenders can understand.

(d) Restore public trust in our criminal justice system by directly involving the people in the process.

Sec. 2. RCW 9.94A.120 and 1992 c 145 s 7, 1992 c 75 s 2, and 1992 c 45 s 5 are each reenacted and amended to read as follows:

ENFORCEMENT OF MANDATORY MINIMUM SENTENCES. When a person is convicted of a felony, the court shall impose punishment as provided in this section.

(1) Except as authorized in subsections (2), (4), (5), and (7) of this section, the court shall impose a sentence within the sentence range for the offense.

(2) The court may impose a sentence outside the standard sentence range for that offense if it finds, considering the purpose of this chapter, that there are substantial and compelling reasons justifying an exceptional sentence.

(3) Whenever a sentence outside the standard range is imposed, the court shall set forth the reasons for its decision in written findings of fact and conclusions of law. A sentence outside the standard range shall be a determinate sentence.

(4) A persistent offender shall be sentenced to a term of

total confinement for life without the possibility of parole or, when authorized by RCW 10.95.030 for the crime of aggravated murder in the first degree, sentenced to death, notwithstanding the maximum sentence under any other law. An offender convicted of the crime of murder in the first degree shall be sentenced to a term of total confinement not less than twenty years. An offender convicted of the crime of assault in the first degree or assault of a child in the first degree where the offender used force or means likely to result in death or intended to kill the victim shall be sentenced to a term of total confinement not less than five years. An offender convicted of the crime of rape in the first degree shall be sentenced to a term of total confinement not less than five years~~((and shall not be eligible for furlough, work release or other authorized leave of absence from the correctional facility during such minimum five-year term except for the purpose of commitment to an inpatient treatment facility))~~. The foregoing minimum terms of total confinement are mandatory and shall not be varied or modified as provided in subsection (2) of this section. In addition, all offenders subject to the provisions of this subsection shall not be eligible for community custody, earned early release time, furlough, home detention, partial confinement, work crew, work release, or any other form of early release as defined under RCW 9.94A.150 (1), (2), (3), (5), (7), or (8), or any other form of authorized leave of absence from the correctional facility while not in the direct custody of a corrections officer or officers during such minimum terms of total confinement except in the case of an offender in need of emergency medical treatment or for the purpose of commitment to an inpatient treatment facility in the case of an offender convicted of the crime of rape in the first degree.

(5) In sentencing a first-time offender the court may waive the imposition of a sentence within the sentence range and impose a sentence which may include up to ninety days of confinement in a facility operated or utilized under contract by the county and a requirement that the offender refrain from committing new offenses. The sentence may also include up to two years of community supervision, which, in addition to crime-related prohibitions, may include requirements that the offender perform any one or more of the following:

(a) Devote time to a specific employment or occupation;

(b) Undergo available outpatient treatment for up to two years, or inpatient treatment not to exceed the standard range of confinement for that offense;

(c) Pursue a prescribed, secular course of study or vocational training;

(d) Remain within prescribed geographical boundaries and notify the court or the community corrections officer prior to any change in the offender's address or employment;

(e) Report as directed to the court and a community corrections officer; or

(f) Pay all court-ordered legal financial obligations as



COMPLETE TEXT OF Initiative Measure 593 (cont.)

provided in RCW 9.94A.030 and/or perform community service work.

(6) If a sentence range has not been established for the defendant's crime, the court shall impose a determinate sentence which may include not more than one year of confinement, community service work, a term of community supervision not to exceed one year, and/or other legal financial obligations. The court may impose a sentence which provides more than one year of confinement if the court finds, considering the purpose of this chapter, that there are substantial and compelling reasons justifying an exceptional sentence.

(7)(a)(i) When an offender is convicted of a sex offense other than a violation of RCW 9A.44.050 or a sex offense that is also a serious violent offense and has no prior convictions for a sex offense or any other felony sex offenses in this or any other state, the sentencing court, on its own motion or the motion of the state or the defendant, may order an examination to determine whether the defendant is amenable to treatment.

The report of the examination shall include at a minimum the following: The defendant's version of the facts and the official version of the facts, the defendant's offense history, an assessment of problems in addition to alleged deviant behaviors, the offender's social and employment situation, and other evaluation measures used. The report shall set forth the sources of the evaluator's information.

The examiner shall assess and report regarding the defendant's amenability to treatment and relative risk to the community. A proposed treatment plan shall be provided and shall include, at a minimum:

(A) Frequency and type of contact between offender and therapist;

(B) Specific issues to be addressed in the treatment and description of planned treatment modalities;

(C) Monitoring plans, including any requirements regarding living conditions, lifestyle requirements, and monitoring by family members and others;

(D) Anticipated length of treatment; and

(E) Recommended crime-related prohibitions.

The court on its own motion may order, or on a motion by the state shall order, a second examination regarding the offender's amenability to treatment. The evaluator shall be selected by the party making the motion. The defendant shall pay the cost of any second examination ordered unless the court finds the defendant to be indigent in which case the state shall pay the cost.

(ii) After receipt of the reports, the court shall consider whether the offender and the community will benefit from use of this special sexual offender sentencing alternative

and consider the victim's opinion whether the offender should receive a treatment disposition under this subsection. If the court determines that this special sex offender sentencing alternative is appropriate, the court shall then impose a sentence within the sentence range. If this sentence is less than eight years of confinement, the court may suspend the execution of the sentence and impose the following conditions of suspension:

(A) The court shall place the defendant on community supervision for the length of the suspended sentence or three years, whichever is greater; and

(B) The court shall order treatment for any period up to three years in duration. The court in its discretion shall order outpatient sex offender treatment or inpatient sex offender treatment, if available. A community mental health center may not be used for such treatment unless it has an appropriate program designed for sex offender treatment. The offender shall not change sex offender treatment providers or treatment conditions without first notifying the prosecutor, the community corrections officer, and the court, and shall not change providers without court approval after a hearing if the prosecutor or community corrections officer object to the change. In addition, as conditions of the suspended sentence, the court may impose other sentence conditions including up to six months of confinement, not to exceed the sentence range of confinement for that offense, crime-related prohibitions, and requirements that the offender perform any one or more of the following:

(I) Devote time to a specific employment or occupation;

(II) Remain within prescribed geographical boundaries and notify the court or the community corrections officer prior to any change in the offender's address or employment;

(III) Report as directed to the court and a community corrections officer;

(IV) Pay all court-ordered legal financial obligations as provided in RCW 9.94A.030, perform community service work, or any combination thereof; or

(V) Make recoupment to the victim for the cost of any counseling required as a result of the offender's crime.

(iii) The sex offender therapist shall submit quarterly reports on the defendant's progress in treatment to the court and the parties. The report shall reference the treatment plan and include at a minimum the following: Dates of attendance, defendant's compliance with requirements, treatment activities, the defendant's relative progress in treatment, and any other material as specified by the court at sentencing.

(iv) At the time of sentencing, the court shall set a treatment termination hearing for three months prior to the anticipated date for completion of treatment. Prior to the treatment termination hearing, the treatment professional and community corrections officer shall submit written reports to the court and parties regarding the defendant's compliance with treatment and monitoring requirements,



COMPLETE TEXT OF Initiative Measure 593 (cont.)

and recommendations regarding termination from treatment, including proposed community supervision conditions. Either party may request and the court may order another evaluation regarding the advisability of termination from treatment. The defendant shall pay the cost of any additional evaluation ordered unless the court finds the defendant to be indigent in which case the state shall pay the cost. At the treatment termination hearing the court may: (A) Modify conditions of community supervision, and either (B) terminate treatment, or (C) extend treatment for up to the remaining period of community supervision.

(v) The court may revoke the suspended sentence at any time during the period of community supervision and order execution of the sentence if: (A) The defendant violates the conditions of the suspended sentence, or (B) the court finds that the defendant is failing to make satisfactory progress in treatment. All confinement time served during the period of community supervision shall be credited to the offender if the suspended sentence is revoked.

(vi) Except as provided in (a)(vii) of this subsection, after July 1, 1991, examinations and treatment ordered pursuant to this subsection shall only be conducted by sex offender treatment providers certified by the department of health pursuant to chapter 18.155 RCW.

(vii) A sex offender therapist who examines or treats a sex offender pursuant to this subsection (7) does not have to be certified by the department of health pursuant to chapter 18.155 RCW if the court finds that: (A) The offender has already moved to another state or plans to move to another state for reasons other than circumventing the certification requirements; (B) no certified providers are available for treatment within a reasonable geographical distance of the offender's home; and (C) the evaluation and treatment plan comply with this subsection (7) and the rules adopted by the department of health.

For purposes of this subsection, "victim" means any person who has sustained emotional, psychological, physical, or financial injury to person or property as a result of the crime charged. "Victim" also means a parent or guardian of a victim who is a minor child unless the parent or guardian is the perpetrator of the offense.

(b) When an offender is convicted of any felony sex offense committed before July 1, 1987, and is sentenced to a term of confinement of more than one year but less than six years, the sentencing court may, on its own motion or on the motion of the offender or the state, order the offender committed for up to thirty days to the custody of the secretary of social and health services for evaluation and report to the court on the offender's amenability to treatment at these facilities. If the secretary of social and health

services cannot begin the evaluation within thirty days of the court's order of commitment, the offender shall be transferred to the state for confinement pending an opportunity to be evaluated at the appropriate facility. The court shall review the reports and may order that the term of confinement imposed be served in the sexual offender treatment program at the location determined by the secretary of social and health services or the secretary's designee, only if the report indicates that the offender is amenable to the treatment program provided at these facilities. The offender shall be transferred to the state pending placement in the treatment program. Any offender who has escaped from the treatment program shall be referred back to the sentencing court.

If the offender does not comply with the conditions of the treatment program, the secretary of social and health services may refer the matter to the sentencing court. The sentencing court shall commit the offender to the department of corrections to serve the balance of the term of confinement.

If the offender successfully completes the treatment program before the expiration of the term of confinement, the court may convert the balance of confinement to community supervision and may place conditions on the offender including crime-related prohibitions and requirements that the offender perform any one or more of the following:

- (i) Devote time to a specific employment or occupation;
- (ii) Remain within prescribed geographical boundaries and notify the court or the community corrections officer prior to any change in the offender's address or employment;
- (iii) Report as directed to the court and a community corrections officer;
- (iv) Undergo available outpatient treatment.

If the offender violates any of the terms of community supervision, the court may order the offender to serve out the balance of the community supervision term in confinement in the custody of the department of corrections.

After June 30, 1993, this subsection (b) shall cease to have effect.

(c) When an offender commits any felony sex offense on or after July 1, 1987, and is sentenced to a term of confinement of more than one year but less than six years, the sentencing court may, on its own motion or on the motion of the offender or the state, request the department of corrections to evaluate whether the offender is amenable to treatment and the department may place the offender in a treatment program within a correctional facility operated by the department.

Except for an offender who has been convicted of a violation of RCW 9A.44.040 or 9A.44.050, if the offender completes the treatment program before the expiration of his or her term of confinement, the department of corrections may request the court to convert the balance of confinement to community supervision and to place con-



COMPLETE TEXT OF Initiative Measure 593 (cont.)

ditions on the offender including crime-related prohibitions and requirements that the offender perform any one or more of the following:

- (i) Devote time to a specific employment or occupation;
- (ii) Remain within prescribed geographical boundaries and notify the court or the community corrections officer prior to any change in the offender's address or employment;
- (iii) Report as directed to the court and a community corrections officer;
- (iv) Undergo available outpatient treatment.

If the offender violates any of the terms of his or her community supervision, the court may order the offender to serve out the balance of his or her community supervision term in confinement in the custody of the department of corrections.

Nothing in (c) of this subsection shall confer eligibility for such programs for offenders convicted and sentenced for a sex offense committed prior to July 1, 1987. This subsection (c) does not apply to any crime committed after July 1, 1990.

(d) Offenders convicted and sentenced for a sex offense committed prior to July 1, 1987, may, subject to available funds, request an evaluation by the department of corrections to determine whether they are amenable to treatment. If the offender is determined to be amenable to treatment, the offender may request placement in a treatment program within a correctional facility operated by the department. Placement in such treatment program is subject to available funds.

(8)(a) When a court sentences a person to a term of total confinement to the custody of the department of corrections for an offense categorized as a sex offense or a serious violent offense committed after July 1, 1988, but before July 1, 1990, assault in the second degree, assault of a child in the second degree, any crime against a person where it is determined in accordance with RCW 9.94A.125 that the defendant or an accomplice was armed with a deadly weapon at the time of commission, or any felony offense under chapter 69.50 or 69.52 RCW, committed on or after July 1, 1988, the court shall in addition to the other terms of the sentence, sentence the offender to a one-year term of community placement beginning either upon completion of the term of confinement or at such time as the offender is transferred to community custody in lieu of earned early release in accordance with RCW 9.94A.150 (1) and (2). When the court sentences an offender under this subsection to the statutory maximum period of confinement then the community placement portion of the sentence shall consist entirely of such community custody to which the offender

may become eligible, in accordance with RCW 9.94A.150 (1) and (2). Any period of community custody actually served shall be credited against the community placement portion of the sentence.

(b) When a court sentences a person to a term of total confinement to the custody of the department of corrections for an offense categorized as a sex offense or serious violent offense committed on or after July 1, 1990, the court shall in addition to other terms of the sentence, sentence the offender to community placement for two years or up to the period of earned early release awarded pursuant to RCW 9.94A.150 (1) and (2), whichever is longer. The community placement shall begin either upon completion of the term of confinement or at such time as the offender is transferred to community custody in lieu of earned early release in accordance with RCW 9.94A.150 (1) and (2). When the court sentences an offender under this subsection to the statutory maximum period of confinement then the community placement portion of the sentence shall consist entirely of the community custody to which the offender may become eligible, in accordance with RCW 9.94A.150 (1) and (2). Any period of community custody actually served shall be credited against the community placement portion of the sentence. Unless a condition is waived by the court, the terms of community placement for offenders sentenced pursuant to this section shall include the following conditions:

- (i) The offender shall report to and be available for contact with the assigned community corrections officer as directed;
- (ii) The offender shall work at department of corrections-approved education, employment, and/or community service;
- (iii) The offender shall not consume controlled substances except pursuant to lawfully issued prescriptions;
- (iv) An offender in community custody shall not unlawfully possess controlled substances;
- (v) The offender shall pay supervision fees as determined by the department of corrections; and
- (vi) The residence location and living arrangements are subject to the prior approval of the department of corrections during the period of community placement.

(c) The court may also order any of the following special conditions:

- (i) The offender shall remain within, or outside of, a specified geographical boundary;
- (ii) The offender shall not have direct or indirect contact with the victim of the crime or a specified class of individuals;
- (iii) The offender shall participate in crime-related treatment or counseling services;
- (iv) The offender shall not consume alcohol; or
- (v) The offender shall comply with any crime-related prohibitions.

(d) Prior to transfer to, or during, community placement, any conditions of community placement may be removed or modified so as not to be more restrictive by the sentencing



COMPLETE TEXT OF Initiative Measure 593 (cont.)

court, upon recommendation of the department of corrections.

(9) If the court imposes a sentence requiring confinement of thirty days or less, the court may, in its discretion, specify that the sentence be served on consecutive or intermittent days. A sentence requiring more than thirty days of confinement shall be served on consecutive days. Local jail administrators may schedule court-ordered intermittent sentences as space permits.

(10) If a sentence imposed includes payment of a legal financial obligation, the sentence shall specify the total amount of the legal financial obligation owed, and shall require the offender to pay a specified monthly sum toward that legal financial obligation. Restitution to victims shall be paid prior to any other payments of monetary obligations. Any legal financial obligation that is imposed by the court may be collected by the department, which shall deliver the amount paid to the county clerk for credit. The offender's compliance with payment of legal financial obligations shall be supervised by the department. All monetary payments ordered shall be paid no later than ten years after the last date of release from confinement pursuant to a felony conviction or the date the sentence was entered. Independent of the department, the party or entity to whom the legal financial obligation is owed shall have the authority to utilize any other remedies available to the party or entity to collect the legal financial obligation. Nothing in this section makes the department, the state, or any of its employees, agents, or other persons acting on their behalf liable under any circumstances for the payment of these legal financial obligations. If an order includes restitution as one of the monetary assessments, the county clerk shall make disbursements to victims named in the order.

(11) Except as provided under RCW 9.94A.140(1) and 9.94A.142(1), a court may not impose a sentence providing for a term of confinement or community supervision or community placement which exceeds the statutory maximum for the crime as provided in chapter 9A.20 RCW.

(12) All offenders sentenced to terms involving community supervision, community service, community placement, or legal financial obligation shall be under the supervision of the secretary of the department of corrections or such person as the secretary may designate and shall follow explicitly the instructions of the secretary including reporting as directed to a community corrections officer, remaining within prescribed geographical boundaries, notifying the community corrections officer of any change in the offender's address or employment, and paying the supervision fee assessment.

(13) All offenders sentenced to terms involving community

supervision, community service, or community placement under the supervision of the department of corrections shall not own, use, or possess firearms or ammunition. Offenders who own, use, or are found to be in actual or constructive possession of firearms or ammunition shall be subject to the appropriate violation process and sanctions. "Constructive possession" as used in this subsection means the power and intent to control the firearm or ammunition. "Firearm" as used in this subsection means a weapon or device from which a projectile may be fired by an explosive such as gunpowder.

(14) The sentencing court shall give the offender credit for all confinement time served before the sentencing if that confinement was solely in regard to the offense for which the offender is being sentenced.

(15) A departure from the standards in RCW 9.94A.400 (1) and (2) governing whether sentences are to be served consecutively or concurrently is an exceptional sentence subject to the limitations in subsections (2) and (3) of this section, and may be appealed by the defendant or the state as set forth in RCW 9.94A.210 (2) through (6).

(16) The court shall order restitution whenever the offender is convicted of a felony that results in injury to any person or damage to or loss of property, whether the offender is sentenced to confinement or placed under community supervision, unless extraordinary circumstances exist that make restitution inappropriate in the court's judgment. The court shall set forth the extraordinary circumstances in the record if it does not order restitution.

(17) As a part of any sentence, the court may impose and enforce an order that relates directly to the circumstances of the crime for which the offender has been convicted, prohibiting the offender from having any contact with other specified individuals or a specific class of individuals for a period not to exceed the maximum allowable sentence for the crime, regardless of the expiration of the offender's term of community supervision or community placement.

(18) In any sentence of partial confinement, the court may require the defendant to serve the partial confinement in work release, in a program of home detention, on work crew, or in a combined program of work crew and home detention.

(19) All court-ordered legal financial obligations collected by the department and remitted to the county clerk shall be credited and paid where restitution is ordered. Restitution shall be paid prior to any other payments of monetary obligations.

Sec. 3. RCW 9.94A.030 and 1992 c 145 s 6 and 1992 c 75 s 1 are each reenacted and amended to read as follows:

DEFINITIONS. Unless the context clearly requires otherwise, the definitions in this section apply throughout this chapter.

(1) "Collect," or any derivative thereof, "collect and remit," or "collect and deliver," when used with reference to the



COMPLETE TEXT OF Initiative Measure 593 (cont.)

department of corrections, means that the department is responsible for monitoring and enforcing the offender's sentence with regard to the legal financial obligation, receiving payment thereof from the offender, and, consistent with current law, delivering daily the entire payment to the superior court clerk without depositing it in a departmental account.

(2) "Commission" means the sentencing guidelines commission.

(3) "Community corrections officer" means an employee of the department who is responsible for carrying out specific duties in supervision of sentenced offenders and monitoring of sentence conditions.

(4) "Community custody" means that portion of an inmate's sentence of confinement in lieu of earned early release time served in the community subject to controls placed on the inmate's movement and activities by the department of corrections.

(5) "Community placement" means that period during which the offender is subject to the conditions of community custody and/or postrelease supervision, which begins either upon completion of the term of confinement (postrelease supervision) or at such time as the offender is transferred to community custody in lieu of earned early release. Community placement may consist of entirely community custody, entirely postrelease supervision, or a combination of the two.

(6) "Community service" means compulsory service, without compensation, performed for the benefit of the community by the offender.

(7) "Community supervision" means a period of time during which a convicted offender is subject to crime-related prohibitions and other sentence conditions imposed by a court pursuant to this chapter or RCW 46.61.524. For first-time offenders, the supervision may include crime-related prohibitions and other conditions imposed pursuant to RCW 9.94A.120(5). For purposes of the interstate compact for out-of-state supervision of parolees and probationers, RCW 9.95.270, community supervision is the functional equivalent of probation and should be considered the same as probation by other states.

(8) "Confinement" means total or partial confinement as defined in this section.

(9) "Conviction" means an adjudication of guilt pursuant to Titles 10 or 13 RCW and includes a verdict of guilty, a finding of guilty, and acceptance of a plea of guilty.

(10) "Court-ordered legal financial obligation" means a sum of money that is ordered by a superior court of the state of Washington for legal financial obligations which may include restitution to the victim, statutorily imposed crime

victims' compensation fees as assessed pursuant to RCW 7.68.035, court costs, county or interlocal drug funds, court-appointed attorneys' fees, and costs of defense, fines, and any other financial obligation that is assessed to the offender as a result of a felony conviction.

(11) "Crime-related prohibition" means an order of a court prohibiting conduct that directly relates to the circumstances of the crime for which the offender has been convicted, and shall not be construed to mean orders directing an offender affirmatively to participate in rehabilitative programs or to otherwise perform affirmative conduct.

(12)(a) "Criminal history" means the list of a defendant's prior convictions, whether in this state, in federal court, or elsewhere. The history shall include, where known, for each conviction (i) whether the defendant has been placed on probation and the length and terms thereof; and (ii) whether the defendant has been incarcerated and the length of incarceration.

(b) "Criminal history" shall always include juvenile convictions for sex offenses and shall also include a defendant's other prior convictions in juvenile court if: (i) The conviction was for an offense which is a felony or a serious traffic offense and is criminal history as defined in RCW 13.40.020(6)(a); (ii) the defendant was fifteen years of age or older at the time the offense was committed; and (iii) with respect to prior juvenile class B and C felonies or serious traffic offenses, the defendant was less than twenty-three years of age at the time the offense for which he or she is being sentenced was committed.

(13) "Department" means the department of corrections.

(14) "Determinate sentence" means a sentence that states with exactitude the number of actual years, months, or days of total confinement, of partial confinement, of community supervision, the number of actual hours or days of community service work, or dollars or terms of a legal financial obligation. The fact that an offender through "earned early release" can reduce the actual period of confinement shall not affect the classification of the sentence as a determinate sentence.

(15) "Disposable earnings" means that part of the earnings of an individual remaining after the deduction from those earnings of any amount required by law to be withheld. For the purposes of this definition, "earnings" means compensation paid or payable for personal services, whether denominated as wages, salary, commission, bonuses, or otherwise, and, notwithstanding any other provision of law making the payments exempt from garnishment, attachment, or other process to satisfy a court-ordered legal financial obligation, specifically includes periodic payments pursuant to pension or retirement programs, or insurance policies of any type, but does not include payments made under Title 50 RCW, except as provided in RCW 50.40.020 and 50.40.050, or Title 74 RCW.

(16) "Drug offense" means:

(a) Any felony violation of chapter 69.50 RCW except



COMPLETE TEXT OF Initiative Measure 593 (cont.)

possession of a controlled substance (RCW 69.50.401(d)) or forged prescription for a controlled substance (RCW 69.50.403);

(b) Any offense defined as a felony under federal law that relates to the possession, manufacture, distribution, or transportation of a controlled substance; or

(c) Any out-of-state conviction for an offense that under the laws of this state would be a felony classified as a drug offense under (a) of this subsection.

(17) "Escape" means:

(a) Escape in the first degree (RCW 9A.76.110), escape in the second degree (RCW 9A.76.120), willful failure to return from furlough (RCW 72.66.060), willful failure to return from work release (RCW 72.65.070), or willful failure to be available for supervision by the department while in community custody (RCW 72.09.310); or

(b) Any federal or out-of-state conviction for an offense that under the laws of this state would be a felony classified as an escape under (a) of this subsection.

(18) "Felony traffic offense" means:

(a) Vehicular homicide (RCW 46.61.520), vehicular assault (RCW 46.61.522), eluding a police officer (RCW 46.61.024), or felony hit-and-run injury-accident (RCW 46.52.020(4)); or

(b) Any federal or out-of-state conviction for an offense that under the laws of this state would be a felony classified as a felony traffic offense under (a) of this subsection.

(19) "Fines" means the requirement that the offender pay a specific sum of money over a specific period of time to the court.

(20)(a) "First-time offender" means any person who is convicted of a felony (i) not classified as a violent offense or a sex offense under this chapter, or (ii) that is not the manufacture, delivery, or possession with intent to manufacture or deliver a controlled substance classified in schedule I or II that is a narcotic drug or the selling for profit ~~((off))~~ of any controlled substance or counterfeit substance classified in schedule I, RCW 69.50.204, except leaves and flowering tops of marihuana, and except as provided in (b) of this subsection, who previously has never been convicted of a felony in this state, federal court, or another state, and who has never participated in a program of deferred prosecution for a felony offense.

(b) For purposes of (a) of this subsection, a juvenile adjudication for an offense committed before the age of fifteen years is not a previous felony conviction except for adjudications of sex offenses.

(21) "Most serious offense" means any of the following felonies or a felony attempt to commit any of the following

felonies, as now existing or hereafter amended:

(a) Any felony defined under any law as a class A felony or criminal solicitation of or criminal conspiracy to commit a class A felony;

(b) Assault in the second degree;

(c) Assault of a child in the second degree;

(d) Child molestation in the second degree;

(e) Controlled substance homicide;

(f) Extortion in the first degree;

(g) Incest when committed against a child under age fourteen;

(h) Indecent liberties;

(i) Kidnapping in the second degree;

(j) Leading organized crime;

(k) Manslaughter in the first degree;

(l) Manslaughter in the second degree;

(m) Promoting prostitution in the first degree;

(n) Rape in the third degree;

(o) Robbery in the second degree;

(p) Sexual exploitation;

(q) Vehicular assault;

(r) Vehicular homicide, when proximately caused by the driving of any vehicle by any person while under the influence of intoxicating liquor or any drug as defined by RCW 46.61.502, or by the operation of any vehicle in a reckless manner;

(s) Any other class B felony offense with a finding of sexual motivation, as "sexual motivation" is defined under this section;

(t) Any other felony with a deadly weapon verdict under RCW 9.94A.125;

(u) Any felony offense in effect at any time prior to the effective date of this section, that is comparable to a most serious offense under this subsection, or any federal or out-of-state conviction for an offense that under the laws of this state would be a felony classified as a most serious offense under this subsection.

(22) "Nonviolent offense" means an offense which is not a violent offense.

~~((22)))~~ (23) "Offender" means a person who has committed a felony established by state law and is eighteen years of age or older or is less than eighteen years of age but whose case has been transferred by the appropriate juvenile court to a criminal court pursuant to RCW 13.40.110. Throughout this chapter, the terms "offender" and "defendant" are used interchangeably.

~~((23)))~~ (24) "Partial confinement" means confinement for no more than one year in a facility or institution operated or utilized under contract by the state or any other unit of government, or, if home detention or work crew has been ordered by the court, in an approved residence, for a substantial portion of each day with the balance of the day spent in the community. Partial confinement includes work release, home detention, work crew, and a combination of work crew and home detention as defined in this section.



COMPLETE TEXT OF Initiative Measure 593 (cont.)

~~((24))~~ (25) "Persistent offender" is an offender who:
(a) Has been convicted in this state of any felony considered a most serious offense; and

(b) Has, before the commission of the offense under (a) of this subsection, been convicted as an offender on at least two separate occasions, whether in this state or elsewhere, of felonies that under the laws of this state would be considered most serious offenses and would be included in the offender score under RCW 9.94A.360; provided that of the two or more previous convictions, at least one conviction must have occurred before the commission of any of the other most serious offenses for which the offender was previously convicted.

(26) "Postrelease supervision" is that portion of an offender's community placement that is not community custody.

~~((25))~~ (27) "Restitution" means the requirement that the offender pay a specific sum of money over a specific period of time to the court as payment of damages. The sum may include both public and private costs. The imposition of a restitution order does not preclude civil redress.

~~((26))~~ (28) "Serious traffic offense" means:

(a) Driving while under the influence of intoxicating liquor or any drug (RCW 46.61.502), actual physical control while under the influence of intoxicating liquor or any drug (RCW 46.61.504), reckless driving (RCW 46.61.500), or hit-and-run an attended vehicle (RCW 46.52.020(5)); or

(b) Any federal, out-of-state, county, or municipal conviction for an offense that under the laws of this state would be classified as a serious traffic offense under (a) of this subsection.

~~((27))~~ (29) "Serious violent offense" is a subcategory of violent offense and means:

(a) Murder in the first degree, homicide by abuse, murder in the second degree, assault in the first degree, kidnapping in the first degree, or rape in the first degree, assault of a child in the first degree, or an attempt, criminal solicitation, or criminal conspiracy to commit one of these felonies; or

(b) Any federal or out-of-state conviction for an offense that under the laws of this state would be a felony classified as a serious violent offense under (a) of this subsection.

~~((28))~~ (30) "Sentence range" means the sentencing court's discretionary range in imposing a nonappealable sentence.

~~((29))~~ (31) "Sex offense" means:

(a) A felony that is a violation of chapter 9A.44 RCW or RCW 9A.64.020 or 9.68A.090 or that is, under chapter 9A.28 RCW, a criminal attempt, criminal solicitation, or criminal conspiracy to commit such crimes;

(b) A felony with a finding of sexual motivation under

RCW 9.94A.127; or

(c) Any federal or out-of-state conviction for an offense that under the laws of this state would be a felony classified as a sex offense under (a) of this subsection.

~~((30))~~ (32) "Sexual motivation" means that one of the purposes for which the defendant committed the crime was for the purpose of his or her sexual gratification.

~~((31))~~ (33) "Total confinement" means confinement inside the physical boundaries of a facility or institution operated or utilized under contract by the state or any other unit of government for twenty-four hours a day, or pursuant to RCW 72.64.050 and 72.64.060.

~~((32))~~ (34) "Victim" means any person who has sustained emotional, psychological, physical, or financial injury to person or property as a direct result of the crime charged.

~~((33))~~ (35) "Violent offense" means:

(a) Any of the following felonies, as now existing or hereafter amended: Any felony defined under any law as a class A felony or an attempt to commit a class A felony, criminal solicitation of or criminal conspiracy to commit a class A felony, manslaughter in the first degree, manslaughter in the second degree, indecent liberties if committed by forcible compulsion, kidnapping in the second degree, arson in the second degree, assault in the second degree, assault of a child in the second degree, extortion in the first degree, robbery in the second degree, vehicular assault, and vehicular homicide, when proximately caused by the driving of any vehicle by any person while under the influence of intoxicating liquor or any drug as defined by RCW 46.61.502, or by the operation of any vehicle in a reckless manner;

(b) Any conviction for a felony offense in effect at any time prior to July 1, 1976, that is comparable to a felony classified as a violent offense in (a) of this subsection; and

(c) Any federal or out-of-state conviction for an offense that under the laws of this state would be a felony classified as a violent offense under (a) or (b) of this subsection.

~~((34))~~ (36) "Work crew" means a program of partial confinement consisting of civic improvement tasks for the benefit of the community of not less than thirty-five hours per week that complies with RCW 9.94A.135. The civic improvement tasks shall be performed on public property or on private property owned or operated by nonprofit entities, except that, for emergency purposes only, work crews may perform snow removal on any private property. The civic improvement tasks shall have minimal negative impact on existing private industries or the labor force in the county where the service or labor is performed. The civic improvement tasks shall not affect employment opportunities for people with developmental disabilities contracted through sheltered workshops as defined in RCW 82.04.385. Only those offenders sentenced to a facility operated or utilized under contract by a county are eligible to participate on a work crew. Offenders sentenced for a sex offense as defined in subsection ~~((29))~~ (31) of this section are not



COMPLETE TEXT OF Initiative Measure 593 (cont.)

eligible for the work crew program.

~~((35))~~ (37) "Work release" means a program of partial confinement available to offenders who are employed or engaged as a student in a regular course of study at school. Participation in work release shall be conditioned upon the offender attending work or school at regularly defined hours and abiding by the rules of the work release facility.

~~((36))~~ (38) "Home detention" means a program of partial confinement available to offenders wherein the offender is confined in a private residence subject to electronic surveillance. Home detention may not be imposed for offenders convicted of a violent offense, any sex offense, any drug offense, reckless burning in the first or second degree as defined in RCW 9A.48.040 or 9A.48.050, assault in the third degree as defined in RCW 9A.36.031, assault of a child in the third degree, unlawful imprisonment as defined in RCW 9A.40.040, or harassment as defined in RCW 9A.46.020. Home detention may be imposed for offenders convicted of possession of a controlled substance (RCW 69.50.401(d)) or forged prescription for a controlled substance (RCW 69.50.403) if the offender fulfills the participation conditions set forth in this subsection and is monitored for drug use by treatment alternatives to street crime (TASC) or a comparable court or agency-referred program.

(a) Home detention may be imposed for offenders convicted of burglary in the second degree as defined in RCW 9A.52.030 or residential burglary conditioned upon the offender: (i) Successfully completing twenty-one days in a work release program, (ii) having no convictions for burglary in the second degree or residential burglary during the preceding two years and not more than two prior convictions for burglary or residential burglary, (iii) having no convictions for a violent felony offense during the preceding two years and not more than two prior convictions for a violent felony offense, (iv) having no prior charges of escape, and (v) fulfilling the other conditions of the home detention program.

(b) Participation in a home detention program shall be conditioned upon: (i) The offender obtaining or maintaining current employment or attending a regular course of school study at regularly defined hours, or the offender performing parental duties to offspring or minors normally in the custody of the offender, (ii) abiding by the rules of the home detention program, and (iii) compliance with court-ordered legal financial obligations. The home detention program may also be made available to offenders whose charges and convictions do not otherwise disqualify them if medical or health-related conditions, concerns or treatment would be better addressed under the home detention program, or where the health and welfare of the offender, other inmates, or staff would be jeopardized by the offender's incarceration.

tion. Participation in the home detention program for medical or health-related reasons is conditioned on the offender abiding by the rules of the home detention program and complying with court-ordered restitution.

NEW SECTION. Sec. 4. OFFENDER NOTIFICATION AND WARNING. A sentencing judge, law enforcement agency, or state or local correctional facility may, but is not required to, give offenders who have been convicted of an offense that is a most serious offense as defined in RCW 9.94A.030 either written or oral notice, or both, of the sanctions imposed upon persistent offenders. General notice of these sanctions and the conditions under which they may be imposed may, but need not, be given in correctional facilities maintained by state or local agencies. This section is enacted to provide authority, but not requirement, for the giving of such notice in every conceivable way without incurring liability to offenders or third parties.

NEW SECTION. Sec. 5. GOVERNOR'S POWERS. (1) Nothing in this act shall ever be interpreted or construed as to reduce or eliminate the power of the governor to grant a pardon or clemency to any offender on an individual case-by-case basis. However, the people recommend that any offender subject to total confinement for life without the possibility of parole not be considered for release until the offender has reached the age of at least sixty years old and has been judged to be no longer a threat to society. The people further recommend that sex offenders be held to the utmost scrutiny under this subsection regardless of age.

(2) Nothing in this section shall ever be interpreted or construed to grant any release for the purpose of reducing prison overcrowding. Furthermore, the governor shall provide twice yearly reports on the activities and progress of offenders subject to total confinement for life without the possibility of parole who are released through executive action during his or her tenure. These reports shall continue for not less than ten years after the release of the offender or upon the death of the released offender.

NEW SECTION. Sec. 6. SEVERABILITY. If any provision of this act or its application to any person or circumstance is held invalid, the remainder of the act or the application of the provision to other persons or circumstances is not affected.

NEW SECTION. Sec. 7. SHORT TITLE. This act shall be known and may be cited as the persistent offender accountability act.

NEW SECTION. Sec. 8. CAPTIONS. Captions as used in this act do not constitute any part of the law.



COMPLETE TEXT OF Initiative Measure 601

AN ACT Relating to greater governmental fiscal responsibility through limitations on expenditures and taxation; amending RCW 43.135.010, 43.135.060, and 43.84.092; adding new sections to chapter 43.135 RCW; adding a new section to chapter 43.88 RCW; creating a new section; repealing RCW 43.88.520, 43.88.525, 43.88.530, 43.88.535, 43.88.540, 43.135.020, 43.135.030, 43.135.040, 43.135.050, 43.135.070, 43.135.900, and 43.135.901; providing an effective date; and declaring an emergency.

BE IT ENACTED BY THE PEOPLE OF THE STATE OF WASHINGTON:

Sec. 1. RCW 43.135.010 and 1980 c 1 s 1 are each amended to read as follows:

The people of the state of Washington hereby find and declare:

(1) The continuing increases in our state tax burden and the corresponding growth of state government is contrary to the interest of the people of the state of Washington.

(2) It is necessary to limit the rate of growth of state government while assuring adequate funding of essential services, including basic education as defined by the legislature.

(3) The current budgetary system in the state of Washington lacks stability. The system encourages crisis budgeting and results in cutbacks during lean years and overspending during surplus years.

(4) It is therefore the intent of this chapter to:

(a) Establish a limit (~~((which))~~) on state expenditures that will assure that the growth rate of state ((tax-revenue)) expenditures does not exceed the growth rate of inflation and state ((personal-income)) population;

(b) Assure that local governments are provided funds adequate to render those services deemed essential by their citizens;

(c) Assure that the state does not impose (~~((on any taxing district))~~) responsibility on local governments for new programs or increased levels of service under existing programs unless the costs thereof are paid by the state;

(d) Provide for adjustment of the limit when costs of a program are transferred between the state and another political entity; (~~((and))~~)

(e) Establish a procedure for exceeding this limit in emergency situations;

(f) Provide for voter approval of tax increases; and

(g) Avoid overfunding and underfunding state programs by providing stability, consistency, and long-range planning.

NEW SECTION. Sec. 2. (1) The state shall not expend from the general fund during any fiscal year state moneys in excess of the state expenditure limit established under this chapter.

(2) Except pursuant to a declaration of emergency under section 4 of this act or pursuant to an appropriation under section 3(4)(b) of this act, the state treasurer shall not issue or redeem any check, warrant, or voucher that will result in a state general fund expenditure for any fiscal year in excess of the state expenditure limit established under this chapter. A violation of this subsection constitutes a violation of RCW 43.88.290 and shall subject the state treasurer to the penalties provided in RCW 43.88.300.

(3) The state expenditure limit for any fiscal year shall be the previous fiscal year's state expenditure limit increased by a percentage rate that equals the fiscal growth factor.

(4) For purposes of computing the state expenditure limit for the fiscal year beginning July 1, 1995, the phrase "the previous fiscal year's state expenditure limit" means the total state expenditures from the state general fund, not including federal funds, for the fiscal year beginning July 1, 1989, plus the fiscal growth factor. This calculation is then computed for the state expenditure limit for fiscal years 1992, 1993, 1994, and 1995, and as required under section 4(4) of this act.

(5) Each November, the office of financial management shall adjust the expenditure limit for the preceding fiscal year based on actual expenditures and known changes in the fiscal growth factor and then project an expenditure limit for the next two fiscal years. The office of financial management shall notify the legislative fiscal committees of all adjustments to the state expenditure limit and projections of future expenditure limits.

(6) "Fiscal growth factor" means the average of the sum of inflation and population change for each of the prior three fiscal years.

(7) "Inflation" means the percentage change in the implicit price deflator for the United States for each fiscal year as published by the federal bureau of labor statistics.

(8) "Population change" means the percentage change in state population for each fiscal year as reported by the office of financial management.

NEW SECTION. Sec. 3. (1) The emergency reserve fund is established in the state treasury. During each fiscal year, the state treasurer shall deposit in the emergency reserve fund all general fund—state revenues in excess of the state expenditure limit for that fiscal year. Deposits shall be made at the end of each fiscal quarter based on projections of state revenues and the state expenditure limit.

(2) The legislature may appropriate moneys from the emergency reserve fund only with approval of at least two-thirds of the members of each house of the legislature, and then only if the appropriation does not cause total expen-



COMPLETE TEXT OF Initiative Measure 601 (cont.)

ditures to exceed the state expenditure limit under this chapter.

(3) The emergency reserve fund balance shall not exceed five percent of biennial general fund—state revenues as projected by the official state revenue forecast. Any balance in excess of five percent shall be transferred on a quarterly basis by the state treasurer to the education construction fund hereby created in the treasury.

(4)(a) Funds may be appropriated from the education construction fund exclusively for common school construction or higher education construction.

(b) Funds may be appropriated for any other purpose only if approved by a two-thirds vote of each house of the legislature and if approved by a vote of the people at the next general election. An appropriation approved by the people under this subsection shall result in an adjustment to the state expenditure limit only for the fiscal period for which the appropriation is made and shall not affect any subsequent fiscal period.

NEW SECTION. Sec. 4. (1) After July 1, 1995, any action or combination of actions by the legislature that raises state revenue or requires revenue-neutral tax shifts may be taken only if approved by a two-thirds vote of each house, and then only if state expenditures in any fiscal year, including the new revenue, will not exceed the state expenditure limits established under this chapter.

(2)(a) If the legislative action under subsection (1) of this section will result in expenditures in excess of the state expenditure limit, then the action of the legislature shall not take effect until approved by a vote of the people at a November general election. The office of financial management shall adjust the state expenditure limit by the amount of additional revenue approved by the voters under this section. This adjustment shall not exceed the amount of revenue generated by the legislative action during the first full fiscal year in which it is in effect. The state expenditure limit shall be adjusted downward upon expiration or repeal of the legislative action.

(b) The ballot title for any vote of the people required under this section shall be substantially as follows:

"Shall taxes be imposed on in order to allow a spending increase above last year's authorized spending adjusted for inflation and population increases?"

(3)(a) The state expenditure limit may be exceeded upon declaration of an emergency for a period not to exceed twenty-four months by a law approved by a two-thirds vote

of each house of the legislature and signed by the governor. The law shall set forth the nature of the emergency, which is limited to natural disasters that require immediate government action to alleviate human suffering and provide humanitarian assistance. The state expenditure limit may be exceeded for no more than twenty-four months following the declaration of the emergency and only for the purposes contained in the emergency declaration.

(b) Additional taxes required for an emergency under this section may be imposed only until thirty days following the next general election, unless an extension is approved at that general election. The additional taxes shall expire upon expiration of the declaration of emergency. The legislature shall not impose additional taxes for emergency purposes under this subsection unless funds in the education construction fund have been exhausted.

(c) The state or any political subdivision of the state shall not impose any tax on intangible property listed in RCW 84.36.070 as that statute exists on January 1, 1993.

(4) If the cost of any state program or function is shifted from the state general fund on or after January 1, 1993, to another source of funding, or if moneys are transferred from the state general fund to another fund or account, the office of financial management shall lower the state expenditure limit to reflect the shift.

Sec. 5. RCW 43.135.060 and 1990 2nd ex.s. c 1 s 601 are each amended to read as follows:

(1) After July 1, 1995, the legislature shall not impose responsibility for new programs or increased levels of service under existing programs on any ((taxing district)) political subdivision of the state unless the ((districts are reimbursed for the costs thereof by the state.

((2)) The amount of increased local revenue and state appropriations and distributions that are received or could be received by a taxing district as a result of legislative enactments after 1979 shall be included as reimbursement under this section. This subsection does not affect litigation pending on January 1, 1990.

((3)) subdivision is fully reimbursed by specific appropriation by the state for the costs of the new programs or increases in service levels.

((2)) If by order of any court, or legislative enactment, the costs of a federal or ((taxing district)) local government program are transferred to or from the state, the otherwise applicable state ((tax revenue)) expenditure limit shall be increased or decreased, as the case may be, by the dollar amount of the costs of the program.

((4)) ((3)) The legislature, in consultation with the office of financial management or its successor agency, shall determine the costs of any new programs or increased levels of service under existing programs imposed on any ((taxing district)) political subdivision or transferred to or from the state.

((5)) ((4)) Subsection (1) of this section does not apply to



COMPLETE TEXT OF Initiative Measure 601 (cont.)

the costs incurred for voting devices or machines under RCW 29.04.200.

Sec. 6. RCW 43.84.092 and 1992 c 235 s 4 are each amended to read as follows:

(1) All earnings of investments of surplus balances in the state treasury shall be deposited to the treasury income account, which account is hereby established in the state treasury.

(2) Monthly, the state treasurer shall distribute the earnings credited to the treasury income account. The state treasurer shall credit the general fund with all the earnings credited to the treasury income account except:

(a) The following accounts and funds shall receive their proportionate share of earnings based upon each account's and fund's average daily balance for the period: The capitol building construction account, the Cedar River channel construction and operation account, the Central Washington University capital projects account, the charitable, educational, penal and reformatory institutions account, the common school construction fund, the county criminal justice assistance account, the county sales and use tax equalization account, the data processing building construction account, the deferred compensation administrative account, the deferred compensation principal account, the department of retirement systems expense account, the Eastern Washington University capital projects account, the education construction fund, the emergency reserve fund, the federal forest revolving account, the industrial insurance premium refund account, the judges' retirement account, the judicial retirement administrative account, the judicial retirement principal account, the local leasehold excise tax account, the local sales and use tax account, the medical aid account, the municipal criminal justice assistance account, the municipal sales and use tax equalization account, the natural resources deposit account, the perpetual surveillance and maintenance account, the public employees' retirement system plan I account, the public employees' retirement system plan II account, the Puyallup tribal settlement account, the resource management cost account, the site closure account, the special wildlife account, the state employees' insurance account, the state employees' insurance reserve account, the state investment board expense account, the state investment board commingled trust fund accounts, the supplemental pension account, the teachers' retirement system plan I account, the teachers' retirement system plan II account, the University of Washington bond retirement fund, the University of Washington building account, the volunteer fire fighters' relief and pension principal account, the vol-

unteer fire fighters' relief and pension administrative account, the Washington judicial retirement system account, the Washington law enforcement officers' and fire fighters' system plan I retirement account, the Washington law enforcement officers' and fire fighters' system plan II retirement account, the Washington state patrol retirement account, the Washington State University building account, the Washington State University bond retirement fund, and the Western Washington University capital projects account. Earnings derived from investing balances of the agricultural permanent fund, the normal school permanent fund, the permanent common school fund, the scientific permanent fund, and the state university permanent fund shall be allocated to their respective beneficiary accounts. All earnings to be distributed under this subsection (2)(a) shall first be reduced by the allocation to the state treasurer's service fund pursuant to RCW 43.08.190.

(b) The following accounts and funds shall receive eighty percent of their proportionate share of earnings based upon each account's or fund's average daily balance for the period: The central Puget Sound public transportation account, the city hardship assistance account, the county arterial preservation account, the economic development account, the essential rail assistance account, the essential rail banking account, the ferry bond retirement fund, the grade crossing protective fund, the high capacity transportation account, the highway bond retirement fund, the highway construction stabilization account, the highway safety account, the motor vehicle fund, the motorcycle safety education account, the pilotage account, the public transportation systems account, the Puget Sound capital construction account, the Puget Sound ferry operations account, the recreational vehicle account, the rural arterial trust account, the special category C account, the state patrol highway account, the transfer relief account, the transportation capital facilities account, the transportation equipment fund, the transportation fund, the transportation improvement account, and the urban arterial trust account.

(3) In conformance with Article II, section 37 of the state Constitution, no treasury accounts or funds shall be allocated earnings without the specific affirmative directive of this section.

NEW SECTION. Sec. 7. A new section is added to chapter 43.88 RCW to read as follows:

The budget document submitted by the governor to the legislature under RCW 43.88.030 shall reflect the state expenditure limit established under chapter 43.135 RCW and shall not propose expenditures in excess of that limit.

NEW SECTION. Sec. 8. No fee may increase in any fiscal year by a percentage in excess of the fiscal growth factor for that fiscal year without prior legislative approval.

NEW SECTION. Sec. 9. The following acts or parts of



COMPLETE TEXT OF Initiative Measure 601 (cont.)

acts are each repealed:

- (1) RCW 43.88.520 and 1981 c 280 s 1;
- (2) RCW 43.88.525 and 1991 sp.s. c 13 s 13, 1985 c 57 s 52, & 1981 c 280 s 2;
- (3) RCW 43.88.530 and 1982 1st ex.s. c 36 s 2 & 1981 c 280 s 3;
- (4) RCW 43.88.535 and 1982 1st ex.s. c 36 s 3 & 1981 c 280 s 4;
- (5) RCW 43.88.540 and 1984 c 138 s 11 & 1981 c 280 s 5;
- (6) RCW 43.135.020 and 1980 c 1 s 2;
- (7) RCW 43.135.030 and 1980 c 1 s 3;
- (8) RCW 43.135.040 and 1980 c 1 s 4;
- (9) RCW 43.135.050 and 1980 c 1 s 5;
- (10) RCW 43.135.070 and 1980 c 1 s 7;
- (11) RCW 43.135.900 and 1980 c 1 s 8; and
- (12) RCW 43.135.901 and 1980 c 1 s 9.

NEW SECTION. Sec. 10. This chapter may be known and cited as the taxpayer protection act.

NEW SECTION. Sec. 11. Sections 2, 3, 4, 8, 9, and 10 of this act are each added to chapter 43.135 RCW.

NEW SECTION. Sec. 12. If any provision of this act or its application to any person or circumstance is held invalid, the remainder of the act or the application of the provision to other persons or circumstances is not affected.

NEW SECTION. Sec. 13. (1) After the effective date of this section, the state may raise existing taxes, impose new taxes as authorized by law, or make revenue-neutral tax shifts only with approval of a majority of the voters at a November general election. The requirement for a vote at a November general election is in addition to any other requirements established by law.

(2) This section expires on July 1, 1995.

NEW SECTION. Sec. 14. (1) Sections 8 and 13 of this act are necessary for the immediate preservation of the public peace, health, or safety, or support of the state government and its existing public institutions, and shall take effect immediately.

(2) Sections 1 through 7 and 9 through 12 of this act shall take effect July 1, 1995.



COMPLETE TEXT OF Initiative Measure 602

AN ACT Relating to limitations on state revenues; amending RCW 43.135.060 and 43.84.092; adding new sections to chapter 43.135 RCW; adding a new section to chapter 82.33 RCW; adding a new section to chapter 43.88 RCW; creating new sections; repealing RCW 43.88.520, 43.88.525, 43.88.530, 43.88.535, 43.88.540, 43.135.010, 43.135.020, 43.135.030, 43.135.040, 43.135.050, 43.135.070, 43.135.900, and 43.135.901; and declaring an emergency.

BE IT ENACTED BY THE PEOPLE OF THE STATE OF WASHINGTON:

NEW SECTION. Sec. 1. FINDINGS AND DECLARATIONS. The people of the state of Washington declare that:

(1) The continued growth in the burden of tax levies and other revenue generating assessments imposed on the citizens and businesses of the state of Washington and the corresponding growth in state government is contrary to the interests of the people of the state of Washington.

(2) It is necessary to reaffirm the people's will to limit the rate of growth of state government while assuring adequate funding of essential services, including basic education as required by Article IX, section 1 of the state Constitution.

(3) During periods of severe economic downturns or fiscal emergencies, receipts of state revenue collections may decline below the state revenue collection limit established in this chapter and, therefore, it is necessary and vital for the state of Washington to maintain an adequate reserve of state revenue collections to provide a resource for the stable financing of essential state services during such periods.

(4) A state tax limitation was passed by a vote of the people at the November 6, 1979, state general election. However, because of a high base calculation, that state tax limitation has not been effective in carrying out the intent of the people to limit revenues and the growth of state government.

NEW SECTION. Sec. 2. INTENT. It is the intent of the people of the state of Washington to:

(1) Establish a limitation that will assure that the growth rate of state revenue collections does not exceed an established percentage of the economy as represented by total state personal income.

(2) Reaffirm that the state shall not impose upon any political subdivision of the state the responsibility for new programs, programs previously offered by the state, or increased levels of service unless the costs of these programs or services are paid or reimbursed by the state.



COMPLETE TEXT OF Initiative Measure 602 (cont.)

(3) Provide for adjustment of the state revenue collection limit when the costs of a federal, state, or political subdivision program, service, project, facility, or activity are transferred in such a manner that the result is an increase or decrease in state revenue collections.

(4) Establish a responsible and fiscally sound revenue reserve fund for use in severe economic downturns or fiscal emergencies.

(5) Establish procedures for the disposition of amounts collected in excess of this limit.

(6) Establish procedures for use when estimated state revenues collections fall below the state revenue collection limit.

(7) Establish procedures for exceeding this limit in emergency situations.

NEW SECTION. Sec. 3. DEFINITIONS. Unless the context clearly requires otherwise, the definitions in this section apply throughout this chapter:

(1) "Estimated state revenue collections" means the estimated state revenue collections as published in the most recent official economic and revenue forecast prepared under RCW 82.33.020.

(2) "Fiscal year" means the year beginning July 1st and ending the following June 30th.

(3) "General obligation debt reduction account" means the general obligation debt reduction account created by this chapter.

(4) "Political subdivision" means any division of the state made by proper authorities thereof, acting within their constitutional or legislatively authorized powers, for the purpose of carrying out the administration of governmental powers of a subordinate or local nature.

(5) "Revenue measure" means any tax, fee, license, charge, assessment, tariff, toll, duty, or other encumbrance levied, set, imposed, or exacted on persons, income, property, or activities or any expansion of the base of any existing tax, fee, license, charge, assessment, tariff, toll, duty, or other encumbrance levied, set, imposed, or exacted on persons, income, property, or activities.

(6) "Revenue reserve fund" means the revenue reserve fund created by this chapter.

(7) "State revenue collections" means all moneys received, collected, or owed from each and every source as required by law or rule, whether or not such funds are otherwise subject to legislative appropriation, including funds maintained or deposited outside the state treasury. Unless otherwise stated to the contrary, the following shall not be included in this definition:

(a) Moneys received as a gift, grant, donation, aid, or

assistance from any person, firm, or corporation, public or private, when the terms and conditions of such gift, grant, donation, aid, or assistance require the application and disbursement of such moneys otherwise than for the general purposes of the state of Washington;

(b) Moneys received as a gift, grant, donation, aid, or assistance from the United States or any department, agency, bureau, or corporation of the United States;

(c) Moneys derived from the investment of funds under the authority of the state investment board pursuant to chapter 43.33A RCW;

(d) Moneys received from performance bonds and deposits;

(e) Moneys paid into or received from the accident fund established under RCW 51.44.010, the medical aid fund established under RCW 51.44.020, the reserve fund established under RCW 51.44.030, the supplemental pension fund established under RCW 51.44.033, and the second injury fund established under RCW 51.44.040, for the purposes authorized as of December 31, 1992;

(f) Moneys paid into or received from trust funds that were created or established prior to December 31, 1992;

(g) Moneys paid into or received from a permanent and irreducible fund of the state that was created or established prior to December 31, 1992;

(h) Moneys received from the sale of bonds or other evidences of indebtedness;

(i) Moneys paid into or deposited to funds or accounts by the state for disbursement to political subdivisions of the state. However, these funds or accounts must have been created or established prior to December 31, 1992;

(j) Moneys dedicated under Article 2, section 40 of the state Constitution;

(k) Moneys paid into or received from the revenue reserve fund; or

(l) Moneys paid into or received from the general obligation debt reduction account.

(8) "State revenue collection limit" or "limit" means the limitation created by this chapter.

(9) "Limitation factor" means the percentage created by dividing the sum of total state revenue collections for the fiscal years 1988 through 1992 by the sum of total state personal income for the fiscal years 1988 through 1992.

(10) "Total state personal income" means the estimated total personal income for the state during a fiscal year as published by the United States department of commerce, bureau of economic analysis, or its successor, and as reported in the most recent official economic and revenue forecast prepared under RCW 82.33.020.

(11) "Undesignated fund balance" means any unreserved and undesignated current assets or other resources available for expenditure over and above any current liabilities that are expected to be incurred by the close of a fiscal year.

NEW SECTION. Sec. 4. LIMITATION FACTOR—



COMPLETE TEXT OF Initiative Measure 602 (cont.)

COMPUTATION. Within thirty days after the effective date of this act, the economic and revenue forecast supervisor, as defined in RCW 82.33.010(2), shall compute the limitation factor defined under section 3 of this act. Upon computing the limitation factor, the economic and revenue forecast supervisor shall make and file with the secretary of state, a certificate containing the results of the computation and any amendment or adjustment thereof. Copies of the certificate shall be sent to each elected official of the state and each member of the legislature.

NEW SECTION. Sec. 5. STATE REVENUE COLLECTION LIMIT—CALCULATION. (1) Unless otherwise provided for in this chapter, the state revenue collection limit for the fiscal year beginning July 1, 1993, and for each fiscal year thereafter, shall be the limitation factor multiplied by the total state personal income for the fiscal year for which the limit is being calculated.

(2) To establish the revenue collection limit for the fiscal year beginning July 1, 1993, the economic and revenue forecast supervisor shall use total state personal income as published by the United States department of commerce, bureau of economic analysis, or its successor, and as reported in the November 1992 official economic and revenue forecast prepared under RCW 82.33.020.

(3) To establish the revenue collection limit for the fiscal year beginning July 1, 1994, the economic and revenue forecast supervisor shall use total state personal income as published by the United States department of commerce, bureau of economic analysis, or its successor, and as reported in the November 1993 official economic and revenue forecast prepared under RCW 82.33.020.

(4) For each fiscal year thereafter, the state revenue collection limit shall be established by the economic and revenue forecast supervisor on November 20 of the year immediately preceding the fiscal year for which the limit is being calculated.

NEW SECTION. Sec. 6. REVENUE MEASURES—ESTIMATED STATE REVENUE COLLECTIONS TO BE WITHIN LIMIT. Except as otherwise provided for in this chapter, all state revenue measures from which state revenue collections are derived shall be imposed, levied, or set by law or rule in such a manner that estimated state revenue collections for each fiscal year will not exceed the state revenue collection limit established for the corresponding fiscal year.

NEW SECTION. Sec. 7. EXPENDITURE REQUIREMENTS. (1) The state shall not expend funds derived from

state revenue collections for any fiscal year in excess of the state revenue collection limit established for the corresponding fiscal year.

(2) Except pursuant to an appropriation provided for a declaration of emergency under section 10 of this act, the state treasurer shall not issue or redeem any check, warrant, or voucher from funds derived from state revenue collections that would result in an expenditure for any fiscal year in excess of the state revenue collection limit for the corresponding fiscal year. A violation of this subsection constitutes a violation of RCW 43.88.290.

(3) In addition to the penalties provided in RCW 43.88.300 for a judgment against the state treasurer for violating RCW 43.88.290, the attorney general may take civil action for such violations.

NEW SECTION. Sec. 8. REVENUE RESERVE FUND. (1) A revenue reserve fund is created in the custody of the state treasurer. Only the state treasurer may transfer moneys to or from the fund as provided in this chapter. On the effective date of this act, all funds currently contained, or on deposit, in the budget stabilization account created under RCW 43.88.525 shall be transferred into the revenue reserve fund.

(2) The state treasurer is authorized to and shall transfer to the revenue reserve fund a sum equal to the amount of any state revenue collections in excess of the state revenue collection limit. Deposits authorized under this subsection shall be made on the last day of each fiscal year based on estimated state revenue collections for that fiscal year.

(3) Upon the completion of any fiscal year for which there is an undesignated fund balance, the state treasurer is hereby authorized to and shall transfer to the revenue reserve fund a sum equal to the amount of any undesignated fund balance.

(4) The state treasurer is authorized to and shall transfer to the revenue reserve fund any other amounts the legislature may from time to time direct to be deposited or transferred into the fund.

(5) The balance of the revenue reserve fund at the end of a fiscal year shall not exceed two and one-half percent of the immediately preceding fiscal year's state revenue collection limit. Any amount in excess of this two and one-half percent limit shall be transferred by the state treasurer to the general obligation debt reduction account.

NEW SECTION. Sec. 9. ESTIMATED STATE REVENUE COLLECTIONS BELOW LIMIT—PROCEDURES FOR IMPOSITION OF REVENUE MEASURES. (1) If, at the time the state revenue collection limit is established as required pursuant to section 5 of this act, the estimated state revenue collections for the corresponding fiscal year are projected to be below the state revenue collection limit, the state treasurer shall immediately transfer to the state general fund from amounts available in the revenue reserve



COMPLETE TEXT OF Initiative Measure 602 (cont.)

fund a sum equal to the difference between estimated state revenue collections and the state revenue collection limit for use during such fiscal year.

(2) If the procedure required under subsection (1) of this section has been implemented and there remains a difference between the state revenue collection limit and estimated revenue collections, the legislature may, by an affirmative vote of sixty percent of each house, enact revenue measures necessary to generate any sum that is equal to or below the state revenue collection limit less the estimated state revenue collections.

(3) Any revenue measure enacted pursuant to subsection (2) of this section may be imposed, levied, or set by law or rule for a period not to exceed twenty-four months from the effective date of such revenue measure.

NEW SECTION. Sec. 10. WHEN STATE REVENUE COLLECTION LIMIT MAY BE EXCEEDED—CONDITIONS. (1) The state revenue collection limit may be exceeded upon declaration of an emergency by the governor and a law approved by an affirmative vote of seventy-five percent of each house of the legislature. The declaration of emergency shall set forth the circumstances constituting the emergency and the amount of state revenue collections in excess of the applicable state revenue collection limit necessary to meet the emergency.

(2) A declaration of emergency for the purposes of exceeding the state revenue collection limit shall not exceed twenty-four months.

(3) The state revenue collection limit may be exceeded by an amount no greater than that indicated by the governor in his or her emergency declaration.

(4) The amount of state revenue collections authorized under this section in excess of the state revenue collection limit is not subject to the provisions of sections 7(2) and 8(2) of this act.

(5) Revenue measures enacted to meet the costs of an emergency under this section may be imposed, levied, or set by law or rule for a period not to exceed twenty-four months from the effective date of the revenue measures. However, all revenue measures enacted to meet the cost of an emergency under this section shall expire immediately upon the expiration of the declaration of emergency.

NEW SECTION. Sec. 11. STATE REVENUE COLLECTION LIMIT—ADJUSTMENTS. (1) If by order of any court, the costs of a federal, state, or political subdivision program, service, project, facility, or activity are transferred in such a manner that the result is an increase or decrease

in state revenue collections, the limitation factor shall be adjusted and the state revenue collection limit recalculated as provided in this section. The office of financial management shall determine the total dollar amount of any increase or decrease in state revenue collections caused by such a transfer.

(2) For the purpose of this section, "adjusted limitation factor" means the total dollar amount of any such increase or decrease in state revenue collections for the fiscal year in which the increase or decrease is effective divided by the corresponding fiscal year's total state personal income plus or minus the limitation factor or the most recent adjusted limitation factor.

(3) For the fiscal year in which any such increase or decrease is effective and for each fiscal year thereafter, the state revenue collection limit shall be the adjusted limitation factor multiplied by total state personal income for the fiscal year for which the limit is being recalculated or calculated.

(4) For the fiscal year in which any state revenue collections increase or decrease required by subsection (1) of this section become effective, the state revenue collection limit as adjusted in this section shall be recalculated by the economic and revenue forecast supervisor prior to the beginning of that fiscal year. For the fiscal years thereafter, the state revenue collection limit shall be established by the economic and revenue forecast supervisor on November 20 of the year immediately preceding the fiscal year for which the state revenue collection limit is being calculated.

NEW SECTION. Sec. 12. GENERAL OBLIGATION DEBT REDUCTION ACCOUNT. The general obligation debt reduction account is created in the state treasury. Moneys in the account may be spent only following appropriation by law and shall be used solely for the purposes of reducing the outstanding principle and interest of the general obligation indebtedness of the state of Washington.

Sec. 13. RCW 43.135.060 and 1990 2nd ex.s. c 1 s 601 are each amended to read as follows:

(1) The legislature shall not impose responsibility for new programs, programs previously provided by the state, or increased levels of service under existing programs on any ~~((taxing district))~~ political subdivision of the state unless the ~~((districts))~~ costs of the program or increased service are reimbursed ~~((for the costs thereof))~~ by the state.

(2) The amount of increased local revenue and state appropriations and distributions that are received or could be received by a ~~((taxing district))~~ political subdivision of the state as a result of legislative enactments after 1979 shall be included as reimbursement under subsection (1) of this section. This subsection does not affect litigation pending on January 1, 1990.

(3) ~~((If by order of any court, or legislative enactment, the costs of a federal or taxing district program are transferred~~



COMPLETE TEXT OF Initiative Measure 602 (cont.)

~~to or from the state, the otherwise applicable state tax revenue limit shall be increased or decreased, as the case may be, by the dollar amount of the costs of the program.~~

~~(4) The legislature, in consultation with the office of financial management or its successor agency, shall determine the costs of any new programs or increased levels of service under existing programs imposed on any taxing district or transferred to or from the state.~~

~~(5)) Subsection (1) of this section does not apply to the costs incurred for voting devices or machines under RCW 29.04.200.~~

~~(4) No portion of the reimbursement provided under subsection (1) of this section by the state to a political subdivision may be in the form of authorization for a new or increased revenue measure.~~

NEW SECTION. Sec. 14. A new section is added to chapter 82.33 RCW to read as follows:

The official, optimistic, and pessimistic revenue forecasts prepared under RCW 82.33.020 shall include revenue estimates for all state revenue collections as defined in chapter 43.135 RCW.

Sec. 15. RCW 43.84.092 and 1992 c 235 s 4 are each amended to read as follows:

(1) All earnings of investments of surplus balances in the state treasury shall be deposited to the treasury income account, which account is hereby established in the state treasury.

(2) Monthly, the state treasurer shall distribute the earnings credited to the treasury income account. The state treasurer shall credit the general fund with all the earnings credited to the treasury income account except:

(a) The following accounts and funds shall receive their proportionate share of earnings based upon each account's and fund's average daily balance for the period: The capitol building construction account, the Cedar River channel construction and operation account, the Central Washington University capital projects account, the charitable, educational, penal and reformatory institutions account, the common school construction fund, the county criminal justice assistance account, the county sales and use tax equalization account, the data processing building construction account, the deferred compensation administrative account, the deferred compensation principal account, the department of retirement systems expense account, the Eastern Washington University capital projects account, the federal forest revolving account, the general obligation debt reduction account, the industrial insurance premium

refund account, the judges' retirement account, the judicial retirement administrative account, the judicial retirement principal account, the local leasehold excise tax account, the local sales and use tax account, the medical aid account, the municipal criminal justice assistance account, the municipal sales and use tax equalization account, the natural resources deposit account, the perpetual surveillance and maintenance account, the public employees' retirement system plan I account, the public employees' retirement system plan II account, the Puyallup tribal settlement account, the resource management cost account, the revenue reserve fund, the site closure account, the special wildlife account, the state employees' insurance account, the state employees' insurance reserve account, the state investment board expense account, the state investment board commingled trust fund accounts, the supplemental pension account, the teachers' retirement system plan I account, the teachers' retirement system plan II account, the University of Washington bond retirement fund, the University of Washington building account, the volunteer fire fighters' relief and pension principal account, the volunteer fire fighters' relief and pension administrative account, the Washington judicial retirement system account, the Washington law enforcement officers' and fire fighters' system plan I retirement account, the Washington law enforcement officers' and fire fighters' system plan II retirement account, the Washington state patrol retirement account, the Washington State University building account, the Washington State University bond retirement fund, and the Western Washington University capital projects account. Earnings derived from investing balances of the agricultural permanent fund, the normal school permanent fund, the permanent common school fund, the scientific permanent fund, and the state university permanent fund shall be allocated to their respective beneficiary accounts. All earnings to be distributed under this subsection (2)(a) shall first be reduced by the allocation to the state treasurer's service fund pursuant to RCW 43.08.190.

(b) The following accounts and funds shall receive eighty percent of their proportionate share of earnings based upon each account's or fund's average daily balance for the period: The central Puget Sound public transportation account, the city hardship assistance account, the county arterial preservation account, the economic development account, the essential rail assistance account, the essential rail banking account, the ferry bond retirement fund, the grade crossing protective fund, the high capacity transportation account, the highway bond retirement fund, the highway construction stabilization account, the highway safety account, the motor vehicle fund, the motorcycle safety education account, the pilotage account, the public transportation systems account, the Puget Sound capital construction account, the Puget Sound ferry operations account, the recreational vehicle account, the rural arterial



COMPLETE TEXT OF Initiative Measure 602 (cont.)

trust account, the special category C account, the state patrol highway account, the transfer relief account, the transportation capital facilities account, the transportation equipment fund, the transportation fund, the transportation improvement account, and the urban arterial trust account.

(3) In conformance with Article II, section 37 of the state Constitution, no treasury accounts or funds shall be allocated earnings without the specific affirmative directive of this section.

NEW SECTION. Sec. 16. A new section is added to chapter 43.88 RCW to read as follows:

The budget document submitted by the governor to the legislature under RCW 43.88.030 shall reflect the state revenue collection limit established under chapter 43.135 RCW and shall not propose expenditures from funds derived from state revenue collections in excess of the state revenue collection limit established for the fiscal year or years to which the budget pertains.

NEW SECTION. Sec. 17. REVENUE MEASURES REPEAL. (1) Upon the effective date of this act, all actions or combinations of actions by the state to increase state revenue measures over those in effect on December 31, 1992, shall revert to those in effect on December 31, 1992, except for those under sections 9 and 10 of this act.

(2) The code reviser, in cooperation with the fiscal committees of the house of representatives and the senate, shall develop a correction bill to reflect the changes required by subsection (1) of this section. The correction bill shall be introduced during the legislative session immediately following the effective date of this act.

(3) Prior to the adoption of the correction bill required under this section, the governor may utilize any means provided by law to ensure that the expenditure of funds derived from state revenue collections does not exceed the state revenue collection limit.

NEW SECTION. Sec. 18. REPEALER. The following acts or parts of acts are each repealed:

- (1) RCW 43.88.520 and 1981 c 280 s 1;
- (2) RCW 43.88.525 and 1991 sp.s. c 13 s 13, 1985 c 57 s 52, & 1981 c 280 s 2;
- (3) RCW 43.88.530 and 1982 1st ex.s. c 36 s 2 & 1981 c 280 s 3;
- (4) RCW 43.88.535 and 1982 1st ex.s. c 36 s 3 & 1981 c 280 s 4;
- (5) RCW 43.88.540 and 1984 c 138 s 11 & 1981 c 280 s 5;

- (6) RCW 43.135.010 and 1980 c 1 s 1;
- (7) RCW 43.135.020 and 1980 c 1 s 2;
- (8) RCW 43.135.030 and 1980 c 1 s 3;
- (9) RCW 43.135.040 and 1980 c 1 s 4;
- (10) RCW 43.135.050 and 1980 c 1 s 5;
- (11) RCW 43.135.070 and 1980 c 1 s 7;
- (12) RCW 43.135.900 and 1980 c 1 s 8; and
- (13) RCW 43.135.901 and 1980 c 1 s 9.

NEW SECTION. Sec. 19. SHORT TITLE. This chapter shall be known and cited as the state revenue collection limitation act of 1993.

NEW SECTION. Sec. 20. SEVERABILITY. If any provision of this act or its application to any person or circumstance is held invalid, the remainder of the act or the application of the provision to other persons or circumstances is not affected.

NEW SECTION. Sec. 21. CODIFICATION INSTRUCTIONS. Sections 1 through 12 and 19 of this act are each added to chapter 43.135 RCW.

NEW SECTION. Sec. 22. CAPTIONS NOT LAW. Section headings as used in this act do not constitute any part of the law.

NEW SECTION. Sec. 23. EMERGENCY CLAUSE. This act is necessary for the immediate preservation of the public peace, health, or safety, or support of the state government and its existing public institutions, and shall take effect immediately, and the first fiscal year for which the state revenue collection limit shall be in effect is the fiscal year beginning July 1, 1993.

PLEASE NOTE:

In the preceding and following measures, all words in double brackets with a line through them are in the State Law or Constitution at the present time and are being taken out by the measure. All words underlined do not appear in the State Law or Constitution as they are now written but will be put in if the measure is adopted.



COMPLETE TEXT OF House Joint Resolution 4200

BE IT RESOLVED, BY THE SENATE AND HOUSE OF REPRESENTATIVES OF THE STATE OF WASHINGTON, IN LEGISLATIVE SESSION ASSEMBLED:

THAT, At the next general election to be held in this state there shall be submitted to the qualified voters of the state for their approval and ratification, or rejection, an amendment to Article I, section 11 of the Constitution of the state of Washington to read as follows:

Article I, section 11. Absolute freedom of conscience in all matters of religious sentiment, belief and worship, shall be guaranteed to every individual, and no one shall be molested or disturbed in person or property on account of religion; but the liberty of conscience hereby secured shall not be so construed as to excuse acts of licentiousness or justify practices inconsistent with the peace and safety of the state. No public money or property shall be appropriated for or applied to any religious worship, exercise or instruction, or the support of any religious establishment: PROVIDED, HOWEVER, That this article shall not be so construed as to forbid the employment by the state of a chaplain for such of the state custodial, correctional, and mental institutions, or by a county's or public hospital district's hospital, health care facility, or hospice, as in the discretion of the legislature may seem justified. No religious qualification shall be required for any public office or employment, nor shall any person be incompetent as a witness or juror, in consequence of his opinion on matters of religion, nor be questioned in any court of justice touching his religious belief to affect the weight of his testimony.

BE IT FURTHER RESOLVED, That the secretary of state shall cause notice of the foregoing constitutional amendment to be published at least four times during the four weeks next preceding the election in every legal newspaper in the state.

PLEASE NOTE:

To obtain a copy of the preceding and following texts for the state measures in larger print, call the Secretary of State's toll-free hotline -- 1-800-448-4881.



COMPLETE TEXT OF House Joint Resolution 4201

BE IT RESOLVED, BY THE SENATE AND HOUSE OF REPRESENTATIVES OF THE STATE OF WASHINGTON, IN LEGISLATIVE SESSION ASSEMBLED:

THAT, At the next general election to be held in this state there shall be submitted to the qualified voters of the state for their approval and ratification, or rejection, an amendment to Article IV, section 6 of the Constitution of the state of Washington to read as follows:

Article IV, section 6. Superior courts and district courts have concurrent jurisdiction in cases in equity. The superior court shall have original jurisdiction (~~in all cases in equity and~~) in all cases at law which involve the title or possession of real property, or the legality of any tax, impost, assessment, toll, or municipal fine, and in all other cases in which the demand or the value of the property in controversy amounts to three thousand dollars or as otherwise determined by law, or a lesser sum in excess of the jurisdiction granted to justices of the peace and other inferior courts, and in all criminal cases amounting to felony, and in all cases of misdemeanor not otherwise provided for by law; of actions of forcible entry and detainer; of proceedings in insolvency; of actions to prevent or abate a nuisance; of all matters of probate, of divorce, and for annulment of marriage; and for such special cases and proceedings as are not otherwise provided for. The superior court shall also have original jurisdiction in all cases and of all proceedings in which jurisdiction shall not have been by law vested exclusively in some other court; and said court shall have the power of naturalization and to issue papers therefor. They shall have such appellate jurisdiction in cases arising in justices' and other inferior courts in their respective counties as may be prescribed by law. They shall always be open, except on nonjudicial days, and their process shall extend to all parts of the state. Said courts and their judges shall have power to issue writs of mandamus, quo warranto, review, certiorari, prohibition, and writs of habeas corpus, on petition by or on behalf of any person in actual custody in their respective counties. Injunctions and writs of prohibition and of habeas corpus may be issued and served on legal holidays and nonjudicial days.

BE IT FURTHER RESOLVED, That the secretary of state shall cause notice of the foregoing constitutional amendment to be published at least four times during the four weeks next preceding the election in every legal newspaper in the state.

COMMENT SHEET

The Secretary of State's office is continually trying to improve the service it offers to the people of Washington. Your assistance is vital to our success. Please take a few moments to complete the comment sheet below and return it to the Office of the Secretary of State, P.O. Box 40231, Olympia, WA 98504-0231. Please attach additional sheets if necessary.

1. Do you feel participation in politics through voting is convenient in Washington? Do you have any suggestions about how to improve voter participation in Washington? Would you be willing to support government efforts to increase voter participation?

2. Do you find it convenient to register to vote in Washington? Do you have any ideas on how to improve the voter registration processes in Washington?

3. How do you feel about the Voters Pamphlet information being presented to the public through another medium, such as through video, television, or telephone, for example? Are you willing to support government efforts to investigate these alternative options?

4. Have you ever called the Voter Hotline (1-800-448-4881)? Was the recorded information helpful? Were you contacted with the requested information in a timely fashion? Was the operator helpful? Do you have any suggestions about how to improve this service?

5. Do you have any suggestions which might improve the Voters Pamphlet or any other service of the Secretary of State?

WASHINGTON STATE VOTER INFORMATION

The Washington State County Auditors Association also provides an ongoing voter outreach program. If you have any questions about voter registration or voting, please contact your local county auditor's office.

<u>COUNTY</u>	<u>NUMBER</u>	<u>COUNTY</u>	<u>NUMBER</u>
Adams	659-0090 Ext 203*	Lincoln	725-4971*
Asotin	243-2084*	Mason	427-9670 Ext 470
Benton	783-1310 Ext 5618*		1-800-562-5628 Ext 470
Chelan	664-5432*	Okanogan	422-7240*
Clallam	452-7831	Pacific	875-9317
Clark	699-2345	Pend Oreille	447-3185*
Columbia	382-4541*	Pierce	591-7430
Cowlitz	577-3005		1-800-446-4979
Douglas	745-8527*	San Juan	378-3357
Ferry	775-5200*	Skagit	336-9305
Franklin	545-3536*	Skamania	427-9420*
Garfield	843-1411*	Snohomish	388-3444
Grant	754-2011 Ext 333*		1-800-562-4367
Grays Harbor	249-4232	Spokane	456-2320*
Island	679-7366	Stevens	684-7514*
Jefferson	385-9119	Thurston	786-5408
	1-800-831-2678		1-800-624-1234 Ext 5408
King	296-8683	Wahkiakum	795-3219
Kitsap	876-7128	Walla Walla	527-3204*
Kittitas	962-7503*	Whatcom	676-6742
Klickitat	773-4001*	Whitman	397-6270*
Lewis	740-1278	Yakima	575-4044*
	1-800-562-6130		

* Area Code: 509

The numbers listed below are for use by the hearing impaired using Telecommunications Device for the Deaf (TDD) service. The Office of the Secretary of State also provides a toll-free voter information service for the hearing impaired: **TOLL-FREE HEARING IMPAIRED VOTER INFORMATION 1-800-422-8683**. If you are using an "800 number" for TDD service, you must be prepared to give the relay service operator the number for your county auditor listed at the **top** of this page.

<u>COUNTY</u>	<u>NUMBER</u>	<u>COUNTY</u>	<u>NUMBER</u>
Adams	659-1122*	Lewis	740-1480
Asotin	1-800-855-1155	Lincoln	1-800-833-6388
Benton	736-3063*	Mason	1-800-344-4358
Chelan	1-800-833-6388	Okanogan	1-800-855-1155
Clallam	1-800-833-6388	Pacific	875-9400
Clark	737-6032	Pend Oreille	447-3186*
Columbia	382-4541*	Pierce	1-800-344-4358
Cowlitz	1-800-833-6388	San Juan	378-4151
Douglas	884-9477*	Skagit	336-9386
Ferry	1-800-833-6388	Skamania	1-800-833-6388
Franklin	1-800-344-4358	Snohomish	388-3700
Garfield	1-800-344-4358	Spokane	456-2333*
Grant	754-4646*	Stevens	1-800-833-6388
Grays Harbor	249-3731	Thurston	754-2933
Island	679-7305	Wahkiakum	1-800-833-6388
Jefferson	1-800-344-4358	Walla Walla	1-800-833-6388
King	296-0109	Whatcom	1-800-855-1155
Kitsap	1-800-833-6388	Whitman	1-800-833-6388
Kittitas	1-800-833-6388	Yakima	575-4078*
Klickitat	1-800-833-6388		

* Area Code: 509

ABSENTEE BALLOT REQUEST

TO BE FILLED OUT BY APPLICANT
I HEREBY DECLARE THAT I AM A REGISTERED VOTER
PLEASE PRINT IN INK

Registered Name _____

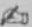
Street Address _____

City _____ Zip _____

Telephone: (Day) _____ (Evening) _____

For identification purposes only:
(Optional) Birth Date _____ Have you recently
registered to vote? Yes ☐ No ☐

TO BE VALID, YOUR SIGNATURE MUST BE INCLUDED
Date _____

SIGNATURE 

SEND MY BALLOT TO THE FOLLOWING ADDRESS:

Mailing Address _____

City _____

State _____

Zip _____ Country _____

THIS APPLICATION IS FOR:

General Election Only

November 2, 1993

☐

Permanent Request

All Future Elections

☐

FOR OFFICE USE ONLY:

Precinct Code _____

Levy Code _____

Ballot Code _____

Ballot Mailed _____

SNOHOMISH CO. VOTERS RETURN TO:

3000 Rockefeller Ave, MS 505
Everett, WA 98201-4060

ISLAND COUNTY VOTERS RETURN TO:

P.O. Box 5000
Coupeville, WA 98239

ABSENTEE BALLOT REQUEST

TO BE FILLED OUT BY APPLICANT
I HEREBY DECLARE THAT I AM A REGISTERED VOTER
PLEASE PRINT IN INK

Registered Name _____

Street Address _____

City _____ Zip _____

Telephone: (Day) _____ (Evening) _____

For identification purposes only:
(Optional) Birth Date _____ Have you recently
registered to vote? Yes ☐ No ☐

TO BE VALID, YOUR SIGNATURE MUST BE INCLUDED
Date _____

SIGNATURE 

SEND MY BALLOT TO THE FOLLOWING ADDRESS:

Mailing Address _____

City _____

State _____

Zip _____ Country _____

THIS APPLICATION IS FOR:

General Election Only

November 2, 1993

☐

Permanent Request

All Future Elections

☐

FOR OFFICE USE ONLY:

Precinct Code _____

Levy Code _____

Ballot Code _____

Ballot Mailed _____

SNOHOMISH CO. VOTERS RETURN TO:

3000 Rockefeller Ave, MS 505
Everett, WA 98201-4060

ISLAND COUNTY VOTERS RETURN TO:

P.O. Box 5000
Coupeville, WA 98239

Organic Act
*An Act To Establish
The Territorial Government
Of [Washington] Washingtonia*
[Approved March 2, 1853.]

Be it enacted by the Senate and the House of Representatives of the United States of America in Congress assembled, That from and after the passage of this act, all that portion of Oregon Territory lying and being south of the forty-ninth degree of north latitude, and north of the middle of the main channel of the Columbia river, from its mouth to where the forty-sixth degree of north latitude crosses said river, near Fort Walla Walla, thence with said forty-sixth degree of latitude to the summit of the Rocky Mountains, be organized into and constitute a temporary government, by the name of the Territory of [Washington] Washingtonia; Provided, That nothing in this act contained shall be construed to affect the authority of the government of the United States to make any regulations respecting the Indians of said Territory, their lands, property, or other rights, by treaty, law, or otherwise, which it would have been competent to the government to make if this act had never been passed: Provided further, That the title to the land, not exceeding six hundred and forty acres, now occupied as missionary stations among the Indian tribes in said Territory, or that may have been so

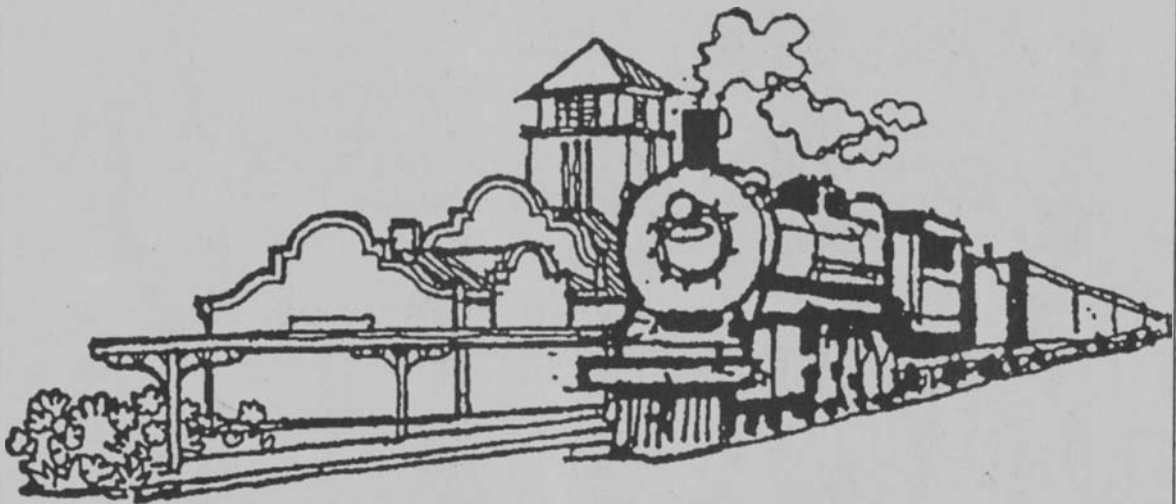
Pioneer Spirit



Photo by GORDON KING/Yakima Herald-Republic

A 1993 "Pioneer Spirit" wagon train commemorates the 150th anniversary of the Oregon Trail. The 14 wagons and 200 latter-day pioneers retraced 170 miles of the trail. Their 10-day trip began at the Columbia River and ended in Puyallup.

Snohomish County's Local Voters' Pamphlet



**Celebrating 100 years of Railroading
in Snohomish County**

Published by the Snohomish County Auditor's Office

Thanks to the League of Snohomish County Historical Organizations and it's Rails Northwest '93 program commemorating over 100 years of rail transport in Snohomish County. The League supplied extensive historical information and photographs for this pamphlet. Thanks are also extended to photographer Warren Wing and the historical societies of Darrington, Edmonds, Index, Monroe, Mukilteo, Snohomish, Stanwood and Sultan for use of their historical photographic collections. The Everett Public Library and Seattle Museum of History and Industry must also be commended for their assistance in providing photographs and historical data.

Special thanks to Louise Lindgren, President of the Snohomish County Historical Organizations, the Snohomish County Planning Department, Margaret Riddle of the Everett Public Library's Northwest Room and artist Bernie Webber for granting use of his sketch of the Everett Great Northern Depot utilized as our Local Voters' Pamphlet cover.

Dear Snohomish County Citizen:

The Snohomish County Auditor's Office is pleased to present its third Local Voters' Pamphlet. We enjoy a good professional working relationship with the Secretary of State's Office and find that this joint pamphlet provides you both state and local information on candidates and issues in one combined pamphlet. It also allows us to deliver this information to you through a cost effective process.

We started the Local Voters' Pamphlet in 1991 with the firm belief that citizens and voters of Snohomish County wanted to know more about their local candidates and issues and deserved to have that information available to them in a voters' pamphlet. We were supported in that belief by the County Executive and County Council. However, most importantly we were supported by all of you who now enjoy the benefits of the Local Voters' Pamphlet.

As more and more people opt to vote by absentee ballot the Local Voters' Pamphlet becomes an even more important part of the voting process

As we celebrate history in and around Snohomish County this year with such events as the City of Everett Centennial, 100 years of railroading in the Pacific Northwest and 150 years since the opening of the Oregon Trail, let's remember the importance of being not only registered to vote ... but voting itself. Citizenship includes promoting good government. This is a two part process. Citizens must take an active, informed role in exercising their right to choose community leaders. Then those leaders **must be** responsive to that electorate. As a mandate of the people, the ballot box is a powerful tool in the evolution of efficient, effective, responsible government at the city, county, state and national level.

TAKE ADVANTAGE OF YOUR RIGHT AND RESPONSIBILITY
REMEMBER - REGISTER AND VOTE!!

Sincerely,



Bob Terwilliger
Snohomish County Auditor



Snohomish County

C
O
U
N
C
I
L

D
I
S
T
R
I
C
T

1



**Ross
KANE**
Democrat

In the last four years, Ross made thousands of decisions. Most of them didn't make headlines. But they all made a difference.

Ross works hard to make County Government better, more open, more responsive, and more efficient.

Four years ago, Snohomish County resurfaced only ten miles of road a year. It now resurfaces 120 miles a year. Ross believes before the County asks for more money, it needs to do a better job with the money it has. That's why Ross opposed higher permit and inspection fees and the \$15.00 license tab surcharge.

Ross shares your goals for a safe, secure community. That's why he has supported expanding D.A.R.E., more Deputy Sheriffs, more Prosecuting Attorneys and more beds in the jail.

Ross is working to protect rural areas, and rural zoning. Home owners should not be annexed without a vote.

Ross championed the Centennial Trail, protecting Mother Nature's Window and helped get Lundeen Park completed after 20 years on the drawing board.

"I've worked hard and I'm proud of what we accomplished. But there is still a lot to do. We need less crime, more parks, safer neighborhoods, better roads and improved service. That's what I intend to do."



**John
GARNER**
Republican

I'm declaring my candidacy for the "sake of public service." It is my goal to bring county government back to the people!

I am confident that I can accomplish this goal by demonstrating to the electorate a sincere desire to represent all of them in a fair and open manner. I will be visible and available to the citizens of district #1.

I will support legislation that will encourage economic development to provide jobs for the citizens of Snohomish County. Policies that enhance "Public Safety" will have my support, especially those that strengthen law enforcement.

Our five freedoms as listed in the Bill of Rights, press, speech, religion, assembly and petition, must be provided and protected at all times by those representing the people. I will protect the five freedoms!

CAMPAIGN MAILING ADDRESS: P.O. Box 1593, Marysville, WA 98270 PHONE NUMBER: 659-3242



**Ronald B.
LOVE**
Independent

As one individual on a council of six, I cannot make and/or set policy. As a member of a six person team - I can voice and argue your problems - and help decide the policy Snohomish County operates with.

I would like to see town meetings that produce constructive results without outside interference. County government should support those meetings to the best of its abilities.

Contractors, both union and non, as well as large and small businesses, are better qualified than many in government to police their own respective fields. Their input through a central body to the Council would be most welcome.

Many permits contractors and businesses are required to obtain are strictly money makers and should be removed. SEPA reviews, when required, should be paid for by the county and done quickly.

I would like to see the timber industry back on its feet and commercial airline terminals at Paine Field. Rapid transit as proposed is too expensive. Burlington Northern's rail lines are already in place and BN has the know-how to make it work.

We are all responsible for the environment.

Please no contributions.

CAMPAIGN MAILING ADDRESS: P.O. Box 309, Snohomish, WA 98291

Snohomish County



A
U
D
I
T
O
R



**Bob
TERWILLIGER**
Democrat

The Auditor's Office handles vehicle, vessel, marriage and business licensing; records legal documents such as plats, liens and mortgages; registers voters and conducts elections. As Chief Deputy Auditor for 10 years and before that as legal advisor to the Auditor's Office for 3 years, I have gained a thorough knowledge of these highly technical and complex areas.

Government that is competent, cost effective and accountable doesn't just happen. It requires leaders who are qualified, experienced and committed to public service. I am proud to say that the Auditor's Office has a well deserved reputation for customer service; consistently generates more revenue than it costs to operate; and has made strategic investments in technology to remain productive without staff expansion. I have the knowledge, experience and vision to continue this excellent record of accomplishment.

I believe service to the public is a high calling and that the quality of life in a community is profoundly shaped by the quality of its government services. My pledge to you is to continue to provide licensing, recording, voter registration and election services of the highest calibre. I ask for your vote for Snohomish County Auditor on November 2nd.

CAMPAIGN MAILING ADDRESS: P.O. Box 3695, Everett, WA 98203 PHONE NUMBER: 481-4107



**Al
SCHWEPPE**
Republican

It is time to end the status quo. For nearly sixty years, one party has ruled the Snohomish County Auditor's Office. One party rule cannot represent the diverse interests of our county. We need leaders who will represent all citizens. Al Schweppe is a leader who will consider all viewpoints and restore checks and balances in county government.

Al Schweppe cares about Snohomish County. He grew up here and understands our concerns and issues. Looking out for the taxpayer is Schweppe's top priority. He believes the citizens of Snohomish County deserve the most efficient and cost effective Auditor's Office, with emphasis on customer service.

Al Schweppe will get out of the courthouse and into the community. Schweppe believes government closest to the people is the best government. He will facilitate, promote and encourage greater citizen participation in county government. Taxpayers will have access to this public servant, and working together, changes will happen.

A Native Washingtonian, attorney Al Schweppe resides in Edmonds. He is a graduate of Edmonds High School, Seattle University and the University of Puget Sound Law School. He is a former congressional aide and U.S. Army Officer.

CAMPAIGN MAILING ADDRESS: P.O. Box 5524, Lynnwood, WA 98046 PHONE NUMBER: 778-2670

The Importance of One Vote



- In 1801, Thomas Jefferson defeated Aaron Burr and was elected president by the members of the House of Representatives by one vote.
- In 1960, John F. Kennedy defeated Richard Nixon by an average of less than one vote per precinct.
- Oliver Cromwell gained control of England by only one vote.
- One vote brought Texas into the Union.
- One vote gave Hitler leadership of the Nazi Party.



City of Arlington Council

LOCAL FOCUS: Arlington, located in northwestern Snohomish County, is 15 miles north and slightly east of Everett along the Stillaguamish River. Located at the foot of the Cascade Mountain range, the City covers nine square miles and has a current population of 4690.

P
O
S
I
T
I
O
N

1



**Montey O.
HAGENSTON**

Candidate did not submit a statement or a photograph.

UNOPPOSED

P
O
S
I
T
I
O
N

2



**Tim
DAUGHERTY**

I've been an area resident since 1968 and have lived in Arlington since 1978. I've been involved in my union and on safety committees during my 18 years with Burlington Northern.

I'm married, with one daughter. I have been active in her school and involved in many committees in the Arlington School District. I have volunteered for city committees and feel we should be aggressive in assuring the continuation of our town values. Bike paths for our children, streets, sidewalks and our neighborhoods and parks are among my concerns, along with incentives for recycling.

I will bring energy and a new approach to the Arlington City Council.

CAMPAIGN MAILING ADDRESS: 109 N Dunham, Arlington, WA 98223 PHONE NUMBER: 435-9690



**Bea
RANDALL**

I have served on the council for 11 1/2 years. Before that, I served a four year term as an Arlington Airport Commissioner. The past three years I have been Mayor Pro-Tem, filling in for the mayor when he is on vacation.

My goal on the council is to help guide Arlington's growth as it becomes a well-planned small city with an adequate financial base, surrounded by its historic agriculture lands and retaining the beauty and health of many "natural" areas within its boundaries.

I have served on every council standing committee and currently chair solid waste. I headed a council and citizens' committee that set out to bring Arlington into compliance with the state recycling laws, and ended up finding that to save each household money we needed to take the city out of the garbage business and negotiated what committee members agreed upon as a "best package" with the private hauler we chose. I attend up to 13 additional meetings a year on solid waste at the county and state levels to try to stay current on knowledge in this area that our city may need, and up-to-date on what direction our county is going.

CAMPAIGN MAILING ADDRESS: 427 S French, Arlington, WA 98223 PHONE NUMBER: 435-3892

City of Arlington Council



P
O
S
I
T
I
O
N

3



**Keith
PACE**

The citizens of Arlington deserve a prosperous livable community. The city government must encourage and plan for continuous controlled growth, while maintaining the highest level of services to its citizens. I will carefully study every growth issue to insure the services provided by the city will never be limited or compromised by poor planning.

I have lived and taught in Arlington for twenty-five years, and have served a term on the city's planning commission. I have worked with many of the community's youth organizations. I know the city and it's recent developmental history and I know I can help Arlington remain the kind of community in which we all want to live.

CAMPAIGN MAILING ADDRESS: 421 E Gilman, Arlington, WA 98223 PHONE NUMBER: 435-5209



**Larry
CALDWELL**

In serving you during the past 4 years, many new and good changes have occurred. Recycling, improved streets, additional water storage. The airport continues to grow and provides jobs for our citizens and youth. We will continue to ensure our city maintains its character and livability. I have worked in Arlington for over 25 years and resided in the city 17. I am married to Karol Baker Caldwell, raised 5 children. I am a member of Our Saviours Lutheran Church, U.S. Navy Veteran, Arlington Masonic Lodge. Currently president of Snohomish County Cities and Towns Association. I need your continued support to improve and maintain our community. Thank you.

A
T

L
A
R
G
E



**Don
REGAN**

Candidate did not submit a statement or a photograph.

UNOPPOSED



City of Granite Falls

MAYOR



**James
RAYMOND**

I have been married for 45 years and have three (3) grown children. I was employed for 42 years driving a truck for the same company. I retired in January 1990. I have served as Mayor of Granite Falls for the past eighteen months which have been very positive.

I feel there are many ways we can improve our City and many projects left to be completed. With your help, we can make Granite Falls a place we can be very proud of to leave to our children. It is my goal to bring activities to our City for the youth, such as a Boys and Girls Club.

I believe Granite Falls should be a community that retains a small town atmosphere with regulated growth. I want to work to improve public services and the local economy.

I hope you will allow me to help you build on the future. Thank you for your consideration.

CAMPAIGN MAILING ADDRESS: P.O. Box 1352, Granite Falls, WA 98252 PHONE NUMBER: 691-4614



**Rella R.
MORRIS**

My priority is to see that the Granite Falls community comes together with a stronger voice in the decisions made by the City Council members.

When someone holds a public office, their main concern should be for the people of their community. Their decisions should be based on what the "people" want and need.

There are many people in our community who cannot always afford "Bigger, Better and Newer." Besides, that is not always the answer.

As Mayor I would be supportive of issues which would benefit both the city and the "people" of Granite Falls, making Granite Falls a better place to live.

I've been a citizen of this community for over 30 years during which time I have attended local schools, raised a family and worked 12 years for the Granite Falls School District.

As an active participant in a variety of issues, my concerns have been for the community as a whole, rather than for the individual.

My experience/participation has included: PTA/PIK, Public School Employees membership, Granite Falls Peace Council, F.O.E. Club, Everett Gospel Mission, local church activities, Alumni Association helper, political campaigns, AWANA Club, G.F. Jr. Athletic Association, and various other community activities.

CAMPAIGN MAILING ADDRESS: P.O. Box 376, Granite Falls, WA 98252 PHONE NUMBER: 691-5739

COUNCIL POSITION 1



**Philip (Doc)
DOCKENDORFF**

I have been married for 36 years and have 2 grown boys. I retired in 1982 from a major retail chain and was in sales and management. I was president of our Community Club and participated in other local activities. I am a member of the American Legion, Granite Falls Eagles, and the local Masonic Lodge.

When I moved to Granite Falls, I was very much interested in the activities of our City Council and when there was a vacancy for a Council position, I was appointed. I have been in charge of City parks and recreation.

My goal is to complete the renovation of our Community Center and my future plans are to improve our parks by increasing the playground equipment, installing a lighted basketball court and tennis court. With the Public's help, we will be able to achieve these goals.



**Hiram S.
WILBURN**

Several old timers feel the same as me about many situations and have asked me to help take corrective action. The paramount problem is the apparent inability of the present city council and mayor to solve local situations at the local level. The situations that need action are 1) Contamination of local water supply, 2) Traffic control on Stanley Street and 3) Surface water control. Only fast action by Senator Quigley prevented the city council from giving our main street to the county or state. The PUD #1 of Snohomish County has proven to be an unreliable source of electricity, yet the present mayor and city council appear to be trying to buy water from Everett and have the PUD install a 12-16 inch water line to our city. This alternate supply will not clean-up the contamination in the city water pipes.

The city has recently acquired a "mosquito farm" (swamp) behind the Eagles Club parking lot. In addition to mosquitoes, the swamp is very attractive for skunks and coyotes. Apparently the town would have the financial responsibility for the death of a child who drowns in the swamp or is bitten by a rabid skunk or coyote??

CAMPAIGN MAILING ADDRESS: P.O. Box 43, Granite Falls, WA 98252 PHONE NUMBER: 691-5119

City of Granite Falls Council



P
O
S
I
T
I
O
N

2



Candidate did not submit a statement or a photograph.

**Paul R.
BILBRUCK, SR.**



I believe we need new blood pumping through the city government of Granite Falls, and as a citizen of Granite Falls, I want to be a part of that transfusion. I believe that what's fair for one is fair for all.

If elected to the City Council, I will have an open phone line (at my residence) so I can be available to listen to any ideas, complaints, and concerns from the citizens of this community.

I have lived in the city of Granite Falls for seven years and in the Granite Falls area for twenty-eight years. Experience? . . . NONE . . . THE SAME THAT THE CITY COUNCIL MEMBERS HAD BEFORE "THEY" WERE ELECTED.

CAMPAIGN MAILING ADDRESS: P.O. Box 328, Granite Falls, WA 98252 PHONE NUMBER: 691-5618

**Reece
MORRIS**

P
O
S
I
T
I
O
N

3



Candidate did not submit a statement or a photograph.

**Thomas R.
BERGAN**

UNOPPOSED



City of Granite Falls Council

P
O
S
I
T
I
O
N

4



**Keith
KENWORTHY**

My name is Keith Kenworthy. I have lived in the Granite Falls area since 1983, and graduated from Granite Falls High School. I'm employed by the Boeing Company as an aerospace mechanic. My community service activities include, being a member of the Vocational Advisory Council, for the Granite Falls school district, representing the Industrial Arts Program. The other activity that I enjoy, is being a volunteer, reserve police officer. I've been with the Granite Falls Police Department since 1990. As a taxpaying American, one of my most important goals, is to get the best quality of services, for the least amount of money. With input from the community, we can work on the services that most need improvement. An issue that is also very important to me is growth. I would like to do my part to ensure a balance between growth, and preservation of the quality of life in Granite Falls. Thank you for all of your support.

CAMPAIGN MAILING ADDRESS: P.O. Box 1531, Granite Falls, WA 98252 PHONE NUMBER: 691-4247

UNOPPOSED

P
O
S
I
T
I
O
N

5



**Leon D.
GOFF**

Candidate did not submit a statement or a photograph.



**Edward E.
STEMLER**

My wife Kristi and I live in Granite Falls because we want to raise our two daughters in a small, close-knit community. We like the friendly, safe atmosphere where we can be comfortable with our children walking to school. As a city council member I will help insure that as Granite Falls faces new challenges, it maintains those important qualities we all value.

I am dedicated to public service. I enjoy my career as a deputy prosecuting attorney because in that role I am part of the solution. I help hold people accountable when they do things that hurt others in our community. The demands on a deputy prosecutor are many and varied. I bring to my job strong organizational skills and a powerful sense of purpose. I'm constantly balancing the needs and expectations of the community, the victim, law enforcement, the defendant, and the courts.

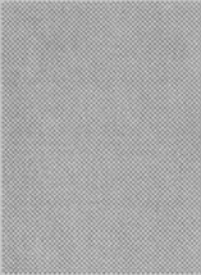
As a city council member I look forward to using my skills on a broader range of challenges. Growth management and fiscal responsibility are the key issues facing our city. My bottom line on solving problems will be finding the best answer for Granite Falls after fairly considering all sides of the issue.

CAMPAIGN MAILING ADDRESS: P.O. Box 1291, Granite Falls, WA 98252 PHONE NUMBER: 691-7915

City of Stanwood



M
A
Y
O
R



Candidate did not submit a statement or a photograph.

**Cliff
STRONG**



**Donald
MOA**

Having served as Councilman and Mayor, I feel I have the experience to guide and give the kind of leadership needed, for an effective governing body, to control growth and direction for the City of Stanwood. Stronger controls on the day to day operations as we learn to do more with less by being more efficient.

CAMPAIGN MAILING ADDRESS: 27309 SR 530, Stanwood, WA 98292 PHONE NUMBER: 629-3168

C
O
U
N
C
I
L

P
O
S
I
T
I
O
N

1



Candidate did not submit a statement or a photograph.

**Matthew J.
McCUNE**

UNOPPOSED



City of Stanwood Council

P
O
S
I
T
I
O
N

2



**Robert S.
LUNN**

I believe in satisfying the desires of the majority whenever possible while being aware of the needs and desires of the minority. I believe in planned growth and development providing senior housing, affordable housing for all low income families and large lots for single resident families. I would like to preserve green spaces such as parks and recreational areas and I would like to encourage development of safe roads, clean water and flood control as well as fair and firm application of police activities to provide a secure and safe environment.

UNOPPOSED

P
O
S
I
T
I
O
N

4



**Barbara
GSTOHL**

Barbara is a long-time resident of Stanwood. She was employed by the Stanwood School District as office manager of Stanwood High School for 25 years and served two terms as president of the local Public School Employees Union.

Barbara served on the Stanwood Planning Agency and is one of three representatives of the City of Stanwood on the Growth Management Coordinating Committee. She is currently serving on the Stanwood City Council, having been appointed in February of this year. Talent, hard work, and experience combine to make Barbara an effective member of the council.

Barbara is an accessible person who knows how to listen and act on the concerns of others. Her goal is to serve the citizens of Stanwood in this critical period of growth.

CAMPAIGN MAILING ADDRESS: P.O. Box 146, Stanwood, WA 98292 PHONE NUMBER: 629-3234

UNOPPOSED

Arlington School District No. 16, Director



D
I
S
T
R
I
C
T

3



**Carolyn
ERICKSON**

As an ACE (Advisory Council for Education) member, and frequent school board meeting attendee, I feel that a new and positive direction is not only needed but necessary for the Arlington School District to grow and evolve. My goal is to open the lines of communication within the school board, and the community. Through open communication and hard work, I believe we can make the Arlington School District a model that other districts will envy.

CAMPAIGN MAILING ADDRESS: 25201 SR 9 NE, Arlington, WA 98223 **PHONE NUMBER:** 435-9312



**Charles L. (Chuck)
THURMAN**

My family and I exhibit our beliefs in quality education. Our children attend Arlington schools. My wife and I help in class, on field trips, concerts, and cleaning up after events. I have been active with Bond/Technology committees, 2 PTA's, Science/Art/Cultural fairs, Arlington Parents of Eagles Group, Special Services Review, Boys and Girls Club, Boy Scouts, Kiwanis, International Brotherhood of Electrical Workers, Secretary/Treasurer of GFATHA (homeowners association). I regularly attend School Board meetings.

Arlington has well addressed some issues. However, our work is unfinished. Needing further attention: growth, facilities, graduation requirements (Are students prepared for the real world?), curriculum, technological advances, funding, etc.

As Training Coordinator for PUD, I understand needing good customer service, and being accountable to the public. It's important to listen and consider all sides prior to making decisions - I'm open-minded and outspoken, experienced at budget preparation and administration, and possess the ability to analyze and make responsible decisions.

Let's ensure our students receive the best education we can provide, which enables them to better function in a complex and competitive world. Without community and District employees working together we truly cannot expect to obtain our goals.

CAMPAIGN MAILING ADDRESS: 25823 70 AV NE, Arlington, WA 98223 **PHONE NUMBER:** 435-8528

D
I
S
T
R
I
C
T

5



**Rod R.
BECKMEN**

The district has come to a crossroads with no plan as to the direction it will take to proceed in the educational development of the children and young adults of our community. I have recently become a passenger of this district's vehicle, the school board of directors, and am now aware of the problems that must be dealt with immediately to enable this district to grow and properly address our youth's educational needs. These problems center around three major issues: communication, facilities, and curriculum. Communication must improve between the board members, the board and administration, and the board and the community. Without strong communication and open lines the planning process will stagnate and progress will stop at the crossroads. Facilities planning must be addressed as we are already seeing the results of improper planning with outdated buildings, excessive use of portables, and facilities unable to provide an atmosphere conducive to learning. Curriculum requires constant review and updated to maintain levels that allow our children to develop the skills necessary to compete in the college and job arena's. With the correct road map that can be developed thru communication, the "district's vehicle" will make the proper decision at the crossroads.

CAMPAIGN MAILING ADDRESS: 7119 168 ST NE, Arlington, WA 98223 **PHONE NUMBER:** 435-2048

UNOPPOSED



Marysville School District No. 25, Director

D
I
S
T
R
I
C
T

1



Candidate did not submit a statement or a photograph.

**Donald C.
HATCH, JR.**

UNOPPOSED

D
I
S
T
R
I
C
T

4



Candidate did not submit a statement or a photograph.

**Victoria
GRAVES**



**Helen M.
MOUNT**

I have been associated with the Marysville School District for many years, first as a student, then an employee. In the mid 1960's I worked as a Secretarial aide. Later, while attending University, I worked in the Head Start program.

A graduate of Central University, with a major in psychology and minor in education, I spent 14 years in the mental health field.

A strong advocate for youth and education in our community, I have done volunteer work at the alternative learning center and Shoultes Elementary; been involved with young people as an Advisory Board Member and Mother Advisor for the Order of Rainbow for Girls; den mother in Cub Scouts and 5 years as committee member/treasurer for Marysville's Troop 84 Boy Scouts of America.

My education and experience make me uniquely suited for the school board position. My philosophy is simple, in order for the educational system to work an atmosphere must be established in which students want to learn, teachers want to teach and parents choose to be involved.

Mother of one, recent Eagle Scout Eric, I manage our family corporation, Century 21 Market Place. My husband, Herman is a police officer for the city of Marysville.

CAMPAIGN MAILING ADDRESS: 3704 172 ST NE, Suite H-I, Arlington, WA 98223 PHONE NUMBER: 659-0871

Lakewood School District No. 306, Director



D
I
S
T
R
I
C
T

1



**Nancy K.
BARTON**

(UNOPPOSED)

A positive educational experience is vitally important for all students. With a growing student population compounded by limited revenues, I encourage parents, staff and community to work together in creating innovative solutions to difficult problems. This can be done by listening to others, sharing information objectively, encouraging people to develop their capabilities and treating them with respect and fairness.

I am committed to implementing the action plans developed in Lakewood's strategic planning process by teams of parents, community members, and staff. This participatory effort has established the direction of the Lakewood school district into the 21st century. I am also committed to promoting and maintaining productive two-way channels of communication between school and parents, attracting and retaining highest quality staff, effecting a smooth transition into new schools, and practicing sound fiscal management.

CAMPAIGN MAILING ADDRESS: 17908 31 DR NE, Arlington, WA 98223 PHONE NUMBER: 653-1973

D
I
S
T
R
I
C
T

2



**Roger A.
PLAUTZ**

(UNOPPOSED)

Candidate did not submit a statement or a photograph.

D
I
S
T
R
I
C
T

3



**Kenneth P.
HERMANSON**

(UNOPPOSED)

Candidate did not submit a statement or a photograph.



Granite Falls School District No. 332, Director

D
I
S
T
R
I
C
T
1



**Mary J.
BAKKO**

My husband Marvin and I have lived in the Granite Falls school district since we were married in 1971. We have two daughters, both have been educated in the Granite Falls school system.

We are both members of the Granite Falls Lions Club.

I have been active in 4H for 8 years. At this time I am club leader for the Rancheros 4H Club.

I believe in keeping our youth involved in activities that will cause them to become productive adults.

The Granite Falls School Board has charted a course these past four years that will greatly improve the ability of our students to complete graduation.

A Strategic Plan has been set in motion that gives the district a sense of direction and a plan for the future.

Voters recently approved a technology levy that will give students the advantages they will need as adults.

The greatest challenge facing the district is the construction of a second elementary school and remodeling of the middle school and high school.

I have been fortunate to be a part of this forward thinking Board and hope you will support my election so I may continue to work for the improvement of our schools.



**Richard W.
SHORT**

Candidate did not submit a statement or a photograph.

D
I
S
T
R
I
C
T
3



**Dennis J.
STEVENS**

Candidate did not submit a statement or a photograph.



**John W.
MORRISON**

The ultimate responsibility for the performance of the Granite Falls School District lies with its elected Board of Directors. This responsibility should not be taken lightly by the directors nor the citizens they serve.

If school boards are ever going to be held accountable, a set of definite understandable performance standards for the district will have to be created. If we do not define specifically what we expect of students upon graduation how can we ever hope for accountability. If we do not adequately track dropouts how can we ever hope for improvement.

It will be my goal, in the next 4 years, if elected to help set performance standards upon which the board can be held accountable. Once these standards are set then the district should report on its progress in meeting these to the community. Its not good enough to say we want quality education for our children. We must and we will be more specific.

CAMPAIGN MAILING ADDRESS: 13005 279 AV NE, Granite Falls, WA 98252 PHONE NUMBER: 691-6178

Granite Falls School District No. 332, Director



D
I
S
T
R
I
C
T

4



**Ronald
ORTA**

Since my family and I moved to the Granite Falls area in 1985, we have seen the Granite Falls School District continually expand to accommodate the influx of new residents to the area. My son started school at Mountain Way Elementary when it opened its doors.

Since then, the growth trend of the school district continues with plans for a new school to be built. The board will also be selecting a new superintendent. I feel a need to avail myself in a positive manner toward the contribution of quality education within the Granite Falls School District. I feel that continued strong leadership on the school board is necessary to ensure the present and future needs of the district in order to continue quality education within its schools.

As a member of the school board, I feel I can work to provide that leadership which will be needed to meet the challenge of providing our youth with the quality education they will need to face the future.



**Robert A.
QUARTERMAN**

Candidate did not submit a statement or a photograph.

D
I
S
T
R
I
C
T

5



**Craig H.
EMERY**

Candidate did not submit a statement or a photograph.

UNOPPOSED



Stanwood School District

No. 401, Director

D
I
S
T
R
I
C
T

1



Candidate did not submit a statement or a photograph.

**Cliff W.
HENNING**

UNOPPOSED

D
I
S
T
R
I
C
T

3



**Susan M.
COLE**

My nine years of experience on the Stanwood School Board will allow me to continue to help provide the quality education we now have in Stanwood.

My experience locally and legislatively will enhance the ability of our School Board to respond to mandates from the legislature and voters.

"Doing what's best for kids" will be my focus.

CAMPAIGN MAILING ADDRESS: P.O. Box 1665, Stanwood, WA 98292 PHONE NUMBER: 629-2831



**MaryBeth
FISHER**

I am running for the Stanwood School Board because I have a commitment to provide my children and all children of the District with a quality education. I want to provide the District with a strong new voice committed to listening to parents and making improvements in communications among parents, teachers, the school board and administrators. I am convinced that the single most important component of any child's education is the parent. I believe effective communication enhances education.

I am a life long resident of Camano Island. My husband John and I have two children in elementary school.

My business background and community activities have helped me prepare for service to the Stanwood schools. I am the Operations Officer at a local bank and I have experience in budget and personnel management. I am a member of the Administrative Board of the Stanwood United Methodist Church. I also serve on the Stanwood High School Vocational Business Advisory Board. As a member of this Board I realize the importance of vocational training. High schools should strive to prepare students to enter the job market as well as to prepare their entry into college.

CAMPAIGN MAILING ADDRESS: 366 E MacBae DR, Camano Island, WA 98292 PHONE NUMBER: 387-1533

Fire Protection District No. 14



P
O
S
I
T
I
O
N

1



Candidate did not submit a statement or a photograph.

**Jack A.
STEDMAN**

UNOPPOSED

P
O
S
I
T
I
O
N

3



**Carl A.
KOCH**

I have lived in this community for forty-seven years. I spent seventeen years as a volunteer firefighter, twelve of those years were as an emergency medical technician. I am a commissioner of Fire District 14 at this time. I feel I have worked for the betterment of this community as a volunteer firefighter and as a commissioner. I would deeply appreciate serving on this board for another term. Our district covers fifty-two square miles. We have a fire station at each end of our district. We totally encompass the City of Stanwood. We contract with the City of Stanwood to assist in our services. We have one pumper and one tanker housed in the Stanwood fire station.

I have watched this community grow and have seen some major changes in the fire service in the last ten years. Our calls have increased quite dramatically.

We, as commissioners, have to make sure our volunteer fire departments get the funds to train our fine firefighters and equipment in which to respond to these emergencies. I am proud to be associated with this community and our volunteer firefighters.



**Pat
COTTRELL**

I have lived in Fire District 14 for the last sixteen years. During that time I have served the community first as a Scout leader in troop 86 for four years, then for the next eleven years as a member of the District. I have also been a part of the business community for the last ten years, owning and operating a business in west Stanwood.

During my years as a member of the District I have held the positions of trustee (chairman of the board) and medical coordinator at station one. After moving to Warm Beach I held the positions of trustee, lieutenant, Captain in charge of training, and Captain in charge of medical at station two. I have served on committees and also teach first aid and CPR.

I feel that our District has become stagnant and it is time for a change. We have no goals or visions and lack any kind of future planning. Our District suffers from financial problems, dissension, and morale problems. The time has come to do something instead of sitting back and complaining. I encourage your vote in the November election and invite you to call me if you have any questions.

CAMPAIGN MAILING ADDRESS: P.O. Box 1793, Stanwood, WA 98292 PHONE NUMBER: 652-7058



Blue Spruce Grove Water District

P
O
S
I
T
I
O
N

2



**Raymond W.
EARLY**

I am interested in maintaining and improving our water system. I will work to provide the best possible water quality as efficiently and inexpensively as possible for each household. I am interested in water conservation and preservation, our pending merger with Rainbow Springs, pending hook up with the Snohomish County P.U.D. pipeline from Lake Stevens and the potential effects on our water system from the proposed Associated Sand and Gravel Rock Quarry (i.e. arsenic and other chemical contamination, increased sand and dirt that effects our filter system). I have been a resident of Blue Spruce since the spring of 1992 and am a member of the Board of Trustees of Blue Spruce Grove Community Club, Inc. I am a native of Washington, a graduate of W.S.U. class of '72, Veteran of 7-1/2 years of Regular Army Service with an Honorable Discharge for medical purposes. I am currently employed by the U.S. Postal Service as a semi-tractor trailer driver in Seattle.



**Fran
HAMLIN**

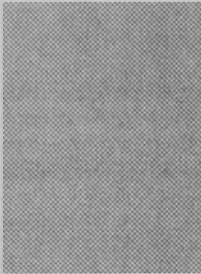
I have worked for the Water System since 1979. I started out learning how to run the system and ran it until 1985 when we became a Water District. I have held the position of Commissioner and have been in charge of Maintenance and Operations ever since. At the time I started working with the system we had 20 homes—we now have 190 homes served by our Water District.

Hospital District No. 3



D
I
S
T
R
I
C
T

2



**Judy
DELLWING**

As a Commissioner of Public Hospital District #3 for the past four years I have worked to assure the availability of quality health care services to district residents.

I am currently Chairperson of the Board and chaired the Board's Finance Committee for three years. I am proud of the high quality services provided to the citizens of the district as well as our ability to keep costs very competitive.

My goal for the future is to work together with our Board of Commissioners and the medical community to ensure that the communities in the hospital district have local services available as health care reform becomes a reality.

UNOPPOSED

P
O
S
I
T
I
O
N

5



**Mary Jean
KRASKI**

I have been affiliated as a volunteer with the Hospital District for the past eight years serving on the Advisory Board to the Board of Commissioners from 1985 to 1990. I was appointed to complete a term on the Board of Commissioners in 1988 and have represented the Board as Chairman of the Quality Assurance Committee. I have also been active in budgeting and strategic decision-making for providing health services to the residents of North Snohomish County.

I believe the health care system should be considered a good value and high quality. I am proud of our hospital district's quality, cost effective system and the expanded health services available in North Snohomish County.

UNOPPOSED



City of Granite Falls

Explanatory Statement

BALLOT TITLE

PROPOSITION NO. 1 LIBRARY SERVICE

Shall \$25000.00 in excess property tax (approximately \$.47 per \$1000.00 assessed value based on 100% true and fair value) be levied in 1993 for 1994 collections for Library Service in the City of Granite Falls?

Granite Falls Proposition No. 1 asks voters to approve \$25,000.00 payable by special tax levy against real property. The special tax levy will be approximately \$.47 per \$1000.00 assessed value based on 100% true and fair value. The proceeds from said special levy will be used for the following purpose:

Library Service in the City of Granite Falls for the year 1994.

Passage of Granite Falls Proposition No. 1 requires a 60% majority with the total of all votes cast equal to at least 40% of the number of votes cast with Granite Falls in the 1992 general election.

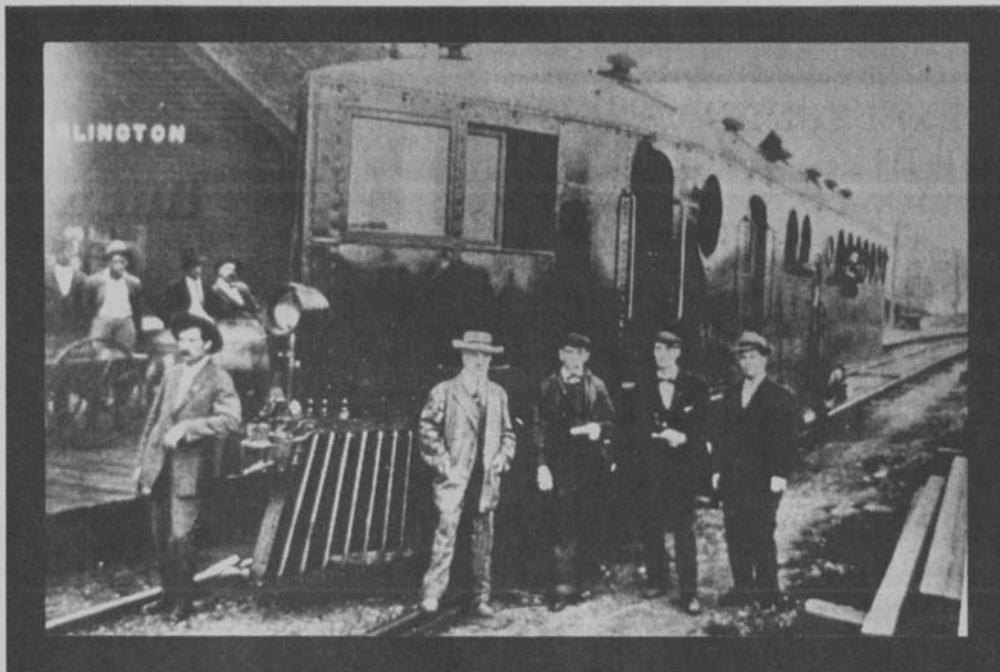
Statement for

NO STATEMENT SUBMITTED.

Statement against

NO STATEMENT SUBMITTED.

Rails Northwest Centennial . . .



A McKean design gas-powered engine in Northern Pacific service at the Arlington depot (ca. 1909-1911).

Prior to the coming of rail transport, Snohomish County was a vast, timbered land, accessible primarily by the water along Puget Sound and up several river valleys to the foothills of the mountains. The prime resource in the 1880's was timber and as forests were cut farther and farther back from water's edge, logging railways were put in place to transport logs to the waterways. Logs and shingle bolts were hauled to local mills or floated downstream to large mills and sailing ships for export.

The earliest logging railways were often simply wooden rails to ease the pulling of logs by horse or oxen teams. Profits were put away to order steel rail and a locomotive which would be delivered by barge. Eventually county maps showed dense, spidery networks of over 135 separate rail logging operations.

Also in the 1880's surveying was underway by major rail companies for lines which could serve passengers and freight as well as be "fed" from feeder lines of the many log operations. The Northern Pacific Railway had completed its transcontinental line to Tacoma in 1883 and numerous rail plans were laid by disappointed Seattle capitalists to create their own railways to serve north-south routes. Thus, the Seattle, Lakeshore and Eastern ran its first train up to Snohomish in 1888 and continued building northward. Eventually the Northern Pacific took over that line and served the remote northeastern town of Darrington.

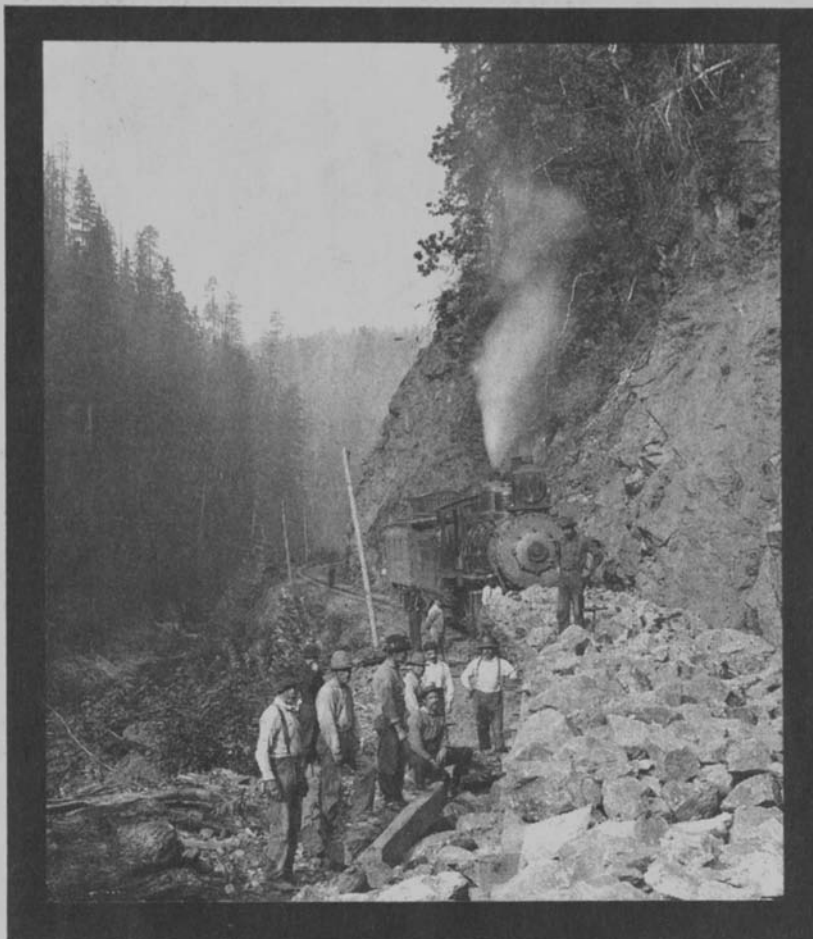
Of most import to Snohomish County was completion of the transcontinental line of the Great Northern Railway in 1893. Everett fought to be the terminus of that line with the argument that it would be a great city with an economy fueled by mining riches hauled to its smelter via the new Everett and Monte Cristo Railway being built in 1892-93 along the S. Fork Stillaguamish River. However, Seattle won out as terminus, and the Great Northern came across Stevens Pass, turned south at Everett along the coastline of its earlier company, the Seattle and Montana Railway, and served the towns of Mukilteo and Edmonds as it headed for Seattle.

From Everett, the Great Northern also headed north along the Seattle and Montana route, serving Marysville and Stanwood where it placed its station one mile east of the main part of town. This resulted in an East and West Stanwood and in the establishment of the shortest line in the world, the one-mile Hall & Hall Railway, to haul passengers and freight to and from the station.

Another type of railway, the electric Interurban, operated between Everett and Seattle from 1910 to 1939. It offered the first "commuter rail" option in the area with numerous stops along the line, 55 mph speed on the straight-of-way, and the ability to run slowly and stop often within the cities.

The Milwaukee Railway was the last major line to be established in Snohomish County. A relative late-comer in the 1920's, it served the county coming north from Duvall, through Monroe and then on into Everett along the Snohomish Valley. Thus, railroading in Snohomish County has been diverse for over 100 years with great impact on the citizens and on their economy. The future of rail is a matter of ongoing discussion!

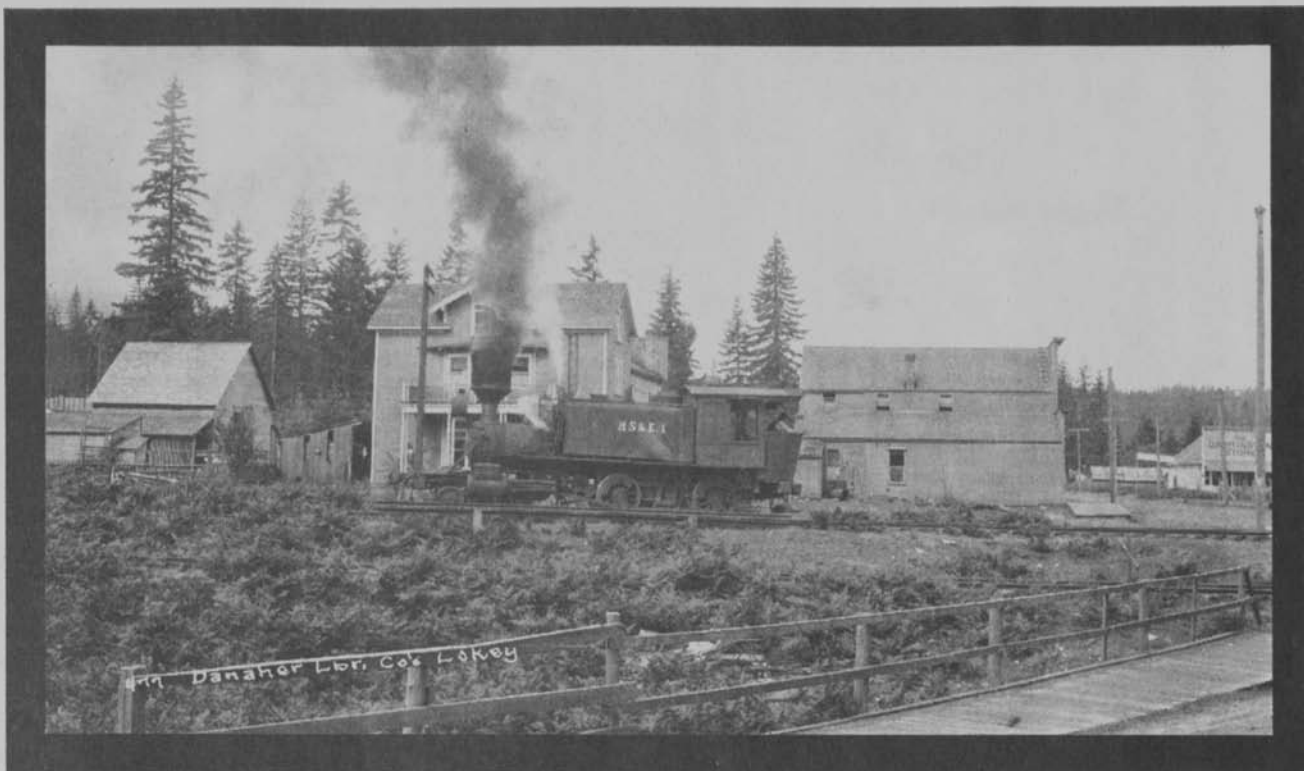
Celebrating 100 Years of Railroads . . .



1892: Construction on the Everett & Monte Cristo Railway through Robe Canyon, S. Fork Stillaguamish River.

The Hall and Hall Railway
(the H & H Railway) a
one-mile rail line built in
1904, linked East and
West Stanwood.

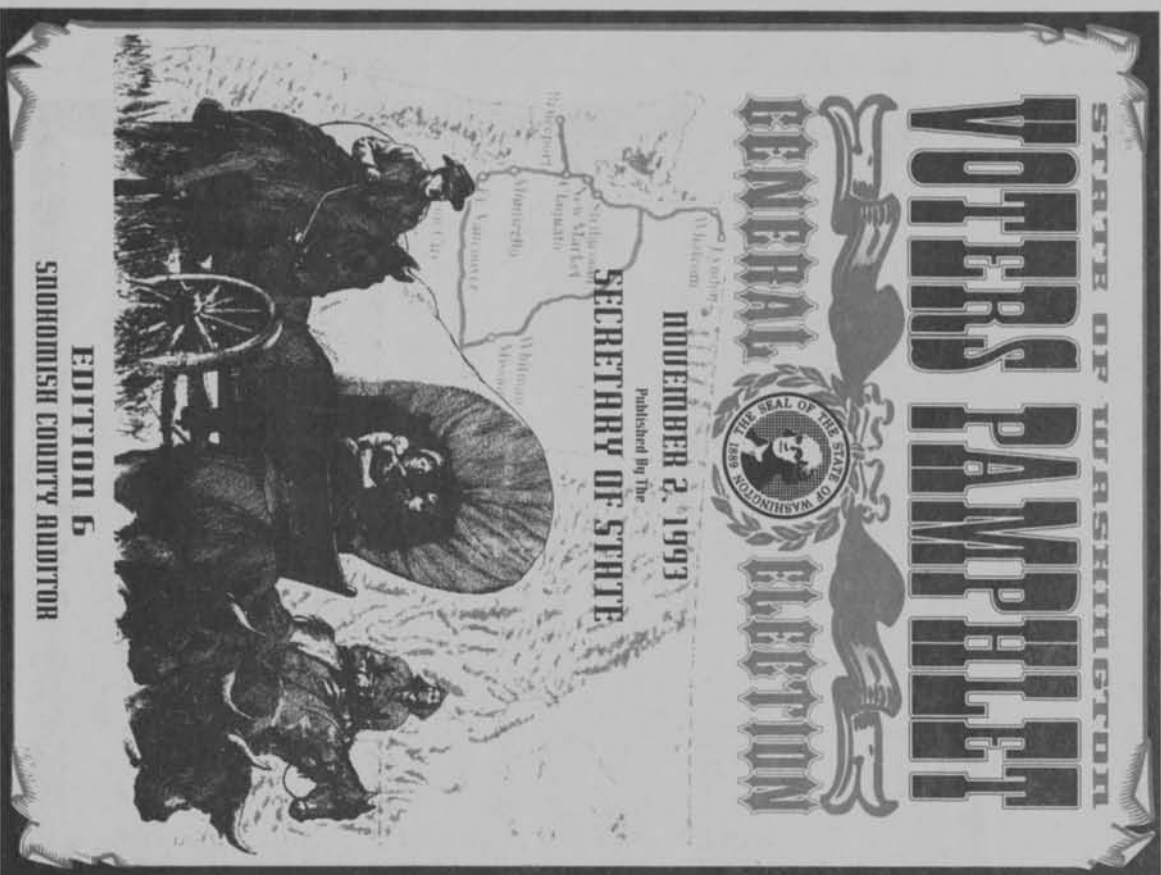




Danaher Lumber Mill locomotive in downtown Darrington (ca. 1913-1916).



New Lima Shay Locomotive from Sound Timber Company, Darrington (ca. 1913-1916).



BULK RATE
U.S. POSTAGE
PAID
SEATTLE, WA
PERMIT NO. 1216
CAR RT. PRESORT

RESIDENTIAL PATRON, LOCAL

EDITION 6

98223 98241 98252 98259 98287 98292