



Do you have questions or ideas
on how we can improve our
services to your community?

Contact us!



1 (800) 448-4881



sos.wa.gov/elections



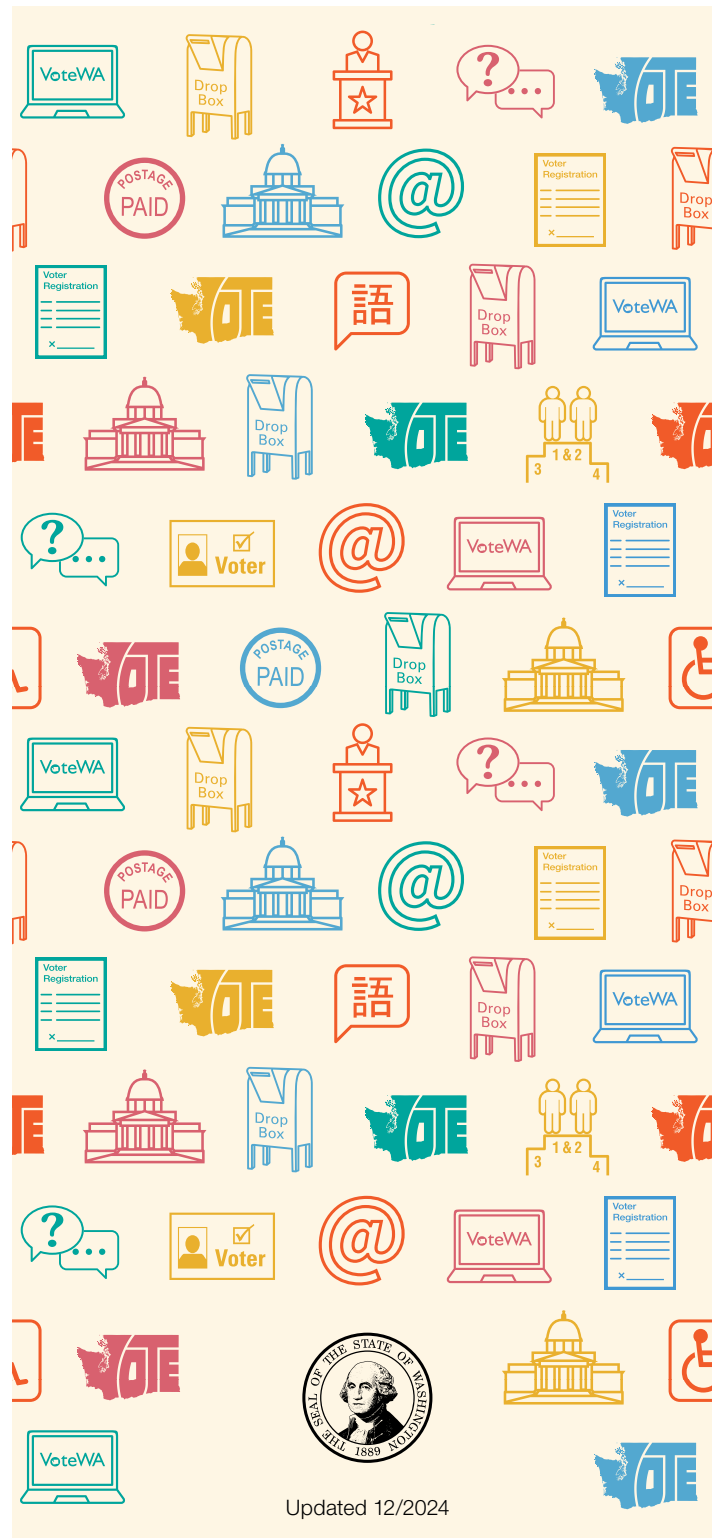
elections@sos.wa.gov



@secstatewa



@WaSecretaryOfState
@WashingtonStateElections

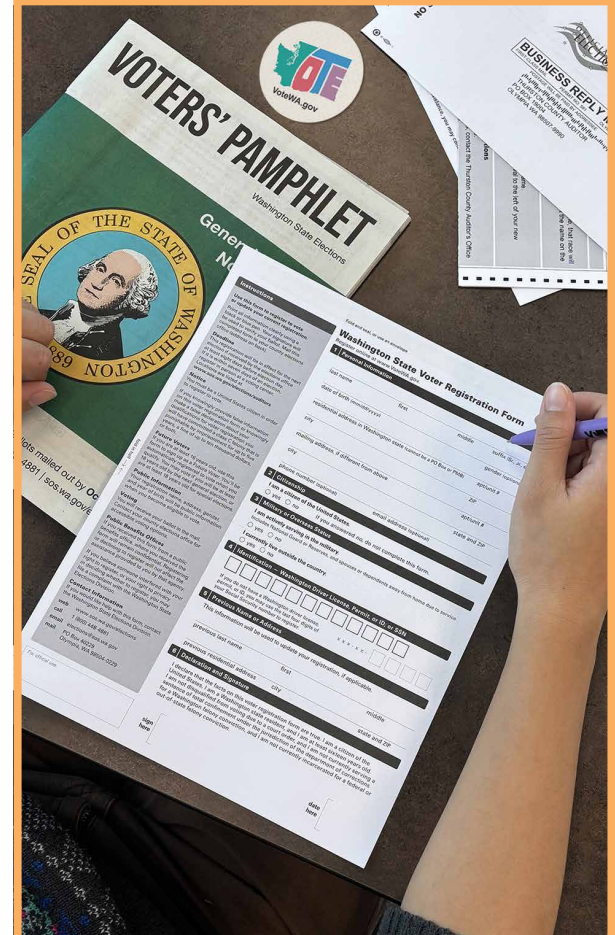


Updated 12/2024

English

Voting in Washington State 2025

"The vote starts with you!"



Office of the
Secretary of State
Elections Division

Important Dates

2025 Elections

Visit sos.wa.gov/elections for more details.

Feb
11

Special
Election

Apr
22

Special
Election

Aug
5

State
Primary

Nov
4

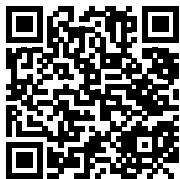
General
Election

We make it simple and secure.

Voting for the first time in Washington?

Welcome to Washington! Register or update your information online at VoteWA.gov, by mail, in person, or when you get your new state driver license, permit, or ID at the Department of Licensing.

You may not vote in multiple states. Be sure to cancel any previous voter registration before you register in Washington.



Washington voters do not register by party affiliation.

Voting Step-by-Step



Qualifications

To vote, you must be at least 18 years old, a U.S. citizen, a resident of Washington, and not currently serving a sentence of total confinement in prison for a felony.

Register to vote

You can register online at VoteWA.gov, by mail, or in person at your local elections office.

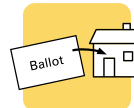


If you are 16 or 17, you can sign up as a Future Voter and be automatically registered to vote when you qualify. If you will be 18 by the November Election, you can vote in the Primary Election.



Receive Voters' Pamphlet

Mailed to every household in Washington state for the General Election, use this tool to make informed decisions on candidates and measures. It should arrive before your ballot. View your personalized Online Voters' Guide at VoteWA.gov.



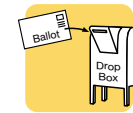
Check your mailbox

Your ballot will be sent out 18 days before election day. Military and overseas ballots are sent 45 days before election day. Accessible Voting Units (AVUs) are available at county voting centers.



Vote your ballot

Vote your ballot and sign your return envelope. You are not required to vote every race on your ballot.



Vote by mail

Prepaid postage included! Mail your ballot back to your county elections office postmarked on time or drop it into a local drop box no later than 8 p.m. on Election Day. Find a list of drop boxes and voting centers at VoteWA.gov.



If you cannot personally return your ballot, let only people you trust deliver it for you.

Check the status of your ballot

Check the status of your ballot on VoteWA.gov to see if it has been received by your county elections office.



Election staff will contact you before your ballot is processed if:

- Your signature is missing
- Your signature doesn't match your voter registration record

Want to receive text updates on the status of your ballot? Text "VOTE" to 868392 to get a link to sign up. Message and data rates may apply.