

A Guide to Late Transfers in the Same Day Registration (SDR) Environment

The following guide describes procedures for ballot processing “edge-cases” in the SDR environment. Most late transfers will result in one of two “happy path” scenarios, but sometimes it will be harder to decide which ballot to accept and when.

Our goal is to count the most recent ballot issued to a voter, for their current registration. When that ballot cannot be accepted, it may still be possible to credit voters using a suspended ballot (these are called *cancelled ballots* in VoteWA) from their previous registration. Following the steps in this guide will result in fewer rejected ballots.



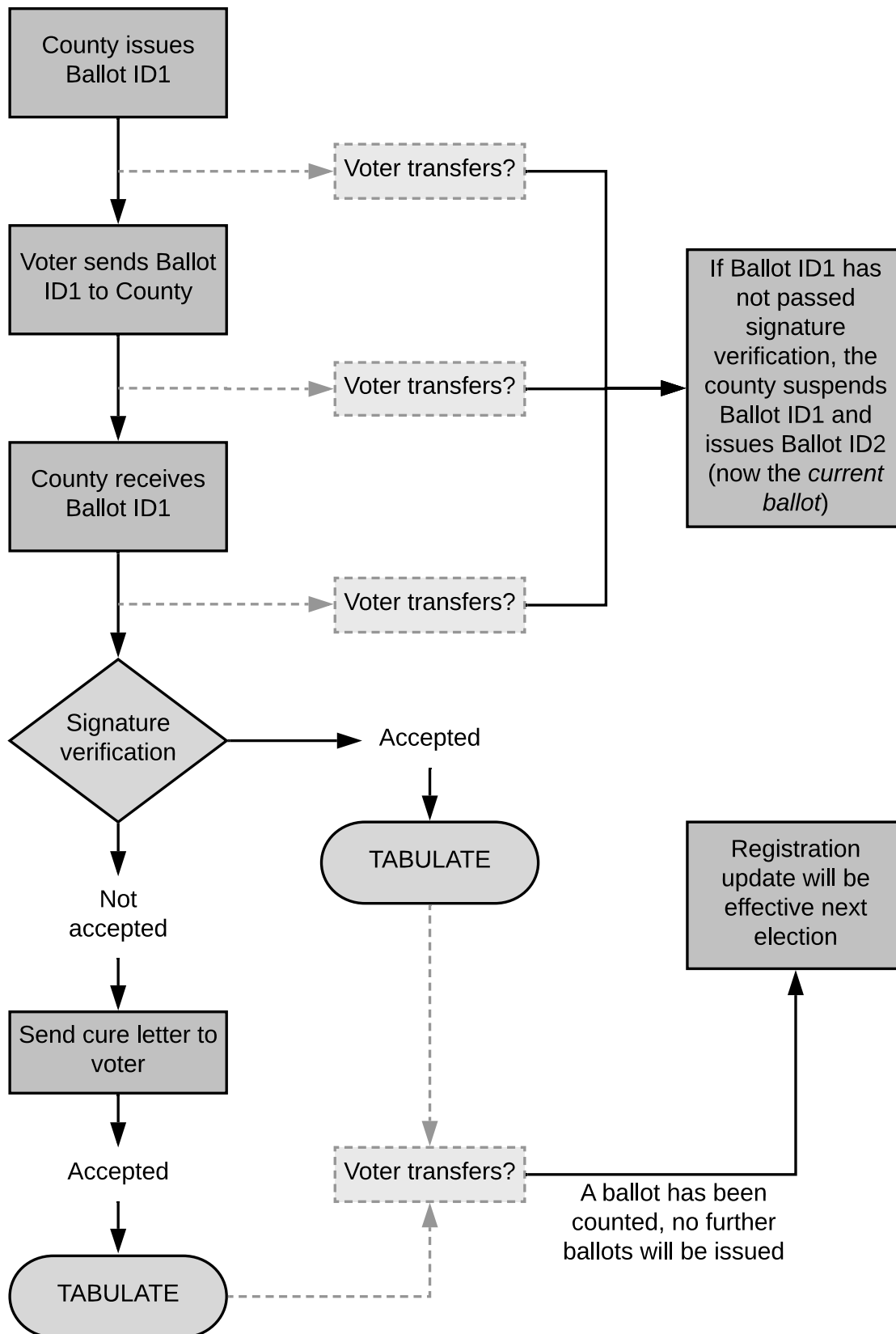
Secretary of State

Tim Wyman

Table of Contents

Overview of Same Day Registration (SDR) Policy	3
“Happy Path” 1, current accepted	4
“Happy Path” 2, current accepted	6
Current ballot not returned 1, suspended is restored, no signature pre-check	8
Current ballot not returned 2, suspended is restored, with signature pre-check	10
Current ballot not returned 3, suspended is restored, no signature pre-check	12
Current ballot not returned 4, suspended is restored, with signature pre-check	14
Current ballot challenged 1, current is accepted, no signature pre-check	16
Current ballot challenged 2, current is accepted, with signature check	18
Current ballot challenged 3, suspended is restored, no signature pre-check	20
Current ballot challenged 4, suspended is restored, with signature pre-check	22
Both ballots challenged 1, current is accepted, with signature pre-check	24
Both ballots challenged 2, suspended is restored, with signature pre-check	26
Both ballots challenged 3, suspended is restored, no signature pre-check	28
Overview (“master” flow chart)	30
Glossary of SDR terms	31

Overview of Same Day Registration (SDR)
policy: a voter may update a registration until
their ballot has been accepted for tabulation



"Happy Path" 1
current accepted



GIVEN the voter has initiated a transfer during the voting period

AND the voter has already been issued a ballot

THEN the county reissues a ballot to the voter for their new precinct (this is the current ballot)

AND the original ballot issued to the voter becomes a suspended¹ ballot

WHEN the county receives the current ballot

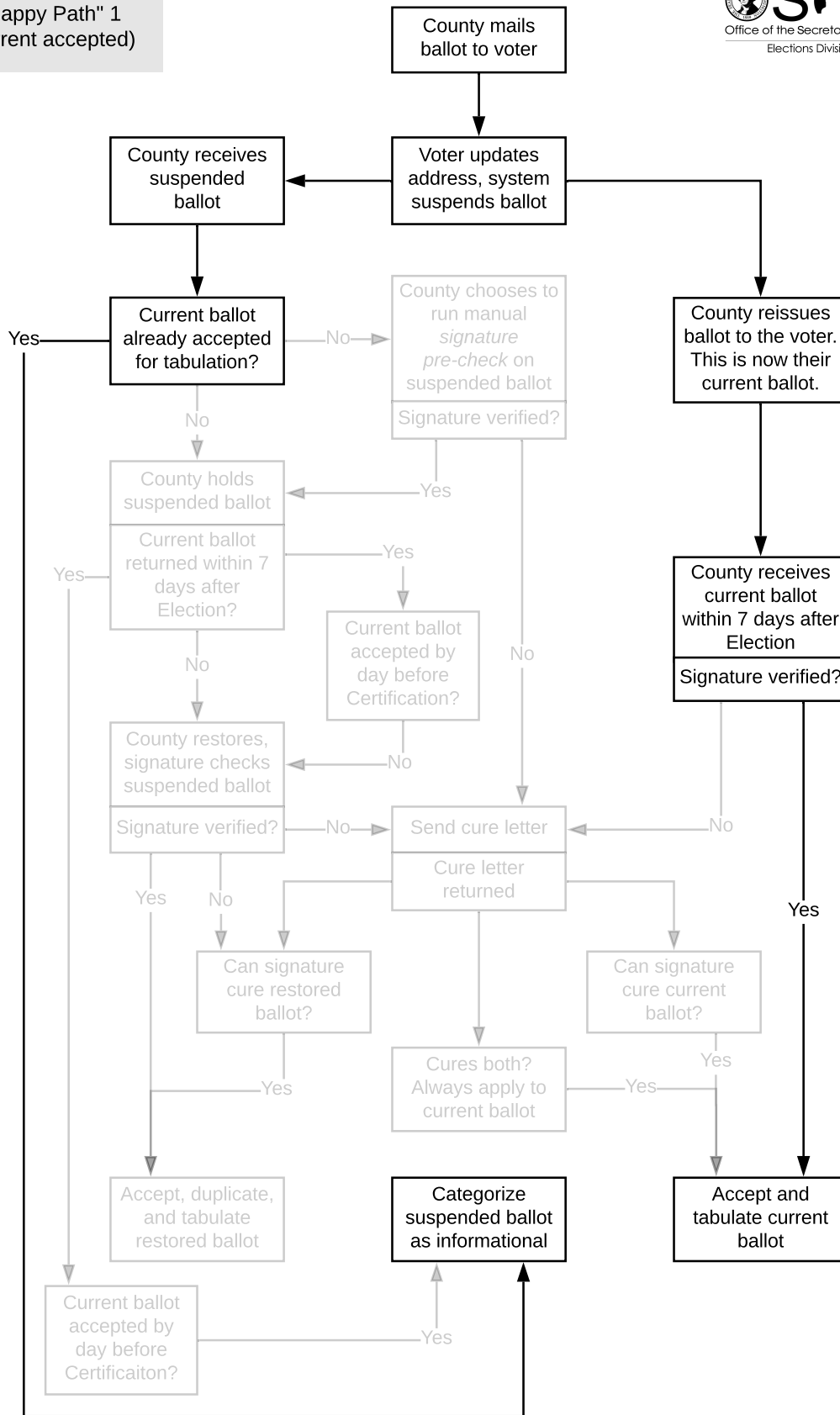
AND the current ballot is signature verified

THEN the county accepts and tabulates the current ballot

WHEN the county receives the suspended ballot

THEN the county categorizes the suspended ballot as an informational ballot (it does not reject the ballot)

"Happy Path" 1
(current accepted)



"Happy Path" 2
current accepted



GIVEN the voter has initiated a transfer during the voting period

AND the voter has already been issued a ballot

THEN the county reissues a ballot to the voter for their new precinct (this is the current ballot)

AND the original ballot issued to the voter becomes a suspended ballot

WHEN the county receives the suspended ballot

AND the county has not yet accepted the current ballot

THEN the county holds the suspended ballot for 7 days after the election

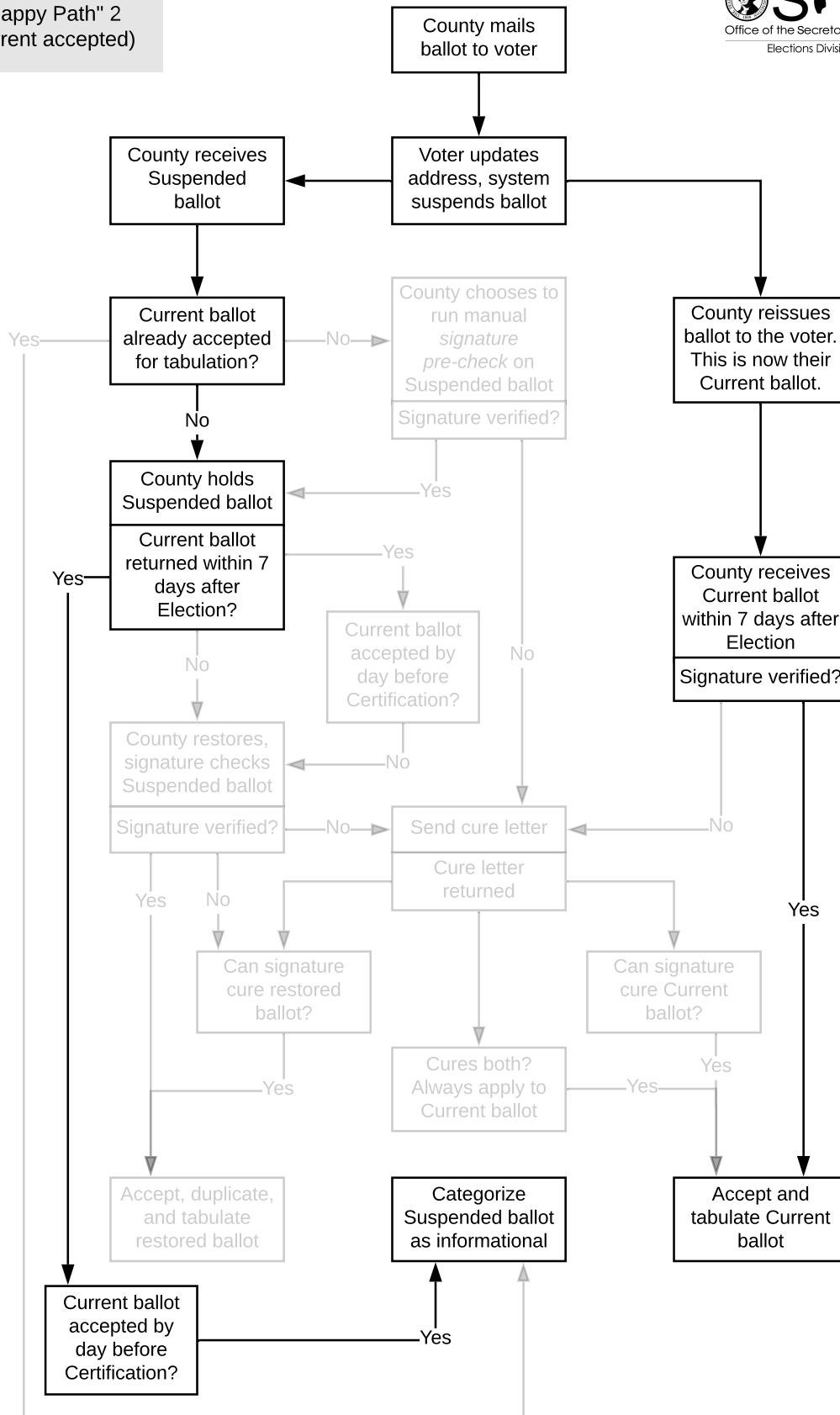
WHEN the county receives the current ballot within 7 days of the election

AND the current ballot is signature verified

THEN the county accepts and tabulates the current ballot

AND the county categorizes the suspended ballot as an informational ballot (it does not reject the ballot)

"Happy Path" 2
(current accepted)



Current Not Returned 1

suspended is restored
(no signature pre-check)



GIVEN the voter has initiated a transfer during the voting period

AND the voter has already been issued a ballot

THEN the county reissues a ballot to the voter for their new precinct (this is the current ballot)

AND the original ballot issued to the voter becomes a suspended ballot

WHEN the county receives the suspended ballot

AND the county has not yet accepted the current ballot

THEN the county holds the suspended ballot for 7 days after the election

WHEN the county has not received the current ballot within 7 days after the election

THEN the suspended ballot is restored, becomes the current ballot, and moves on to signature verification

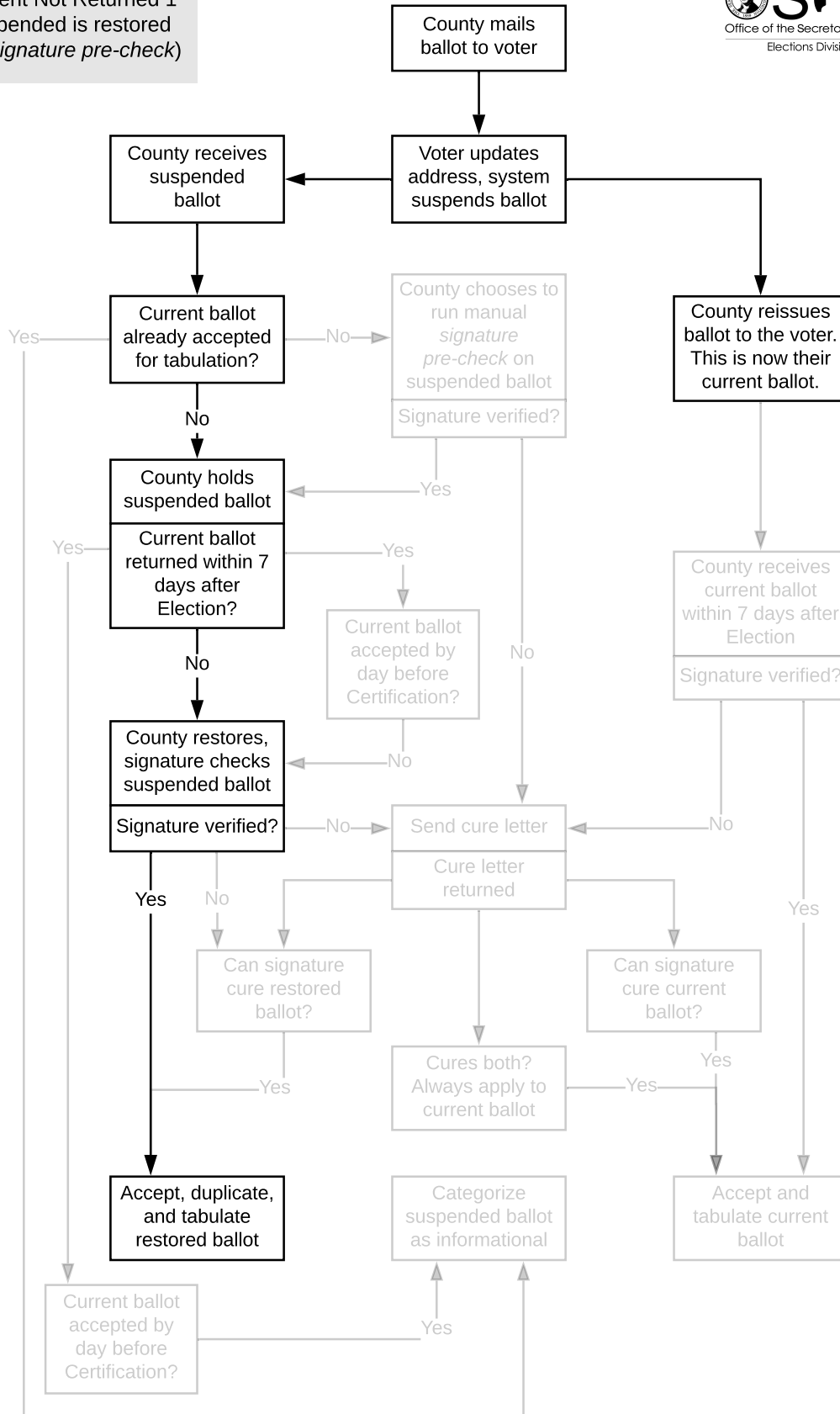
WHEN the restored ballot is signature verified

THEN the county accepts, duplicates onto current precinct, and tabulates the restored ballot

WHEN the county later receives a current ballot after the 7 day period

THEN the county categorizes the current ballot as an informational ballot (it does not reject the ballot)

Current Not Returned 1
suspended is restored
(no signature pre-check)



Current Not Returned 2
suspended is restored
(with signature pre-check)



GIVEN the voter has initiated a transfer during the voting period

AND the voter has already been issued a ballot

THEN the county reissues a ballot to the voter for their new precinct (this is the current ballot)

AND the original ballot issued to the voter becomes a suspended ballot

WHEN the county receives the suspended ballot

AND the county has not yet accepted the current ballot

THEN the county may implement a manual signature pre-check on the suspended ballot

WHEN the suspended ballot is shown to have a valid signature through the signature pre-check

THEN the county holds the suspended ballot for 7 days after the election

WHEN the county has not received the current ballot within 7 days of the election

THEN the suspended ballot is restored and moves on to signature verification

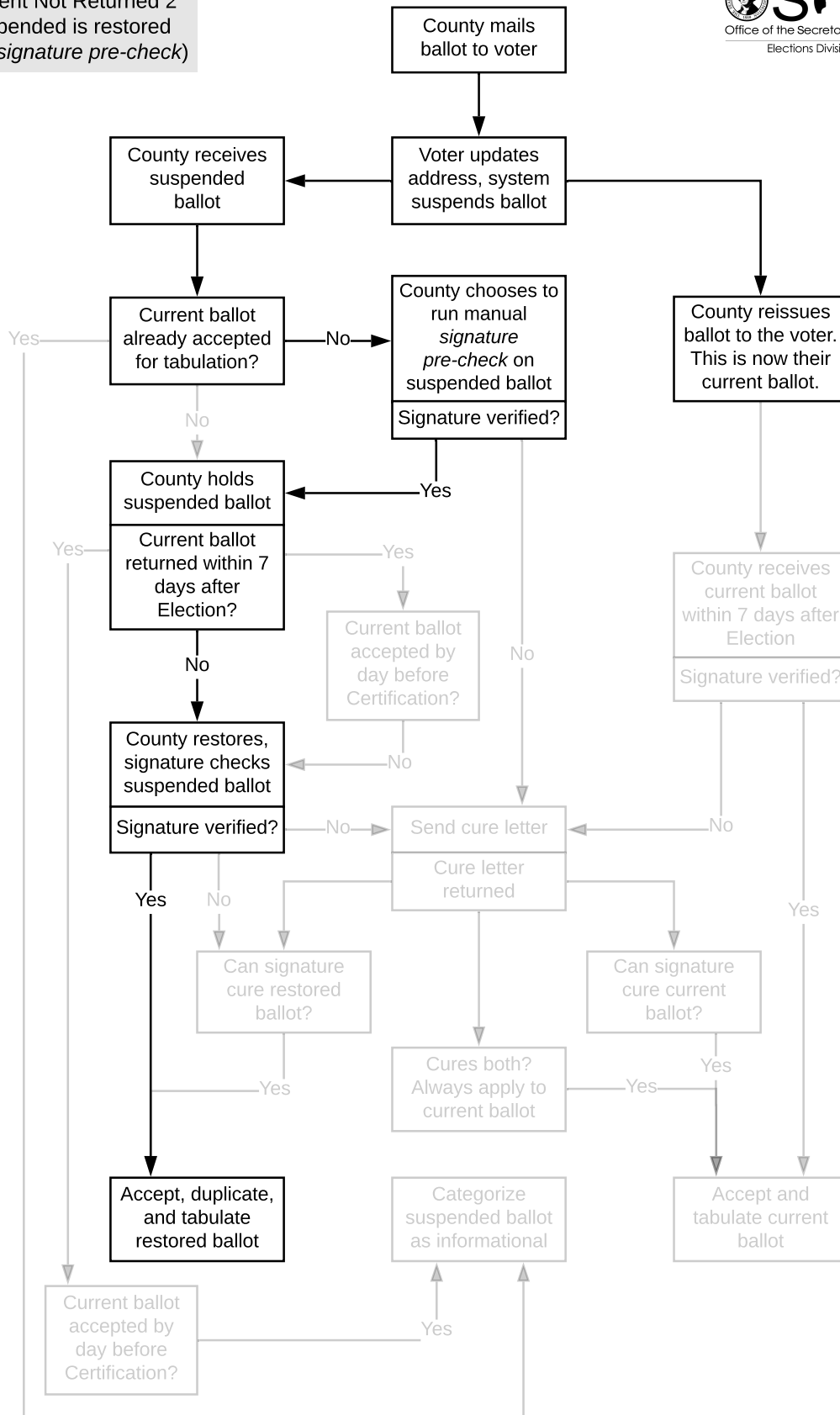
WHEN the restored ballot's valid signature is confirmed

THEN the county accepts, duplicates onto current precinct, and tabulates the restored ballot

WHEN the county receives a current ballot after the 7 day period

THEN the county categorizes the current ballot as an informational ballot (it does not reject the ballot)

Current Not Returned 2
suspended is restored
(with *signature pre-check*)



Current Not Returned 3

suspended is restored
(no signature pre-check)



GIVEN the voter has initiated a transfer during the voting period

AND the voter has already been issued a ballot

THEN the county reissues a ballot to the voter for their new precinct (this is the current ballot)

AND the original ballot issued to the voter becomes a suspended ballot

WHEN the county receives the suspended ballot

AND the county has not yet accepted the current ballot

THEN the county holds the suspended ballot for 7 days after the election

WHEN the county has not received the current ballot within 7 days of the election

THEN the suspended ballot is restored and moves on to signature verification

WHEN the restored ballot is signature challenged

THEN the county issues a cure notice to the voter

WHEN the cure notice is returned

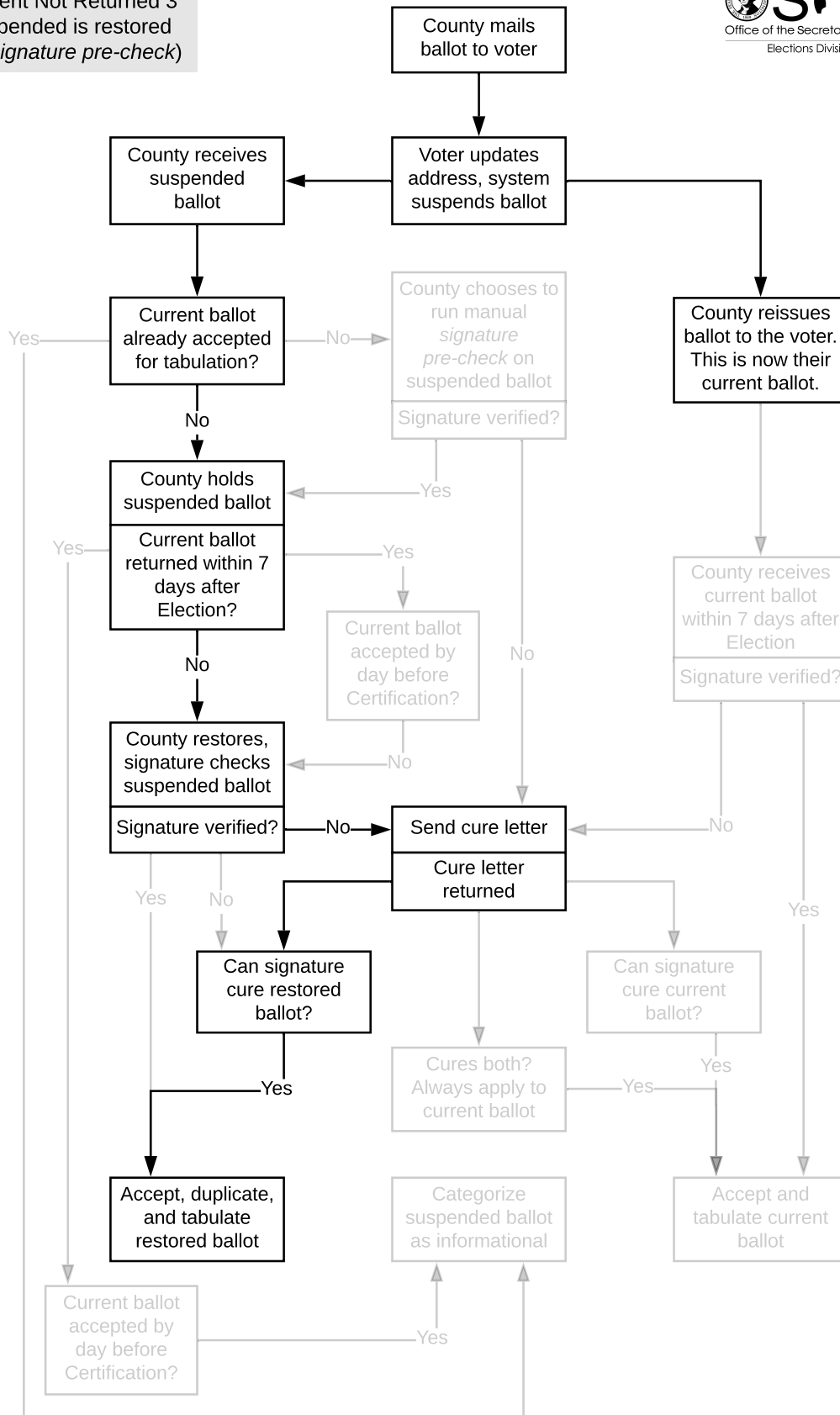
AND the signature can cure the restored ballot

THEN the county accepts, duplicates onto current precinct, and tabulates the restored ballot

WHEN the county receives a current ballot after the 7 day period

THEN the county categorizes the current ballot as an informational ballot (it does not reject the ballot)

Current Not Returned 3
suspended is restored
(no signature pre-check)



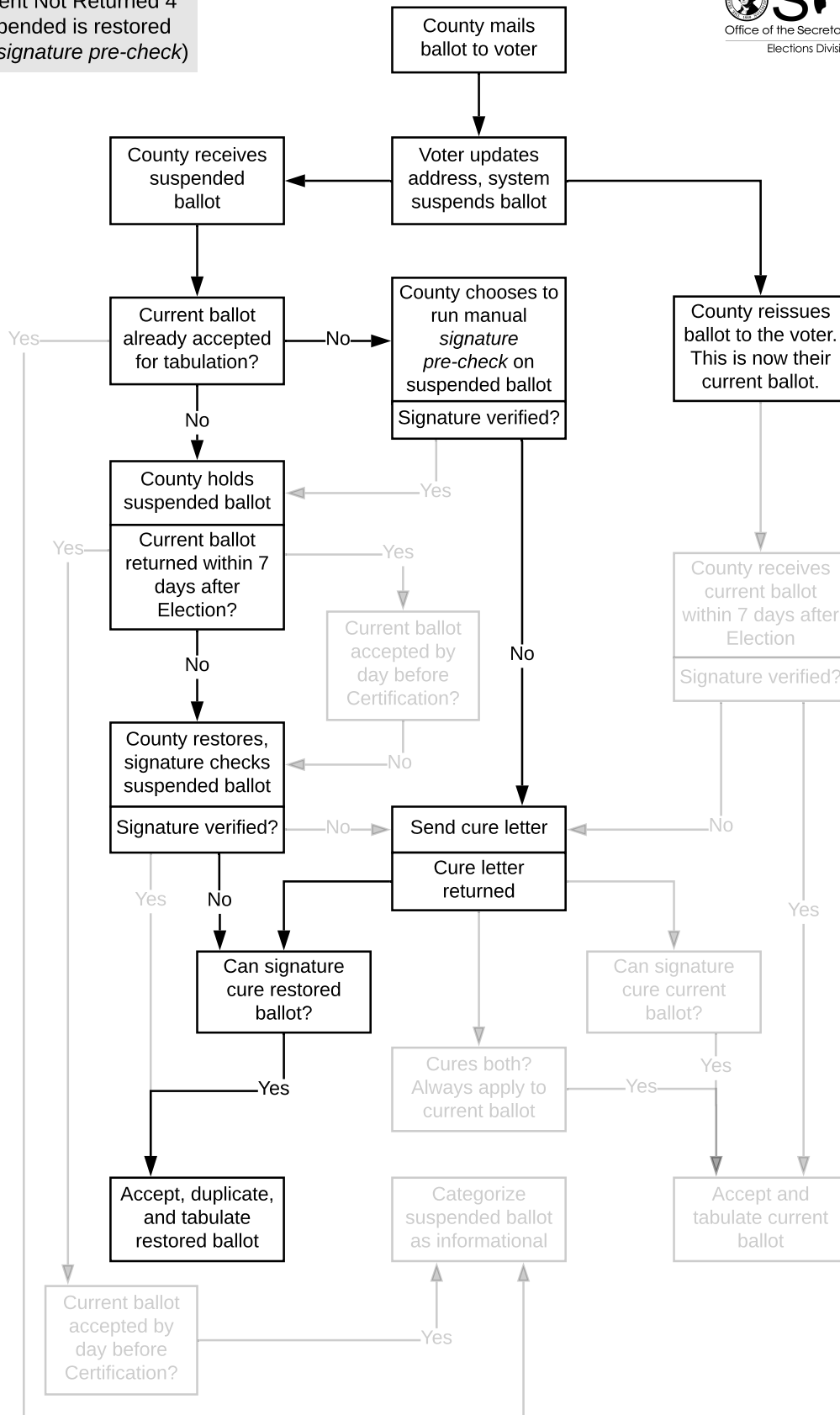
Current Not Returned 4
suspended is restored
(with signature pre-check)



GIVEN the voter has initiated a transfer during the voting period
AND the voter has already been issued a ballot
THEN the county reissues a ballot to the voter for their new precinct (this is the current ballot)
AND the original ballot issued to the voter becomes a suspended ballot
WHEN the county receives the suspended ballot
AND the county has not yet accepted the current ballot
THEN the county may implement a manual signature pre-check on the suspended ballot
WHEN the suspended ballot is signature challenged through the signature pre-check
THEN the county issues a cure notice to the voter
WHEN the cure notice is returned
AND the county has not received the current ballot within 7 days after the election
AND the signature can cure the suspended ballot
THEN the suspended ballot is restored and moves on to signature verification
WHEN that ballot's valid signature is confirmed
THEN the county accepts, duplicates onto current precinct, and tabulates the restored ballot

WHEN the county receives a current ballot after the 7 day period
THEN the county categorizes the current ballot as an informational ballot (it does not reject the ballot)

Current Not Returned 4
suspended is restored
(with *signature pre-check*)



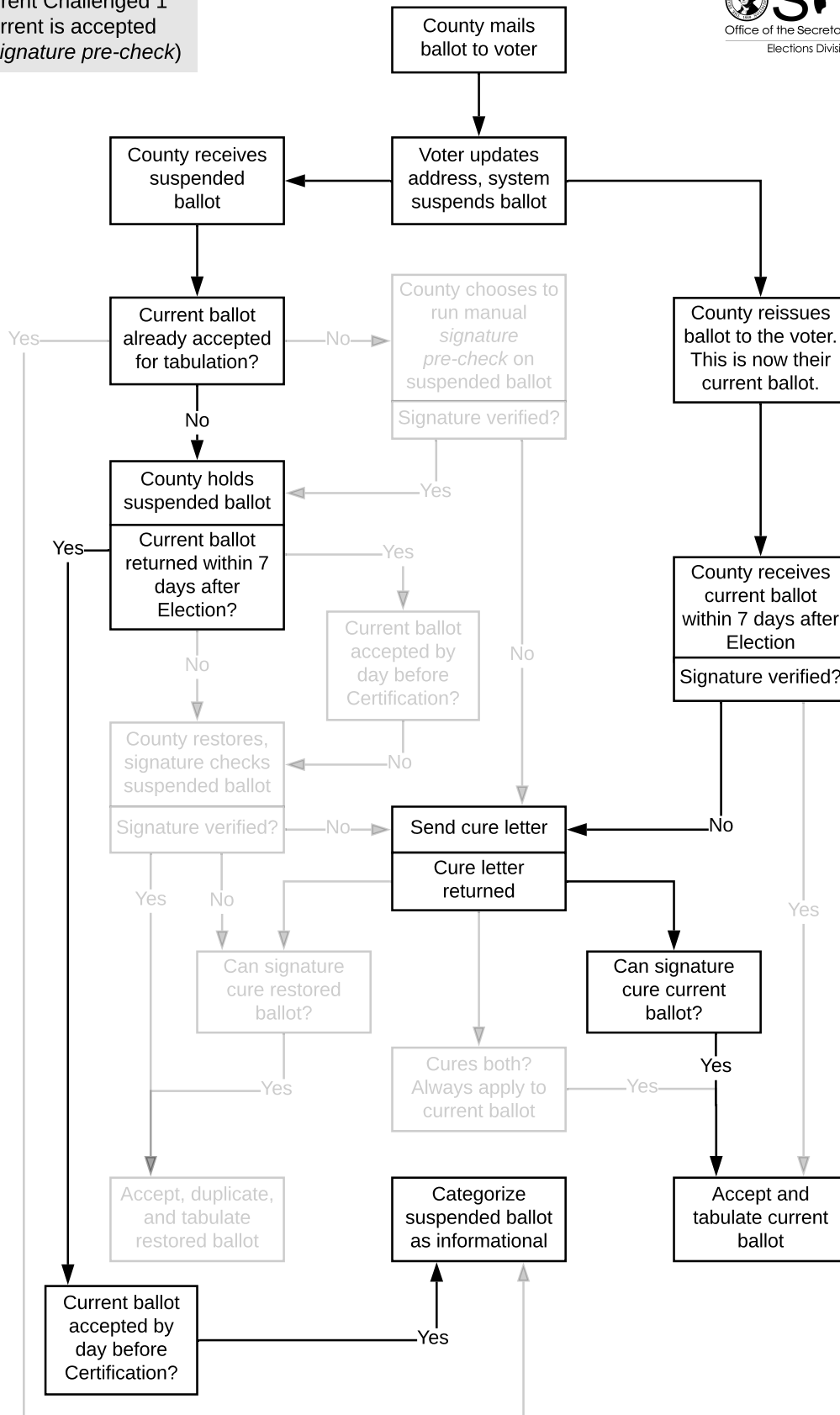
Current Challenged 1
current is accepted
(no signature pre-check)



GIVEN the voter has initiated a transfer during the voting period
AND the voter has already been issued a ballot
THEN the county reissues a ballot to the voter for their new precinct (this is the current ballot)
AND the original ballot issued to the voter becomes a suspended ballot
WHEN the county receives the suspended ballot
AND the county has not yet accepted the current ballot
THEN the county holds the suspended ballot for 7 days after the election
WHEN the county receives the current ballot within 7 days of the election
AND the current ballot is signature challenged
THEN the county issues a cure notice to the voter
WHEN the cure notice is returned
AND the signature can cure the current ballot
AND the current ballot is signature verified within 3 days of Certification
THEN the county accepts and tabulates the current ballot
AND the county categorizes the suspended ballot as an informational ballot (it does not reject the ballot)¹

¹ When neither ballot can be cured prior to certification, only reject the current ballot

Current Challenged 1
current is accepted
(no signature pre-check)



Current Challenged 2

current is accepted
(with signature pre-check)



GIVEN the voter has initiated a transfer during the voting period

AND the voter has already been issued a ballot

THEN the county reissues a ballot to the voter for their new precinct (this is the current ballot)

AND the original ballot issued to the voter becomes a suspended ballot

WHEN the county receives the suspended ballot

AND the county has not yet accepted the current ballot

THEN the county may implement a manual signature pre-check on the suspended ballot

WHEN the suspended ballot is shown to have a valid signature through the signature pre-check

THEN the county holds the suspended ballot for 7 days after the election

WHEN the county receives the current ballot within 7 days of the election

AND the current ballot is signature challenged

THEN the county issues a cure notice to the voter

WHEN the cure notice is returned

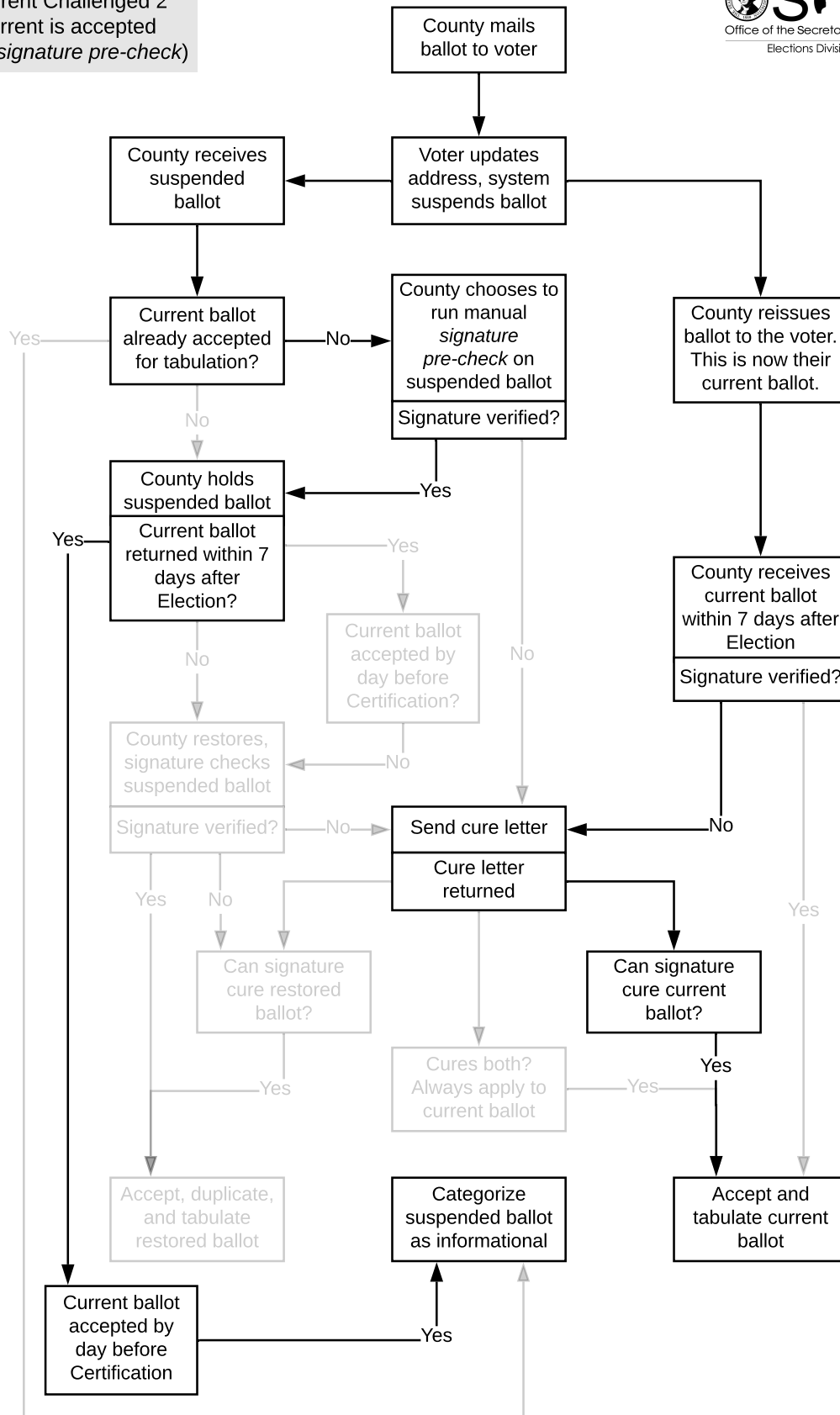
AND the signature can cure the current ballot within 3 days of certification

THEN the county accepts and tabulates the current ballot

AND the county categorizes the suspended ballot as an informational ballot (it does not reject the ballot)¹

¹ When neither ballot can be cured prior to certification, only reject the current ballot

Current Challenged 2
current is accepted
(with *signature pre-check*)



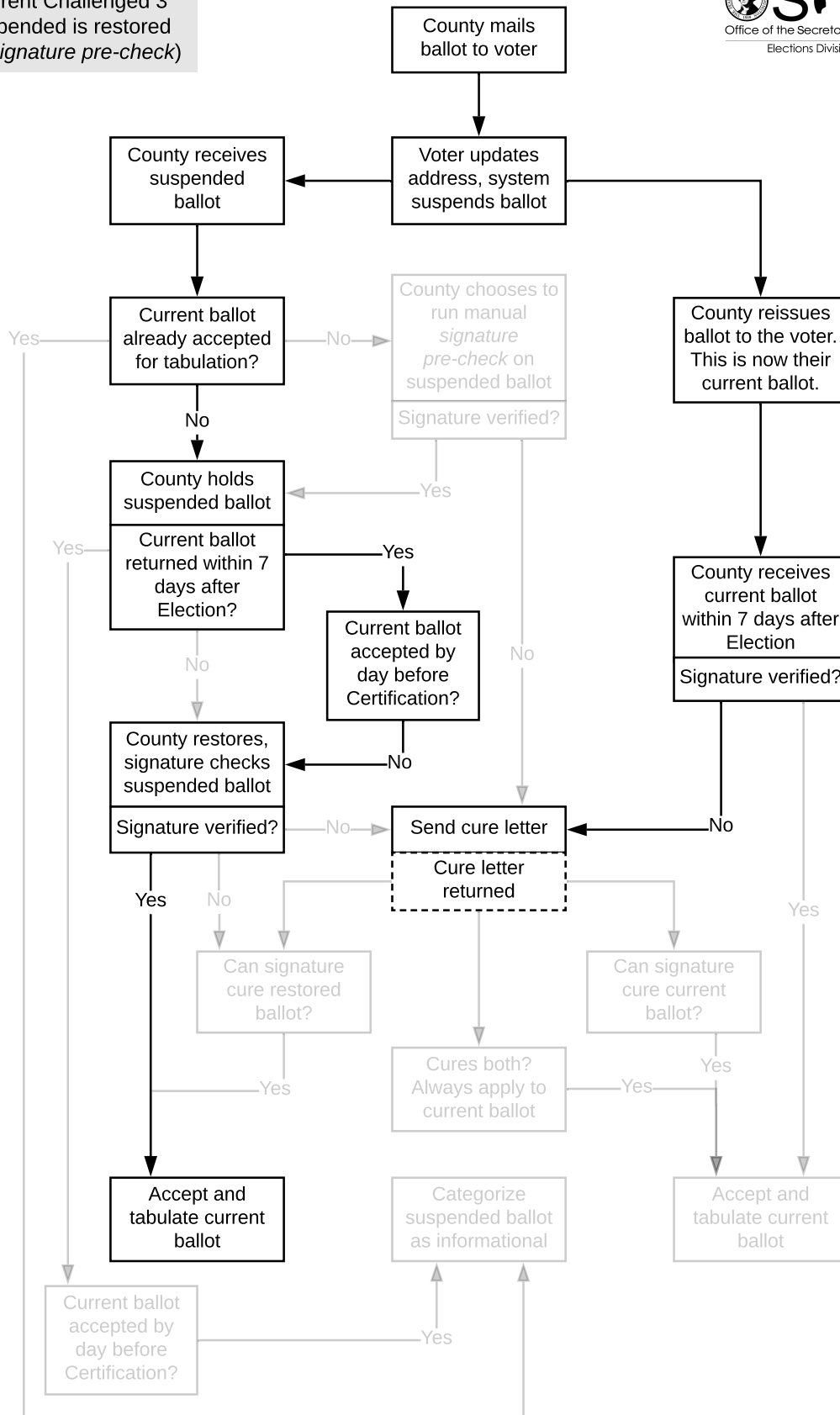
Current Challenged 3
suspended is restored
(no signature pre-check)



GIVEN the voter has initiated a transfer during the voting period
AND the voter has already been issued a ballot
THEN the county reissues a ballot to the voter for their new precinct (this is the current ballot)
AND the original ballot issued to the voter becomes a suspended ballot
WHEN the county receives the suspended ballot
AND the county has not yet accepted the current ballot
THEN the county holds the suspended ballot for 7 days after the election
WHEN the county receives the current ballot within 7 days of the election
AND the current ballot is signature challenged
THEN the county issues a cure notice to the voter
WHEN the cure notice is returned
AND the signature on the letter cannot cure the current ballot by the day before Certification
THEN the county restores and signature checks the suspended ballot
WHEN the restored ballot is signature verified
THEN the county accepts, duplicates onto current precinct, and tabulates the restored ballot
AND the county categorizes the current ballot as an informational ballot (it does not reject the ballot)¹

¹ When neither ballot can be cured prior to certification, only reject the current ballot

Current Challenged 3
suspended is restored
(no signature pre-check)



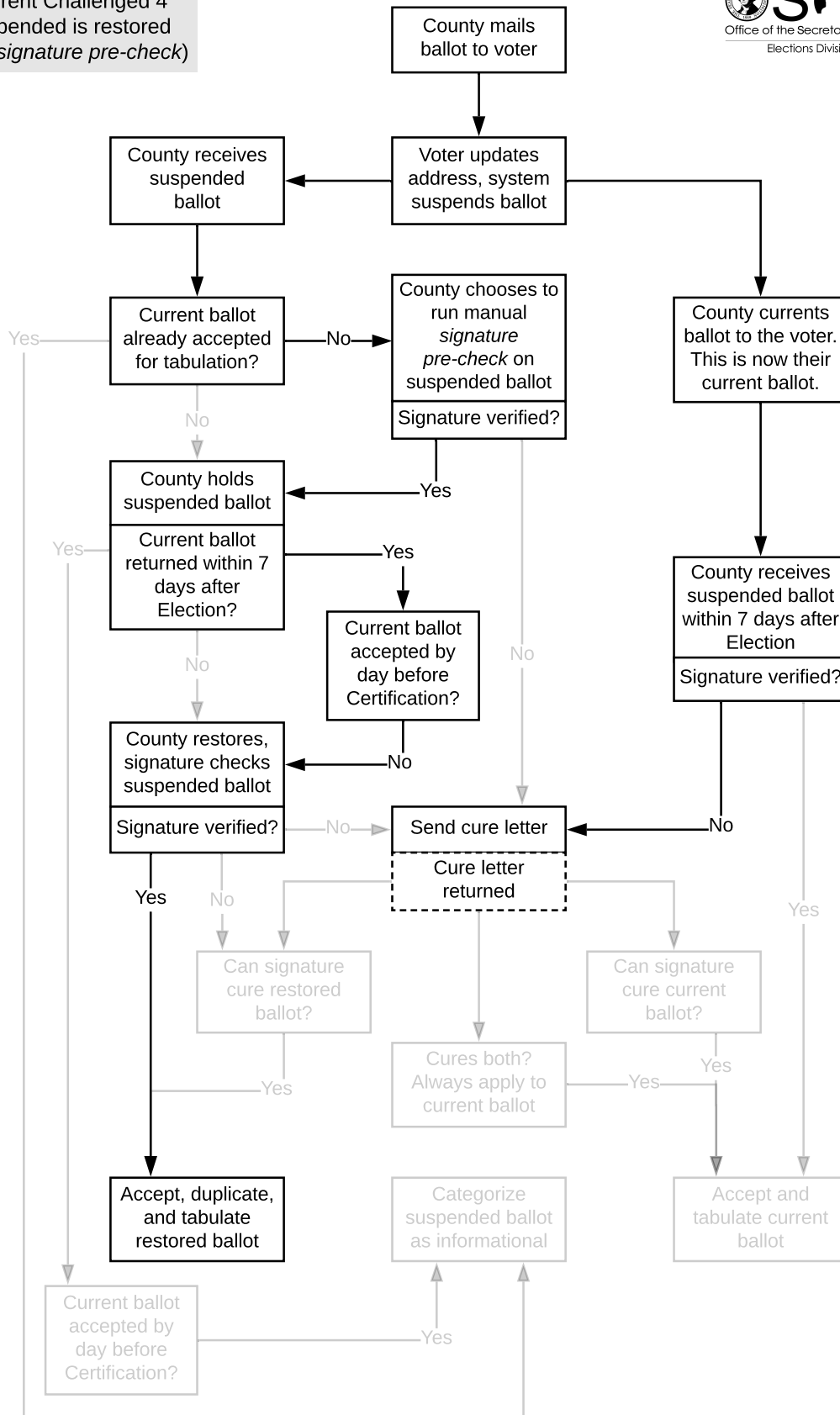
Current Challenged 4
suspended is restored
(with signature pre-check)



GIVEN the voter has initiated a transfer during the voting period
AND the voter has already been issued a ballot
THEN the county reissues a ballot to the voter for their new precinct (this is the current ballot)
AND the original ballot issued to the voter becomes a suspended ballot
WHEN the county receives the suspended ballot
AND the county has not yet accepted the current ballot
THEN the county may implement a manual signature pre-check on the suspended ballot
WHEN the suspended ballot is shown to have a valid signature through the signature pre-check
THEN the county holds the suspended ballot for 7 days after the election
WHEN the county receives the current ballot within 7 days of the election
AND the current ballot is signature challenged
THEN the county issues a cure notice to the voter
WHEN the cure notice is returned
AND the signature on the letter cannot cure the current ballot by the day before Certification
THEN the county restores and signature checks the suspended ballot
WHEN the restored ballot's valid signature has been confirmed
THEN the county accepts, duplicates onto current precinct, and tabulates the restored ballot
AND the county categorizes the current ballot as an informational ballot (it does not reject the ballot)¹

¹ When neither ballot can be cured prior to certification, only reject the current ballot

Current Challenged 4
suspended is restored
(with *signature pre-check*)



Both Ballots Challenged 1

current is accepted
(with signature pre-check)



GIVEN the voter has initiated a transfer during the voting period

AND the voter has already been issued a ballot

THEN the county reissues a ballot to the voter for their new precinct (this is the current ballot)

AND the original ballot issued to the voter becomes a suspended ballot

WHEN the county receives the suspended ballot

AND the county has not yet accepted the current ballot

THEN the county may implement a manual signature pre-check on the suspended ballot

WHEN the suspended ballot is signature challenged through the signature pre-check

THEN the county issues a cure notice to the voter

WHEN the county receives the current ballot within 7 days of the election

THEN the current ballot moves on to signature verification

WHEN the current ballot is signature challenged

THEN the cure notice initiated by the signature pre-check for the suspended ballot may be applied to the current ballot

WHEN the cure notice is returned

AND the signature can cure the current ballot

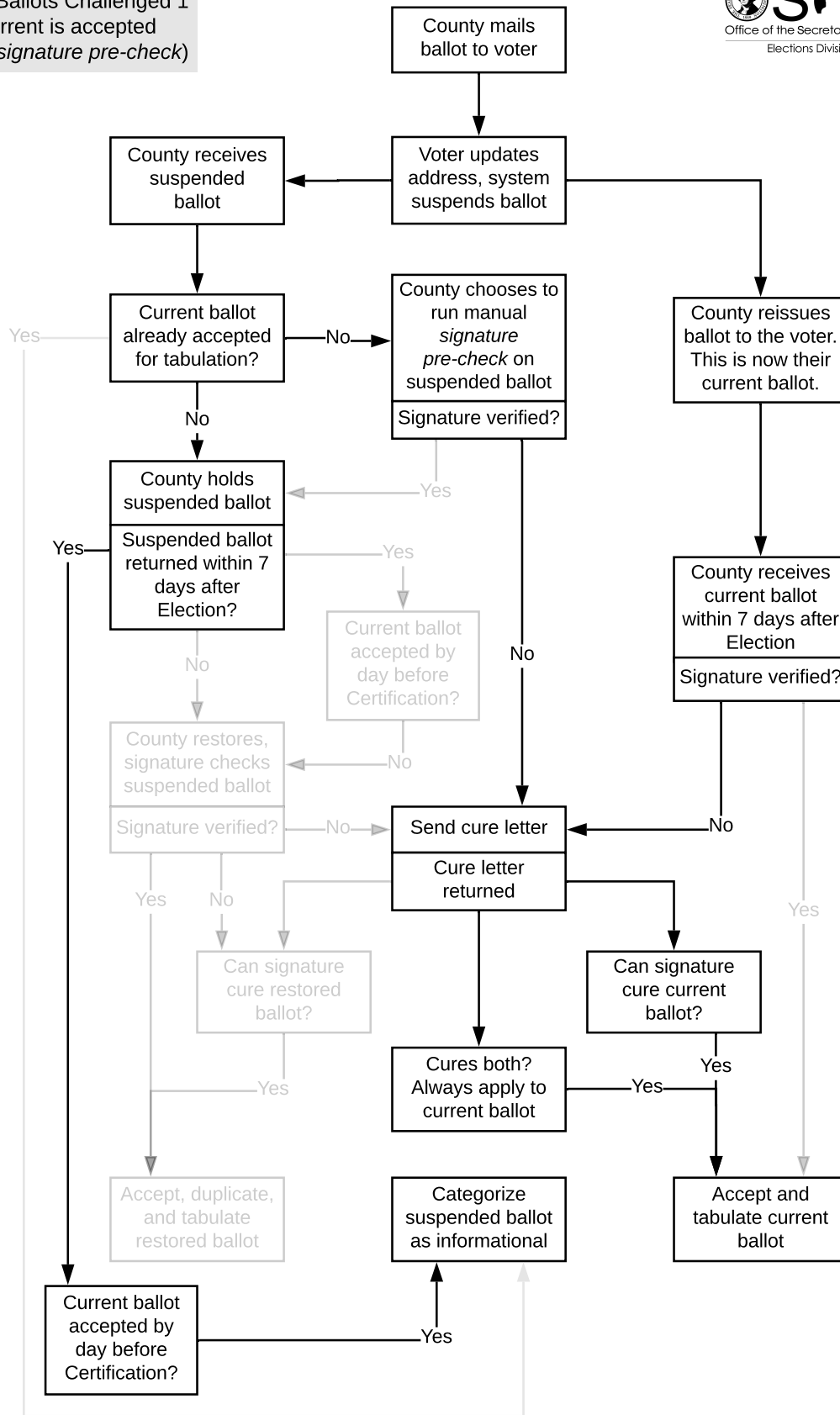
AND the current ballot is signature verified by the day before Certification

THEN the county accepts and tabulates the current ballot

AND the county categorizes the suspended ballot as an informational ballot (it does not reject the ballot)¹

¹ When neither ballot can be cured prior to certification, only reject the current ballot

Both Ballots Challenged 1
current is accepted
(with *signature pre-check*)



Both Ballots Challenged 2

suspended is restored
(with signature pre-check)



GIVEN the voter has initiated a transfer during the voting period

AND the voter has already been issued a ballot

THEN the county reissues a ballot to the voter for their new precinct (this is the current ballot)

AND the original ballot issued to the voter becomes a suspended ballot

WHEN the county receives the suspended ballot

AND the county has not yet accepted the current ballot

THEN the county may implement a manual signature pre-check on the suspended ballot

WHEN the suspended ballot is signature challenged through the signature pre-check

THEN the county issues a cure notice to the voter

WHEN the county receives the current ballot within 7 days of the election

AND the current ballot is signature challenged

THEN the cure notice initiated by the signature pre-check for the suspended ballot may be applied to the current ballot if it is returned

WHEN the cure notice is returned

AND the signature cannot cure the current ballot

AND additional correspondence cannot cure the current ballot by the day before Certification

THEN the county restores and signature checks the suspended ballot

AND the cure letter can be applied to the restored ballot

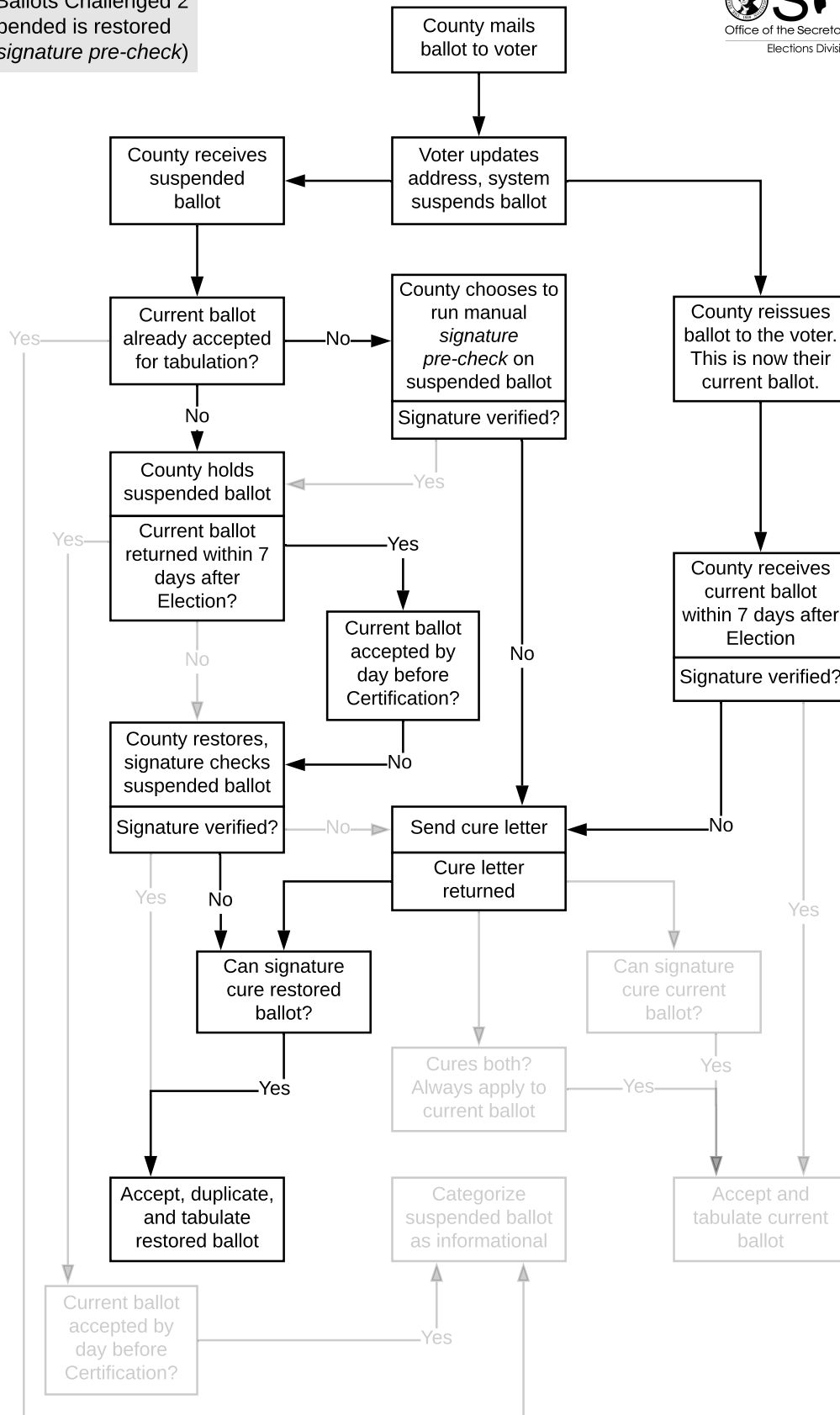
WHEN the restored ballot is signature verified using the signature on the cure letter

THEN the restored ballot is accepted, duplicated onto the voter's current precinct, and tabulated

AND the county categorizes the current ballot as an informational ballot (it does not reject the ballot)¹

¹ When neither ballot can be cured prior to certification, only reject the current ballot

Both Ballots Challenged 2
suspended is restored
(with *signature pre-check*)



Both Ballots Challenged 3

suspended is restored
(no signature pre-check)



GIVEN the voter has initiated a transfer during the voting period

AND the voter has already been issued a ballot

THEN the county reissues a ballot to the voter for their new precinct (this is the current ballot)

AND the original ballot issued to the voter becomes a suspended ballot

WHEN the county receives the suspended ballot

AND the county has not yet accepted the current ballot

THEN the county holds the suspended ballot for 7 days after the election

WHEN the county receives the current ballot within 7 days of the election

AND the current ballot is signature challenged

THEN the county issues a cure notice to the voter

WHEN the cure notice is returned

AND the signature on the letter cannot cure the current ballot by the day before Certification

THEN the county restores and signature checks the suspended ballot

WHEN that ballot is also signature challenged

THEN the cure notice initiated by the signature challenge on the current ballot may be applied to it

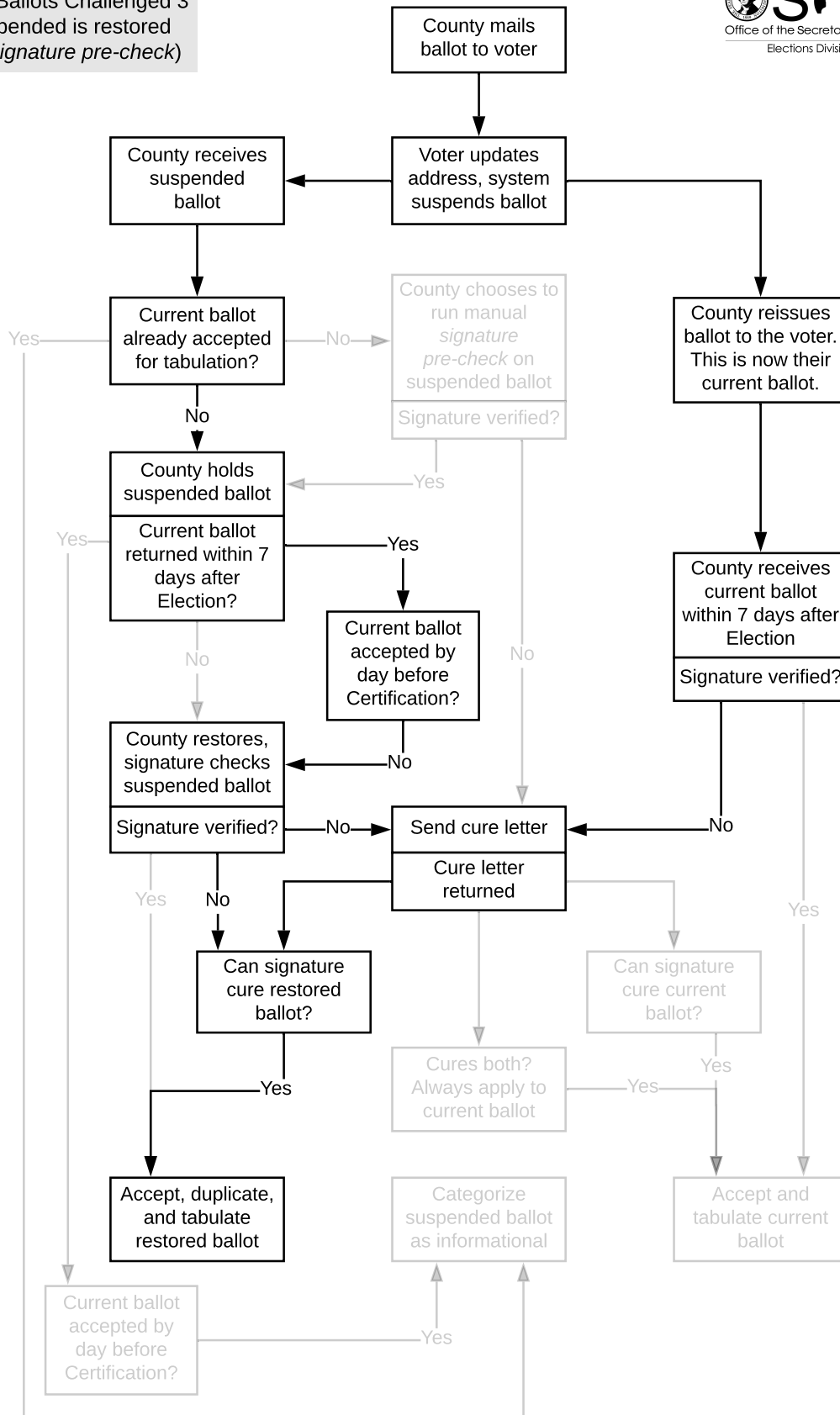
WHEN the restored ballot is signature verified using the signature on the cure letter

THEN the restored ballot is accepted, duplicated onto the voter's current precinct, and tabulated

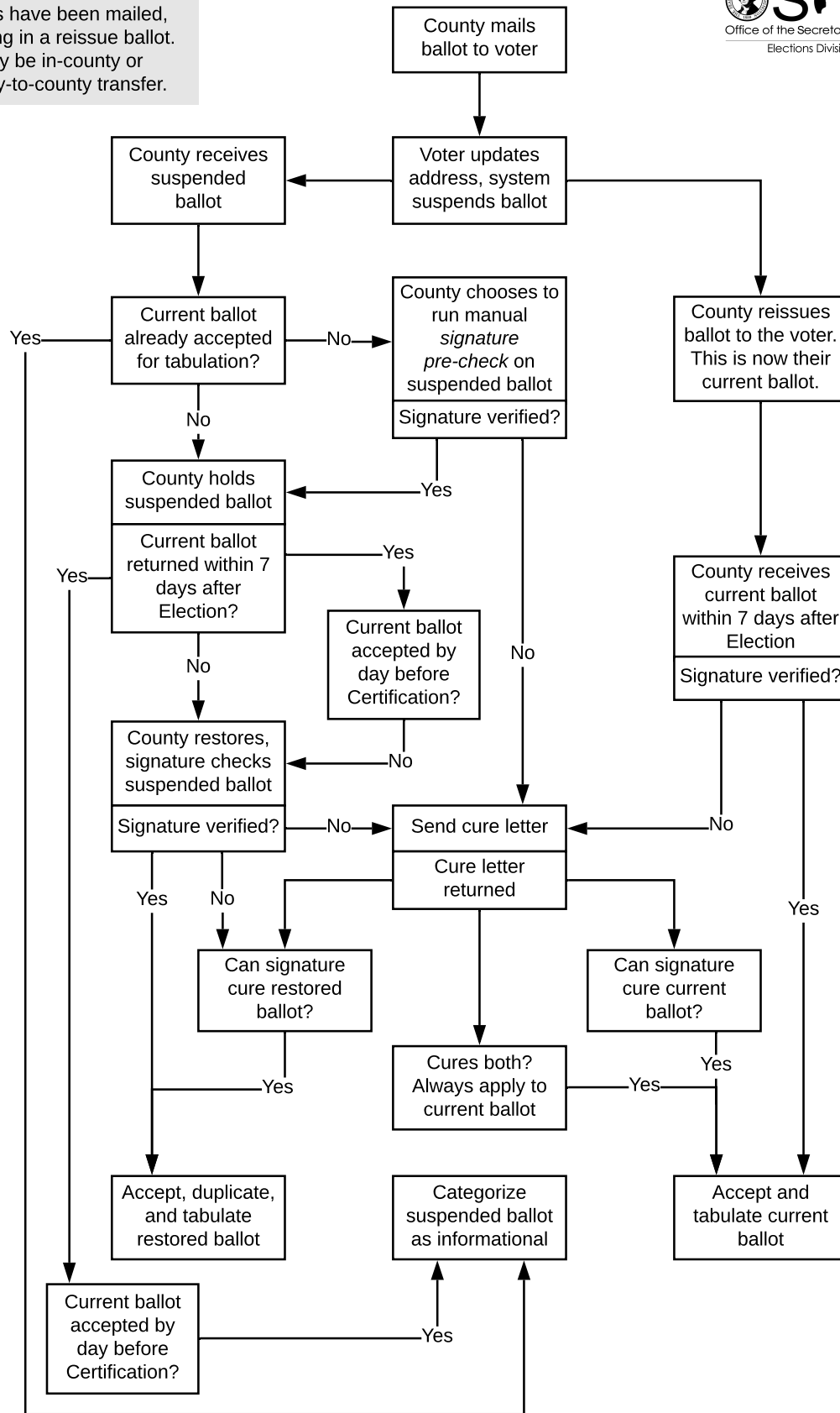
AND the county categorizes the current ballot as an informational ballot (it does not reject the ballot)¹

¹When neither ballot can be cured prior to certification, only reject the current ballot

Both Ballots Challenged 3
suspended is restored
(no signature pre-check)



Overview: voter transfers after ballots have been mailed, resulting in a reissue ballot. May be in-county or county-to-county transfer.



Same Day Registration | Terms

Updated—June 7, 2019

Term	Description
Accepted Only one ballot may be accepted per voter each election.	<p>An “accepted ballot” has been entered into the system <i>and</i> signature verified. It’s ready for opening and manual inspection.</p> <p>For example, in some counties with sorters, ballots may enter the system (received) but are not yet signature verified (accepted/challenged). In other counties, ballots are both received and accepted/challenged during signature verification.</p>
Received Many ballots may be received per voter each election.	<p>A “received ballot” has been returned to the county and enters the system, <i>but</i> has not yet been signature verified. A received ballot has not yet been accepted/challenged. It’s not ready for opening until accepted.</p> <p>For example, a ballot received by the system could be on a sorter or awaiting further research before signature verification.</p>
Current The most recently issued ballot is the voter’s current ballot.	<p>A “current ballot” matches the precinct in which the voter is registered to vote.</p> <p>The current ballot may be either a replacement or reissued ballot. The current ballot may not necessarily be the first ballot in/received. It’s not a suspended ballot.</p>
Suspended All ballots previously issued to the voter within an election are suspended ballots. <i>VoteWA: suspended = cancelled</i>	<p>A “suspended ballot” is a previously issued ballot that is not the voter’s current ballot. In some cases, the suspended ballot may be accepted and duplicated to the current precinct ballot.</p> <p>The system suspends a ballot because the voter either updated their VR record or requested a replacement. If received by the county, the suspended ballot is either held (in county) or immediately forwarded and held (new county) to allow time for the current ballot to be received.</p>
Reissued A reissued ballot becomes the current ballot and all others are suspended. <i>VoteWA: reissued = current</i>	<p>A “reissued ballot” becomes the current ballot issued to a voter due to an address update within the state that changes the voter’s ballot type or style. The voter registration record has been updated or changed prior to 8 p.m. on Election Day and the ballot packet is impacted. Messaging is required with the reissued ballot packet (i.e. an insert).</p>
Replacement Typically requested by the voter, a replacement ballot becomes the current ballot.	<p>A “replacement ballot” is the same type or style as the most recently issued (now suspended) ballot. The voter registration record is not updated or changed in a way that impacts the ballot packet. If the voter</p>

	returns a suspended ballot that matches the current voter registration record, we can restore, receive, and accept the suspended ballot without having to hold or duplicate because it already matches the current ballot.
Hold/Held Holding pattern.	<p>A ballot is received and “held” when time is needed to allow the voter time to return their current ballot, or further research is needed.</p> <p>FWABs and suspended ballots are examples of held ballots that may eventually be accepted. A suspended ballot belonging to another county must be forwarded within 2 business days and cannot be held in your county.</p>
Restored Suspended ballots may be restored and accepted. Two-step process in VoteWA, always handle current ballot first if available	<p>When the current ballot is either not received or remains challenged during the certification period, the voter’s suspended (and held) ballot may be restored at the appropriate time. If the signature on the restored ballot validates, the ballot is accepted and duplicated to the current ballot.</p>
Challenged Research needed. VoteWA: these appear as <i>rejected</i> ballots with a reason for the rejection. The county holds until <i>current</i> ballot can be accepted for that voter	<p>A “challenged ballot” has reached signature verification but is not accepted. It often requires a notice. Challenged ballots are handled by the county where it’s been received (in county) or when a voter updates, the ballot is forwarded and held (new county). Two categories:</p> <ol style="list-style-type: none"> 1. Signature issues. Anything that can be cured by the voter such as no signature, no match, etc. 2. Administrative issues. Late ballots. May or may not be cured.
Conditional Registration COOP mode...when the system is down. These exist outside the VoteWA system	<p>A “conditional registration” is an in-person application submitted when the voter registration system is unable to process applications.</p> <p>Conditionally registered voters are issued a current ballot for their precinct whenever possible; they are not issued a provisional ballot. This provides the voter an opportunity to vote in the jurisdiction in which they reside, and allows the county time for research when the system is down.</p>
Informational/Invalid When a voter has been credited, other ballots received from that voter are not rejected. Remaining cancelled ballots at Certification	<p>When a voter’s ballot has been accepted, do not categorize other ballots received from that voter (suspended, held) as rejected. These ballots are categorized as “informational” or “invalid” by the County Canvassing Board. Voted suspended ballots cannot be rejected unless another type of challenge is the reason for rejection. Also see Rejected.</p>
Rejected When a voted ballot cannot be counted. VoteWA: not all ballots with a rejected status lead to a final rejection of the ballot	<p>A voted suspended ballot is “rejected” <i>only if</i> another type of challenge is the reason for rejection and the voter has not been credited with voting another ballot (i.e. signature no match <i>and</i> current ballot not received; too late <i>and</i> current ballot not received). Also see Informational/Invalid.</p>