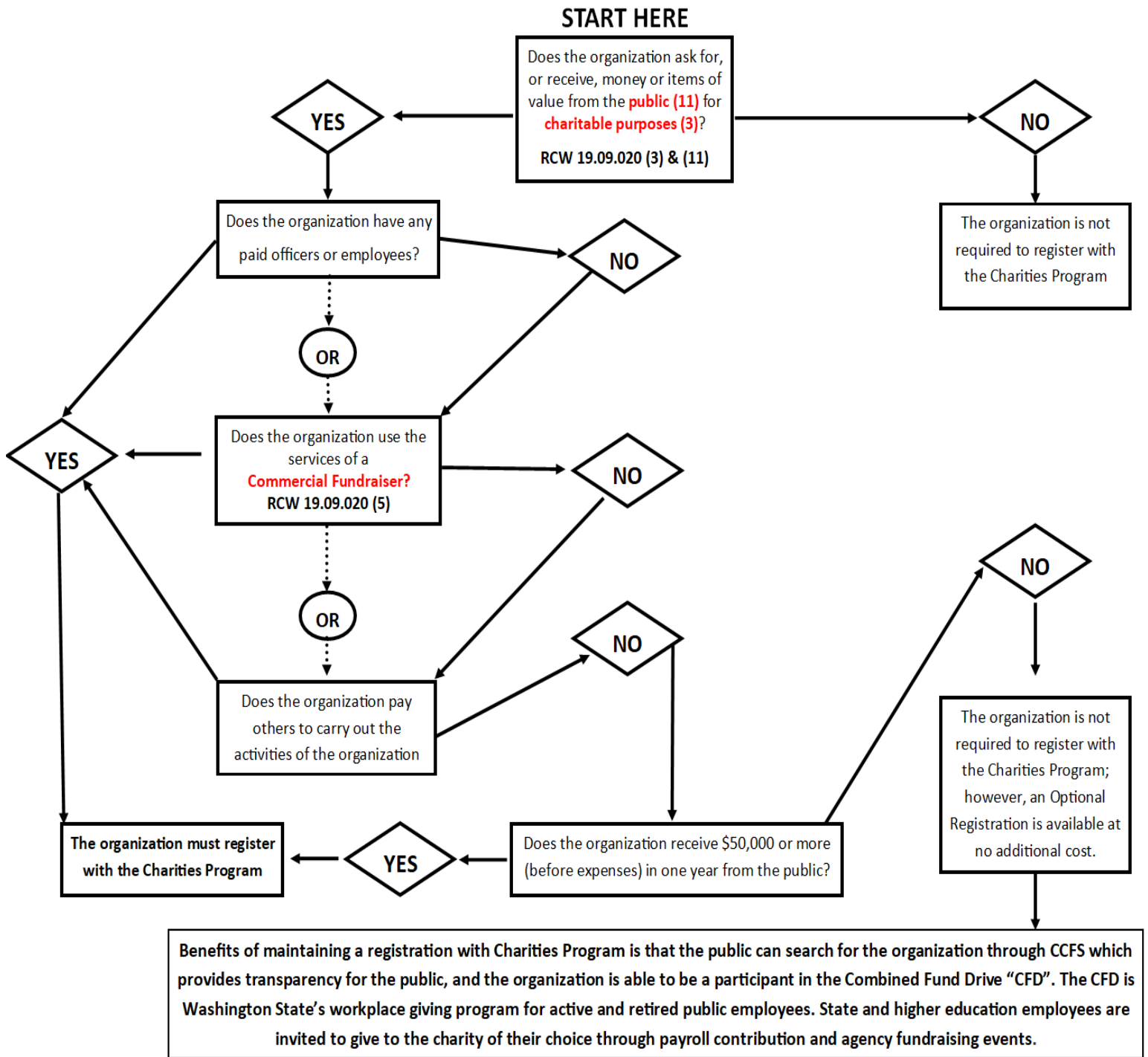


# Self-assessment Guide: Charitable Organizations



**DISCLAIMER:** This chart and any related materials are not intended to provide legal, business, or tax advice, and are furnished without representation or warranty. While this chart is believed to reflect registration requirements as of its revision date, compliance with applicable law, as the same may be amended from time to time, remains the responsibility of the user of this chart. Questions should be addressed to the user's legal, business, or tax advisors.