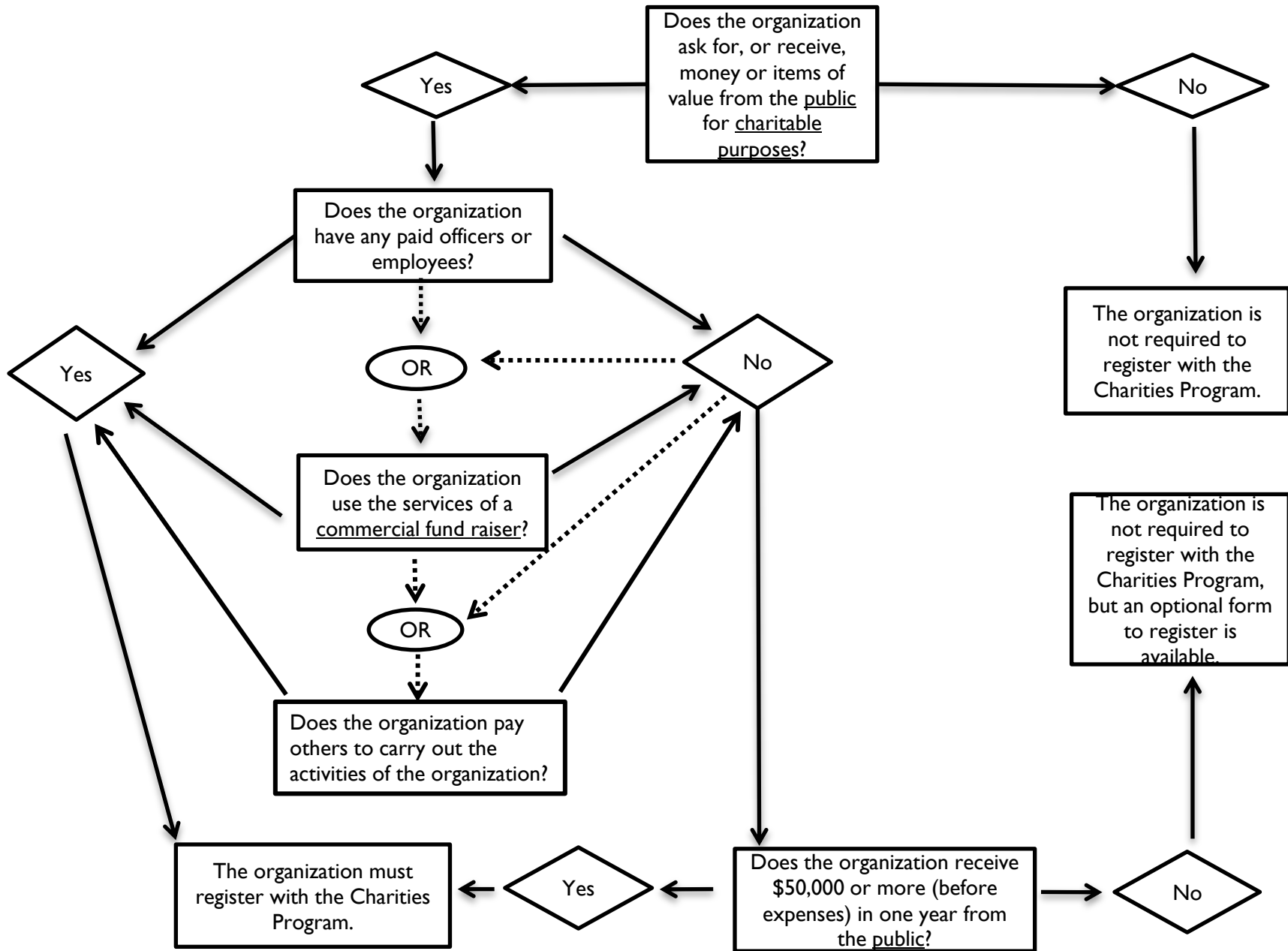


CHARITABLE ORGANIZATION FLOW CHART

START HERE



Terms as defined by the Charitable Solicitations Act, 19.09 RCW

"Charitable Organizations" is defined as any entity that solicits or collects contributions from the general public where the contribution is or is purported to be used to support a charitable purpose, but does not include any commercial fundraiser, commercial fundraising entity, commercial coventurer, or any fundraising counsel. Churches and their integrated auxiliaries and political organizations are not considered charitable organizations under the Act.

"Charitable purpose" is defined as any religious, charitable, scientific, testing for public safety, literary, or educational purpose or any other purpose that is beneficial to the community, including but not limited to recreational, environmental, humanitarian, patriotic, or civic purposes, the support of national or international amateur sports competition, the prevention of cruelty to children or animals, the advancement of social welfare, or the benefit of law enforcement personnel, fire fighters, and other persons who protect public safety. The term "charitable" is used in its generally accepted legal sense and includes relief of the poor, the distressed, or the underprivileged; advancement of religion; advancement of education or science; erecting or maintaining public buildings, monuments, or works; lessening the burdens of government; lessening neighborhood tensions; eliminating prejudice and discrimination; defending human and civil rights secured by law; and combating community deterioration and juvenile delinquency.

"Commercial fund raiser" means any entity that for compensation or other consideration within this state directly or indirectly solicits or receives contributions for or on behalf of any charitable organization or charitable purpose, or that is engaged in the business of or is held out to persons in this state as independently engaged in the business of soliciting or receiving contributions for such purposes. However, a commercial coventurer, fund-raising counsel, or consultant, as defined by this section, is not a commercial fund raiser or commercial fund-raising entity.

"Public" is defined as any individual located in Washington State without a membership or other official relationship with a charitable organization before a solicitation by the charitable organization.

5/17/2012